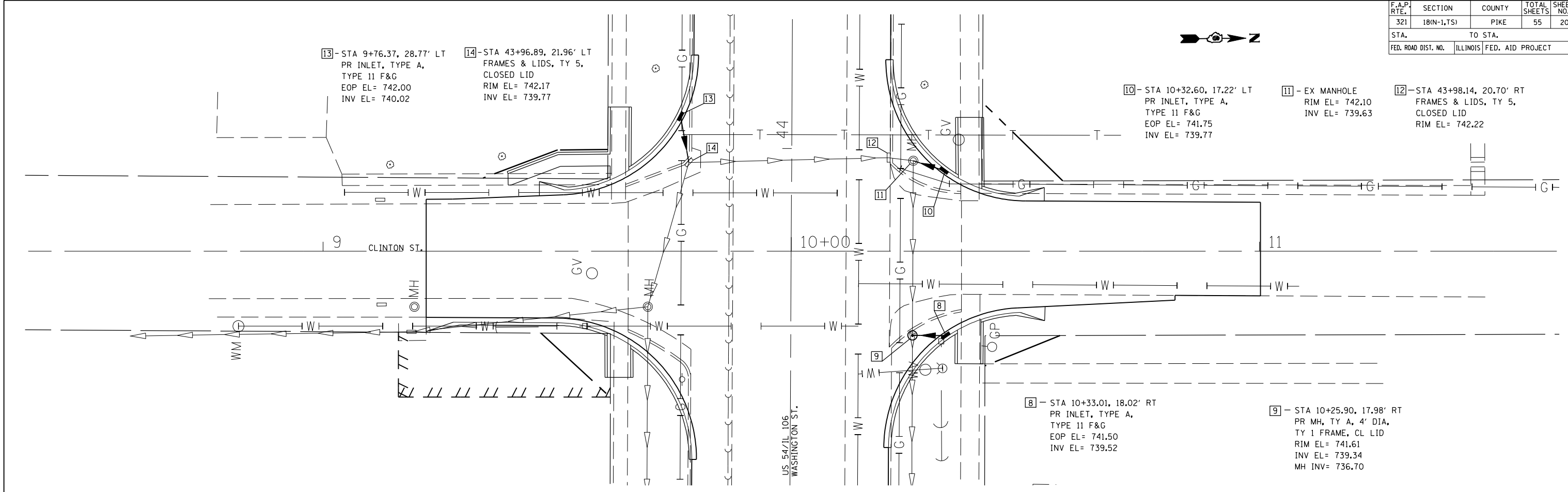


F.A.P. RTE.	SECTION	COUNTY	TOTAL SHEETS	SHEET NO.
321	18(N-1,TS)	PIKE	55	20
STA.		TO STA.		
FED. ROAD DIST. NO.		ILLINOIS	FED. AID PROJECT	



PLAN	SURVEYED	BY	DATE
NOTED	PLOTTED		
NO.	NO.		



13 - STA 9+76.37, 28.77' LT
PR INLET, TYPE A,
TYPE 11 F&G
EOP EL= 742.00
INV EL= 740.02

14 - STA 43+96.89, 21.96' LT
FRAMES & LIDS, TY 5,
CLOSED LID
RIM EL= 742.17
INV EL= 739.77

10 - STA 10+32.60, 17.22' LT
PR INLET, TYPE A,
TYPE 11 F&G
EOP EL= 741.75
INV EL= 739.77

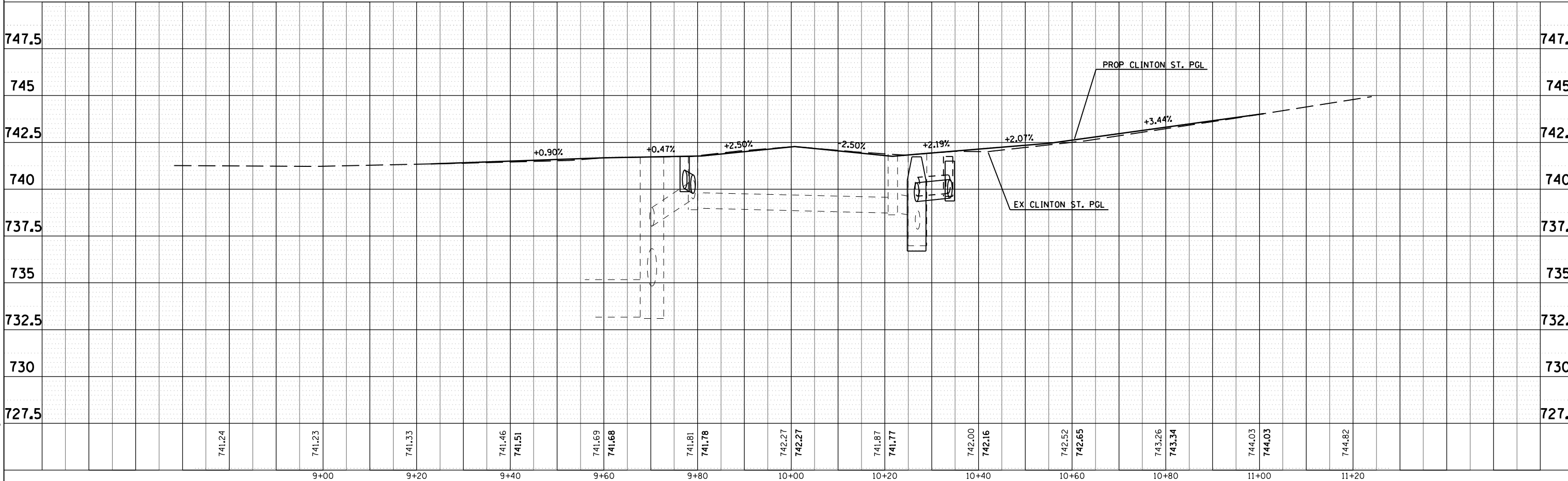
11 - EX MANHOLE
RIM EL= 742.10
INV EL= 739.63

12 - STA 43+98.14, 20.70' RT
FRAMES & LIDS, TY 5,
CLOSED LID
RIM EL= 742.22

8 - STA 10+33.01, 18.02' RT
PR INLET, TYPE A,
TYPE 11 F&G
EOP EL= 741.50
INV EL= 739.52

9 - STA 10+25.90, 17.98' RT
PR MH, TY A, 4' DIA,
TY 1 FRAME, CL LID
RIM EL= 741.61
INV EL= 739.34
MH INV= 736.70

PROFILE	SURVEYED	BY	DATE
NOTED	PLOTTED		
NO.	NO.		



PLOT DATE = Oct-04-2007 01:05:44PM
FILE NAME = c:\p\projects\655104\h\h\p\p\p.dgn
PLOT SCALE = 2:1 (7/8" = 1')