

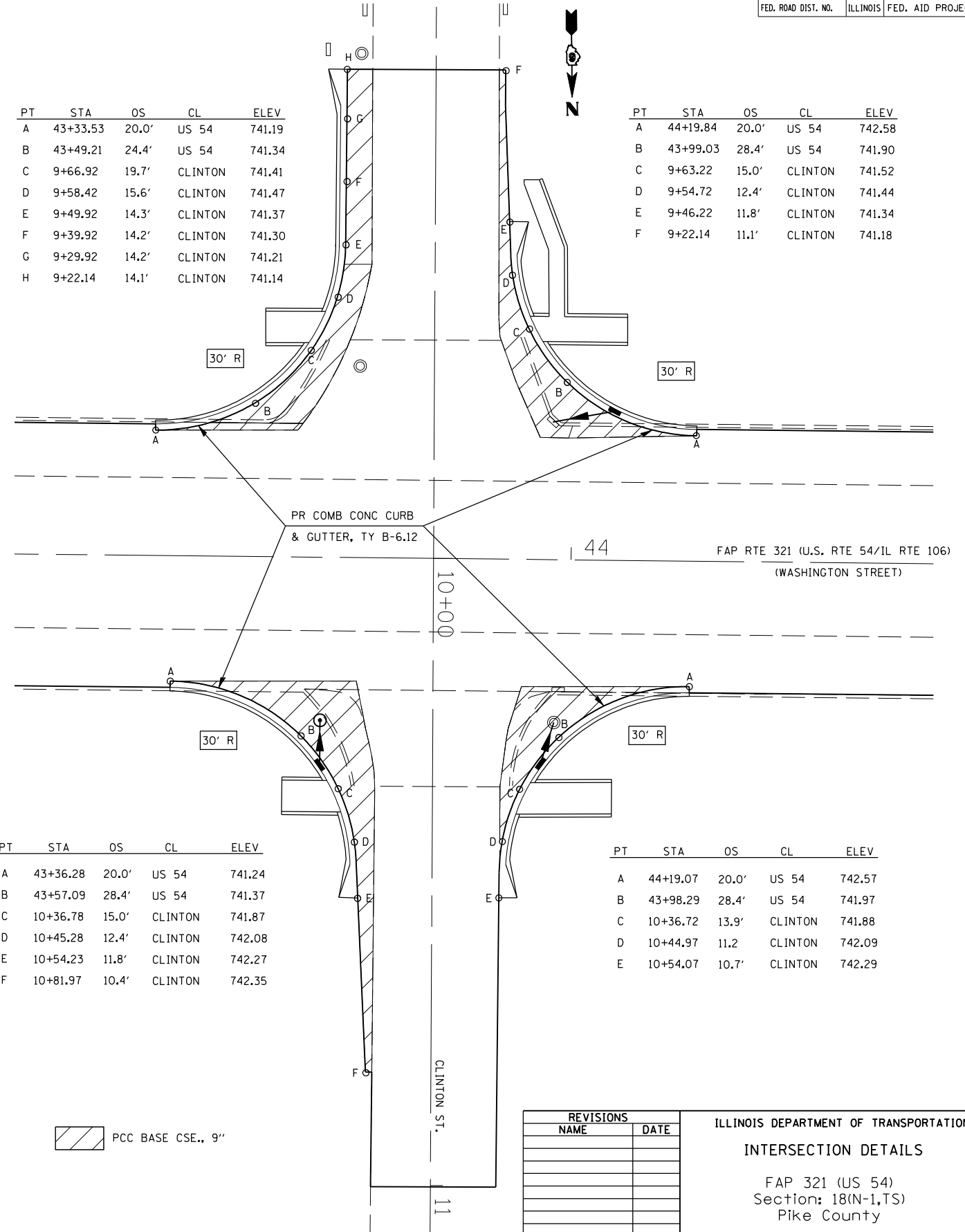
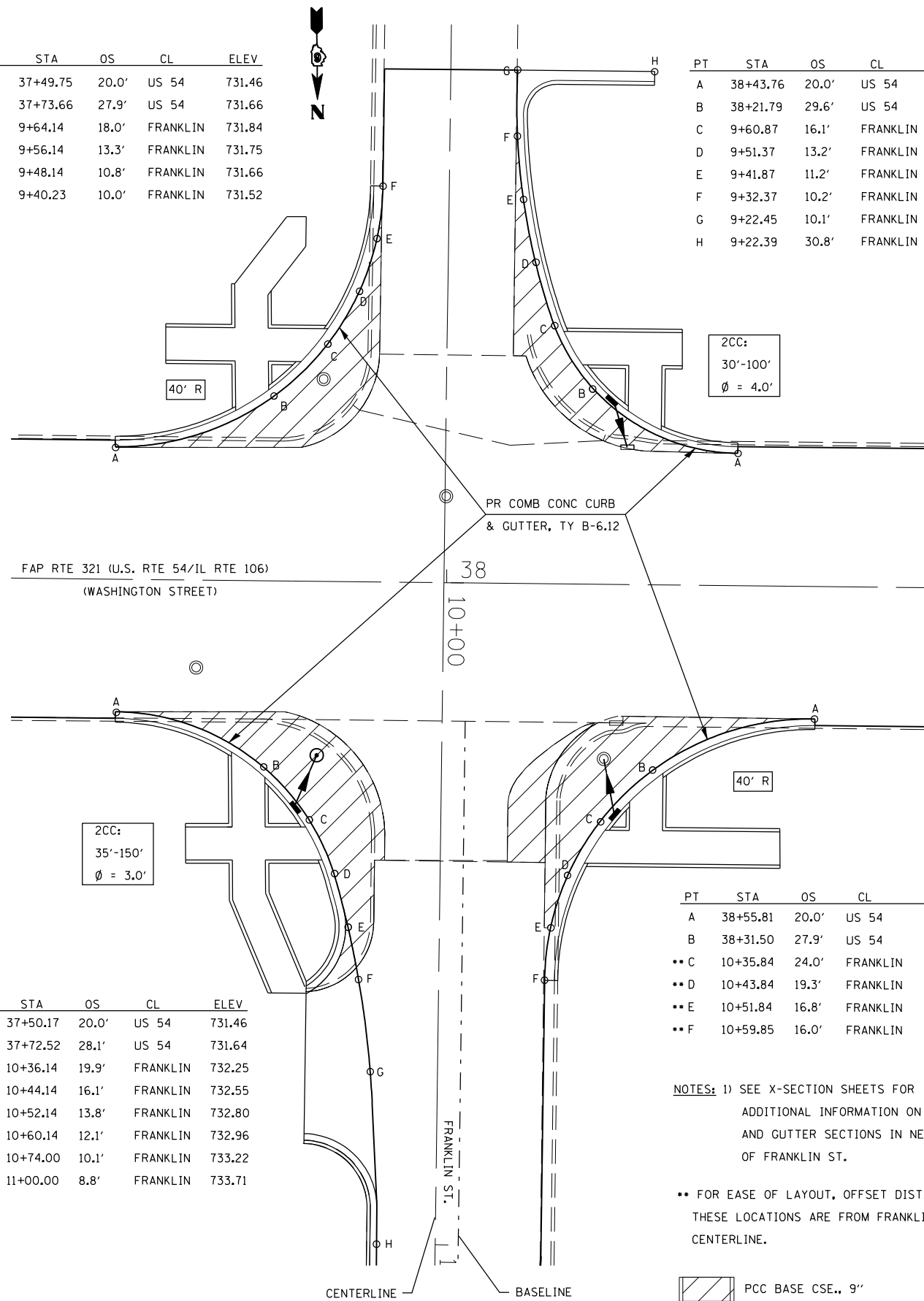
F.A.P. RTE.	SECTION	COUNTY	TOTAL SHEETS	SHEET NO.
321	18(N-1,TS)	PIKE	55	23
STA.		TO STA.		
FED. ROAD DIST. NO.		ILLINOIS	FED. AID PROJECT	

PT	STA	OS	CL	ELEV
A	37+49.75	20.0'	US 54	731.46
B	37+73.66	27.9'	US 54	731.66
C	9+64.14	18.0'	FRANKLIN	731.84
D	9+56.14	13.3'	FRANKLIN	731.75
E	9+48.14	10.8'	FRANKLIN	731.66
F	9+40.23	10.0'	FRANKLIN	731.52

PT	STA	OS	CL	ELEV
A	38+43.76	20.0'	US 54	733.06
B	38+21.79	29.6'	US 54	732.30
C	9+60.87	16.1'	FRANKLIN	731.81
D	9+51.37	13.2'	FRANKLIN	731.68
E	9+41.87	11.2'	FRANKLIN	731.53
F	9+32.37	10.2'	FRANKLIN	731.38
G	9+22.45	10.1'	FRANKLIN	731.19
H	9+22.39	30.8'	FRANKLIN	732.30

PT	STA	OS	CL	ELEV
A	43+33.53	20.0'	US 54	741.19
B	43+49.21	24.4'	US 54	741.34
C	9+66.92	19.7'	CLINTON	741.41
D	9+58.42	15.6'	CLINTON	741.47
E	9+49.92	14.3'	CLINTON	741.37
F	9+39.92	14.2'	CLINTON	741.30
G	9+29.92	14.2'	CLINTON	741.21
H	9+22.14	14.1'	CLINTON	741.14

PT	STA	OS	CL	ELEV
A	44+19.84	20.0'	US 54	742.58
B	43+99.03	28.4'	US 54	741.90
C	9+63.22	15.0'	CLINTON	741.52
D	9+54.72	12.4'	CLINTON	741.44
E	9+46.22	11.8'	CLINTON	741.34
F	9+22.14	11.1'	CLINTON	741.18



PT	STA	OS	CL	ELEV
A	37+50.17	20.0'	US 54	731.46
B	37+72.52	28.1'	US 54	731.64
**C	10+36.14	19.9'	FRANKLIN	732.25
**D	10+44.14	16.1'	FRANKLIN	732.55
**E	10+52.14	13.8'	FRANKLIN	732.80
**F	10+60.14	12.1'	FRANKLIN	732.96
**G	10+74.00	10.1'	FRANKLIN	733.22
**H	11+00.00	8.8'	FRANKLIN	733.71

PT	STA	OS	CL	ELEV
A	38+55.81	20.0'	US 54	733.25
B	38+31.50	27.9'	US 54	732.67
**C	10+35.84	24.0'	FRANKLIN	732.36
**D	10+43.84	19.3'	FRANKLIN	732.59
**E	10+51.84	16.8'	FRANKLIN	732.85
**F	10+59.85	16.0'	FRANKLIN	733.00

PT	STA	OS	CL	ELEV
A	43+36.28	20.0'	US 54	741.24
B	43+57.09	28.4'	US 54	741.37
C	10+36.78	15.0'	CLINTON	741.87
D	10+45.28	12.4'	CLINTON	742.08
E	10+54.23	11.8'	CLINTON	742.27
F	10+81.97	10.4'	CLINTON	742.35

PT	STA	OS	CL	ELEV
A	44+19.07	20.0'	US 54	742.57
B	43+98.29	28.4'	US 54	741.97
C	10+36.72	13.9'	CLINTON	741.88
D	10+44.97	11.2	CLINTON	742.09
E	10+54.07	10.7'	CLINTON	742.29

NOTES: 1) SEE X-SECTION SHEETS FOR ADDITIONAL INFORMATION ON CURB AND GUTTER SECTIONS IN NE QUAD OF FRANKLIN ST.

** FOR EASE OF LAYOUT, OFFSET DISTANCES AT THESE LOCATIONS ARE FROM FRANKLIN ST. CENTERLINE.

PCC BASE CSE., 9"

PCC BASE CSE., 9"

REVISIONS	
NAME	DATE

ILLINOIS DEPARTMENT OF TRANSPORTATION
INTERSECTION DETAILS
 FAP 321 (US 54)
 Section: 18(N-1,TS)
 Pike County

SCALE: 1" = 10'
 DATE: _____ DRAWN BY: TEC
 CHECKED BY: _____

INTERSECTION DETAILS

PLOT DATE = 04-04-2007 01:05:54PM
 FILE NAME = c:\p\projects\655184\ahh\intsectdet.dgn
 PLOT SCALE = 211765 / IN.
 USER NAME = laughlin-1