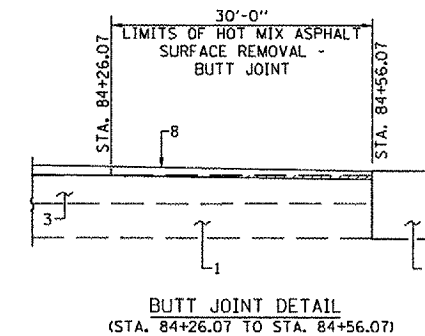
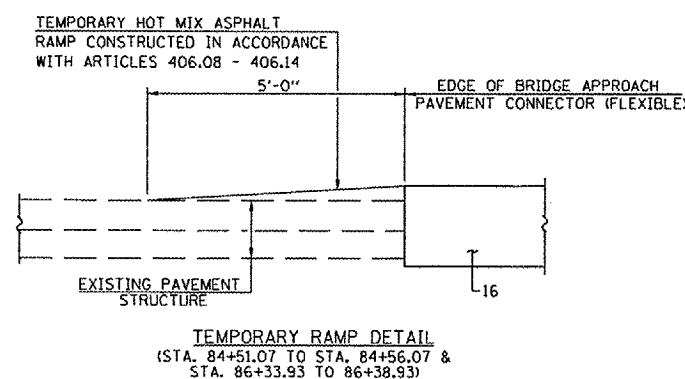
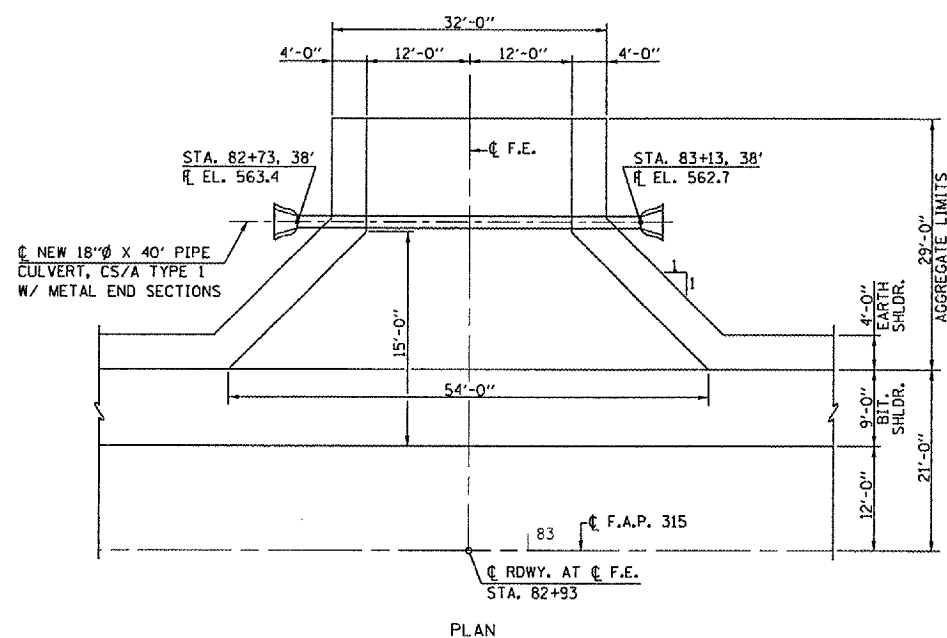
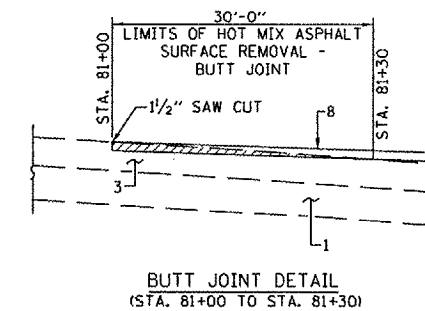
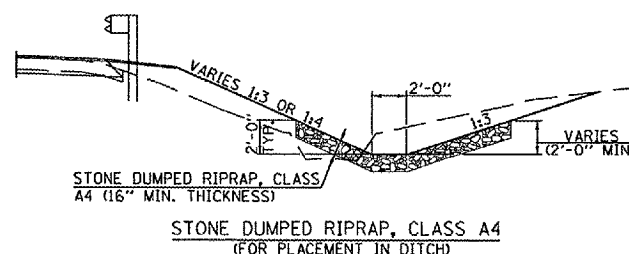
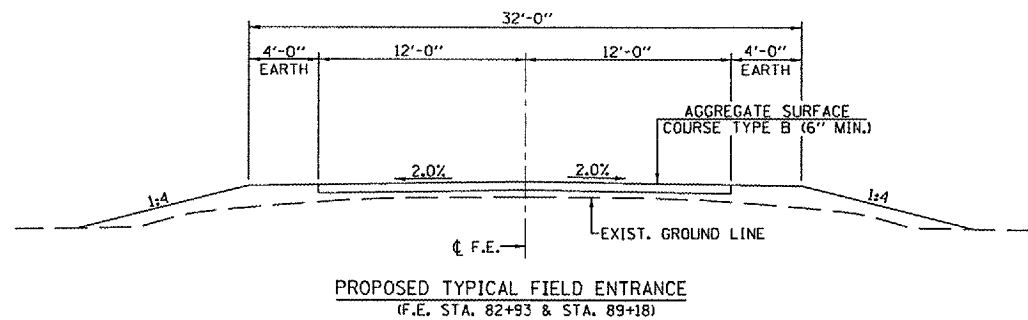


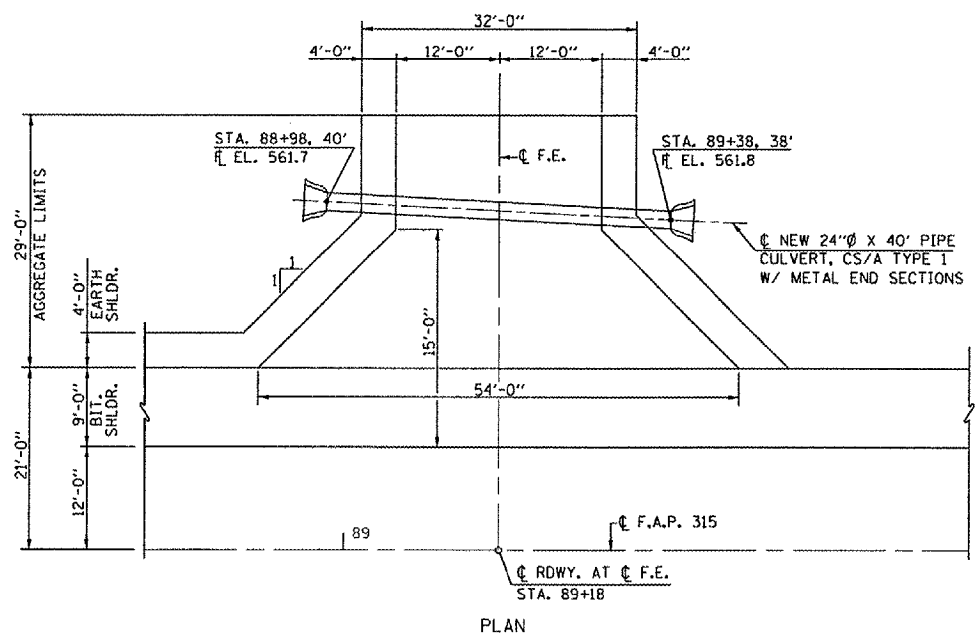
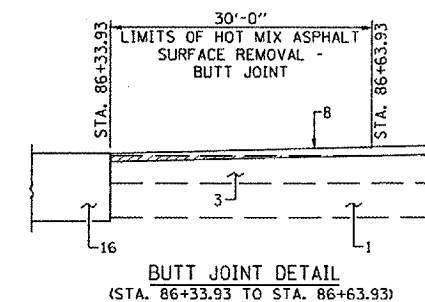
F.A.P. RTE.	SECTION	COUNTY	TOTAL SHEETS	SHEET NO.
315	116(BR-1)	LOGAN	79	7
STA. 81+00 TO STA. 90+00			ILLINOIS FED. AID PROJECT	



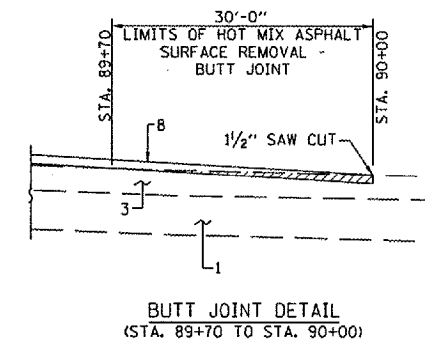
PLAN

PAVEMENT LEGEND

- EXISTING 9"-6"-9" P.C.C. PAVEMENT
- EXISTING HOT MIX ASPHALT BASE COURSE WIDENING 9"
- EXISTING HOT MIX ASPHALT OVERLAY
- EXISTING HOT MIX ASPHALT SHOULDER 8"
- EXISTING AGGREGATE/EARTH SHOULDER
- EXISTING PIPE UNDERDRAIN
- PROPOSED PAVEMENT MARKING - LINE 5"
- PROPOSED HOT MIX ASPHALT SURFACE COURSE 1 1/2"
- TEMPORARY PAVEMENT MARKING - LINE 5"
- PROPOSED HOT MIX ASPHALT SHOULDER 6"
- PROPOSED HOT MIX ASPHALT BASE COURSE 10"
- PROPOSED P.C.C. PAVEMENT 12" (SPECIAL)
- PROPOSED BRIDGE APPROACH PAVEMENT (SPECIAL)
- PROPOSED SUB-BASE GRANULAR MATERIAL TYPE A 4"
- PROPOSED AGGREGATE SHOULDERS, TYPE B (SPECIAL)
- PROPOSED BRIDGE APPROACH PAVEMENT CONNECTOR (FLEXIBLE)



PLAN



DETAILS & TYPICAL ROADWAY SECTIONS
 F.A.P. 315 - (U.S. 136)
 OVER PRAIRIE CREEK DITCH
 SECTION 116(BR-1)
 LOGAN COUNTY
 STA. 85+45.00
 S.N. 054-0024

PLOT DATE: 5/20/21
 FILE NAME: 8024.dwg
 MODEL NAME: DETAILS