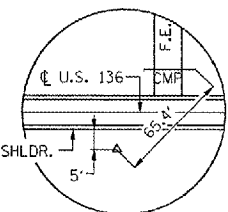


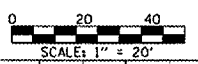
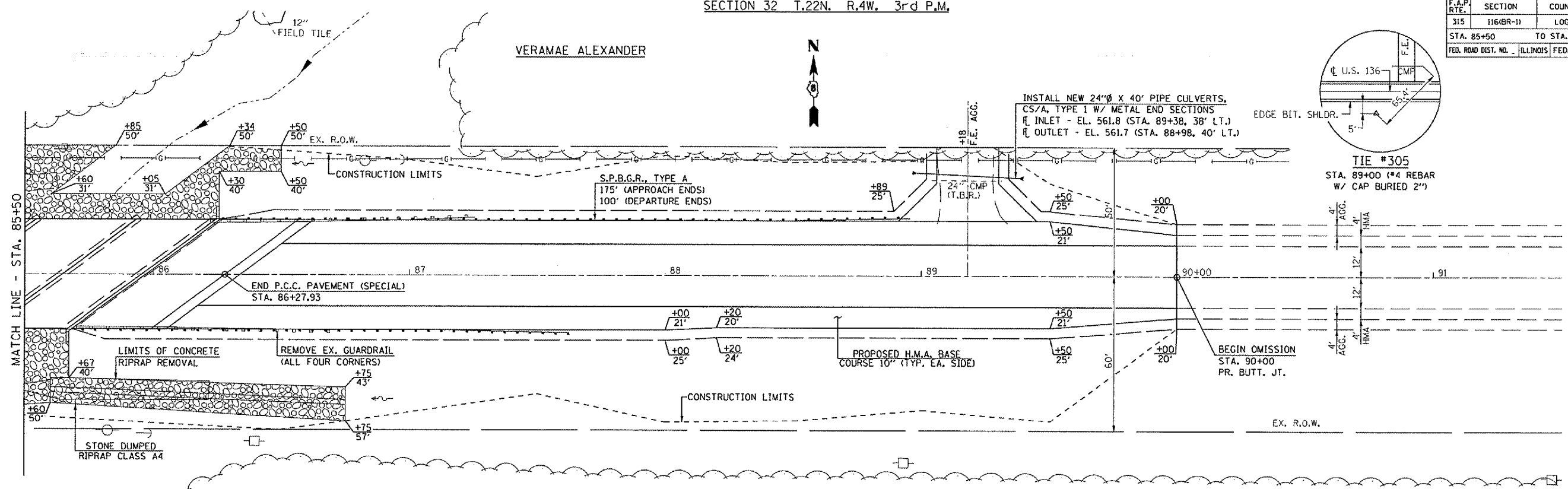
F.A.P. RTE.	SECTION	COUNTY	TOTAL SHEETS	SHEET NO.
315	116(BR-1)	LOGAN	79	13
STA. 85+50		TO STA. 91+00		
FED. ROAD DIST. NO. 1		ILLINOIS FED. AID PROJECT		

SECTION 32 T.22N. R.4W. 3rd P.M.



TIE #305  
STA. 89+00 (#4 REBAR  
W/ CAP BURIED 2')

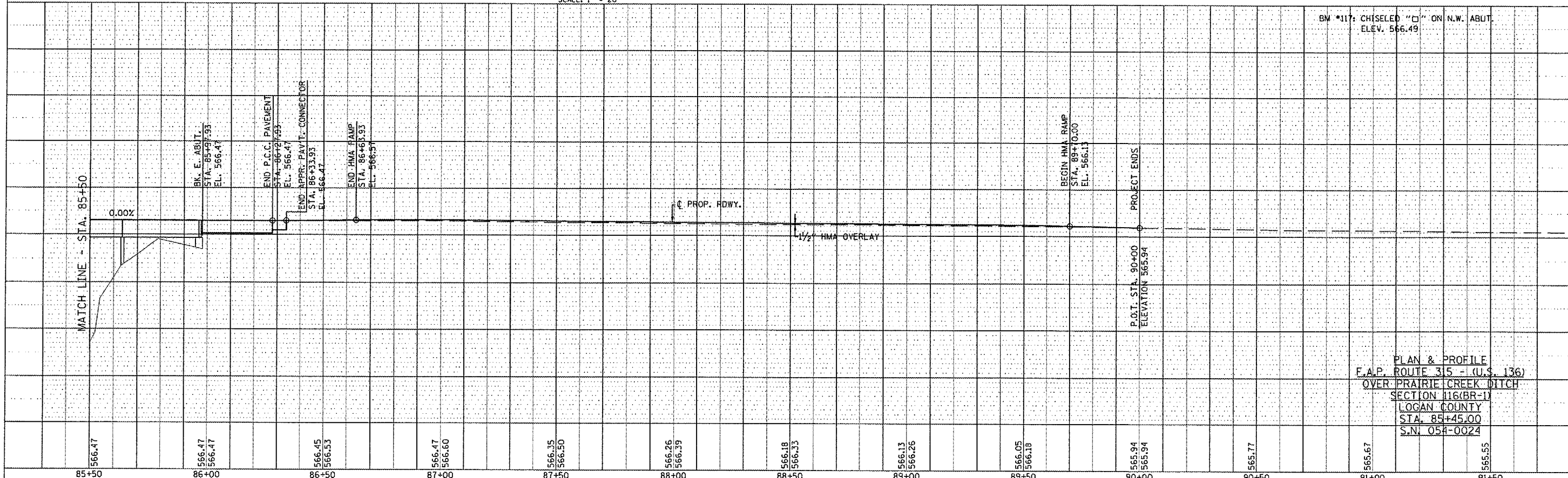
INSTALL NEW 24"Ø X 40' PIPE CULVERTS,  
CS/A, TYPE 1 W/ METAL END SECTIONS  
R<sub>1</sub> INLET - EL. 561.8 (STA. 89+38, 38' LT.)  
R<sub>2</sub> OUTLET - EL. 561.7 (STA. 88+98, 40' LT.)



SECTION 5 T.22N. R.4W. 3rd P.M.

DATE	BY
DATE	BY
DATE	BY

DATE	BY
DATE	BY
DATE	BY



BM #117: CHISELED "Ø" ON N.W. ABUT.  
ELEV. 566.49

PLAN & PROFILE  
F.A.P. ROUTE 315 - (U.S. 136)  
OVER PRAIRIE CREEK DITCH  
SECTION 116(BR-1)  
LOGAN COUNTY  
STA. 85+45.00  
S.N. 05H-0024

PLOT DATE: 5/20/2007 02:58:58PM  
MODEL NAME: 8024.dwg  
MODEL NAME: 8024.dwg