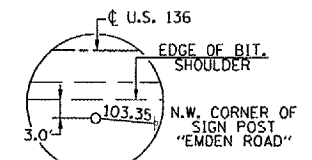


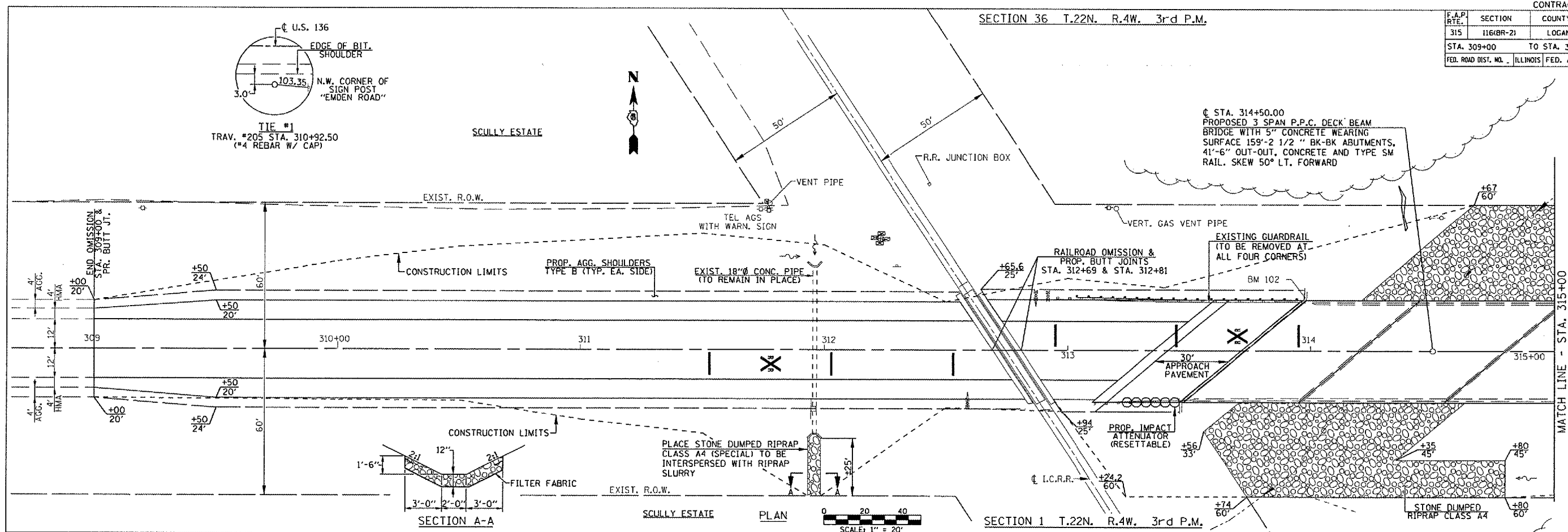
F.A.P. RTE.	SECTION	COUNTY	TOTAL SHEETS	SHEET NO.
315	116BR-21	LOGAN	79	14
STA. 309+00		TO STA. 318+90		
FED. ROAD DIST. NO. ILLINOIS FED. AID PROJECT				

SECTION 36 T.22N. R.4W. 3rd P.M.



SCULLY ESTATE

© STA. 314+50.00
PROPOSED 3 SPAN P.P.C. DECK BEAM
BRIDGE WITH 5" CONCRETE WEARING
SURFACE 159'-2 1/2" BK-BK ABUTMENTS,
4'-6" OUT-OUT, CONCRETE AND TYPE SM
RAIL. SKEW 50° LT. FORWARD



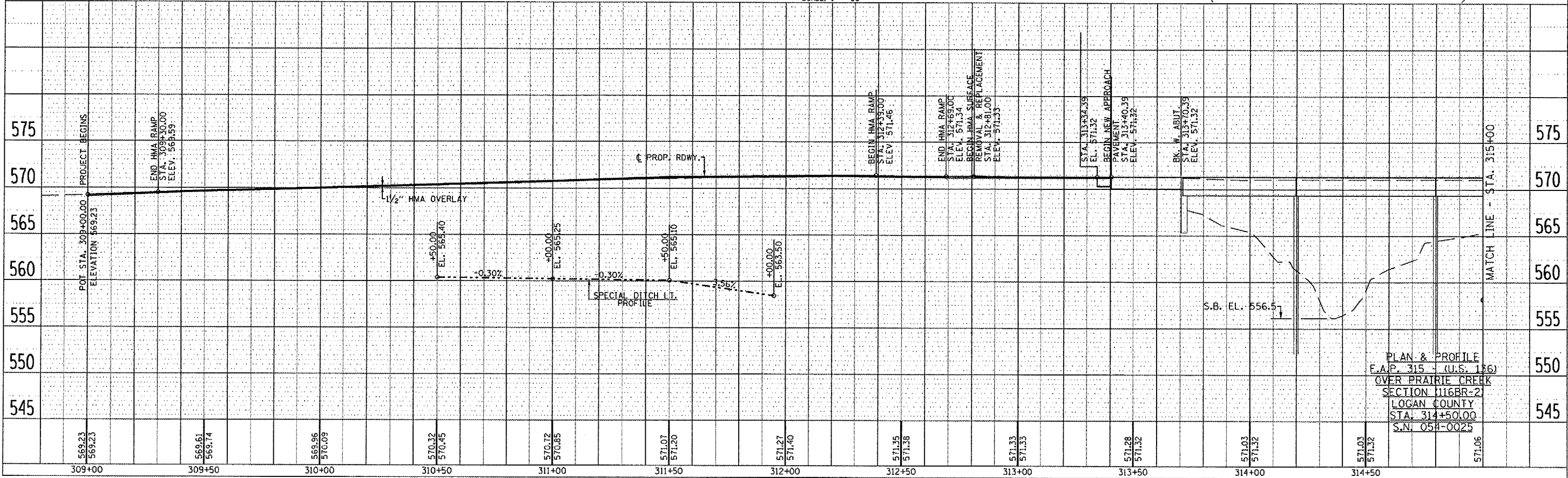
SECTION A-A

PLAN

SECTION 1 T.22N. R.4W. 3rd P.M.

DATE	BY

DATE	BY



PLAN & PROFILE
E.A.P. 315 - (U.S. 136)
OVER PRAIRIE CREEK
SECTION 116BR-21
LOGAN COUNTY
STA. 314+50.00
S.N. 054-0025

PLOT DATE: Sep-21-2007 02:59:28PM
 FILE NAME: I:\projects\116BR-21\116BR-21.dwg
 MODEL NAME: 01.dwg