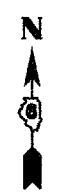
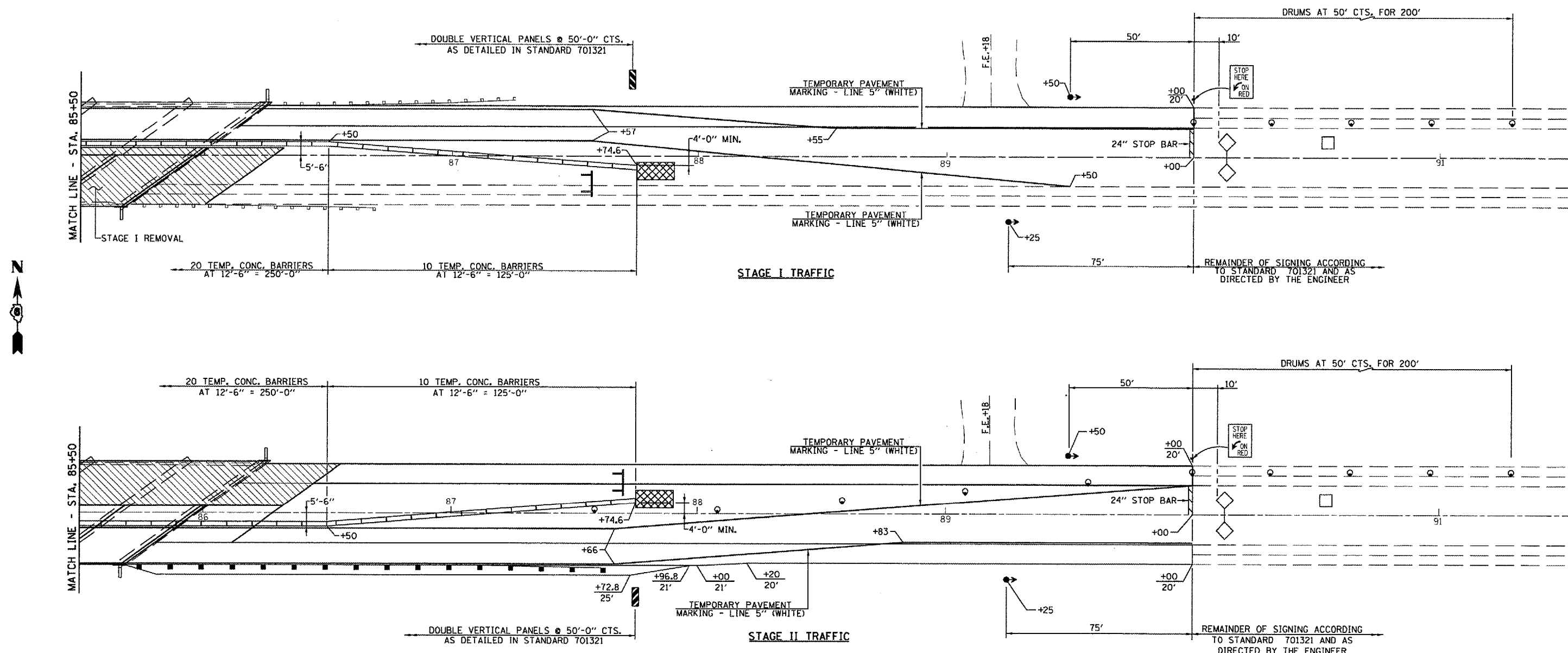


F.A.P. RTE.	SECTION	COUNTY	TOTAL SHEETS	SHEET NO.
315	116(BR-1)	LOGAN	79	18
STA. 81+00		TO STA. 90+00		
FED. ROAD DIST. NO.		ILLINOIS FED. AID PROJECT		



TRAFFIC CONTROL SCHEDULE

LOCATION STATION TO STATION	TEMP. CONC. BARRIER (FOOT)	RELOCATE TEMP. CONC. BARRIER (FOOT)	IMPACT ATTENUATOR TEMPORARY (EACH)	RELOCATE IMPACT ATTENUATOR (EACH)
<b>STAGE I</b>				
STA. 82+60 TO STA. 82+75			1	
STA. 82+75 TO STA. 87+75	500			
STA. 87+75 TO STA. 87+90			1	
<b>STAGE II</b>				
STA. 82+60 TO STA. 82+75				1
STA. 82+75 TO STA. 87+75		500		
STA. 87+75 TO STA. 87+90				1
<b>TOTAL</b>	<b>500</b>	<b>500</b>	<b>2</b>	<b>2</b>

SCHEDULE TEMPORARY PAVEMENT MARKING & WORK ZONE PAVEMENT MARKING REMOVAL

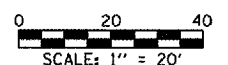
LOCATION STATION TO STATION	TEMP. PAV'T. MARKING LINE - 5" (FOOT)	WORK ZONE PAVEMENT MARKING REMOVAL (SQ. FT.)
<b>STAGE I</b>		
STA. 81+00 TO STA. 90+00	900	378
<b>STAGE II</b>		
STA. 81+00 TO STA. 90+00	900	378
SHORT TERM PAVEMENT MARKING & DIAGONALS		106
<b>TOTAL</b>	<b>1800</b>	<b>862</b>

SYMBOLS

- WORK AREA
- SIGN
- TYPE III BARRICADE
- DRUM WITH STEADY BURNING LIGHT
- TRAFFIC SIGNAL
- TEMPORARY RUMBLE STRIP
- INDUCTION LOOP DETECTOR
- DOUBLE VERTICAL PANEL
- TYPE C BIDIRECTIONAL REFLECTOR
- TEMPORARY CONCRETE BARRIER
- IMPACT ATTENUATOR
- STEADY BURNING LIGHTS AND DOUBLE VERTICAL PANELS

NOTE: WORK THIS SHEET WITH SHEETS 16 & 17 OF 79.

**STAGING DETAILS**  
 F.A.P. 315 - (U.S. 136)  
 OVER PRAIRIE CREEK DITCH  
 LOGAN COUNTY  
 STA. 85+45.00  
 S.N. 054-0024



PLOT DATE = 7/9/2007  
 FILE NAME = sht 817-818.dgn  
 MODEL NAME = Default