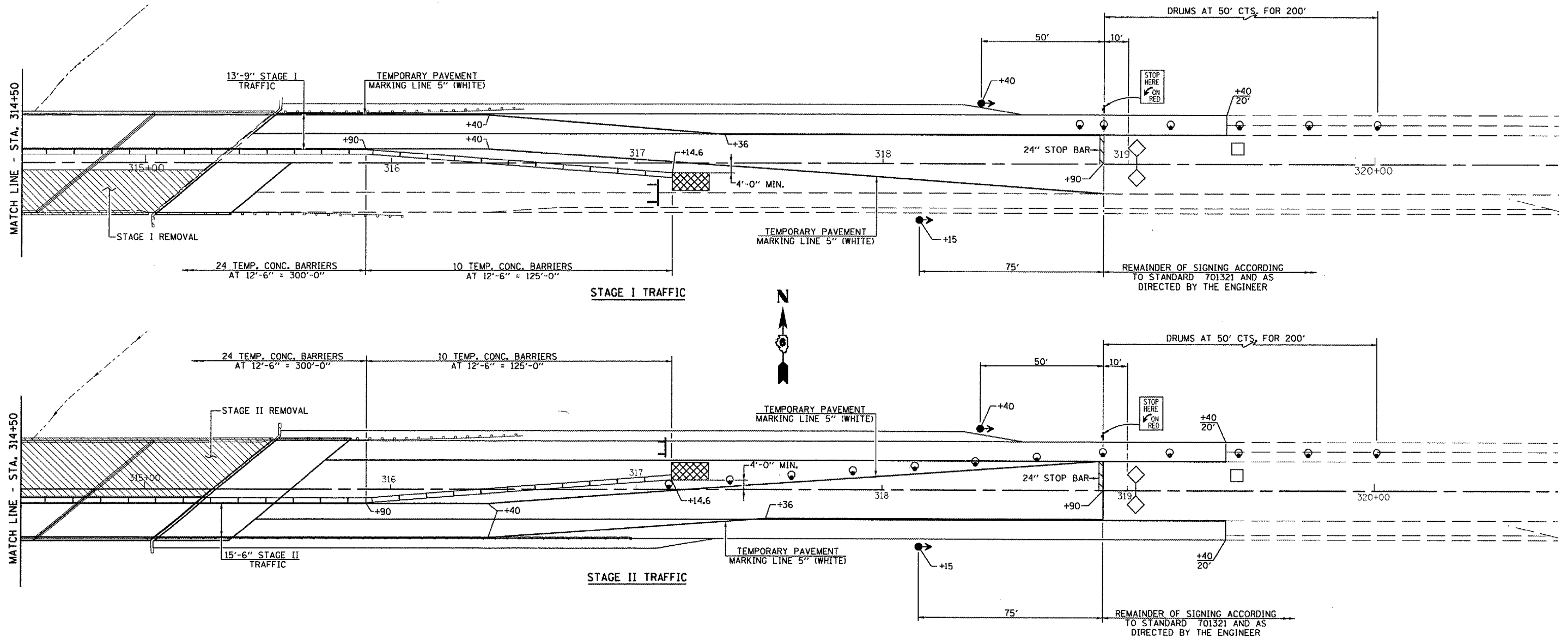


F.A.P. RTE.	SECTION	COUNTY	TOTAL SHEETS	SHEET NO.
315	116(BR-2)	LOGAN	79	21
STA. 309+00		TO STA. 318+90		
FED. ROAD DIST. NO.		ILLINOIS FED. AID PROJECT		



TRAFFIC CONTROL SCHEDULE

LOCATION STATION TO STATION	TEMP. CONC. BARRIER (FOOT)	RELOCATE TEMP. CONC. BARRIER (FOOT)	IMPACT ATTENUATOR TEMPORARY (EACH)	RELOCATE IMPACT ATTENUATOR (EACH)
STAGE I				
STA. 310+60.6 TO STA. 310+75.6			1	
STA. 310+75.6 TO STA. 312+37.5	162.5			
STA. 312+37.5 TO STA. 312+52.5			1	
STA. 313+00 TO STA. 313+15			1	
STA. 313+15 TO STA. 317+14.6	400			
STA. 317+14.6 TO STA. 317+29.6			1	
STAGE II				
STA. 310+60.6 TO STA. 310+75.6				1
STA. 310+75.6 TO STA. 312+37.5		162.5		
STA. 312+37.5 TO STA. 312+52.5			1	
STA. 313+00 TO STA. 313+15			1	
STA. 313+15 TO STA. 317+14.6		400		
STA. 317+14.6 TO STA. 317+29.6			1	
TOTAL	562.5	562.5	4	4

SCHEDULE
TEMPORARY PAVEMENT MARKING &
WORK ZONE PAVEMENT MARKING REMOVAL

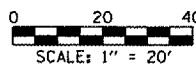
LOCATION STATION TO STATION	TEMP. PAV'T. MARKING LINE - 5" (FOOT)	WORK ZONE PAVEMENT MARKING REMOVAL (SQ. FT.)
STAGE I		
STA. 309+00 TO STA. 318+90 (C)	990	416
STAGE II		
STA. 309+00 TO STA. 318+90 (C)	990	416
SHORT TERM PAV'T. MARKING & DIAGONALS		117
TOTAL	1980	949

SYMBOLS

- WORK AREA
- SIGN
- TYPE III BARRICADE
- DRUM WITH STEADY BURNING LIGHT
- TRAFFIC SIGNAL
- TEMPORARY RUMBLE STRIP
- INDUCTION LOOP DETECTOR
- DOUBLE VERTICAL PANEL
- TYPE C BIDIRECTIONAL REFLECTOR
- TEMPORARY CONCRETE BARRIER
- IMPACT ATTENUATOR
- STEADY BURNING LIGHTS AND DOUBLE VERTICAL PANELS

NOTE: WORK THIS SHEET WITH SHEETS 19 & 20 OF 79.

STAGING DETAILS
F.A.P. ROUTE 315 - (U.S. 136)
OVER PRAIRIE CREEK
SECTION 116(BR-2)
LOGAN COUNTY
STA. 314+50
S.N. 054-0025



PLOT DATE = 7/3/2007
 FILE NAME = HW 820-821.dgn
 MODEL NAME = Default