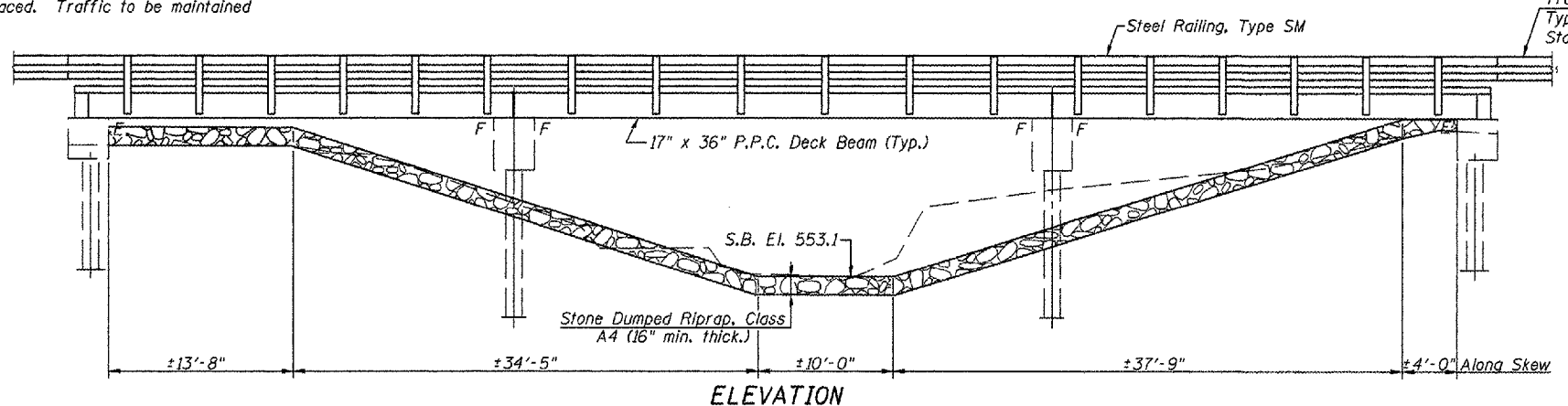


F.A.P. RTE.	SECTION	COUNTY	TOTAL SHEETS	SHEET NO.
315	116(BR-1)	LOGAN	79	28
STA. 81+00		TO STA. 90+00		
FED. ROAD DIST. NO. ILLINOIS FED. AID PROJECT				

Benchmark: Chiseled "□" on N.W. Abutment, Elev. 566.485  
 Existing Structure: S.N. 054-0024 was originally built as F.A. 119, Sec. 116B, Sta. 85+45 in 1936. The original structure was a three span steel I beam bridge with a reinforced concrete deck supported on reinforced concrete pile bent abutments and piers. In 1975, the superstructure was removed and replaced with P.P.C. Deck Beams (17") under F.A. 119, Sec. 116BR at Sta. 85+45.00

Proposed Improvement: Existing P.P.C. Deck Beams are to be removed and replaced. Traffic to be maintained utilizing stage construction.  
 No Salvage

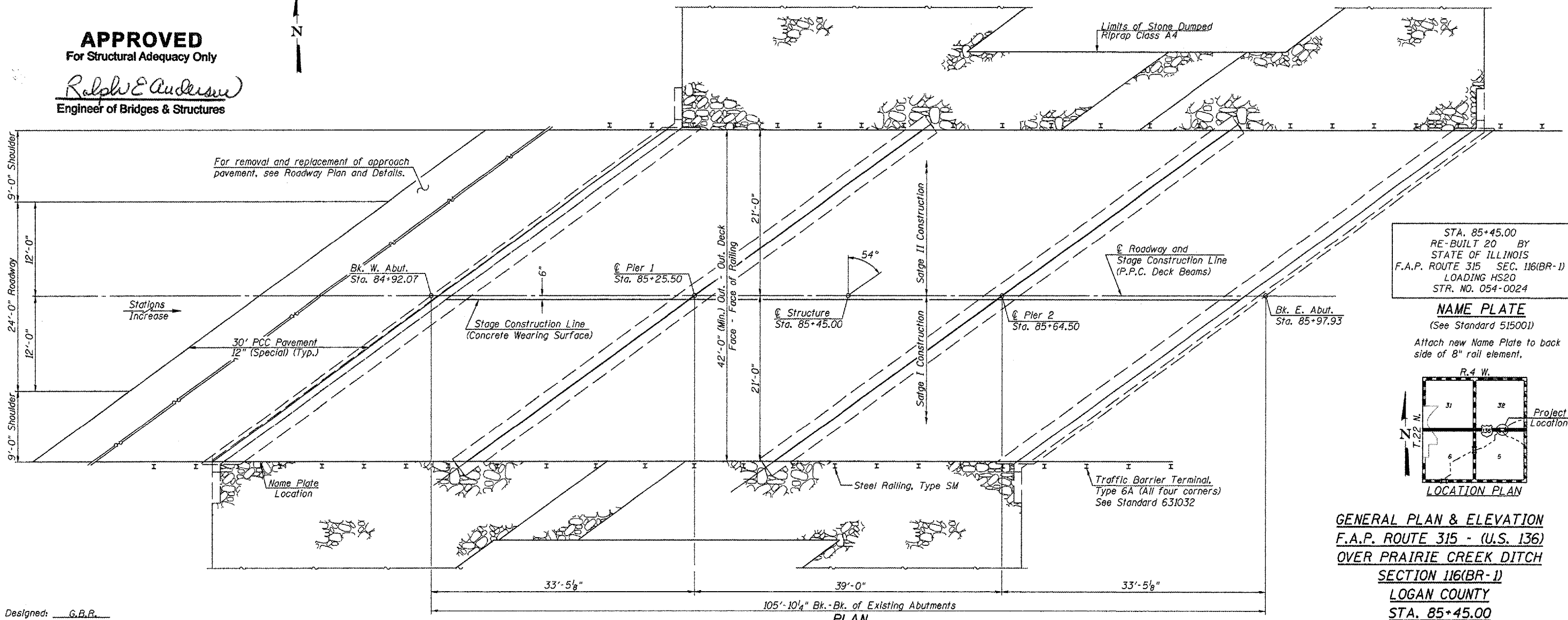
- INDEX OF SHEETS**
1. General Plan and Elevation
  2. General Notes and Bill of Material
  3. Stage Construction Details
  4. Temporary Concrete Barrier For Stage Construction
  5. Deck Beam Details - Spans 1 & 3
  6. Deck Beam Details - Span 2
  7. Superstructure
  8. Superstructure Details
  9. Steel Railing, Type SM
  10. West Abutment Removal
  11. West Abutment
  12. East Abutment Removal
  13. East Abutment
  14. Substructure Details
  15. Bar Splicer Assembly Details



Traffic Barrier Terminal, Type 6A (All four corners) Standard 631032

Professional Engineer Seal for Gerald B. Rotterham, License No. 081-006873, expires 11/30/2008.

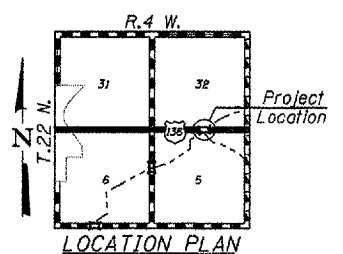
**APPROVED**  
 For Structural Adequacy Only  
*Ralph E. Anderson*  
 Engineer of Bridges & Structures



STA. 85+45.00  
 RE-BUILT 20 BY  
 STATE OF ILLINOIS  
 F.A.P. ROUTE 315 SEC. 116(BR-1)  
 LOADING HS20  
 STR. NO. 054-0024

**NAME PLATE**  
 (See Standard 515001)

Attach new Name Plate to back side of 8" rail element.



**GENERAL PLAN & ELEVATION**  
 F.A.P. ROUTE 315 - (U.S. 136)  
 OVER PRAIRIE CREEK DITCH  
 SECTION 116(BR-1)  
 LOGAN COUNTY  
 STA. 85+45.00  
 S.N. 054-0024

Designed: G.B.P.  
 Checked: M.A.H.  
 Drawn: J.R.P.  
 Checked: G.B.P.

PLOT DATE = 04/07/08  
 FILE NAME = #FILEL8