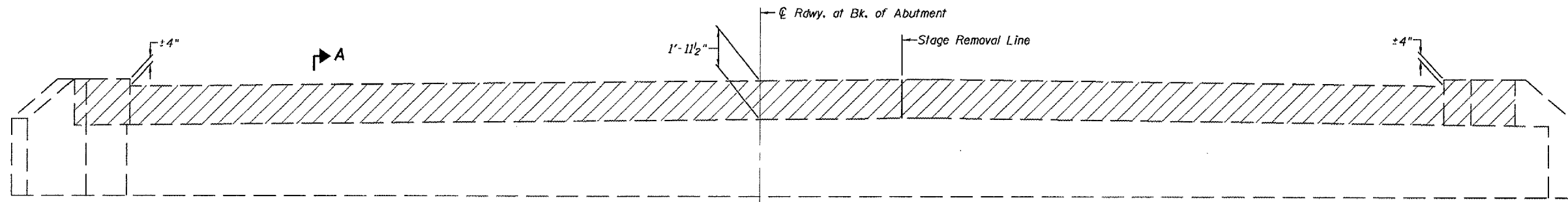
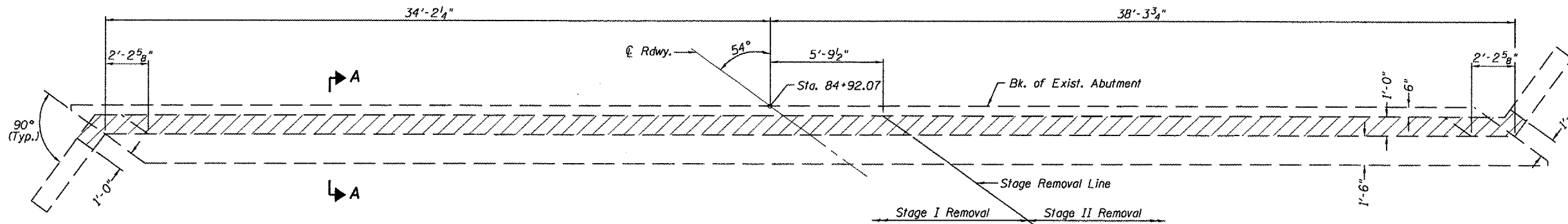


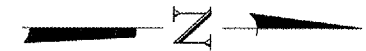
F.A.P. RTE.	SECTION	COUNTY	TOTAL SHEETS	SHEET NO.
315	116(BR-1)	LOGAN	79	37
STA. 81+00		TO STA. 90+00		
FED. ROAD DIST. NO.		ILLINOIS	FED. AID PROJECT	



ELEVATION
(Looking West)



PLAN

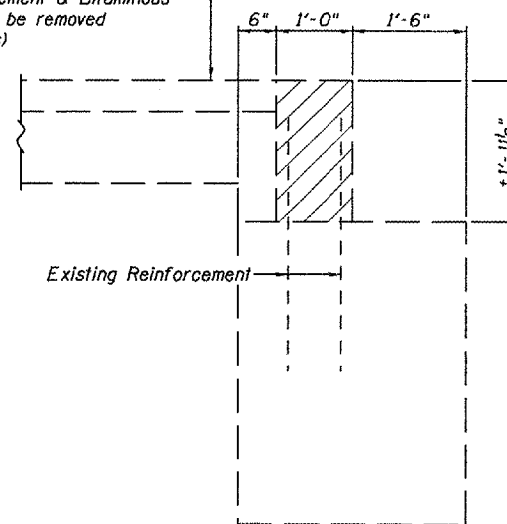


LEGEND

- Concrete Removal

Notes: Existing reinforcing steel shall be cleaned, straightened, cut (if required), and incorporated into new construction. Damaged reinforcing steel shall be replaced or removed as directed by the Engineer. Cost included with "Concrete Removal".
Removal of the existing joint system is included in the cost of "Concrete Removal".

Existing P.C.C. Pavement & Bituminous Wearing Surface to be removed (See Roadway Plans)



SECTION A-A

(Dimensions are at Rt. angles to abutment)

BILL OF MATERIAL

ITEM	UNIT	QUANTITY
Concrete Removal	Cu. Yd.	5.5

WEST ABUTMENT REMOVAL
F.A.P. ROUTE 315 - (U.S. 136)
OVER PRAIRIE CREEK DITCH
SECTION 116(BR-1)
LOGAN COUNTY
STA. 85+45.00
S.N. 054-0024

PLOT DATE = 7/9/2007
FILE NAME = G:\Projects\116(BR-1)\116(BR-1)\Allen_Henderson_fund\116(BR-1) 028-01.dgn
PLOT NAME = 116(BR-1) 028-01.dgn