

F.A.P. RTE.	SECTION	COUNTY	TOTAL SHEETS	SHEET NO.
315		MASON	11	1

*D-6 SHLDR RUMBLE STRIPS 2008-2

STATE OF ILLINOIS
DEPARTMENT OF TRANSPORTATION
DIVISION OF HIGHWAYS

**PROPOSED
HIGHWAY PLANS**

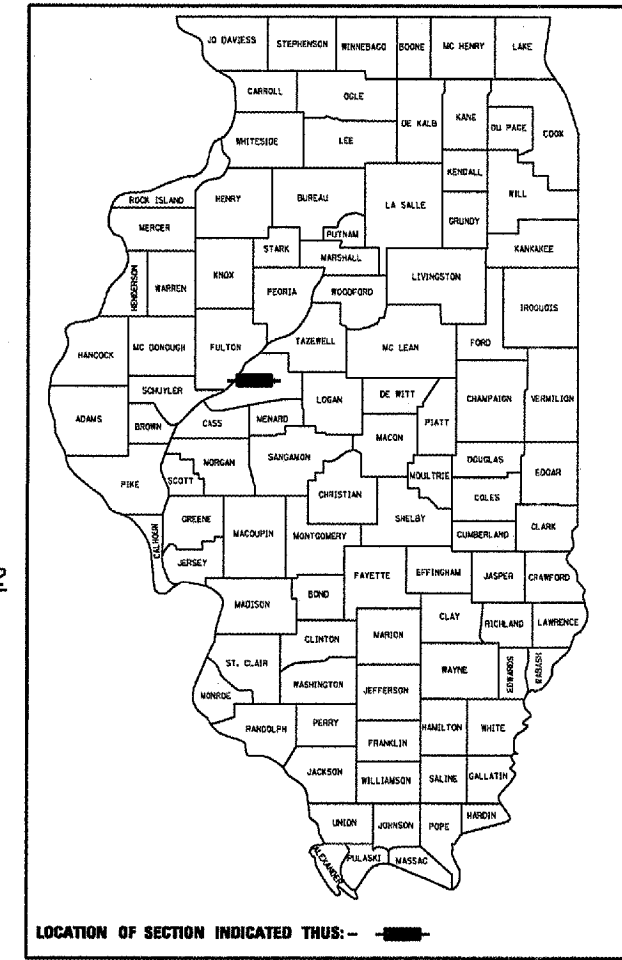
FOR INDEX OF SHEETS, SEE SHEET NO. 2

HIGHWAY CLASSIFICATION

F.A.P. Route 315 (US 136)
OTHER PRINCIPLE ARTERIAL

A.D.T.	- 1,850 (2008)	PV = 69.0%
A.D.T.	- 2,200 (2028)	SU = 6.0%
DESIGN SPEED	- 55 mph	MU = 25.0%
POSTED SPEED	- 55 mph	

F.A.P. ROUTE 315 (US 136)
SECTION D-6 SHLDR RUMBLE STRIPS 2008-2
PROJECT: ACHSIP-0315(052)
MASON COUNTY
C-96-107-07



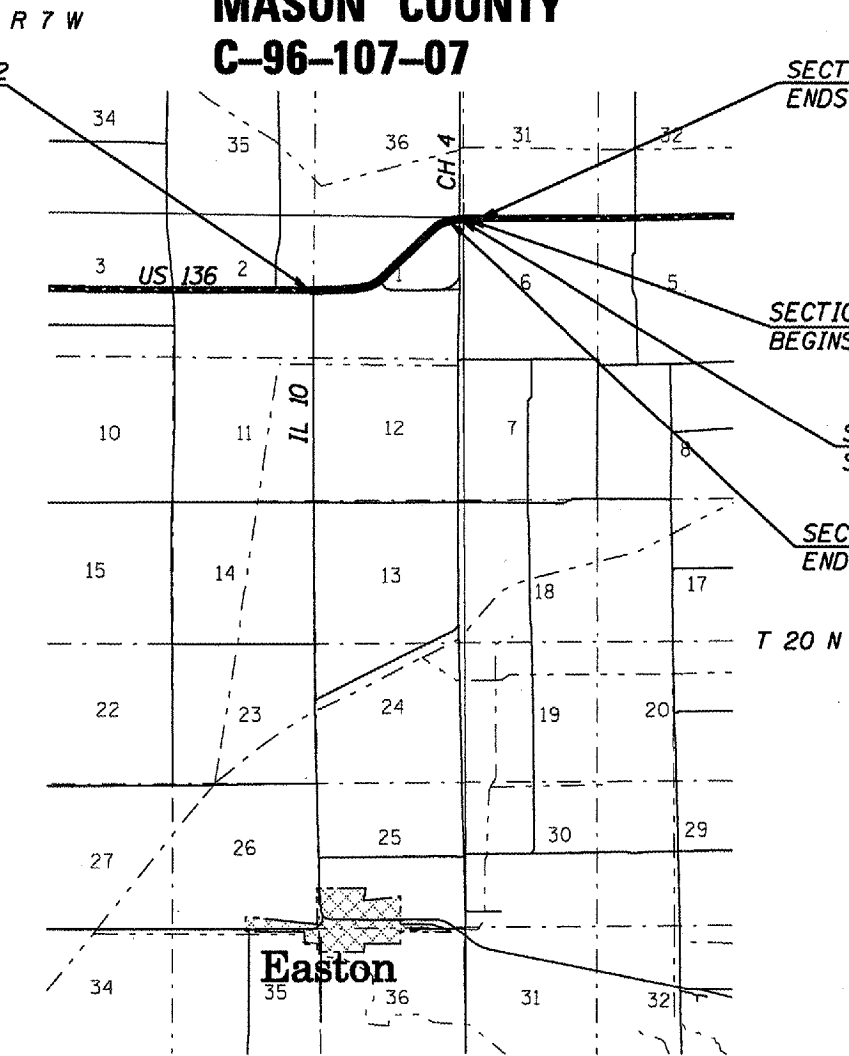
SECTION D-6 SHLDR RUMBLE STRIPS 2008-2
BEGINS AT STA. 572+65.00

SECTION D-6 SHLDR RUMBLE STRIPS 2008-2
ENDS AT STA. 641+68.50

SECTION D-6 SHLDR RUMBLE STRIPS 2008-2
BEGINS AT STA. 637+74.50

SIDE ROAD OMISSION (CH 4)
STA. 637+19.00 TO 637+74.50

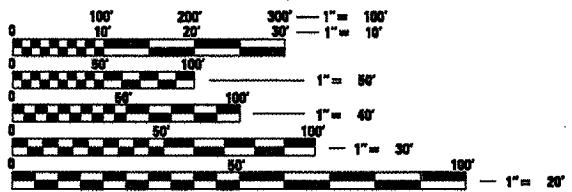
SECTION D-6 SHLDR RUMBLE STRIPS 2008-2
ENDS AT STA. 637+19.00



Easton

LOCATION MAP

GROSS LENGTH = 6,903.50 ft. = 1.31 mi.
NET LENGTH = 6,848.00 ft. = 1.30 mi.



FULL SIZE PLANS HAVE BEEN PREPARED USING STANDARD ENGINEERING SCALES. REDUCED SIZED PLANS WILL NOT CONFORM TO STANDARD SCALES. IN MAKING MEASUREMENTS ON REDUCED PLANS, THE ABOVE SCALES MAY BE USED.

J.U.L.I.E.
JOINT UTILITY LOCATION INFORMATION FOR EXCAVATION
1-800-892-0123

CONTRACT NO. 72B30

STATE OF ILLINOIS
DEPARTMENT OF TRANSPORTATION
DIVISION OF HIGHWAYS

SUBMITTED Dec 10 20 07

[Signature]
DEPUTY DIRECTOR OF HIGHWAYS, REGION ENGINEER

Dec 7 20 07
[Signature]
ENGINEER OF DESIGN AND ENVIRONMENT

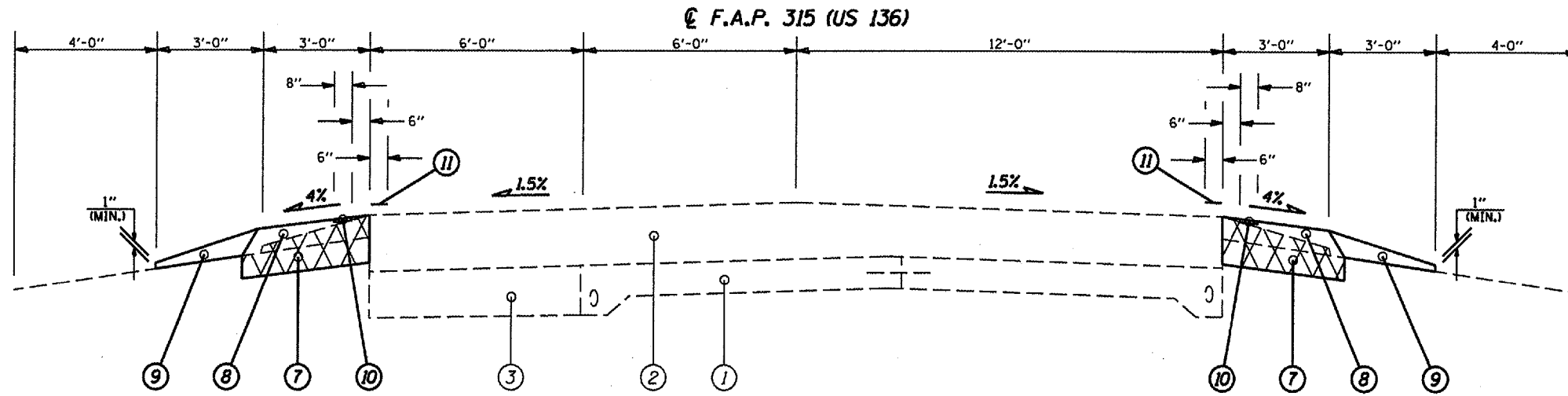
Dec 7 20 07
[Signature]
DIRECTOR OF HIGHWAYS, CHIEF ENGINEER

**PRINTED BY THE AUTHORITY
OF THE STATE OF ILLINOIS**

PROJECT ENGINEER: SAL MADONIA (217) 782-4761
SQUAD LEADER: RENE CABRERA (217) 557-9062
JONATHAN COX

CONTRACT NO. 72B30

F.A.P. RTE.	SECTION	COUNTY	TOTAL SHEETS	SHEET NO.
315	*	MASON	11	4
STA. **	TO STA. **			
FED. ROAD DIST. NO.	ILLINOIS	FED. AID PROJECT		
*D-6 SHLDR RUMBLE STRIPS 2008-2				
**572+65.00 TO 611+74.18				
635+34.31 TO 641+68.50				

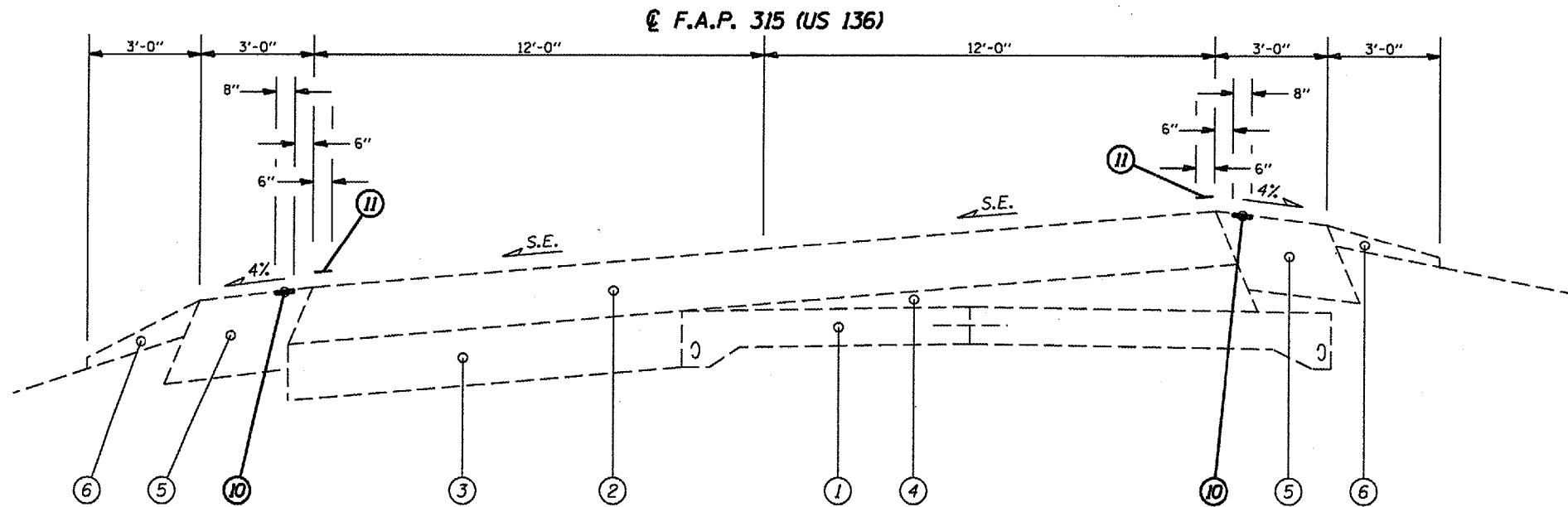


- (1) STA 572+65.00 TO STA 582+77.57 [1,012.57']
- (3) STA 606+14.91 TO STA 611+74.18 [559.27']
- (7) STA 635+34.31 TO STA 637+19.00 [184.69']
- (8) STA 637+74.50 TO STA 641+68.50 [394']

SIDE ROAD OMISSION
 CH 4 (2800 E. INTR.)
 STA 637+19.00 TO
 STA 637+74.50

LEGEND

- ① EXISTING P.C.C. PAVEMENT 9"-6"-9"
- ② EXISTING BITUMINOUS OVERLAY
- ③ EXISTING P.C.C. BASE COURSE WIDENING 9"
- ④ EXISTING BITUMINOUS CONCRETE BINDER COURSE (VAR DEPTH)
- ⑤ EXISTING BITUMINOUS SHOULDER, 8"
- ⑥ EXISTING AGGREGATE SHOULDER, TYPE B
- ⑦ PROPOSED EXCAVATING AND GRADING EXISTING SHOULDER
- ⑧ PROPOSED HOT-MIX ASPHALT SHOULDERS 8"
- ⑨ PROPOSED AGGREGATE SHOULDERS, TYPE B
- ⑩ PROPOSED SHOULDER RUMBLE STRIP
- ⑪ PROPOSED PAINT PAVEMENT MARKING - LINE 5"



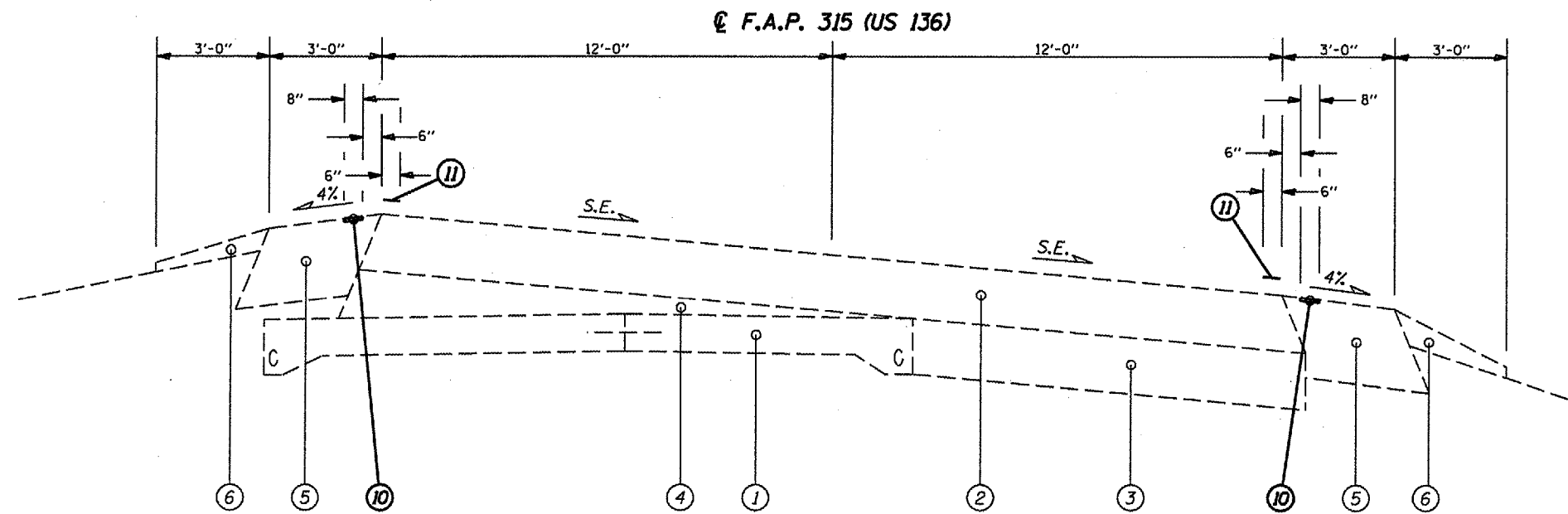
- (2) STA 582+77.57 TO STA 606+14.91 [2,337.34']

NOT TO SCALE

REVISIONS		ILLINOIS DEPARTMENT OF TRANSPORTATION
NAME	DATE	
		TYPICAL SECTIONS F.A.P. Route 315 (US 136) Section D-6 SHLDR RUMBLE STRIPS 2008-2 MASON COUNTY SCALE: VERT. _____ HORIZ. _____ DATE: MAY 15, 2007
DRAWN BY: JWC		CHECKED BY: RSC
DATE: MAY 15, 2007		

CONTRACT NO. 72B30

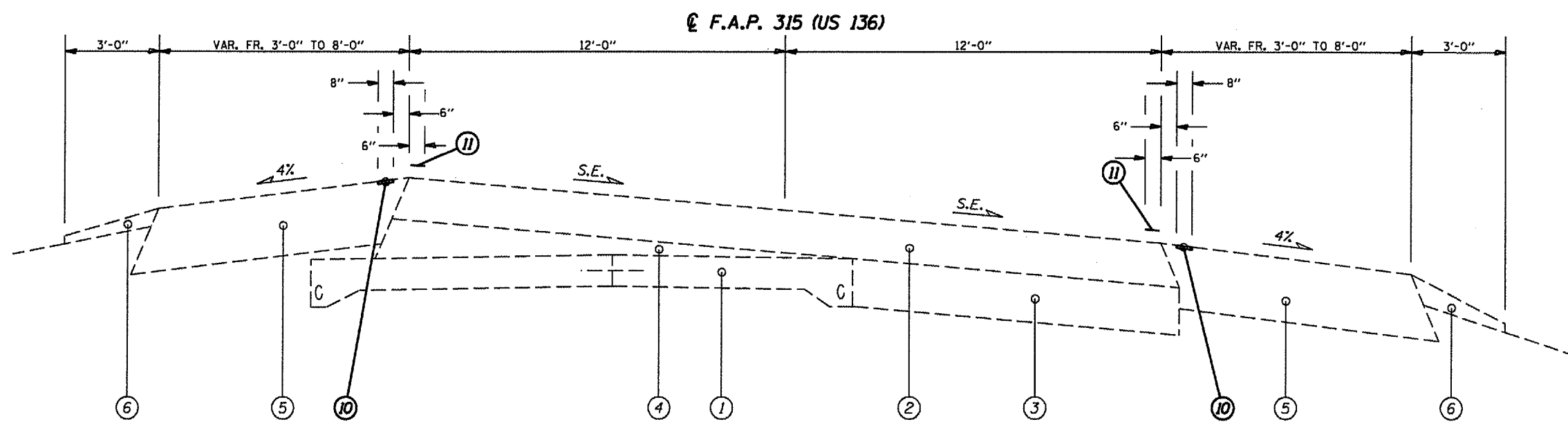
F.A.P. RTE.	SECTION	COUNTY	TOTAL SHEETS	SHEET NO.
315		MASON	11	5
STA. 611+74.18		TO STA. 635+34.31		
FED. ROAD DIST. NO.		ILLINOIS	FED. AID PROJECT	
+D-6 SHLDR RUMBLE STRIPS 2008-2				



(4) STA 611+74.18 TO STA 625+25.00 [1,350.82']
 (6) STA 627+60.00 TO STA 635+34.31 [774.31']

LEGEND

- ① EXISTING P.C.C. PAVEMENT 9"-6"-9"
- ② EXISTING BITUMINOUS OVERLAY
- ③ EXISTING P.C.C. BASE COURSE WIDENING 9"
- ④ EXISTING BITUMINOUS CONCRETE BINDER COURSE (VAR DEPTH)
- ⑤ EXISTING BITUMINOUS SHOULDER, 8"
- ⑥ EXISTING AGGREGATE SHOULDER, TYPE B
- ⑦ PROPOSED EXCAVATING AND GRADING EXISTING SHOULDER
- ⑧ PROPOSED HOT-MIX ASPHALT SHOULDERS 8"
- ⑨ PROPOSED AGGREGATE SHOULDERS, TYPE B
- ⑩ PROPOSED SHOULDER RUMBLE STRIP
- ⑪ PROPOSED PAINT PAVEMENT MARKING - LINE 5"



(5) STA 625+25.00 TO STA 627+60.00 [235.00']

NOT TO SCALE

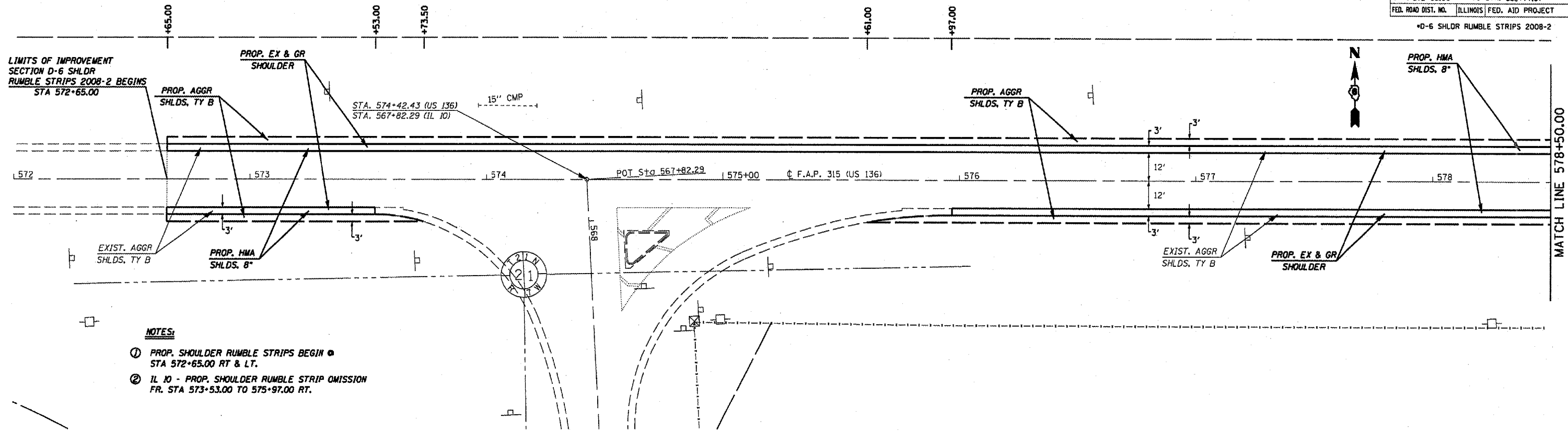
REVISIONS	
NAME	DATE

ILLINOIS DEPARTMENT OF TRANSPORTATION
TYPICAL SECTIONS
 F.A.P. Route 315 (US 136)
 Section D-6 SHLDR RUMBLE STRIPS 2008-2
 MASON COUNTY
 SCALE: VERT. _____
 HORIZ. _____
 DATE: MAY 15, 2007
 DRAWN BY: JWC
 CHECKED BY: RSC

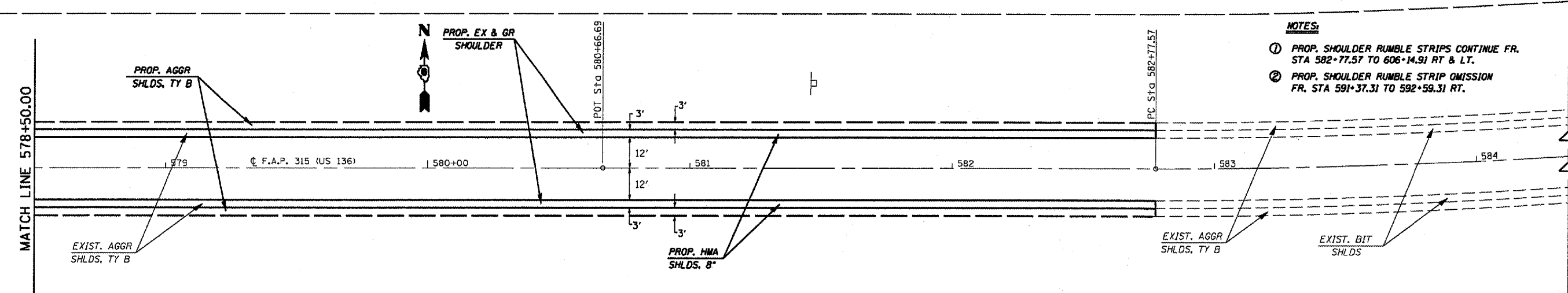
at:\projects\0610707\sh\typical.dgn
 Oct-10-2007 10:44:23AM
 *REF01

CONTRACT NO. 72B30

F.A.P. RTE.	SECTION	COUNTY	TOTAL SHEETS	SHEET NO.
315		MASON	11	7
STA. 572+65.00		TO STA. 582+77.57		
FED. ROAD DIST. NO.		ILLINOIS FED. AID PROJECT		
+D-6 SHLDR RUMBLE STRIPS 2008-2				



- NOTES:**
- ① PROP. SHOULDER RUMBLE STRIPS BEGIN @ STA 572+65.00 RT & LT.
 - ② IL 10 - PROP. SHOULDER RUMBLE STRIP OMISSION FR. STA 573+53.00 TO 575+97.00 RT.



- NOTES:**
- ① PROP. SHOULDER RUMBLE STRIPS CONTINUE FR. STA 582+77.57 TO 606+14.91 RT & LT.
 - ② PROP. SHOULDER RUMBLE STRIP OMISSION FR. STA 591+37.31 TO 592+59.31 RT.

REVISIONS	
NAME	DATE

ILLINOIS DEPARTMENT OF TRANSPORTATION

PLAN VIEW

F.A.P. Route 315 (US 136)
 Section D-6 SHLDR RUMBLE STRIPS 2008-2
 MASON COUNTY

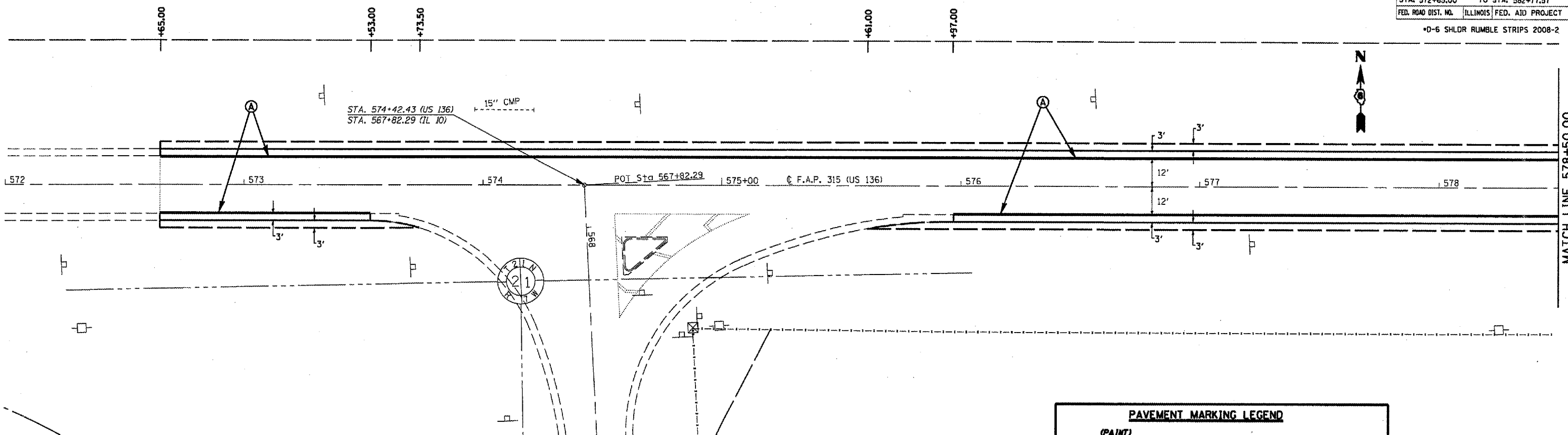
SCALE: VERT. _____
 HORIZ. _____
 DATE: MAY 21, 2007

DRAWN BY: JWC
 CHECKED BY: RSC

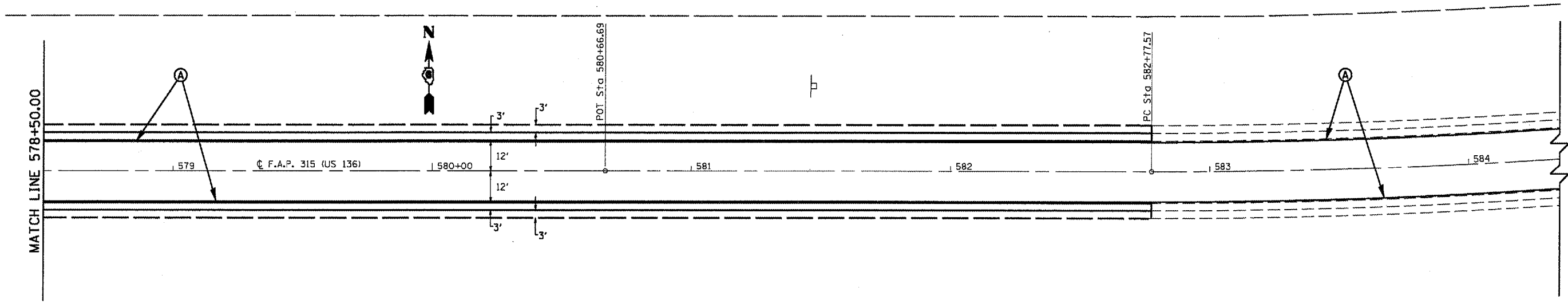
PLOT DATE = Oct-09-2007 16:57:43AM
 FILE NAME = s:\projects\72B30\72B30.dgn
 PLOT SCALE = 42.5625' / IN.
 USER NAME = jwc

CONTRACT NO. 72B30

F.A.P. RTE.	SECTION	COUNTY	TOTAL SHEETS	SHEET NO.
315	MASON	MASON	11	9
STA. 572+65.00 TO STA. 582+77.57				
FED. ROAD DIST. NO. ILLINOIS		FED. AID PROJECT		
*D-6 SHLDR RUMBLE STRIPS 2008-2				



PAVEMENT MARKING LEGEND	
(PAINT)	
(A)	PAVEMENT MARKING - LINE - 5" WHITE (SOLID)



REVISIONS	
NAME	DATE

ILLINOIS DEPARTMENT OF TRANSPORTATION

PAVEMENT MARKING DETAILS

F.A.P. Route 315 (US 136)
 Section D-6 SHLDR RUMBLE STRIPS 2008-2
 MASON COUNTY

SCALE: VERT. _____
 HORIZ. _____

DATE: MAY 21, 2007

DRAWN BY: JWC
 CHECKED BY: RSC

PLOT DATE = Oct-09-2007 10:56:47AM
 FILE NAME = c:\projects\618707\pvtmark.dgn
 PLOT SCALE = 42.3529' / IN.
 USER NAME = cady

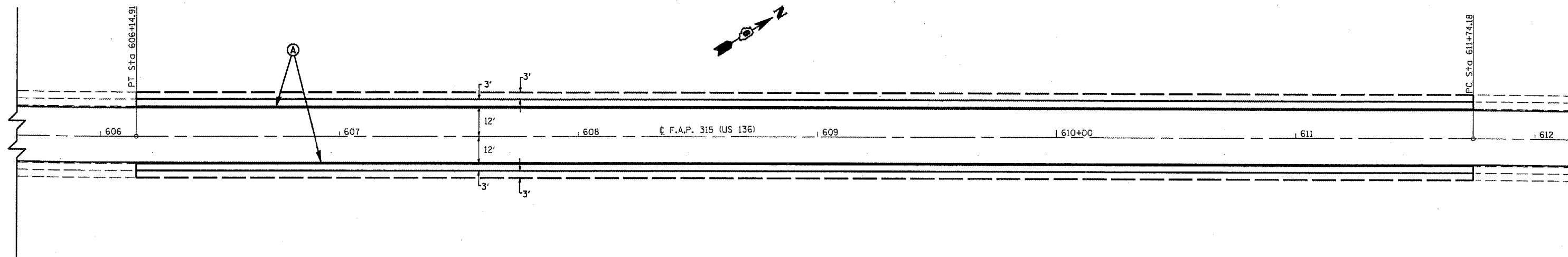
CONTRACT NO. 72B30

F.A.P. RTE.	SECTION	COUNTY	TOTAL SHEETS	SHEET NO.
315		MASON	11	10
STA. **		TO STA. **		
FED. ROAD DIST. NO.	ILLINOIS	FED. AID PROJECT		

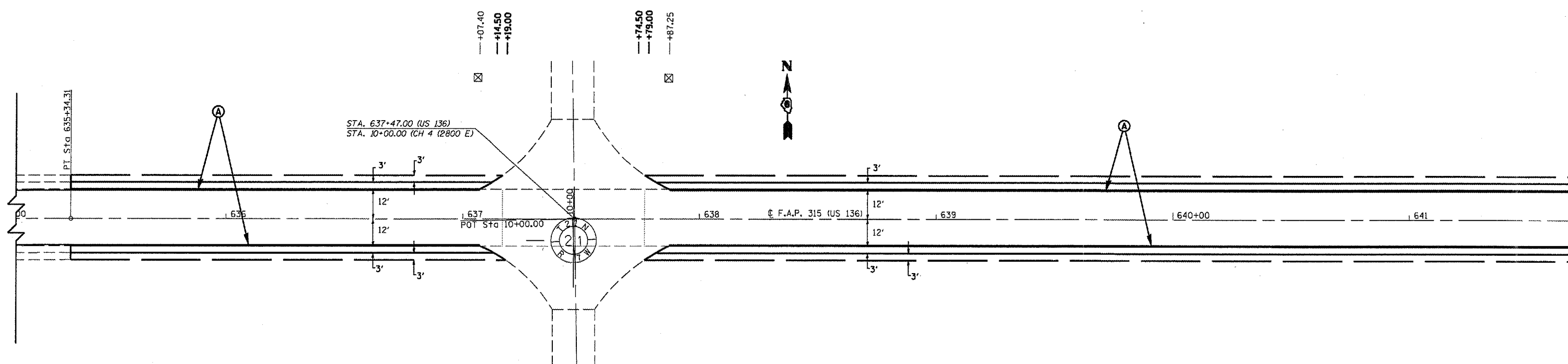
*D-6 SHLDR RUMBLE STRIPS 2008-2

**606+14.91 TO 611+74.18

**635+00.00 TO 641+68.50



PAVEMENT MARKING LEGEND	
(PAINT)	
(A)	PAVEMENT MARKING - LINE - 5" WHITE (SOLID)



REVISIONS	
NAME	DATE

ILLINOIS DEPARTMENT OF TRANSPORTATION

PAVEMENT MARKING DETAILS

F.A.P. Route 315 (US 136)
 Section D-6 SHLDR RUMBLE STRIPS 2008-2
 MASON COUNTY

SCALE: VERT. _____
 HORIZ. _____

DATE: MAY 21, 2007

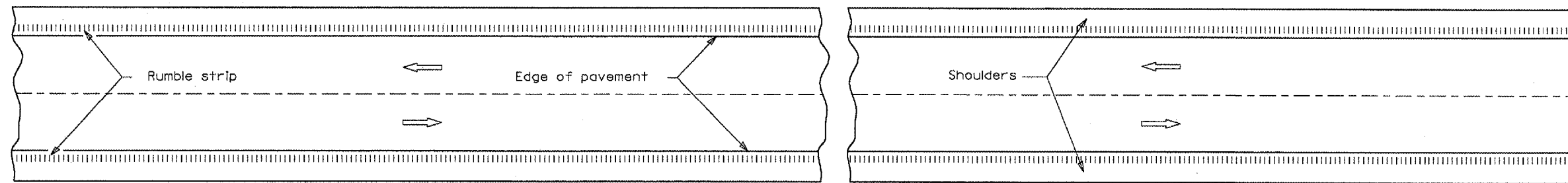
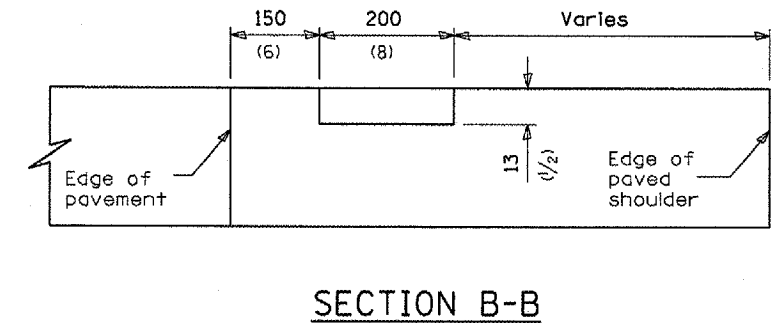
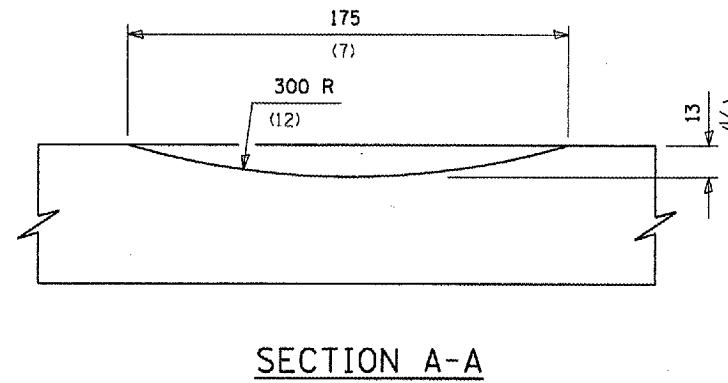
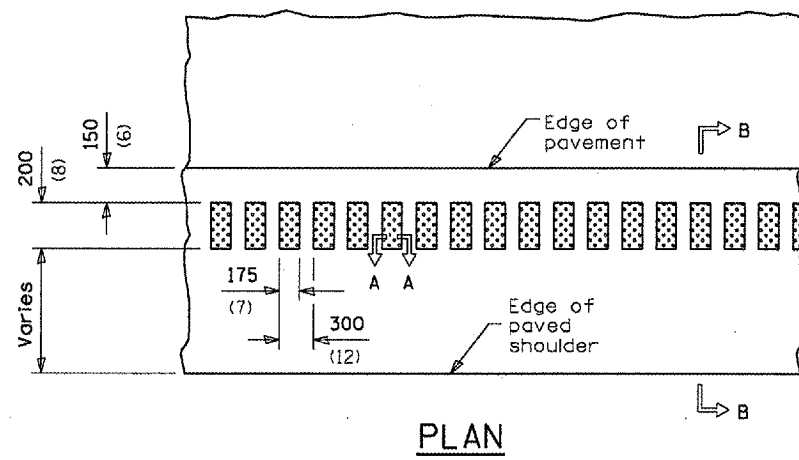
DRAWN BY: JWC
 CHECKED BY: RSC

PLOT DATE = 05-29-2007 10:00:56AM
 FILE NAME = s:\mason\72B30\pvtmark.dgn
 PLOT SCALE = 42.30293' / IN.
 USER NAME = jcw

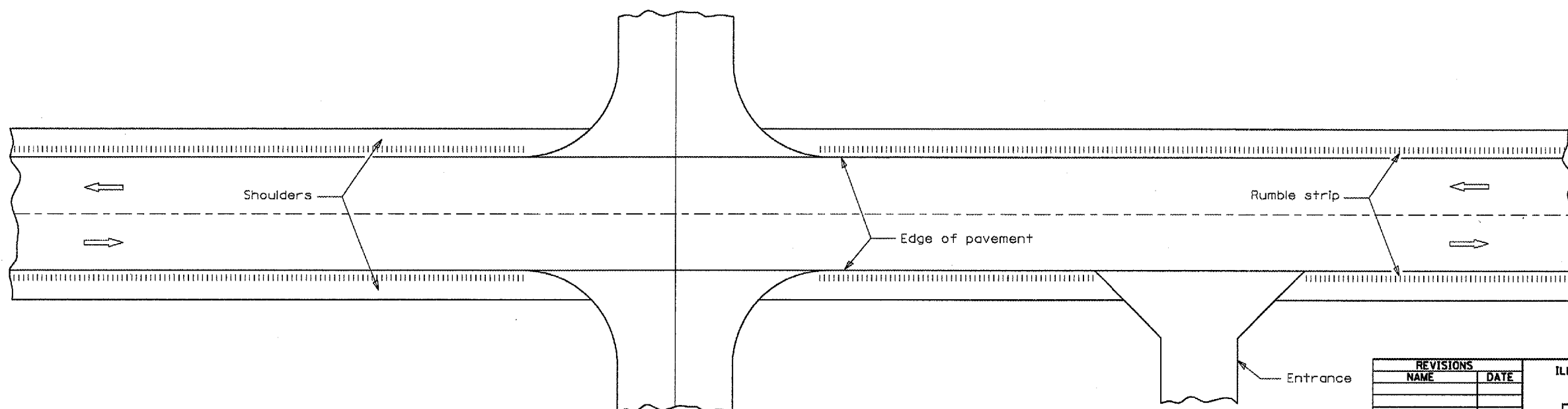
CONTRACT NO. 72B30

F.A.P. RTE.	SECTION	COUNTY	TOTAL SHEETS	SHEET NO.
315	*	ADAMS	11	11
STA. 572+65.00		TO STA. 641+68.50		
FED. ROAD DIST. NO.		ILLINOIS FED. AID PROJECT		

* D-6 SHLDR RUMBLE STRIPS 2008-2



HALF PLAN
TYPICAL APPLICATION FOR RURAL AREAS



HALF PLAN
TYPICAL APPLICATION AT SIDEROADS AND ENTRANCES

REVISIONS	
NAME	DATE

ILLINOIS DEPARTMENT OF TRANSPORTATION

RUMBLE STRIPS
DETAIL

SCALE: VERT.
HORIZ.
DATE: JUNE 8, 2007

DRAWN BY: JWC
CHECKED BY: RSC

PLOT DATE = Oct-09-2007 11:12:04AM
FILE NAME = s:\projects\ad10707\shdetail.dgn
PLOT SCALE = 42.3529' / IN.
USER NAME = jwc