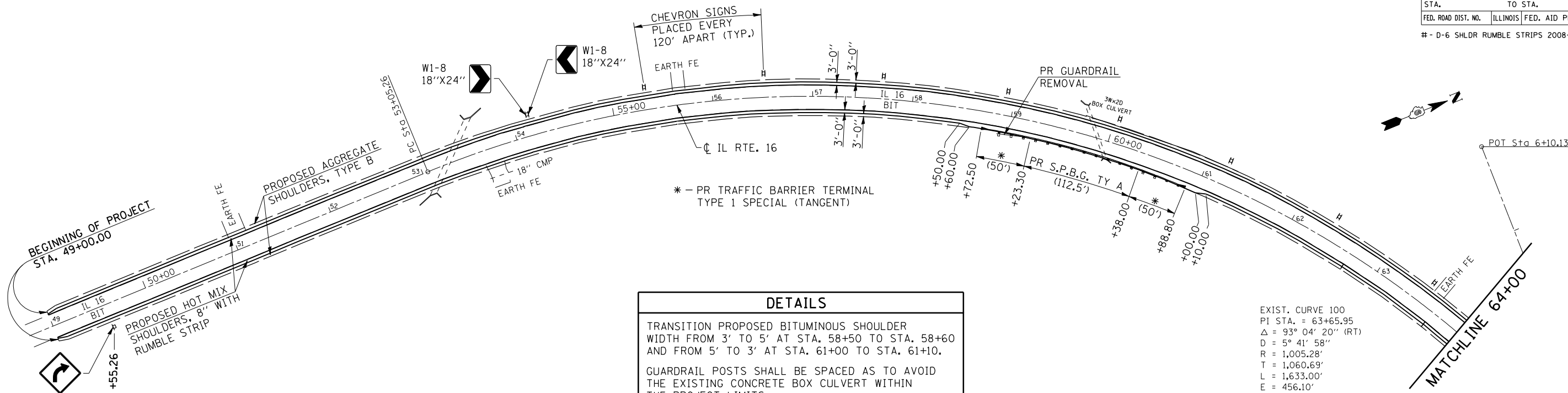


FAP RTE.	SECTION	COUNTY	TOTAL SHEETS	SHEET NO.
325	#	MACOUPIN	6	5
STA.		TO STA.		
FED. ROAD DIST. NO.	ILLINOIS	FED. AID PROJECT		

- D-6 SHLDR RUMBLE STRIPS 2008-03



DETAILS

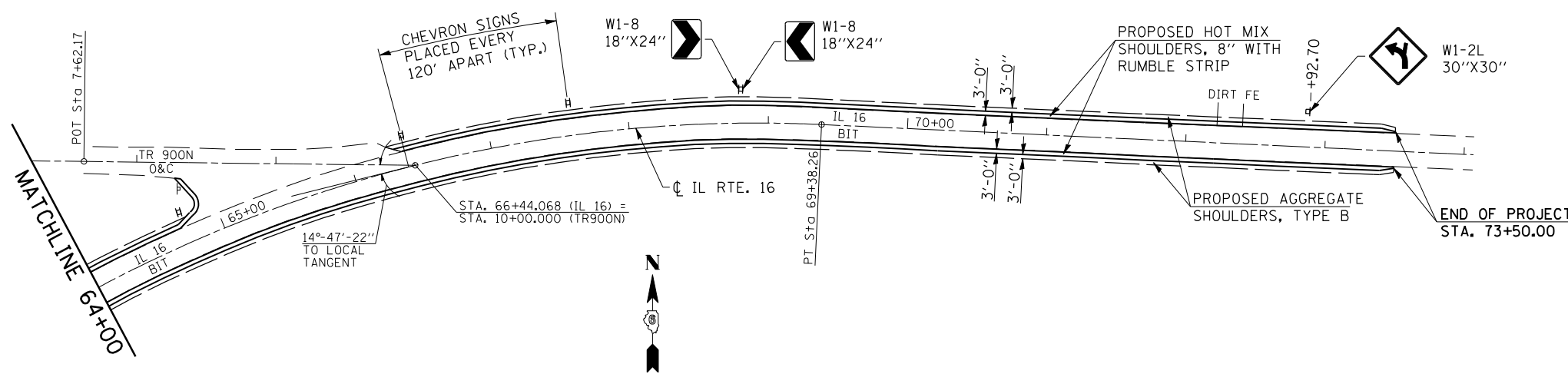
TRANSITION PROPOSED BITUMINOUS SHOULDER WIDTH FROM 3' TO 5' AT STA. 58+50 TO STA. 58+60 AND FROM 5' TO 3' AT STA. 61+00 TO STA. 61+10.

GUARDRAIL POSTS SHALL BE SPACED AS TO AVOID THE EXISTING CONCRETE BOX CULVERT WITHIN THE PROJECT LIMITS.

PROPOSED CHEVRON SIGN PANELS AND SIGN POSTS ALONG THE OUTSIDE OF THE CURVE AT STATIONS: 54+16, 55+36, 56+56, 57+76, 58+96, 60+16, 61+36, 62+56, 63+76, 64+75, 66+40, 67+60, 68+80
TOTAL = 78 SQ FT (26 SIGN PANELS @ 18"X24")

PROPOSED CURVE SIGN PANELS AT STATIONS: 49+52.26 RT. AND 72+92.70 LT.
TOTAL = 12.5 SQ FT (2 SIGN PANELS @ 30"X30")

EXIST. CURVE 100
 PI STA. = 63+65.95
 $\Delta = 93^\circ 04' 20''$ (RT)
 $D = 5^\circ 41' 58''$
 $R = 1,005.28'$
 $T = 1,060.69'$
 $L = 1,633.00'$
 $E = 456.10'$
 $e = \text{----}$
 $T.R. = \text{----}$
 $S.E. \text{ RUN} = \text{----}$
 $P.C. \text{ STA.} = 53+05.26$
 $P.T. \text{ STA.} = 69+38.26$



ILLINOIS DEPARTMENT OF TRANSPORTATION
PROPOSED PROJECT LAYOUT
 FAP 325 (IL RTE. 16)
 SECTION D-6 SHLDR RUMBLE STRIPS 2008-03
 MACOUPIN COUNTY

DATE SEPT. 19, 2007 DRAWN BY RTS

PLOT DATE = 08-19-2007 08:27:46PM
 FILE NAME = c:\p\projects\6181987\shldr\shldr.dwg
 PLOT SCALE = 1/8"=1'-0" / IN.
 USER NAME = laughlin-1