

| | | | | |
|---------------------|----------|------------------|--------------|-----------|
| FAP RTE. | SECTION | COUNTY | TOTAL SHEETS | SHEET NO. |
| 325 | # | MACOUPIN | 6 | 6 |
| STA. | | TO STA. | | |
| FED. ROAD DIST. NO. | ILLINOIS | FED. AID PROJECT | | |

- D-6 SHLDR RUMBLE STRIPS 2008-03

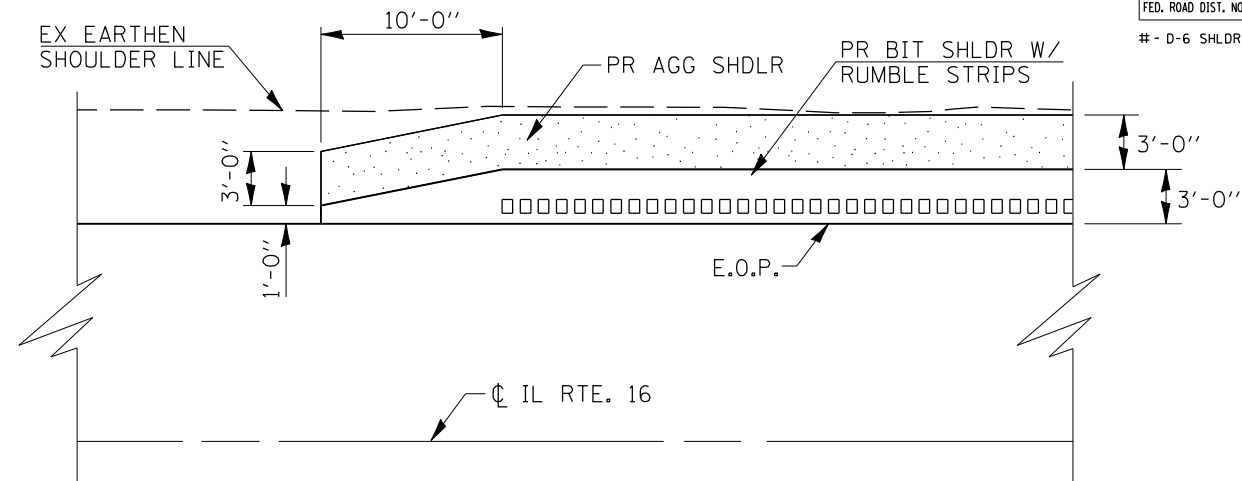
| HOT MIX ASPHALT SHOULDERS, 8" SCHEDULE | | |
|--|----------------|------------------|
| STATION RANGE | SHOULDER WIDTH | QUANTITY (SQ YD) |
| 49+00.00 TO 64+90.00 LT. | 3'-0" | 537.0 |
| 66+31.50 TO 73+50.00 LT. | 3'-0" | 239.5 |
| 49+00.00 TO 58+50.00 RT. | 3'-0" | 316.7 |
| 58+50.00 TO 61+10.00 RT. | 5'-0" | 144.5 |
| 61+10.00 TO 73+50.00 RT. | 3'-0" | 413.4 |
| TOTAL = | | 1651.1 SQ YD |

| AGGREGATE SHOULDERS, TYPE B (3" AVG. DEPTH) SCHEDULE | | | |
|--|----------------|------------------|----------------|
| STATION RANGE | SHOULDER WIDTH | QUANTITY (SQ YD) | QUANTITY (TON) |
| 49+00.00 TO 64+78.00 LT. | 3'-0" | 526.0 | 89.9 |
| 66+31.50 TO 73+50.00 LT. | 3'-0" | 239.5 | 40.9 |
| 49+00.00 TO 58+50.00 RT. | 3'-0" | 316.7 | 54.1 |
| 61+00.00 TO 73+50.00 RT. | 3'-0" | 416.7 | 71.2 |
| TOTAL = | | 256.1 TONS | |

| PAINT PAVEMENT MARKING - LINE 5" SCHEDULE | | |
|---|------------------------------|-----------------|
| STATION RANGE | DESCRIPTION | QUANTITY (FOOT) |
| 49+00.00 TO 64+78.00 | LEFT EDGE LINE - WHITE | 1578.0 |
| 66+31.50 TO 73+50.00 | LEFT EDGE LINE - WHITE | 718.5 |
| 49+00.00 TO 73+50.00 | RIGHT EDGE LINE - WHITE | 2450.0 |
| 49+00.00 TO 73+50.00 | 30' SKIP / 10' DASH - YELLOW | 612.5 |
| TOTAL = | | 5359.0 FOOT |

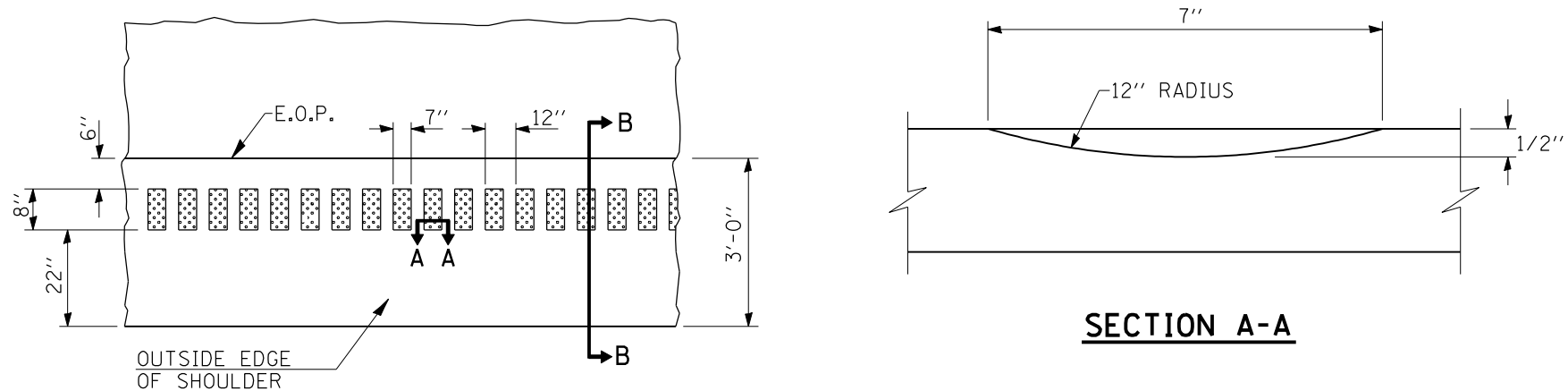
| STEEL PLATE BEAM GUARDRAIL, TYPE A | |
|------------------------------------|-----------------|
| STATION RANGE | QUANTITY (FOOT) |
| 59+23.30 RT. TO 60+38.00 RT. | 112.5 |
| TOTAL = 112.5 FOOT | |

| GUARDRAIL REMOVAL | |
|------------------------------|-----------------|
| STATION RANGE | QUANTITY (FOOT) |
| 58+88.62 RT. TO 60+57.15 RT. | 168.53 |
| TOTAL = 168.53 FOOT | |



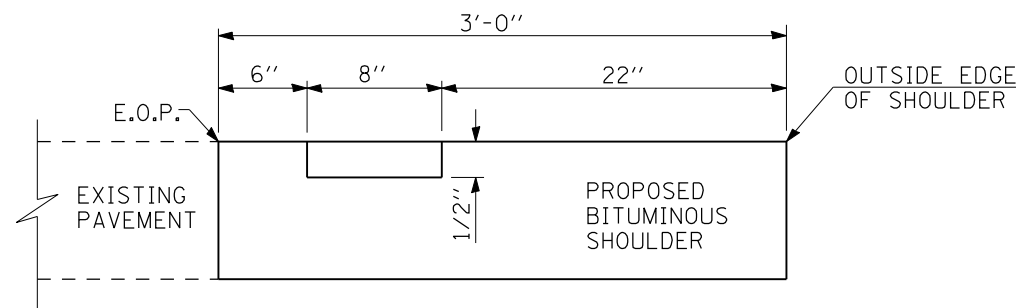
TAPER DETAIL FOR PROPOSED AGGREGATE & BITUMINOUS SHOULDERS

(TRANSITION WIDTH FOR PROPOSED BITUMINOUS SHOULDERS FROM 1'-0" TO 3'-0" WITHIN 10'-0")



PLAN VIEW

SECTION A-A



SECTION B-B

ILLINOIS DEPARTMENT OF TRANSPORTATION
SCHEDULES AND SHOULDER & RUMBLE STRIP DETAILS
 FAP 325 (IL RTE. 16)
 SECTION D-6 SHLDR RUMBLE STRIPS 2008-03
 MACOUPIN COUNTY