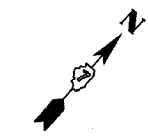


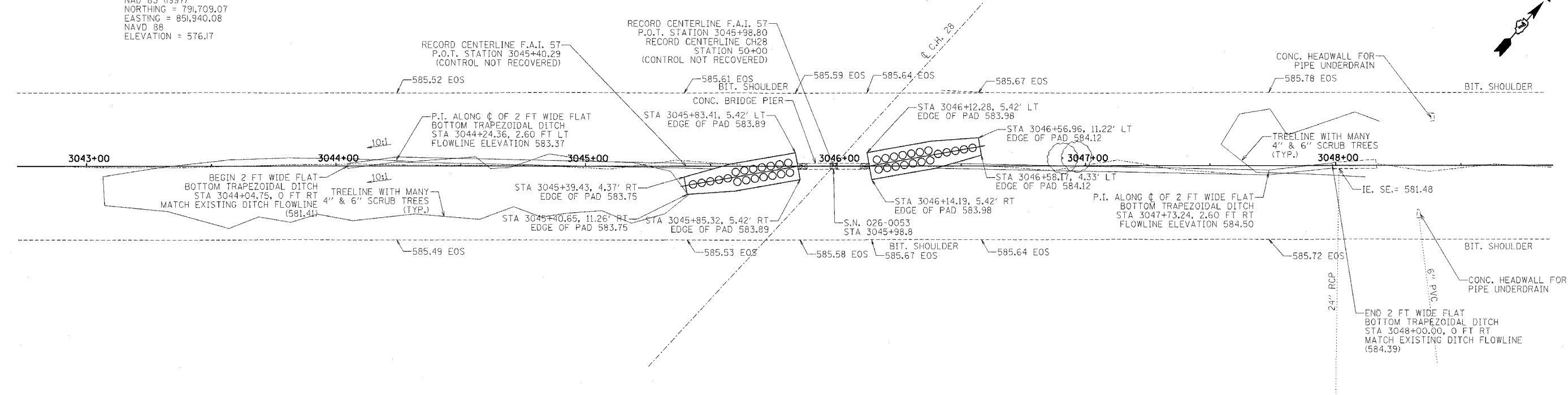
F.A.I. RTE.	SECTION	COUNTY	TOTAL SHEETS	SHEET NO.
57	*	**	86	75

STA. 3043+00 TO STA. 3048+00
 FED. ROAD DIST. NO. ILLINOIS FED. AID PROJECT

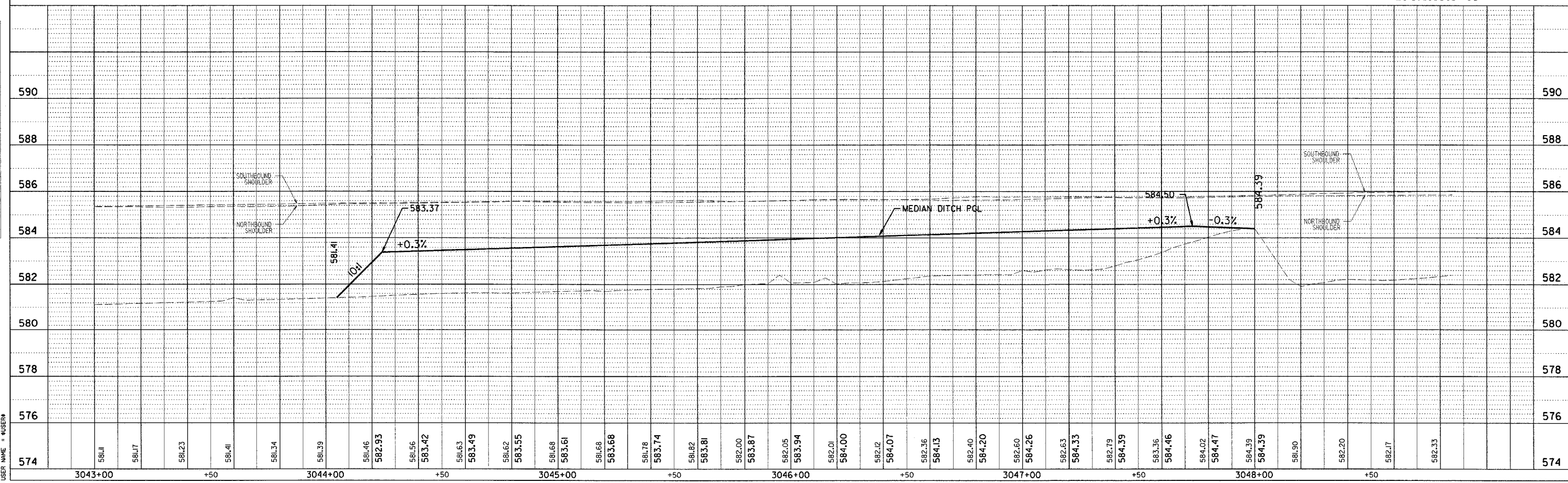
- * D7 SAFETY 2008-1
- ** EFFINGHAM, CLAY, AND FAYETTE



GPS BASE STATION OCCUPYING PROJECT TRAVERSE STATION # 1
 NGS STATION DESIGNATION - FARINA
 PID - JB0718
 NAD 83 (1997)
 NORTHING = 791,709.07
 EASTING = 851,940.08
 NAVD 88
 ELEVATION = 576.17



LOCATION 10



DATE	BY

PLAN
 NO.

DATE	BY

PROFILE
 NO.

PLOT DATE = DATE
 FILE NAME = FILE
 PLOT SCALE = SCALE
 USER NAME = USER