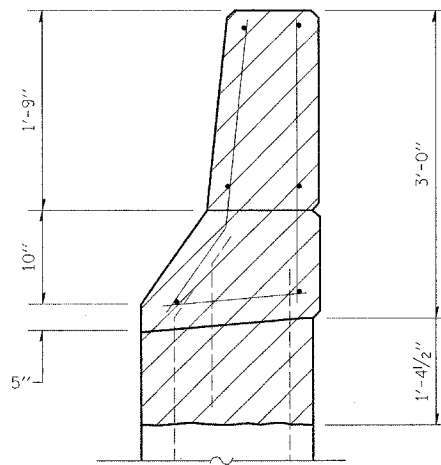
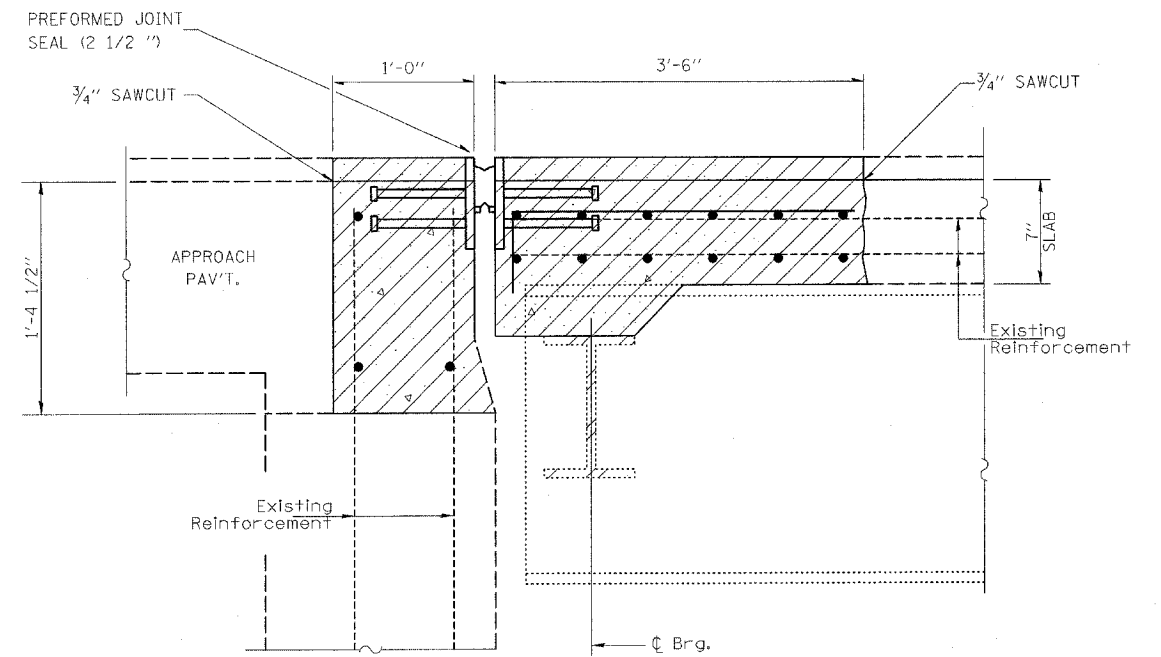


TYPICAL CONCRETE REPLACEMENT AT EACH ABUTMENT

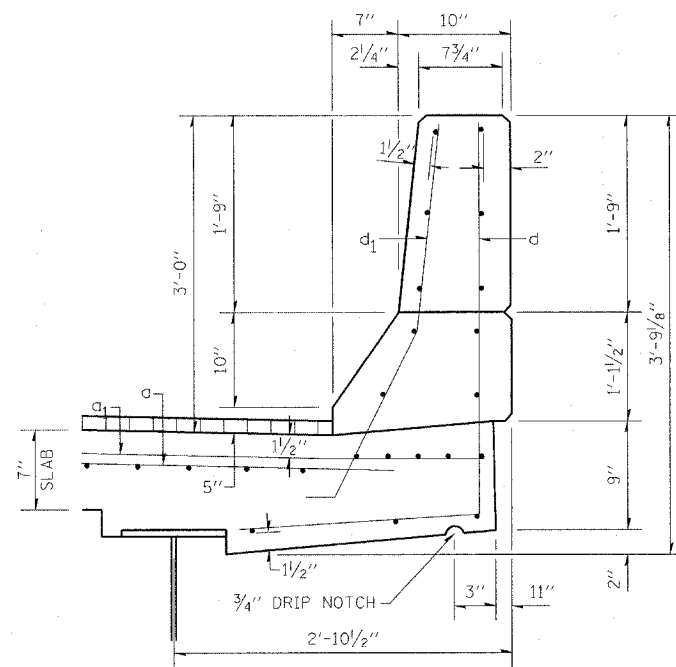
CONCRETE REMOVAL (LIMITS ARE FROM OUT TO OUT OF DECK)



WINGWALL DETAIL

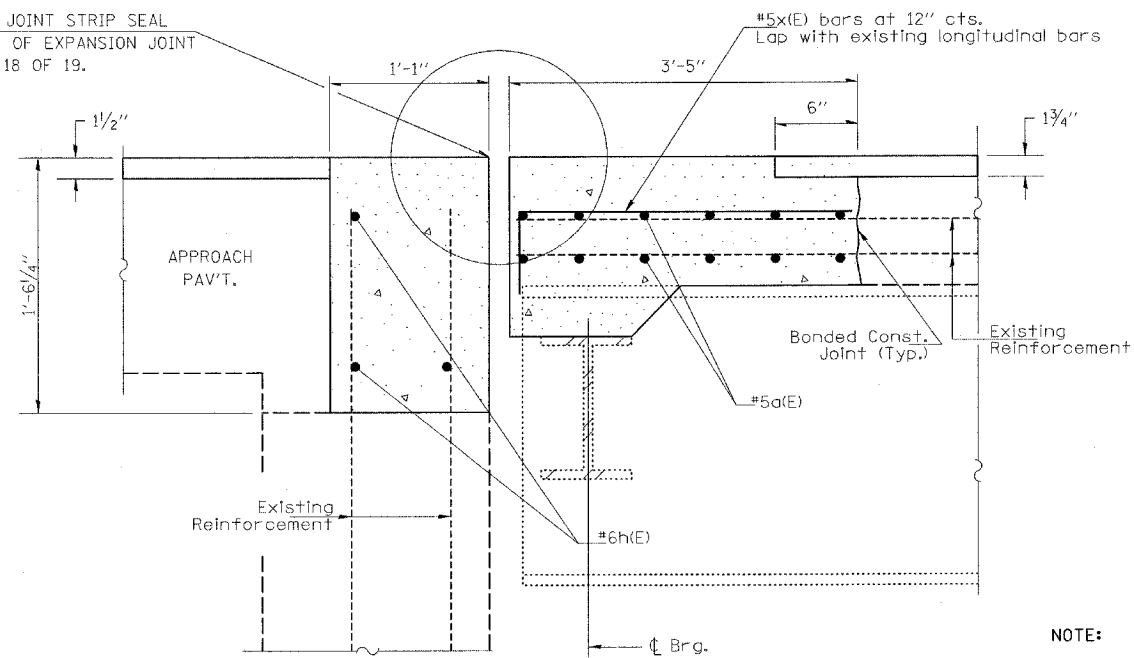


EXISTING EXPANSION JOINTS AT ABUTMENTS



PARAPET DETAIL

PREFORMED JOINT STRIP SEAL FOR DETAIL OF EXPANSION JOINT SEE SHEET 18 OF 19.



PROPOSED EXPANSION JOINTS AT ABUTMENTS

POLYMERIZED HOT-MIX ASPHALT SURFACE COURSE, MIXTURE "D", N90

NOTE: EXISTING REINFORCEMENT BARS ARE TO BE CLEANED, STRAIGHTENED AND INCORPORATED INTO THE NEW CONSTRUCTION. ANY REINFORCEMENT BARS THAT ARE DAMAGED DURING CONCRETE REMOVAL OPERATIONS SHALL BE REPAIRED OR REPLACED USING AN APPROVED BAR SPLICER OR ANCHORAGE SYSTEM (COST INCLUDED IN CONCRETE REMOVAL).

FILE NAME =	USER NAME = #USER#	DESIGNED -	REVISED -
#FILE#		DRAWN -	REVISED -
	PLOT SCALE = #SCALE#	CHECKED -	REVISED -
	PLOT DATE = #DATE#	DATE -	REVISED -

STATE OF ILLINOIS
DEPARTMENT OF TRANSPORTATION

EXPANSION JOINT & REBAR DETAILS

SCALE: SHEET NO. OF SHEETS STA. TO STA.

F.A.P. RTE.	SECTION	COUNTY	TOTAL SHEETS	SHEET NO.
752		FAYETTE	10	10
FED. ROAD DIST. NO. ILLINOIS FED. AID PROJECT			CONTRACT NO. 74276	