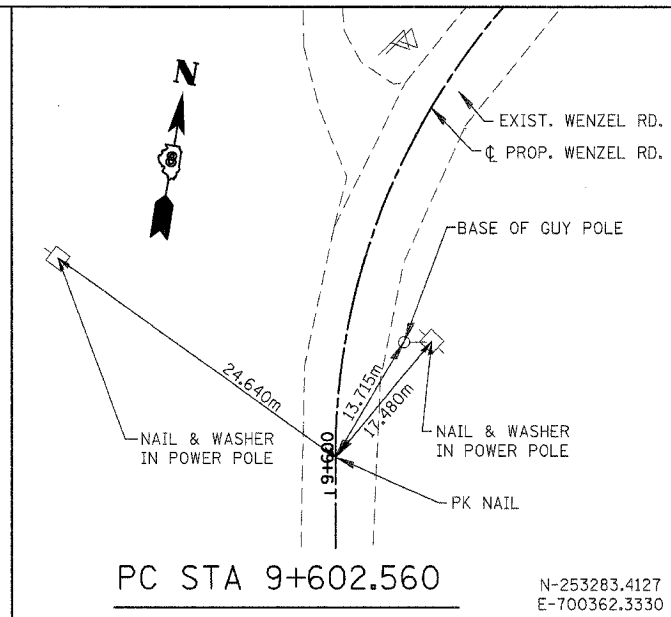
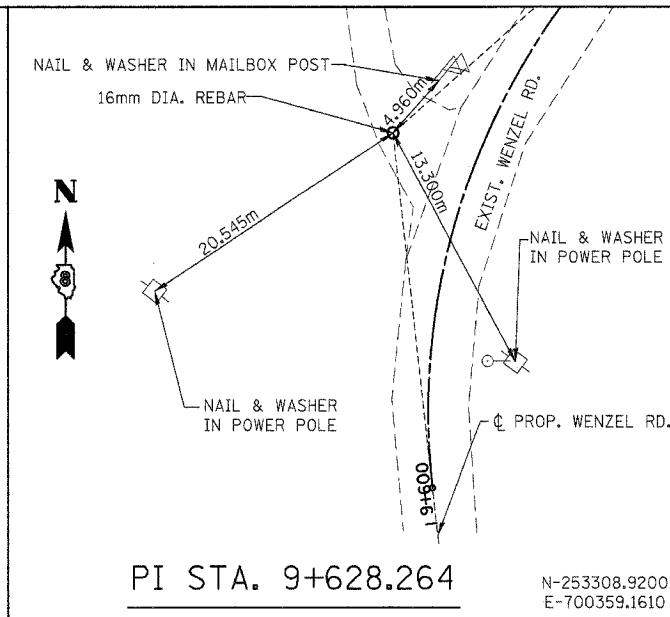


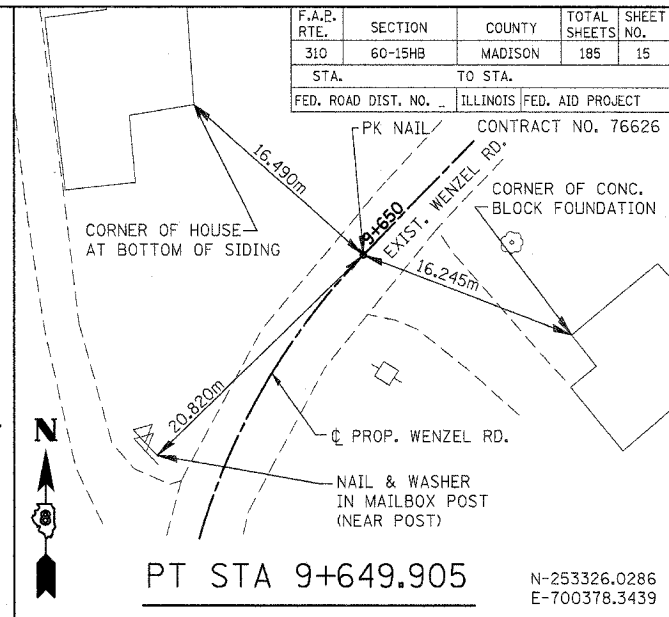
POT STA 9+572.019
 N-253253.1050
 E-700366.1020



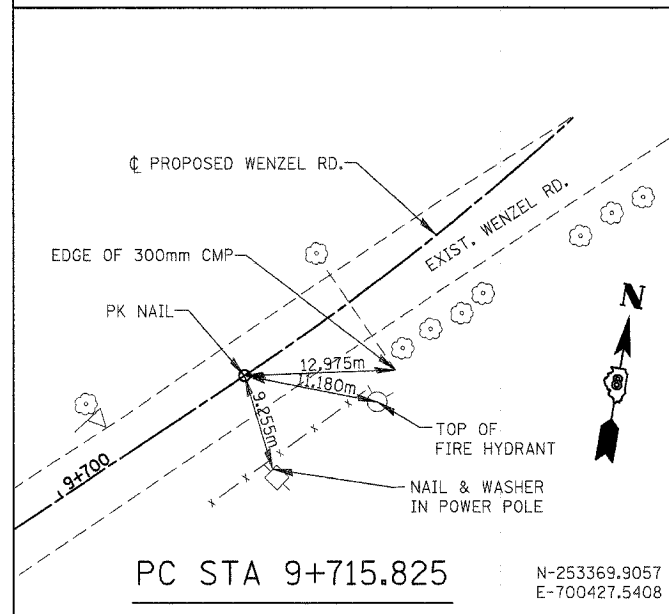
PC STA 9+602.560
 N-253283.4127
 E-700362.3330



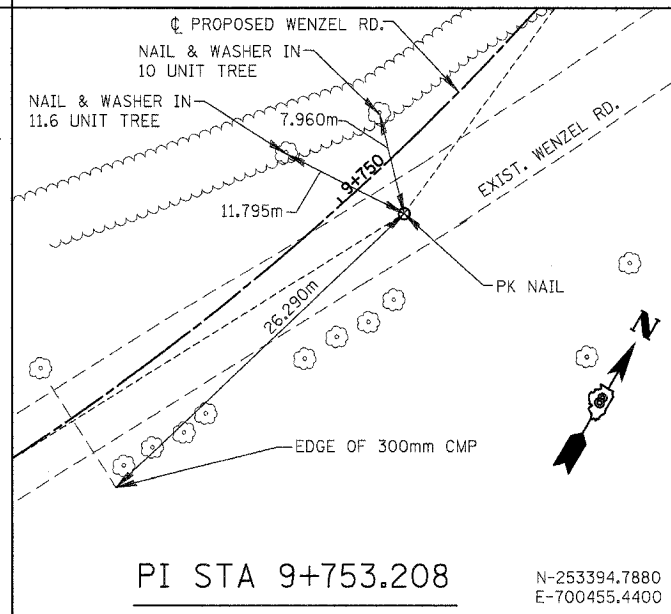
PI STA. 9+628.264
 N-253308.9200
 E-700359.1610



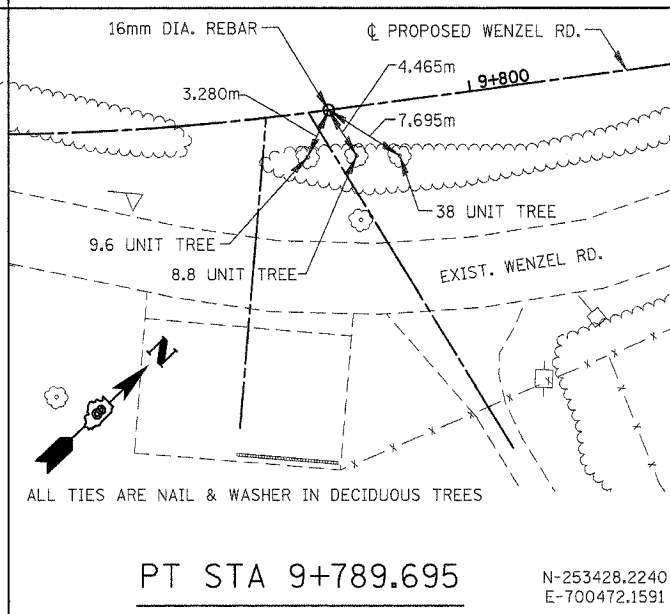
PT STA 9+649.905
 N-253326.0286
 E-700378.3439



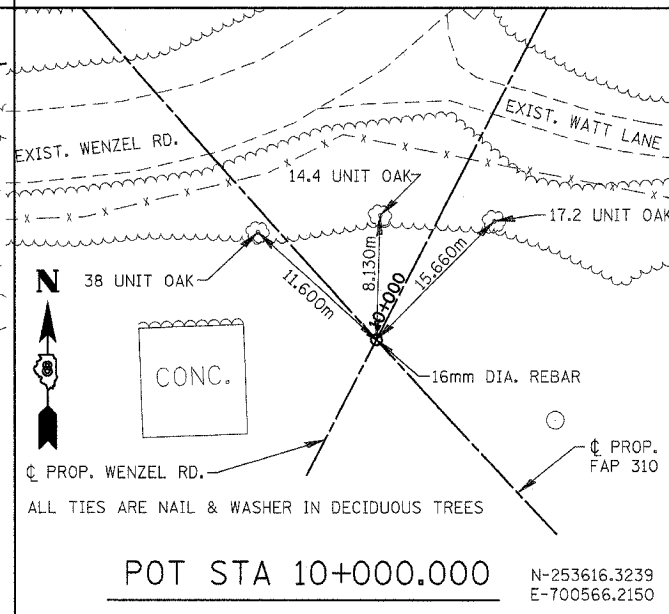
PC STA 9+715.825
 N-253369.9057
 E-700427.5408



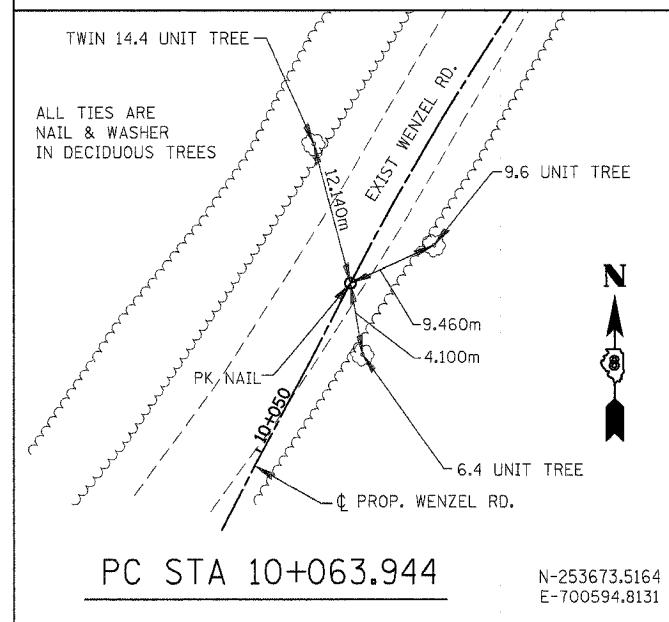
PI STA 9+753.208
 N-253394.7880
 E-700455.4400



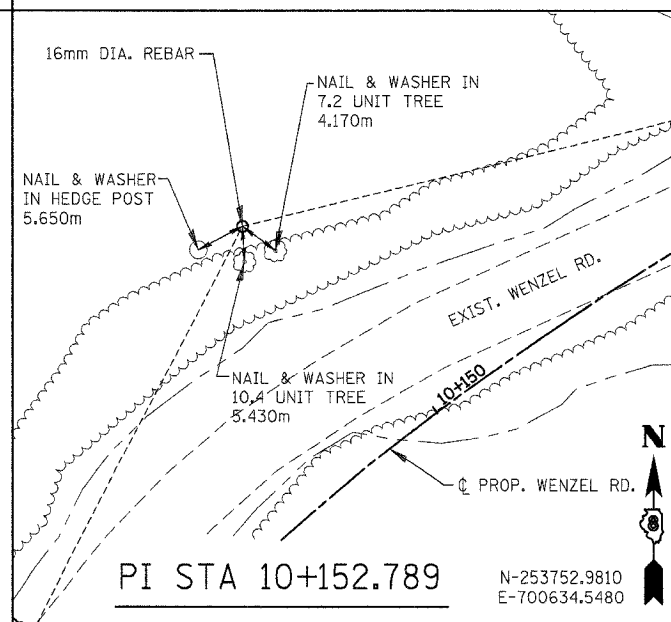
PT STA 9+789.695
 N-253428.2240
 E-700472.1591



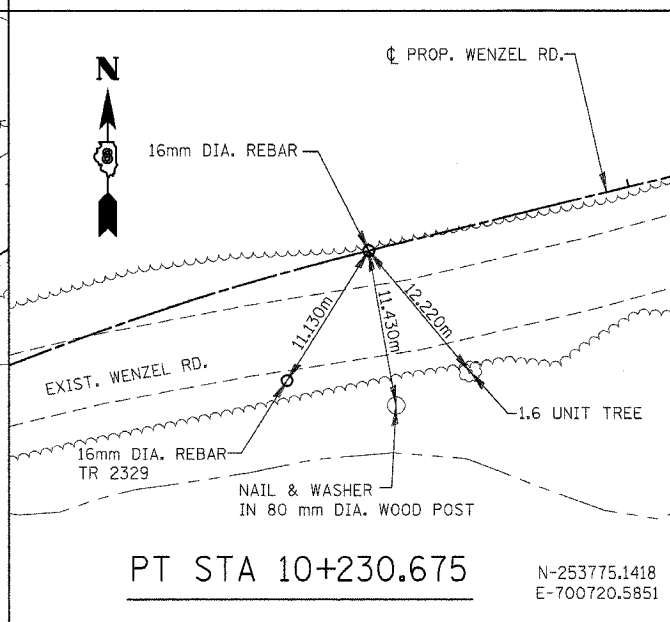
POT STA 10+000.000
 N-253616.3239
 E-700566.2150



PC STA 10+063.944
 N-253673.5164
 E-700594.8131



PI STA 10+152.789
 N-253752.9810
 E-700634.5480



PT STA 10+230.675
 N-253775.1418
 E-700720.5851

NOTES:
 TIES MAY BE LOCATED AT TREES, CULVERTS, FENCE POSTS, AND OTHER ITEMS SCHEDULED FOR REMOVAL.
 ALL TIES REFERENCED FROM NAD83(1986).
 ALL TIE DISTANCES ARE DIRECT UNLESS OTHERWISE NOTED.

REVISIONS	
NAME	DATE

ILLINOIS DEPARTMENT OF TRANSPORTATION
 HORIZONTAL ALIGNMENT & LOCAL TIES
 WENZEL ROAD
 MADISON COUNTY

SCALE: NONE
 DATE: 04/2005
 DRAWN BY: JH
 CHECKED BY: FML