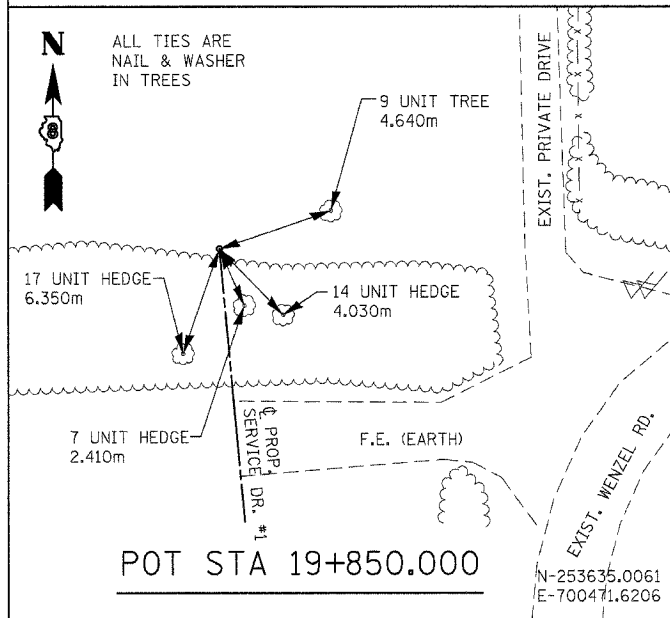


F.A.E. RTE.	SECTION	COUNTY	TOTAL SHEETS	SHEET NO.
310	60-15HB	MADISON	185	17
STA.		TO STA.		
FED. ROAD DIST. NO.		ILLINOIS FED. AID PROJECT		
CONTRACT NO. 76626				

ALL TIES ARE NAIL & WASHER IN TREES



NOTES:

TIES MAY BE LOCATED AT TREES, CULVERTS, FENCE POSTS, AND OTHER ITEMS SCHEDULED FOR REMOVAL.

ALL TIES REFERENCED FROM NAD83(1986).

ALL TIE DISTANCES ARE DIRECT UNLESS OTHERWISE NOTED.

REVISIONS	
NAME	DATE

ILLINOIS DEPARTMENT OF TRANSPORTATION
HORIZONTAL ALIGNMENT & LOCAL TIES
SERVICE DRIVE #1
MADISON COUNTY

SCALE: NONE
DATE: 04/2005

DRAWN BY: JH
CHECKED BY: FML