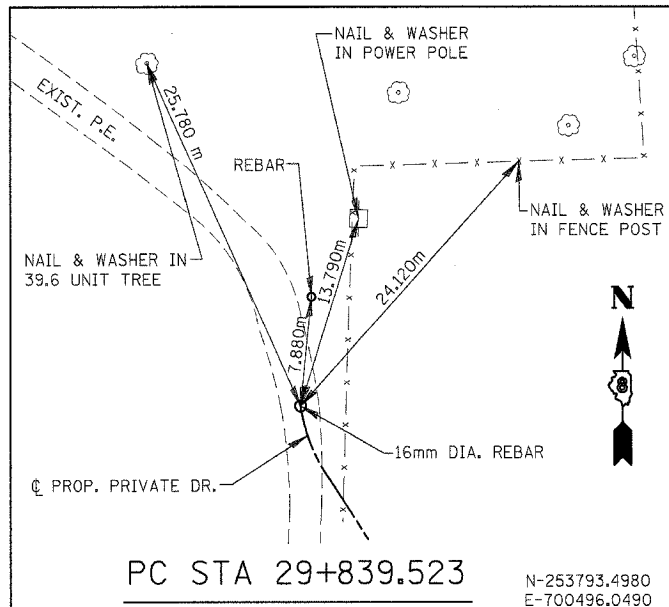


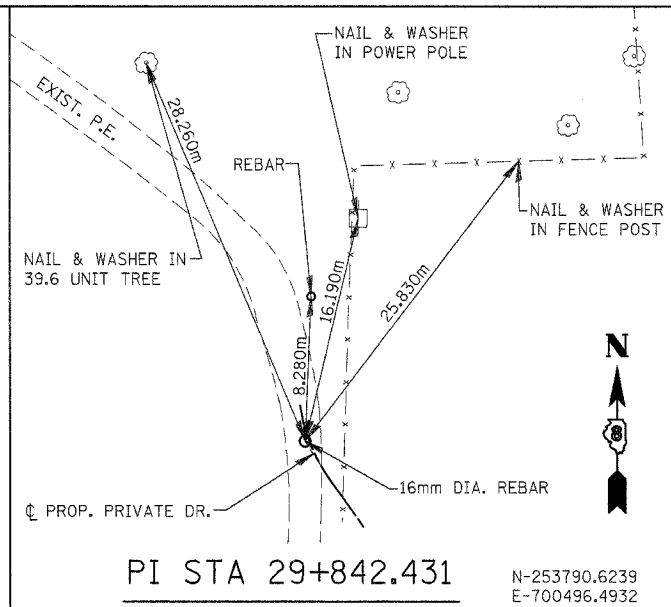
F.A.E. RTE.	SECTION	COUNTY	TOTAL SHEETS	SHEET NO.
310	60-15HB	MADISON	185	18
STA.	TO STA.			
FED. ROAD DIST. NO.	ILLINOIS	FED. AID PROJECT		

CONTRACT NO. 76626

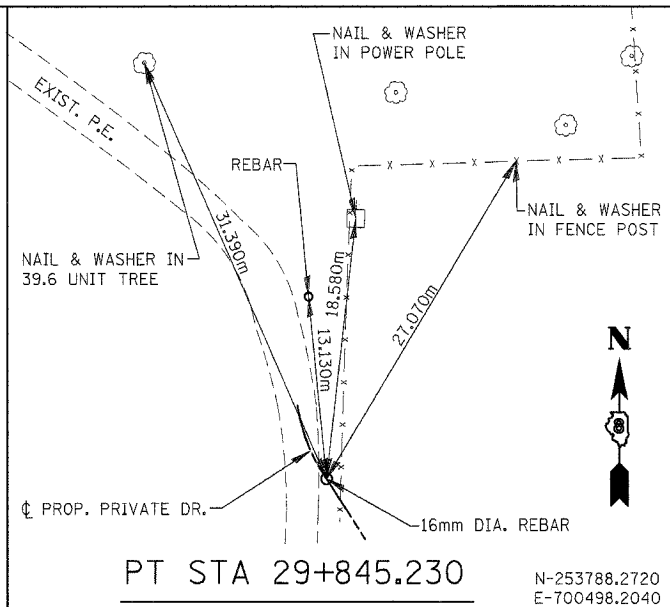
ALL TIES ARE NAIL & WASHER IN TREES



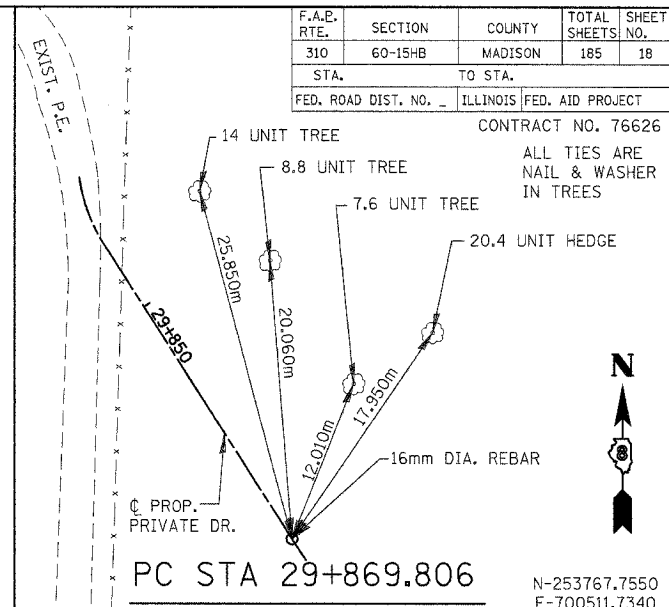
PC STA 29+839.523
N-253793.4980
E-700496.0490



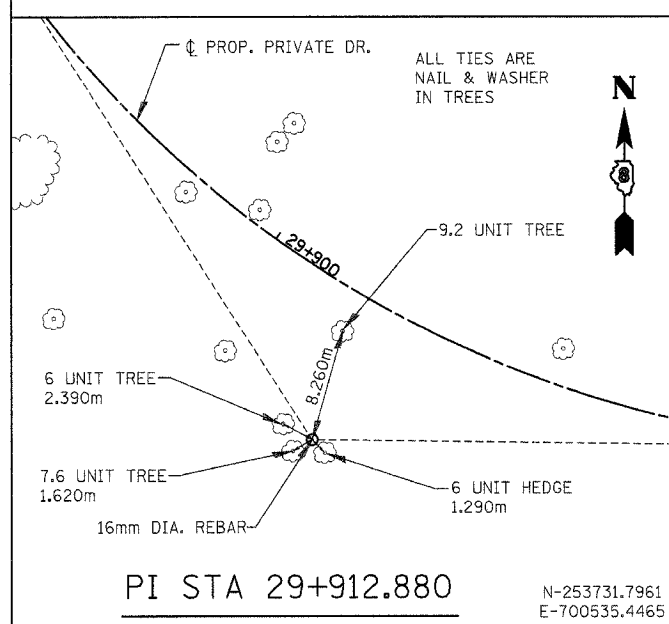
PI STA 29+842.431
N-253790.6239
E-700496.4932



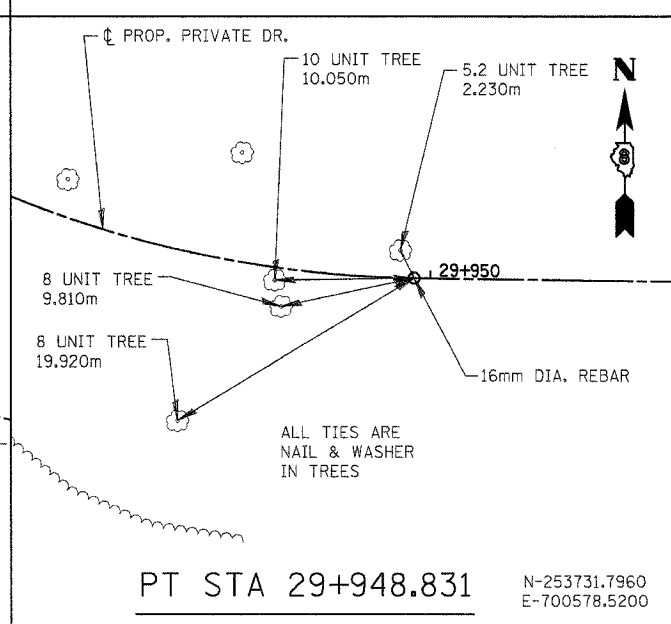
PT STA 29+845.230
N-253788.2720
E-700498.2040



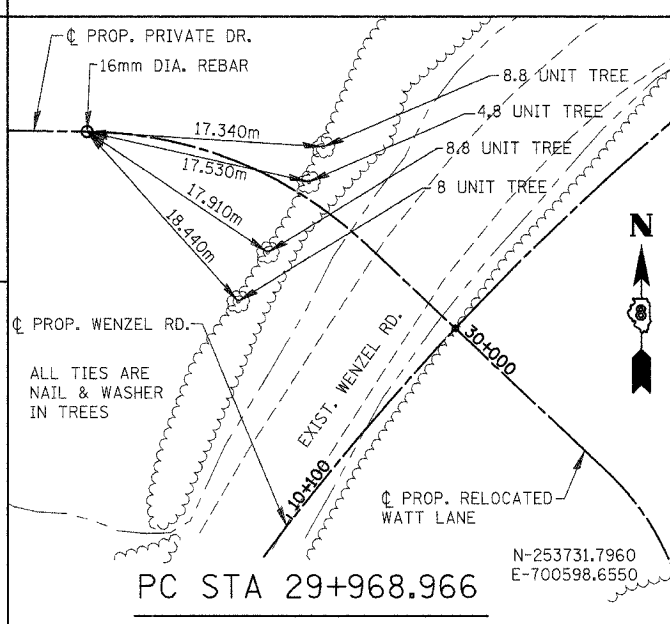
PC STA 29+869.806
N-253767.7550
E-700511.7340



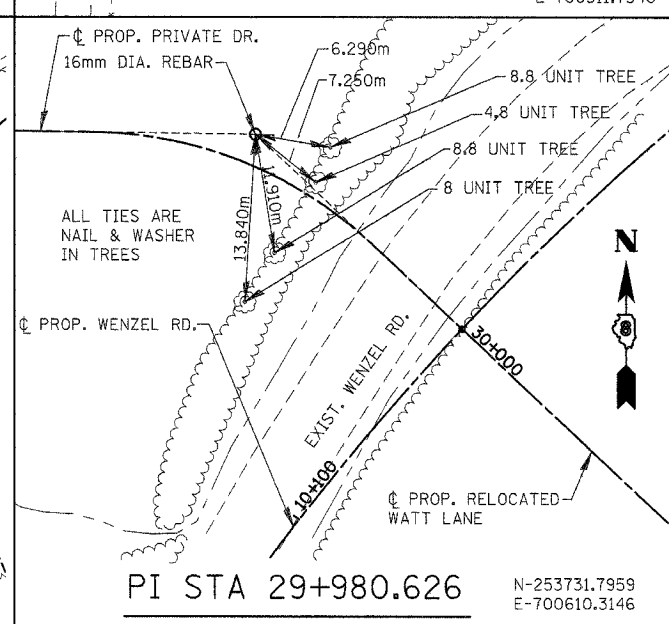
PI STA 29+912.880
N-253731.7961
E-700535.4465



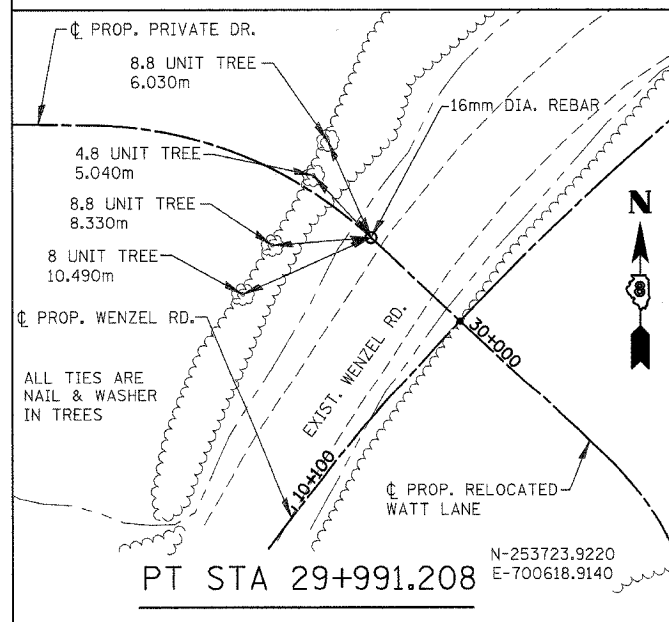
PT STA 29+948.831
N-253731.7960
E-700578.5200



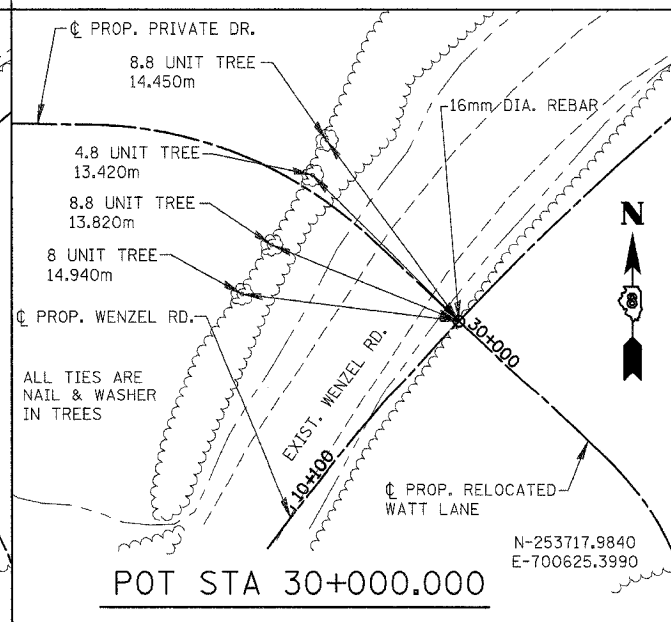
PC STA 29+968.966
N-253731.7960
E-700598.6550



PI STA 29+980.626
N-253731.7959
E-700610.3146



PT STA 29+991.208
N-253723.9220
E-700618.9140



POT STA 30+000.000
N-253717.9840
E-700625.3990

NOTES:
TIES MAY BE LOCATED AT TREES, CULVERTS, FENCE POSTS, AND OTHER ITEMS SCHEDULED FOR REMOVAL.
ALL TIES REFERENCED FROM NAD83(1986).
ALL TIE DISTANCES ARE DIRECT UNLESS OTHERWISE NOTED.

REVISIONS	
NAME	DATE

ILLINOIS DEPARTMENT OF TRANSPORTATION
HORIZONTAL ALIGNMENT & LOCAL TIES
PRIVATE DRIVE
MADISON COUNTY
SCALE: NONE
DATE: 04/2005
DRAWN BY: JH
CHECKED BY: FML

HORIZONTAL ALIGNMENT & LOCAL TIES - PRIVATE DRIVE