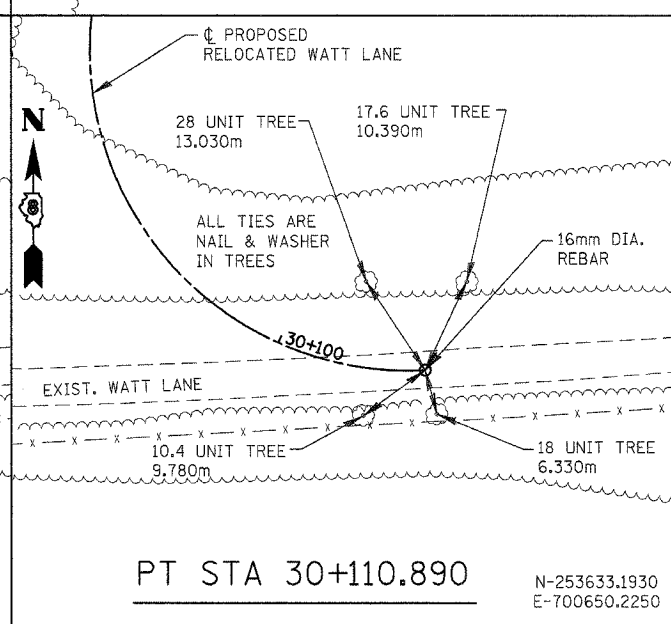
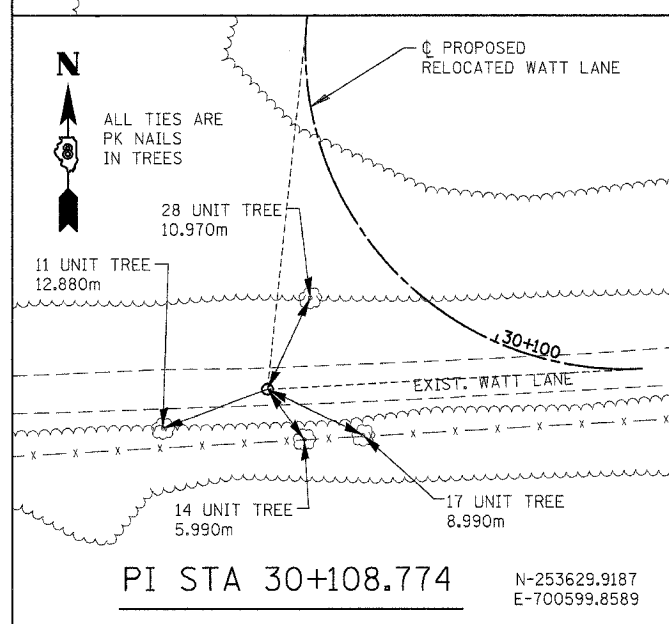
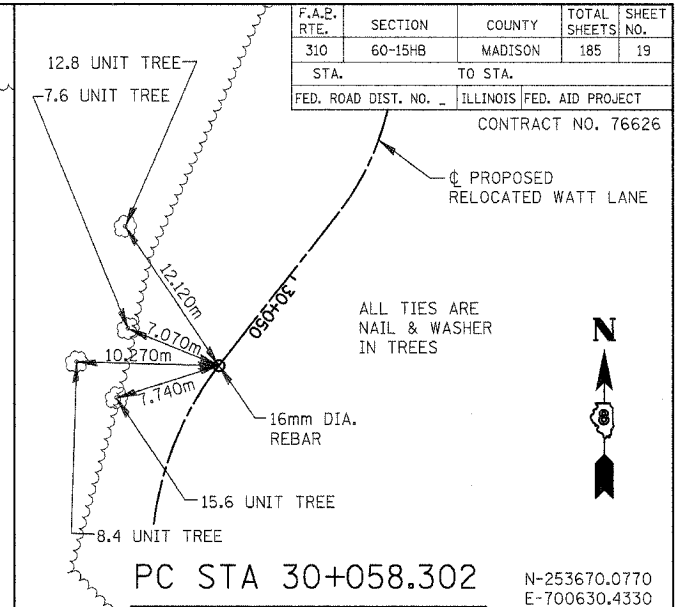
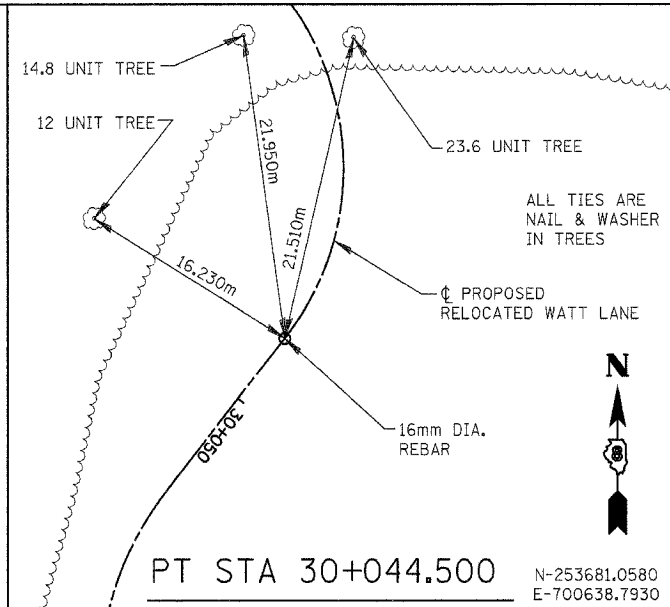
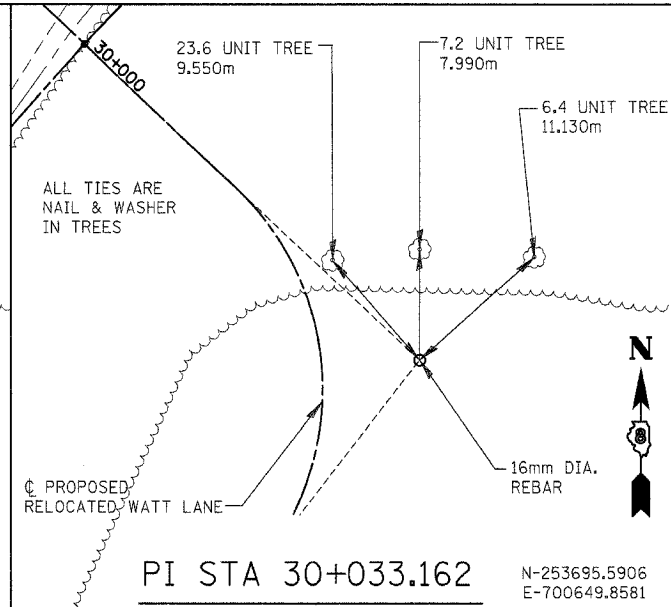
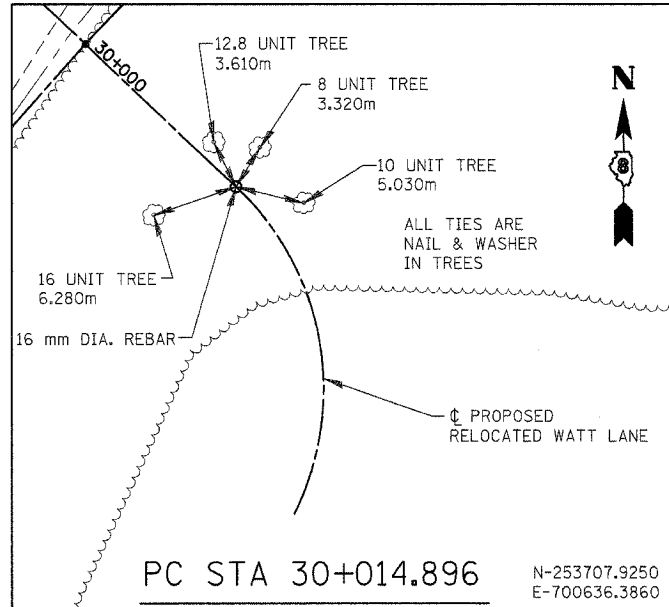


F.A.P. RTE.	SECTION	COUNTY	TOTAL SHEETS	SHEET NO.
310	60-15HB	MADISON	185	19
STA.		TO STA.		
FED. ROAD DIST. NO.		ILLINOIS FED. AID PROJECT		
CONTRACT NO. 76626				



NOTES:  
TIES MAY BE LOCATED AT TREES, CULVERTS, FENCE POSTS, AND OTHER ITEMS SCHEDULED FOR REMOVAL.  
ALL TIES REFERENCED FROM NAD83(1986).  
ALL TIE DISTANCES ARE DIRECT UNLESS OTHERWISE NOTED.

REVISIONS		ILLINOIS DEPARTMENT OF TRANSPORTATION HORIZONTAL ALIGNMENT & LOCAL TIES RELOCATED WATT LANE MADISON COUNTY
NAME	DATE	

SCALE: NONE  
DATE: 04/2005  
DRAWN BY: JH  
CHECKED BY: FML

HORIZONTAL ALIGNMENT & LOCAL TIES - RELOCATED WATT LANE