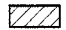



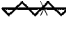



SE 1/4, SEC. 24, T 6 N, R 10 W, 3RD P.M.

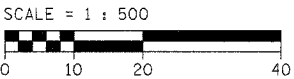
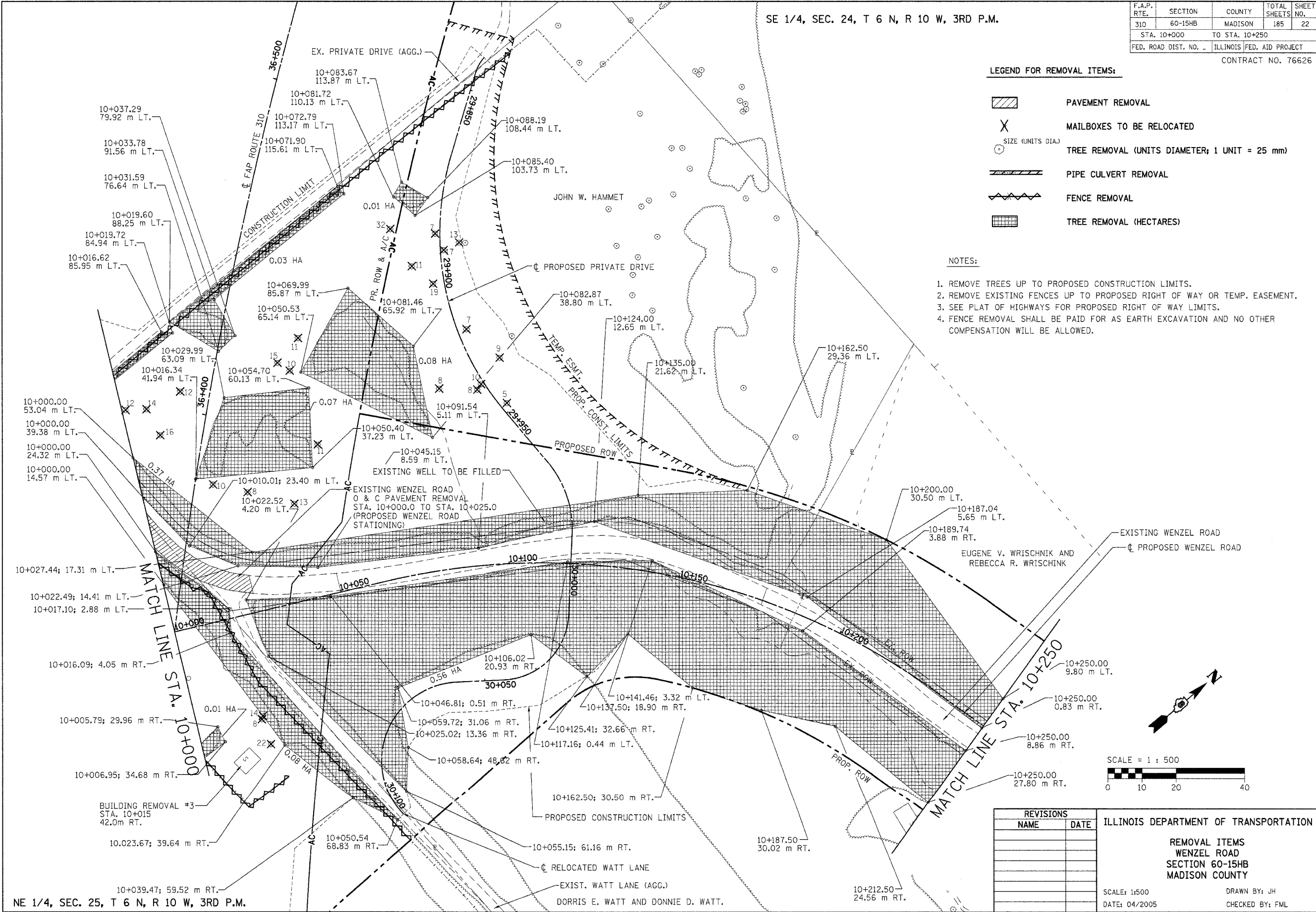
F.A.P. RTE.	SECTION	COUNTY	TOTAL SHEETS	SHEET NO.
310	60-15HB	MADISON	185	22
STA. 10+000		TO STA. 10+250		
FED. ROAD DIST. NO. -		ILLINOIS FED. AID PROJECT		
CONTRACT NO. 76626				

LEGEND FOR REMOVAL ITEMS:

-  PAVEMENT REMOVAL
-  MAILBOXES TO BE RELOCATED
-  TREE REMOVAL (UNITS DIAMETER; 1 UNIT = 25 mm)
-  PIPE CULVERT REMOVAL
-  FENCE REMOVAL
-  TREE REMOVAL (HECTARES)

NOTES:

1. REMOVE TREES UP TO PROPOSED CONSTRUCTION LIMITS.
2. REMOVE EXISTING FENCES UP TO PROPOSED RIGHT OF WAY OR TEMP. EASEMENT.
3. SEE PLAT OF HIGHWAYS FOR PROPOSED RIGHT OF WAY LIMITS.
4. FENCE REMOVAL SHALL BE PAID FOR AS EARTH EXCAVATION AND NO OTHER COMPENSATION WILL BE ALLOWED.



REVISIONS	
NAME	DATE

ILLINOIS DEPARTMENT OF TRANSPORTATION

REMOVAL ITEMS
WENZEL ROAD
SECTION 60-15HB
MADISON COUNTY

SCALE: 1:500
DATE: 04/2005

DRAWN BY: JH
CHECKED BY: FML

REMOVAL ITEMS - STA. 10+000 TO STA. 10+250