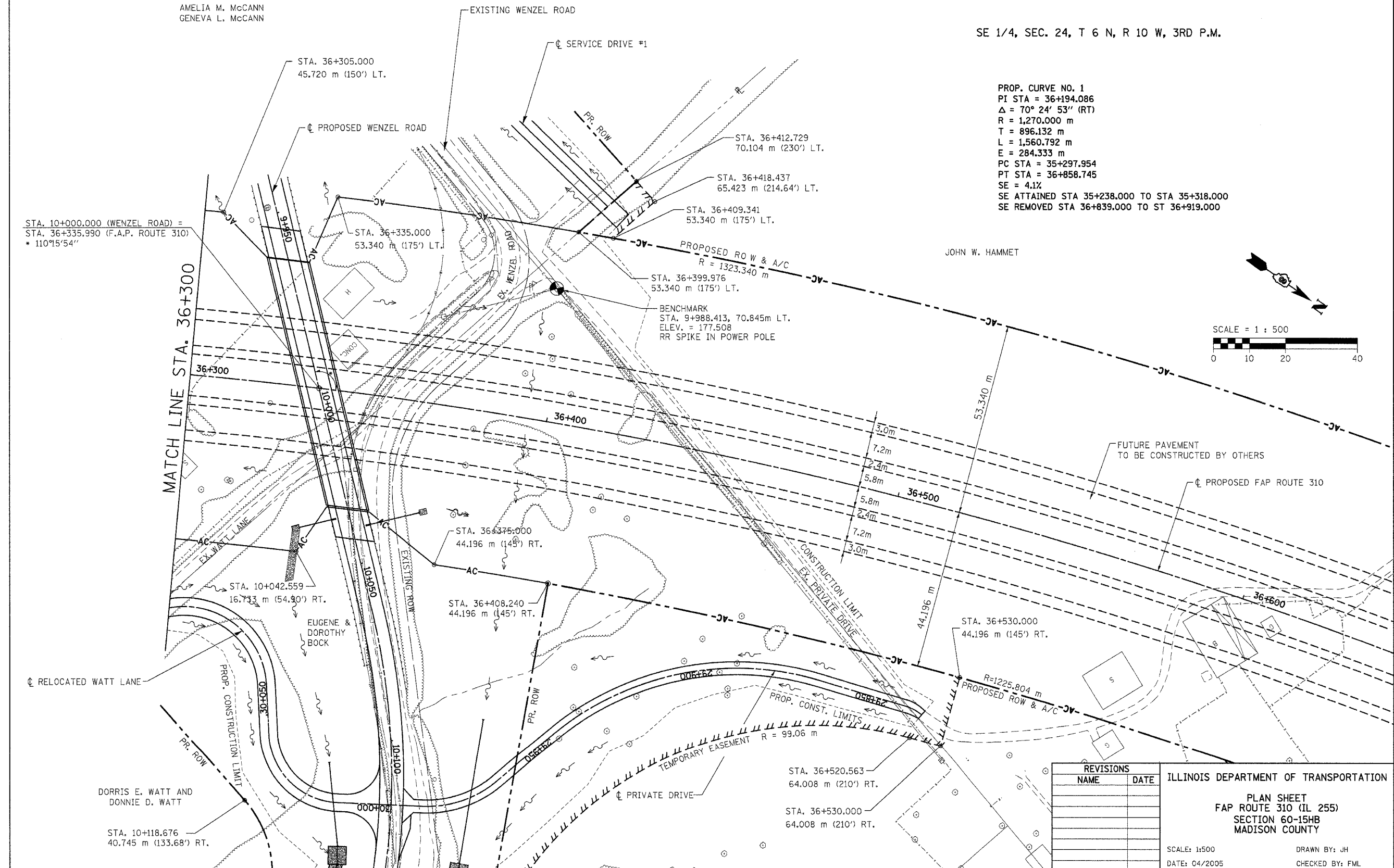


NE 1/4, SEC. 25, T 6 N, R 10 W, 3RD P.M.

F.A.P. RTE.	SECTION	COUNTY	TOTAL SHEETS	SHEET NO.
310	60-15HB	MADISON	185	26
STA. 36+300		TO STA. 36+650		
FED. ROAD DIST. NO.		ILLINOIS FED. AID PROJECT		
CONTRACT NO. 76626				

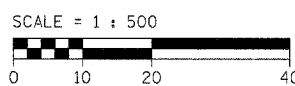
AMELIA M. McCANN  
GENEVA L. McCANN

SE 1/4, SEC. 24, T 6 N, R 10 W, 3RD P.M.



PROP. CURVE NO. 1  
 PI STA = 36+194.086  
 $\Delta = 70^\circ 24' 53''$  (RT)  
 R = 1,270.000 m  
 T = 896.132 m  
 L = 1,560.792 m  
 E = 284.333 m  
 PC STA = 35+297.954  
 PT STA = 36+858.745  
 SE = 4.1%  
 SE ATTAINED STA 35+238.000 TO STA 35+318.000  
 SE REMOVED STA 36+839.000 TO ST 36+919.000

JOHN W. HAMMET



REVISIONS	
NAME	DATE

ILLINOIS DEPARTMENT OF TRANSPORTATION  
 PLAN SHEET  
 FAP ROUTE 310 (IL 255)  
 SECTION 60-15HB  
 MADISON COUNTY  
 SCALE: 1:500  
 DATE: 04/2005  
 DRAWN BY: JH  
 CHECKED BY: FML

e:\0002\wenzel\10\10310\_2.dgn 7/30/2007 8:54:31 AM