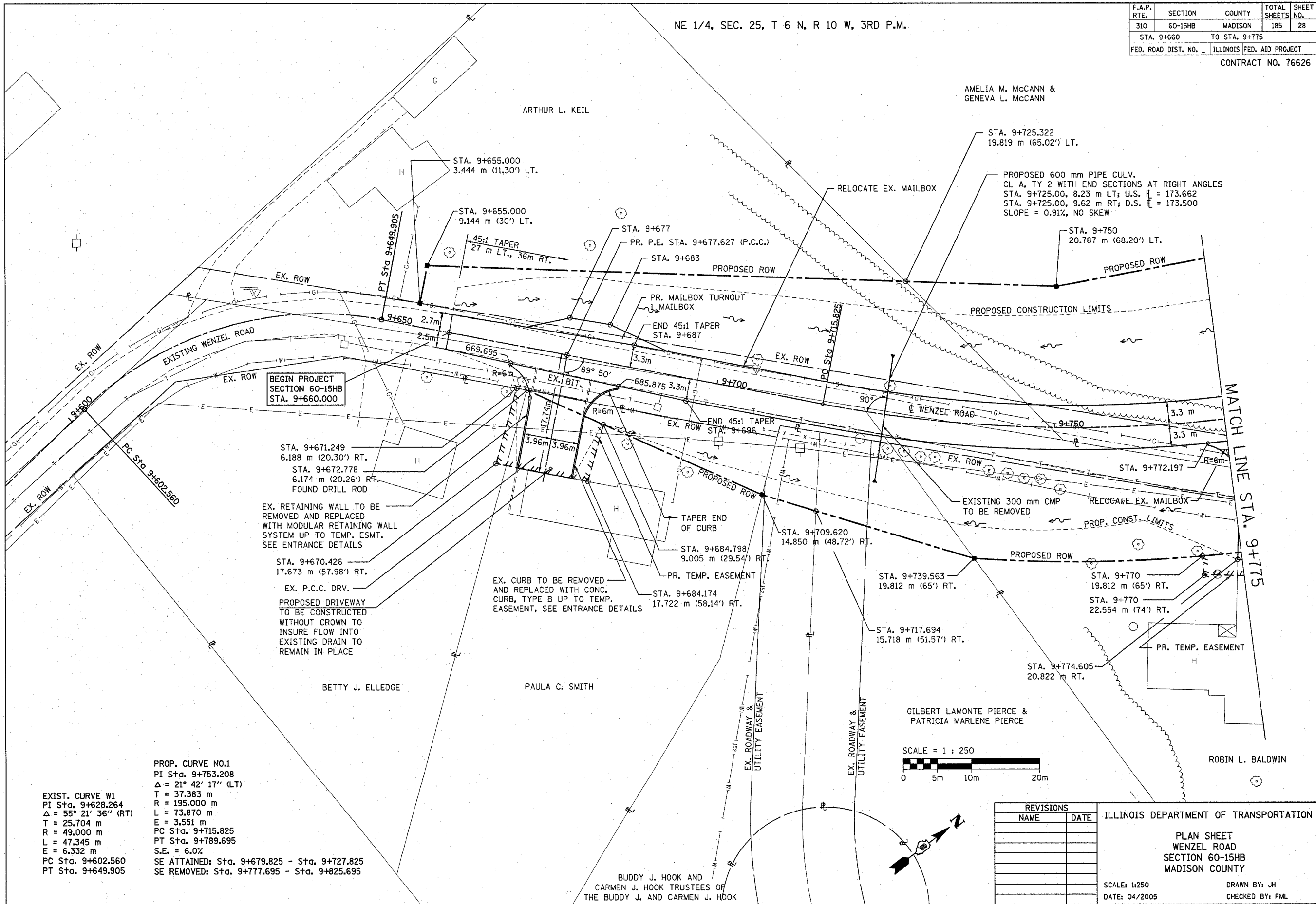


NE 1/4, SEC. 25, T 6 N, R 10 W, 3RD P.M.

F.A.P. RTE.	SECTION	COUNTY	TOTAL SHEETS	SHEET NO.
310	60-15HB	MADISON	185	28
STA. 9+660 TO STA. 9+775				
FED. ROAD DIST. NO. ILLINOIS			FED. AID PROJECT	
CONTRACT NO. 76626				



BEGIN PROJECT SECTION 60-15HB STA. 9+660.000

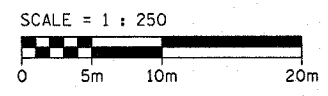
EX. RETAINING WALL TO BE REMOVED AND REPLACED WITH MODULAR RETAINING WALL SYSTEM UP TO TEMP. ESMT. SEE ENTRANCE DETAILS

EX. P.C.C. DRV. PROPOSED DRIVEWAY TO BE CONSTRUCTED WITHOUT CROWN TO INSURE FLOW INTO EXISTING DRAIN TO REMAIN IN PLACE

EX. CURB TO BE REMOVED AND REPLACED WITH CONC. CURB, TYPE B UP TO TEMP. EASEMENT, SEE ENTRANCE DETAILS

EXIST. CURVE W1
 PI Sta. 9+628.264
 $\Delta = 55^\circ 21' 36''$ (RT)
 T = 25.704 m
 R = 49.000 m
 L = 47.345 m
 E = 6.332 m
 PC Sta. 9+602.560
 PT Sta. 9+649.905

PROP. CURVE NO.1
 PI Sta. 9+753.208
 $\Delta = 21^\circ 42' 17''$ (LT)
 T = 37.383 m
 R = 195.000 m
 L = 73.870 m
 E = 3.551 m
 PC Sta. 9+715.825
 PT Sta. 9+789.695
 S.E. = 6.0%
 SE ATTAINED: Sta. 9+679.825 - Sta. 9+727.825
 SE REMOVED: Sta. 9+777.695 - Sta. 9+825.695



REVISIONS	
NAME	DATE

ILLINOIS DEPARTMENT OF TRANSPORTATION
 PLAN SHEET
 WENZEL ROAD
 SECTION 60-15HB
 MADISON COUNTY
 SCALE: 1:250
 DATE: 04/2005
 DRAWN BY: JH
 CHECKED BY: FML