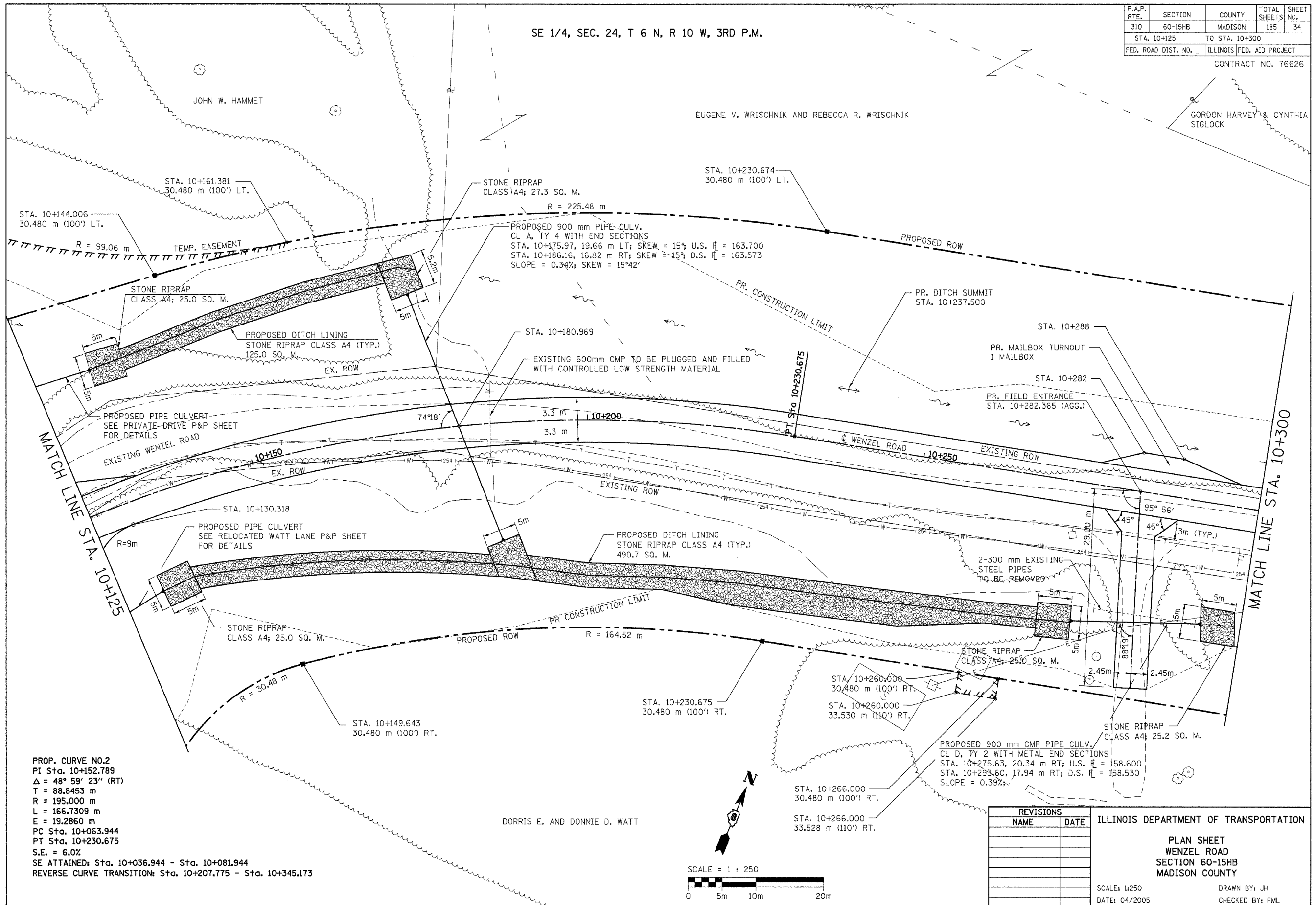


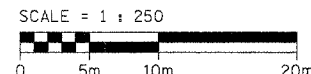
SE 1/4, SEC. 24, T 6 N, R 10 W, 3RD P.M.

| | | | | |
|---------------------|---------|---------------------------|--------------|-----------|
| F.A.P. RTE. | SECTION | COUNTY | TOTAL SHEETS | SHEET NO. |
| 310 | 60-15HB | MADISON | 185 | 34 |
| STA. 10+125 | | TO STA. 10+300 | | |
| FED. ROAD DIST. NO. | | ILLINOIS FED. AID PROJECT | | |
| CONTRACT NO. 76626 | | | | |



PROP. CURVE NO.2
 PI Sta. 10+152.789
 $\Delta = 48^\circ 59' 23''$ (RT)
 T = 88.8453 m
 R = 195.000 m
 L = 166.7309 m
 E = 19.2860 m
 PC Sta. 10+036.944
 PT Sta. 10+230.675
 S.E. = 6.0%
 SE ATTAINED: Sta. 10+036.944 - Sta. 10+081.944
 REVERSE CURVE TRANSITION: Sta. 10+207.775 - Sta. 10+345.173

DORRIS E. AND DONNIE D. WATT



| REVISIONS | |
|-----------|------|
| NAME | DATE |
| | |
| | |
| | |
| | |
| | |

ILLINOIS DEPARTMENT OF TRANSPORTATION
 PLAN SHEET
 WENZEL ROAD
 SECTION 60-15HB
 MADISON COUNTY
 SCALE: 1:250
 DATE: 04/2005
 DRAWN BY: JH
 CHECKED BY: FML

PLAN SHEET - WENZEL ROAD - STA. 10+125 TO STA. 10+300