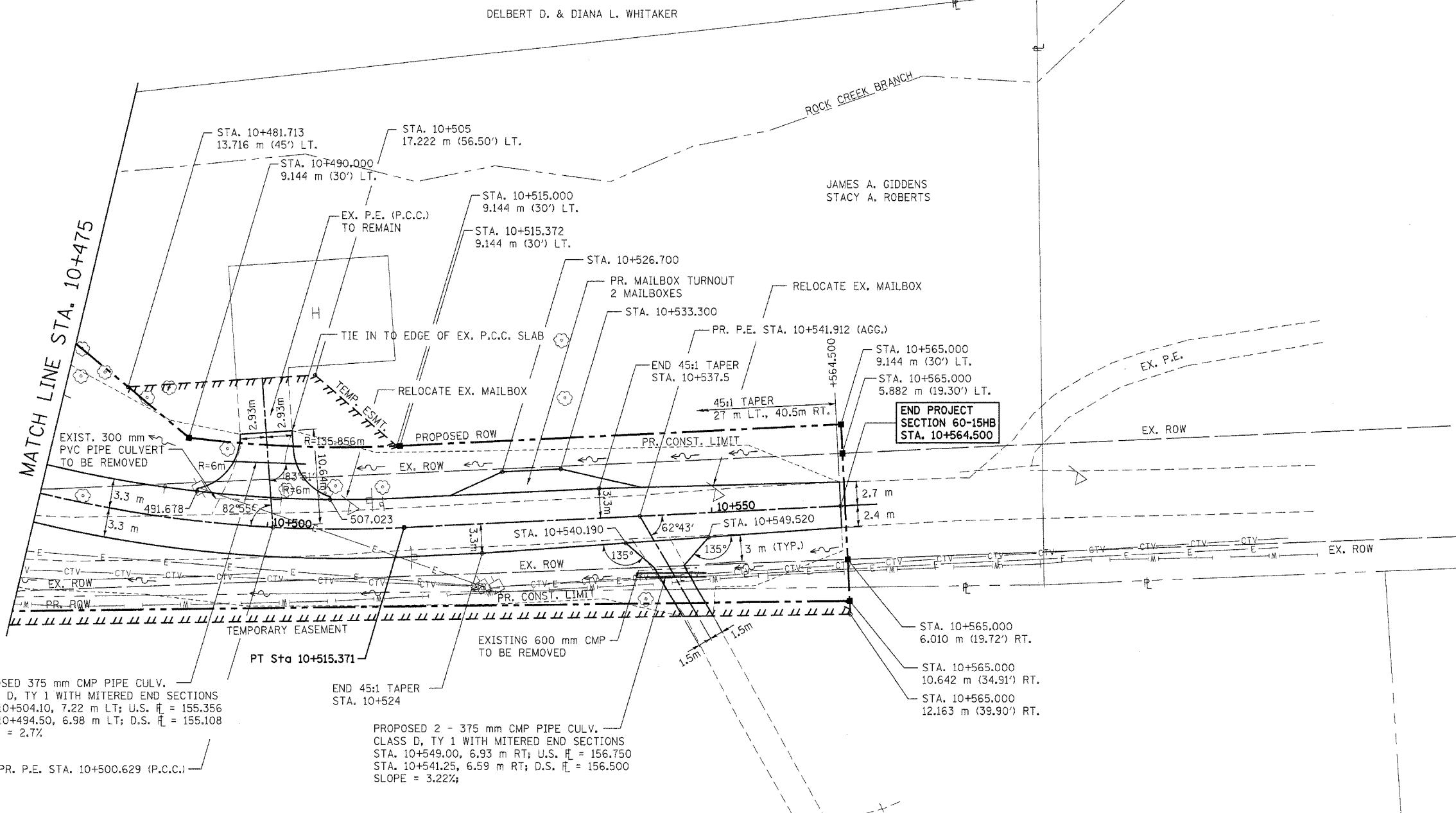


SE 1/4, SEC. 24, T 6 N, R 10 W, 3RD P.M.

F.A.P. RTE.	SECTION	COUNTY	TOTAL SHEETS	SHEET NO.
310	60-15HB	MADISON	185	38
STA. 10+475		TO STA. 10+564.500		
FED. ROAD DIST. NO.		ILLINOIS FED. AID PROJECT		
CONTRACT NO. 76626				



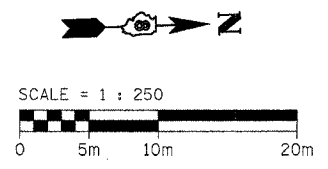
PROPOSED 375 mm CMP PIPE CULV.  
CLASS D, TY 1 WITH MITERED END SECTIONS  
STA. 10+504.10, 7.22 m LT; U.S.  $\bar{r}$  = 155.356  
STA. 10+494.50, 6.98 m LT; D.S.  $\bar{r}$  = 155.108  
SLOPE = 2.7%

END 45:1 TAPER  
STA. 10+524

PROPOSED 2 - 375 mm CMP PIPE CULV.  
CLASS D, TY 1 WITH MITERED END SECTIONS  
STA. 10+549.00, 6.93 m RT; U.S.  $\bar{r}$  = 156.750  
STA. 10+541.25, 6.59 m RT; D.S.  $\bar{r}$  = 156.500  
SLOPE = 3.22%

PROP. CURVE NO.3  
PI Sta. 10+436.175  
 $\Delta = 76^\circ 18' 06''$  (LT)  
T = 113.902 m  
R = 145.000 m  
L = 193.099 m  
E = 39.387 m  
PC Sta. 10+322.273  
PT Sta. 10+515.371  
S.E. = 6.0%  
SE REMOVED: Sta. 10+503.371 - Sta. 10+551.371

BRUCE L. ORBAN AND SUSAN L. ORBAN



REVISIONS	
NAME	DATE

ILLINOIS DEPARTMENT OF TRANSPORTATION  
  
PLAN SHEET  
WENZEL ROAD  
SECTION 60-15HB  
MADISON COUNTY  
  
SCALE: 1:250  
DATE: 04/2005  
  
DRAWN BY: JH  
CHECKED BY: FML

e:\0002\wenzel\wenzel15b.dgn 7/30/2007 8:54:52 AM