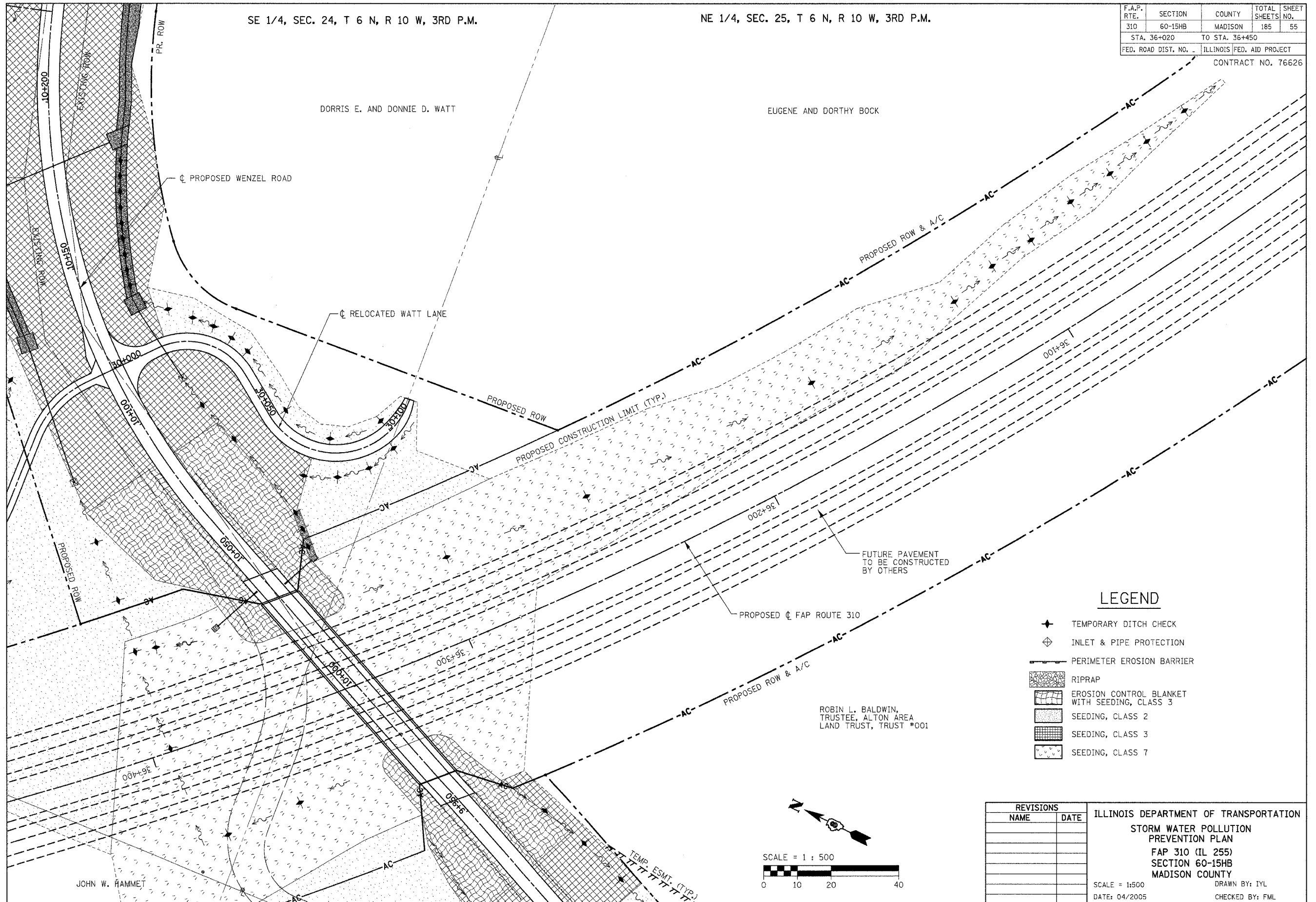


SE 1/4, SEC. 24, T 6 N, R 10 W, 3RD P.M.

NE 1/4, SEC. 25, T 6 N, R 10 W, 3RD P.M.

F.A.P. RTE.	SECTION	COUNTY	TOTAL SHEETS	SHEET NO.
310	60-15HB	MADISON	185	55
STA. 36+020		TO STA. 36+450		
FED. ROAD DIST. NO. -		ILLINOIS FED. AID PROJECT		
CONTRACT NO. 76626				



LEGEND

- ◆ TEMPORARY DITCH CHECK
- ⊕ INLET & PIPE PROTECTION
- PERIMETER EROSION BARRIER
- [Cross-hatched] RIPRAP
- [Wavy lines] EROSION CONTROL BLANKET WITH SEEDING, CLASS 3
- [Dotted] SEEDING, CLASS 2
- [Grid] SEEDING, CLASS 3
- [Stippled] SEEDING, CLASS 7

REVISIONS		ILLINOIS DEPARTMENT OF TRANSPORTATION STORM WATER POLLUTION PREVENTION PLAN FAP 310 (IL 255) SECTION 60-15HB MADISON COUNTY SCALE = 1:500 DATE: 04/2005
NAME	DATE	
		DRAWN BY: IYL CHECKED BY: FML

STORM WATER POLLUTION PREVENTION PLAN - FAP ROUTE 310 - STA. 36+020 TO 36+450