

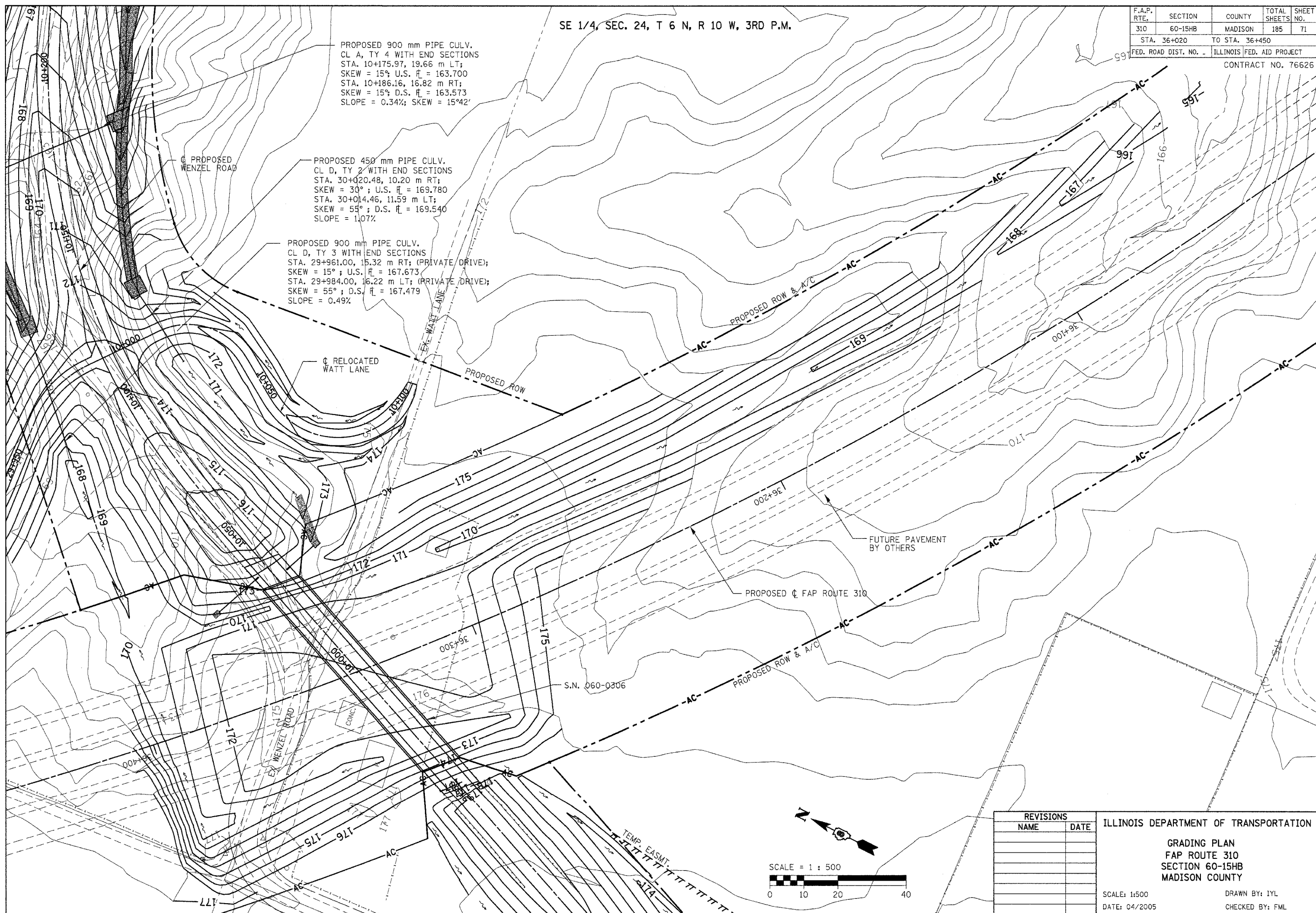
SE 1/4, SEC. 24, T 6 N, R 10 W, 3RD P.M.

F.A.P. RTE.	SECTION	COUNTY	TOTAL SHEETS	SHEET NO.
310	60-15HB	MADISON	185	71
STA. 36+020		TO STA. 36+450		
FED. ROAD DIST. NO. -		ILLINOIS FED. AID PROJECT		
CONTRACT NO. 76626				

PROPOSED 900 mm PIPE CULV.
CL A, TY 4 WITH END SECTIONS
STA. 10+175.97, 19.66 m LT;
SKEW = 15°; U.S. \bar{H} = 163.700
STA. 10+186.16, 16.82 m RT;
SKEW = 15°; D.S. \bar{H} = 163.573
SLOPE = 0.34%; SKEW = 15°42'

PROPOSED 450 mm PIPE CULV.
CL D, TY 2 WITH END SECTIONS
STA. 30+020.48, 10.20 m RT;
SKEW = 30°; U.S. \bar{H} = 169.780
STA. 30+014.46, 11.59 m LT;
SKEW = 55°; D.S. \bar{H} = 169.540
SLOPE = 1.07%

PROPOSED 900 mm PIPE CULV.
CL D, TY 3 WITH END SECTIONS
STA. 29+961.00, 15.32 m RT; (PRIVATE DRIVE);
SKEW = 15°; U.S. \bar{H} = 167.673
STA. 29+984.00, 16.22 m LT; (PRIVATE DRIVE);
SKEW = 55°; D.S. \bar{H} = 167.479
SLOPE = 0.49%



FUTURE PAVEMENT BY OTHERS

PROPOSED \bar{C} FAP ROUTE 310

S.N. 060-0306

REVISIONS	
NAME	DATE

ILLINOIS DEPARTMENT OF TRANSPORTATION
GRADING PLAN
FAP ROUTE 310
SECTION 60-15HB
MADISON COUNTY
SCALE: 1:500
DATE: 04/2005
DRAWN BY: IYL
CHECKED BY: FML

GRADING PLAN - FAP ROUTE 310 - STA. 36+020 TO 36+450