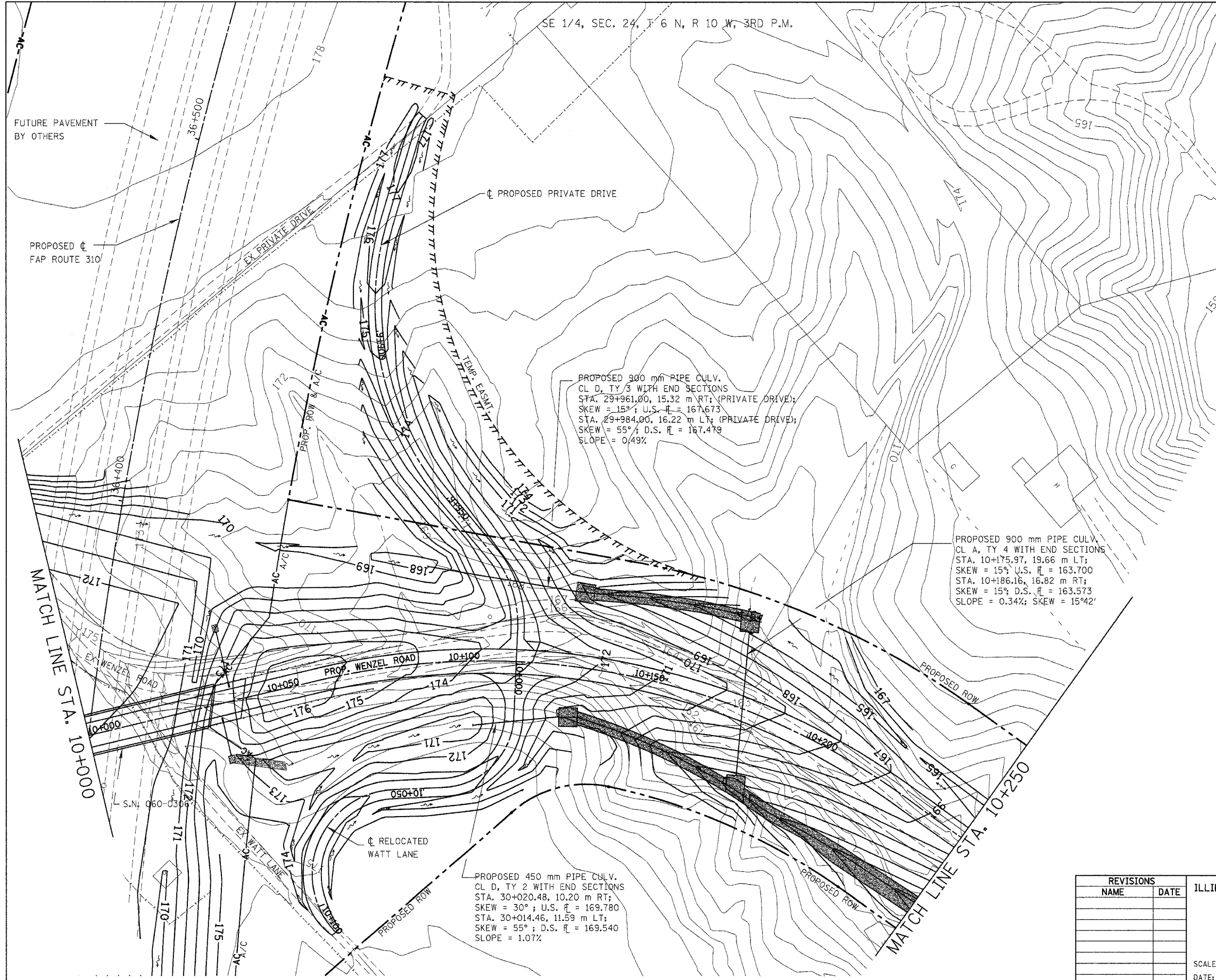


SE 1/4, SEC. 24, T 6 N, R 10 W, 3RD P.M.

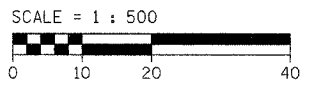
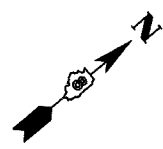
F.A.P. RTE.	SECTION	COUNTY	TOTAL SHEETS	SHEET NO.
310	60-15HB	MADISON	185	73
STA. 10+000		TO STA. 10+250		
FED. ROAD DIST. NO.		ILLINOIS FED. AID PROJECT		
CONTRACT NO. 76626				



PROPOSED 900 mm PIPE CULV.
 CL D, TY 3 WITH END SECTIONS
 STA. 29+961.00, 15.32 m RT; (PRIVATE DRIVE);
 SKEW = 15°; U.S. \bar{H} = 167.673
 STA. 29+984.00, 16.22 m LT; (PRIVATE DRIVE);
 SKEW = 55°; D.S. \bar{H} = 167.479
 SLOPE = 0.49%

PROPOSED 900 mm PIPE CULV.
 CL A, TY 4 WITH END SECTIONS
 STA. 10+175.97, 19.66 m LT;
 SKEW = 15°; U.S. \bar{H} = 163.700
 STA. 10+186.16, 16.82 m RT;
 SKEW = 15°; D.S. \bar{H} = 163.573
 SLOPE = 0.34%; SKEW = 15°42'

PROPOSED 450 mm PIPE CULV.
 CL D, TY 2 WITH END SECTIONS
 STA. 30+020.48, 10.20 m RT;
 SKEW = 30°; U.S. \bar{H} = 169.780
 STA. 30+014.46, 11.59 m LT;
 SKEW = 55°; D.S. \bar{H} = 169.540
 SLOPE = 1.07%



REVISIONS	
NAME	DATE

ILLINOIS DEPARTMENT OF TRANSPORTATION

GRADING PLAN
 WENZEL ROAD
 SECTION 60-15HB
 MADISON COUNTY

SCALE: 1:500
 DATE: 04/2005

DRAWN BY: IYL
 CHECKED BY: FML

GRADING PLAN - WENZEL ROAD - STA. 10+000 TO 10+250