

SE 1/4, SEC. 24, T 6 N, R 10 W, 3RD P.M.

F.A.P. RTE.	SECTION	COUNTY	TOTAL SHEETS	SHEET NO.
310	60-15HB	MADISON	185	74
STA. 10+250 TO STA. 10+564.500		ILLINOIS FED. AID PROJECT		
CONTRACT NO. 76626				

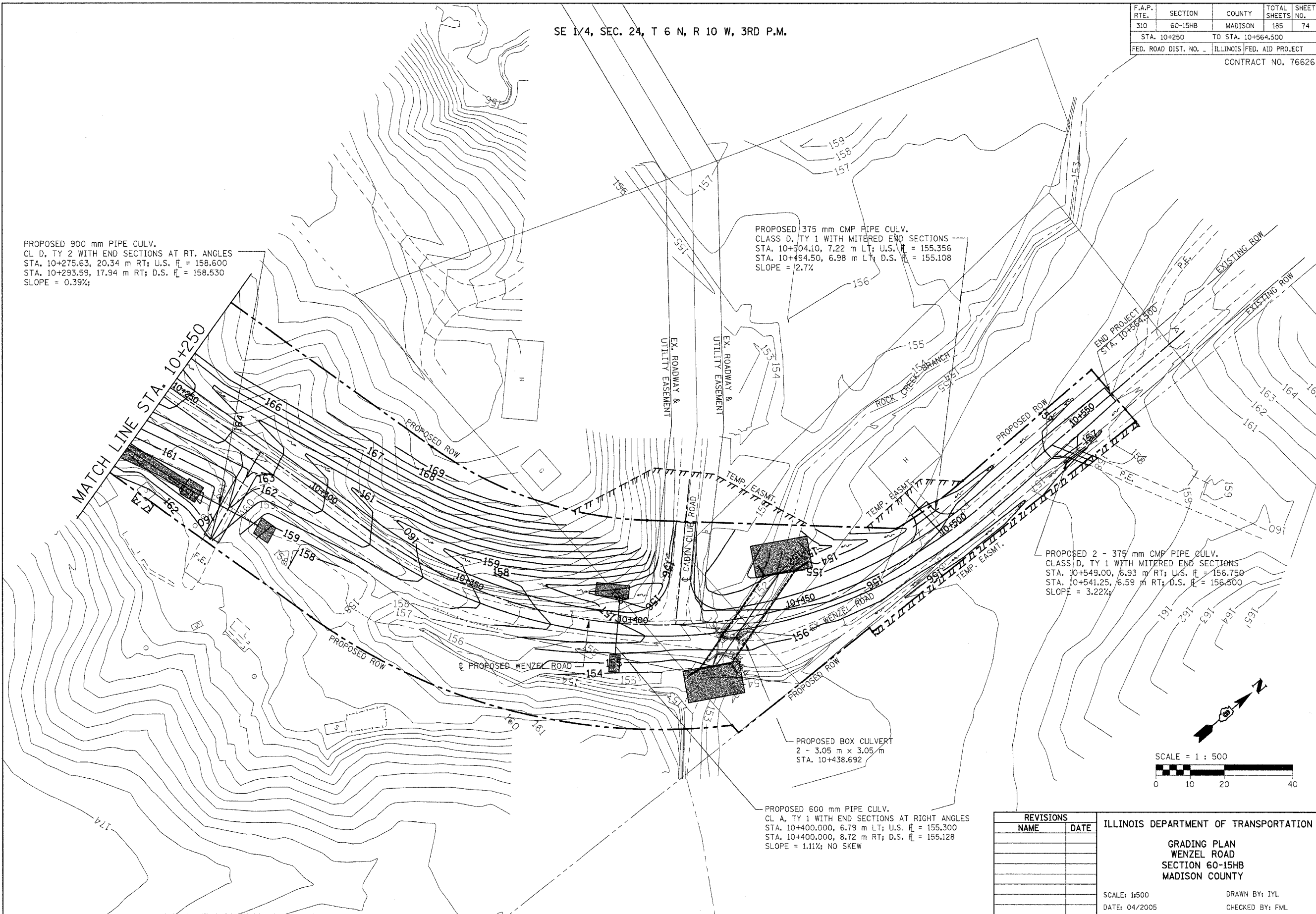
PROPOSED 900 mm PIPE CULV.  
 CL D, TY 2 WITH END SECTIONS AT RT. ANGLES  
 STA. 10+275.63, 20.34 m RT; U.S.  $\bar{H}$  = 158.600  
 STA. 10+293.59, 17.94 m RT; D.S.  $\bar{H}$  = 158.530  
 SLOPE = 0.39%;

PROPOSED 375 mm CMP PIPE CULV.  
 CLASS D, TY 1 WITH MITERED END SECTIONS  
 STA. 10+504.10, 7.22 m LT; U.S.  $\bar{H}$  = 155.356  
 STA. 10+494.50, 6.98 m LT; D.S.  $\bar{H}$  = 155.108  
 SLOPE = 2.7%

PROPOSED 2 - 375 mm CMP PIPE CULV.  
 CLASS D, TY 1 WITH MITERED END SECTIONS  
 STA. 10+549.00, 6.93 m RT; U.S.  $\bar{H}$  = 156.750  
 STA. 10+541.25, 6.59 m RT; D.S.  $\bar{H}$  = 156.500  
 SLOPE = 3.22%;

PROPOSED BOX CULVERT  
 2 - 3.05 m x 3.05 m  
 STA. 10+438.692

PROPOSED 600 mm PIPE CULV.  
 CL A, TY 1 WITH END SECTIONS AT RIGHT ANGLES  
 STA. 10+400.000, 6.79 m LT; U.S.  $\bar{H}$  = 155.300  
 STA. 10+400.000, 8.72 m RT; D.S.  $\bar{H}$  = 155.128  
 SLOPE = 1.11%; NO SKEW



REVISIONS	
NAME	DATE

ILLINOIS DEPARTMENT OF TRANSPORTATION

GRADING PLAN  
 WENZEL ROAD  
 SECTION 60-15HB  
 MADISON COUNTY

SCALE: 1:500  
 DATE: 04/2005

DRAWN BY: IYL  
 CHECKED BY: FML

GRADING PLAN - WENZEL ROAD - STA. 10+250 TO 10+564.500