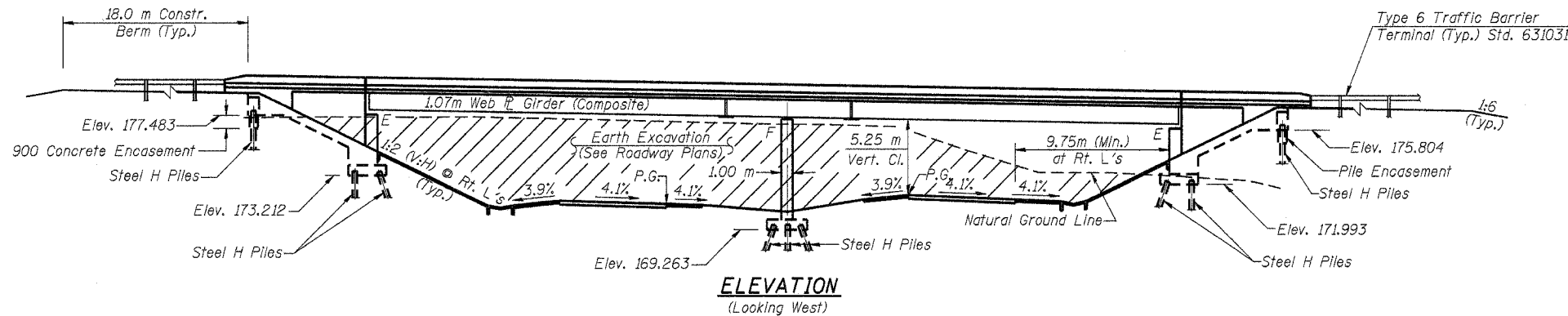


Bench Mark: #3012 - R.R. Spike In Power Pole Located on North Side of Wenzel Road Near Private Drive Entrance, Mainline Sta. 36+396.7, 36.8 m LT, Elev. 177.508

ROUTE NO.	SECTION	COUNTY	DATE	SHEET	SHEET NO. 1
F.A.P. 310	60-15HB	MADISON	185	76	20 SHEETS
FED. ROAD DIST. NO.	ILLINOIS	FED. AID PROJECT			

CONTRACT NO. T6626

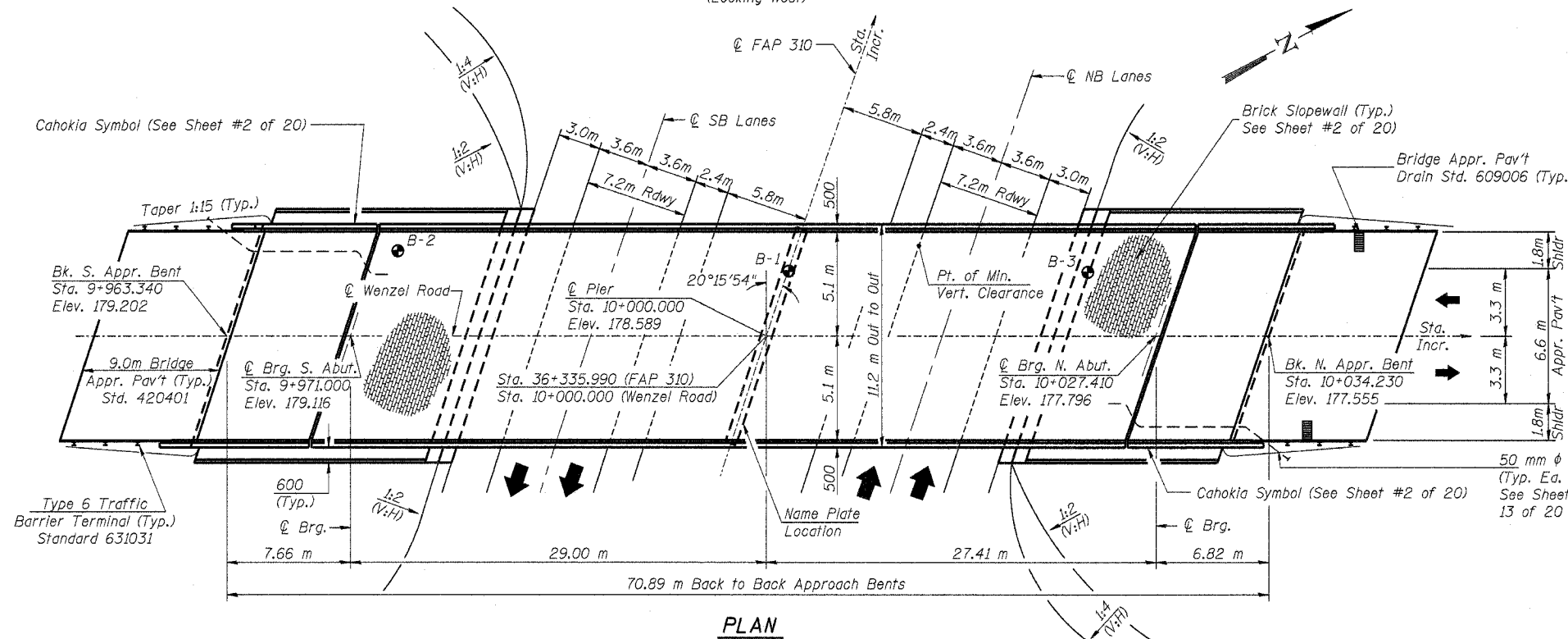
Existing Structure: None



TOTAL BILL OF MATERIAL

ITEM	UNIT	SUPER	SUB	TOTAL
Elastomeric Bearing Assembly, Type I	Each	12	-	12
Furnishing and Erecting Structural Steel	L.Sum	1	-	1
Stud Shear Connectors	Each	2160	-	2160
Name Plates	Each	-	1	1
Protective Coat	m ²	877	-	877
Structure Excavation	m ³	-	372	372
Preformed Joint Strip Seal	m	23.0	-	23.0
Concrete Structures	m ³	281.2	-	281.2
Concrete Superstructure	m ³	229.7	-	229.7
Bridge Deck Grooving	m ²	681	-	681
Reinforcement Bars, Epoxy Coated	kg	32280	19230	51510
Furnishing Steel Piles HP 310x79	m	-	548.0	548.0
Furnishing Steel Piles HP 250x62	m	-	213.5	213.5
Furnishing Steel Piles HP 200x54	m	-	247.0	247.0
Test Pile Steel HP 200x54	Each	-	2	2
Driving Piles	m	-	1008.5	1008.5
Concrete Sealer	m ²	-	16	16
Slopedwall 150	m ²	-	48	48
Brick Slopedwall	m ²	-	147	147
Form Liner Textured Surface	m ²	-	217	217
Pipe Underdrains for Structures, 100 mm	m	-	29.9	29.9
Porous Granular Embankment (Special)	m ³	-	252	252
Concrete Encasement	m ³	-	2.4	2.4
Geocomposite Wall Drain	m ²	-	96.6	96.6

* Quantity includes Approach Slab



STATION 36+355.990
 BUILT 200_ BY
 STATE OF ILLINOIS
 F.A. RTE. 310 SEC. 60-15HB
 LOADING MS18
 STR. NO. 060-0306
NAME PLATE
 See Std. 515001

CURVE DATA (FAP 310)

PI STA. 36+194.086
 $\Delta = 70^\circ 24' 53''$ (RT)
 T = 896.132 m
 R = 1,270.000 m
 L = 1,560.792 m
 E = 284.333 m
 PC STA. 35+297.954
 PT STA. 36+858.745
 S.E. = 4.1%



Paul B. Lin 10/01/07 Date
 Paul B. Lin
 Licensed Structural Engineer
 State of Illinois No. 81-4419
 Expires 11/30/2008

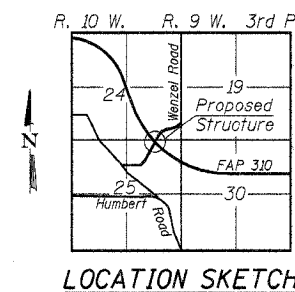
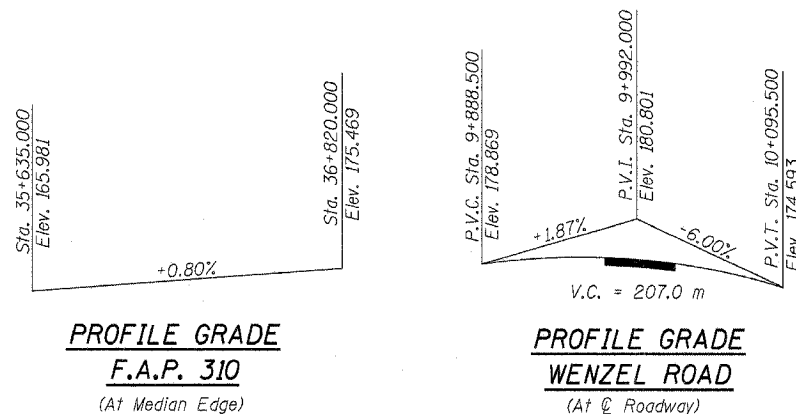
APPROVED
 FOR STRUCTURAL ADEQUACY ONLY
Ralph E. Anderson
 ENGINEER OF BRIDGES AND STRUCTURES

ILLINOIS DEPARTMENT OF TRANSPORTATION
GENERAL PLAN
 WENZEL ROAD OVER F.A.P. RTE 310
 SECTION 60-15HB
 MADISON COUNTY
 STA. 36+335.990 (FAP 310)
 STA. 10+000.000 (WENZEL ROAD)
 STRUCTURE NO. 060-0306

LOADING MS 18
 Allow 2.4 kPa for future wearing surface.
DESIGN SPECIFICATIONS
 2002 AASHTO Specifications

SEISMIC DATA
 Seismic Performance Category = A
 Bedrock Acceleration Coefficient = 0.080 g
 Site Coefficient = 1.0

DESIGN STRESSES
 $f'_c = 24$ MPa
 $f_y = 400$ MPa (Reinf.)
 $f_y = 345$ MPa (Structural Steel) M270M Grade 345
 $f_y = 250$ MPa (Structural Steel) M270M Grade 250



REVISIONS	
NAME	

LIN ENGINEERING, LTD.
 200 N. Chestnut
 Chatham, Illinois 62829
 (618) 483-4888 FAX (618) 483-4106
 Designed By: WTH Checked By: PBL Drawn By: JMO
 Date: 02/03 File: 0600306.DWG