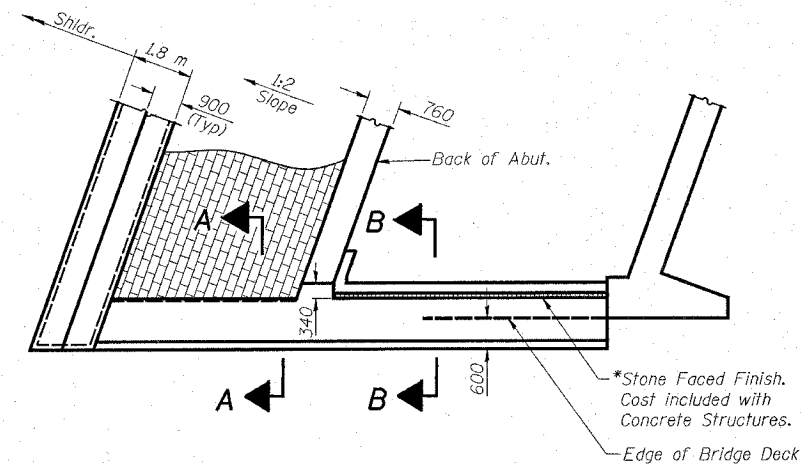
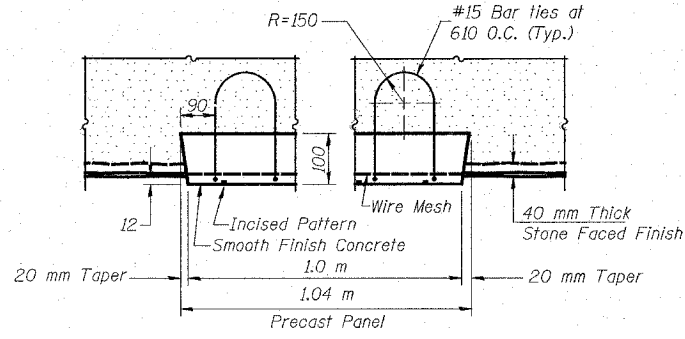


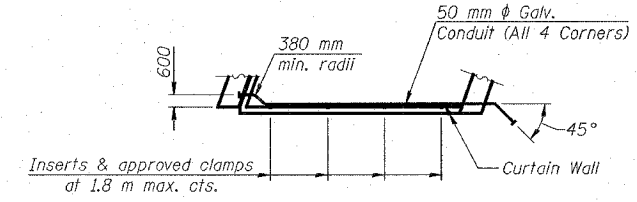
ROUTE NO.	SECTION	COUNTY	TOTAL SHEETS	SHEET NO.	SHEET NO. 2 20 SHEETS
F.A.P. 310	60- 15HB	MADISON	185	77	
FED. ROAD DIST. NO.	ILLINOIS	FED. AID PROJECT	CONTRACT NO. 76626		



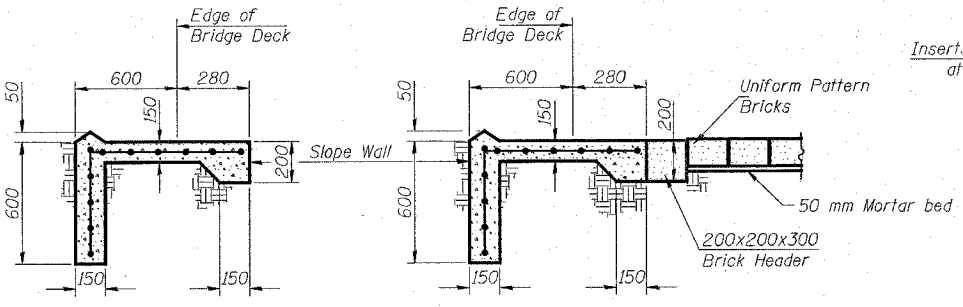
SLOPEWALL PLAN



SECTION C-C
(At N.W. & S.E. Corners Only)

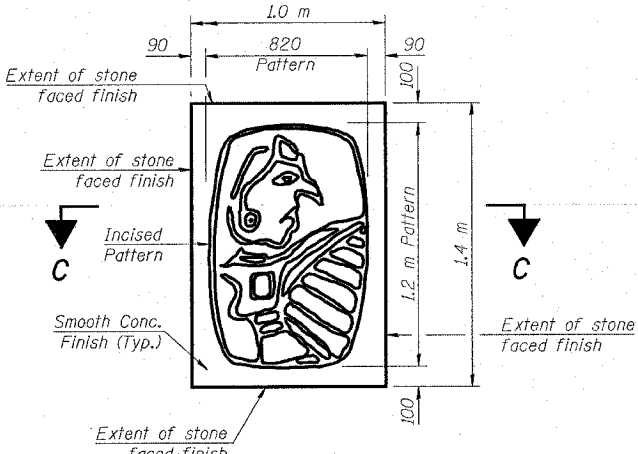


PARTIAL PLAN VIEW
Showing Electrical Conduit



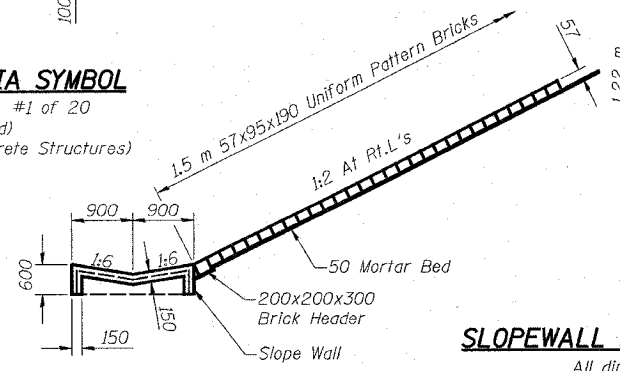
SECTION B-B

SECTION A-A



DETAIL CAHOKIA SYMBOL

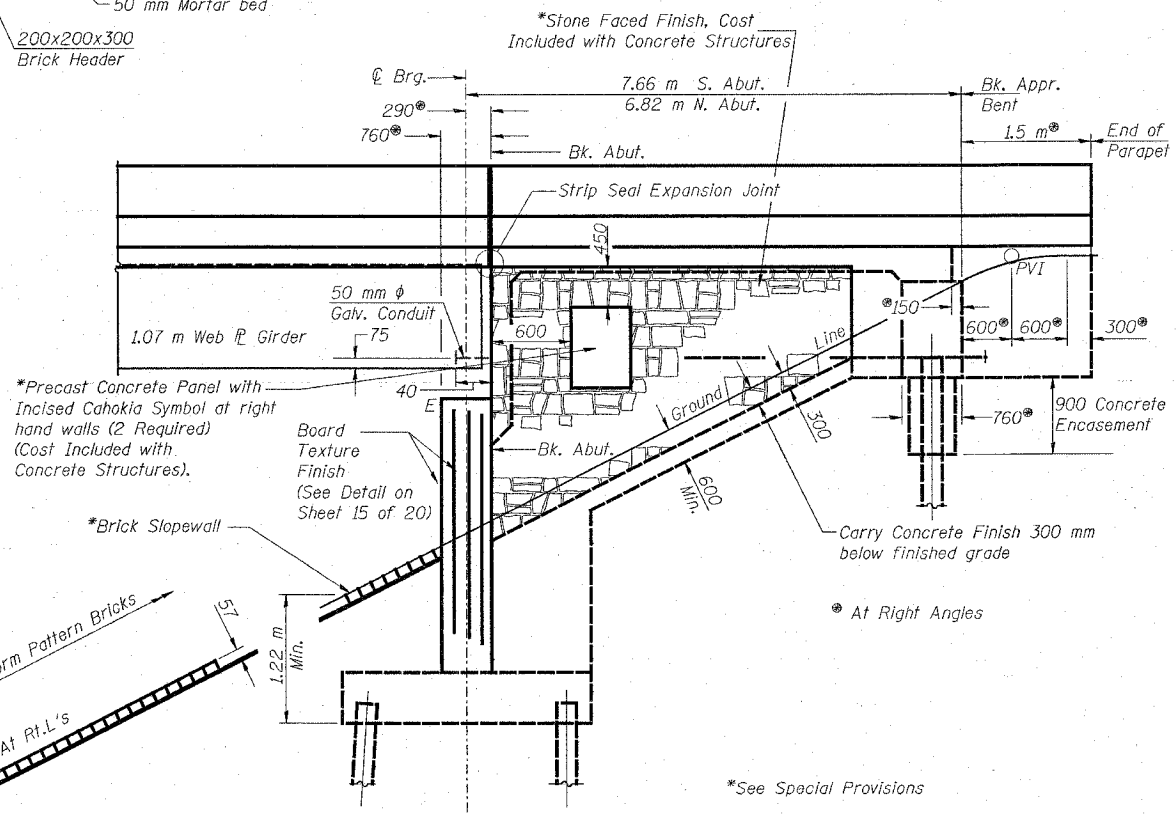
For location see sh. #1 of 20
(2 Required)
(Cost included with Concrete Structures)



SLOPEWALL DETAIL

All dimensions are in millimeters except as noted.

Slopes indicated thus 1:6, etc. indicates
V:H (Vertical to Horizontal).



DETAIL OF VAULTED ABUTMENT

*See Special Provisions

GENERAL NOTES

Fasteners shall be AASHTO M164M Type 1, mechanically galvanized bolts. Bolts M22, open holes 24 mm ϕ , unless otherwise noted.

Calculated mass of structural steel= 7160 kg (M270 Grade 250)
86050 kg (M270 Grade 345)

No field welding is permitted except as specified in the contract documents.

All diaphragms shall be installed as steel is erected and secured with erection pins and bolts except as otherwise noted. Individual diaphragms at supports may be temporarily disconnected to install bearing anchor rods.

The structural steel bearing plates of the elastomeric bearing assembly shall conform to the requirements of AASHTO M 270M Grade 345.

Load carrying components designated "NTR" shall conform to the Supplemental Requirements for Notch Toughness, Zone 2.

Reinforcement bars shall conform to the requirements of ASTM A 706M Gr 400 (IL Modified). See Special Provisions.

Slope wall shall be reinforced with welded wire fabric, 152x152 MW25.8 x MW25.8 with a mass of 2.91 kg/m².

The embankment configuration shown shall be the minimum that must be placed and compacted prior to construction of the abutments.

Bearing seat surfaces shall be constructed or adjusted to the designated elevations within a tolerance of 3mm. Adjustment shall be made either by grinding the surface or by shimming the bearing. Two 3 mm adjusting shims, of the dimensions of the bottom bearing plate, shall be provided for each bearing in addition to all other plates or shims. For Type I elastomeric bearings, two 3 mm adjusting shims shall be provided for each bearing and placed as detailed.

The Contractor shall drive test piles to 110% of the nominal required bearing specified in production locations, one at each approach bent as approved by the Engineer before ordering the remainder of piles.

Concrete sealer shall be applied to the seat area of the abutments.

All dimensions are in millimeters (mm) except as noted.

The Inorganic Zinc Rich Primer / Acrylic / Acrylic Paint System shall be used for shop and field painting of new structural steel except where otherwise noted. The color of the final finish coat for all steel surfaces shall be Reddish Brown, Munsell No. 2.5YR 3/4. See Special Provision for "Cleaning and Painting New Metal Structures".

If the contractor elects to use cantilever forming brackets on the exterior beams or girders, the brackets shall be placed at the same locations as required for the hardwood blocks in Article 503.06 (b) of the Standard Specifications. If additional cantilever forming brackets are required, hardwood blocking shall be wedged between the exterior and first interior beam at each of these additional bracket locations.

The steel H-piles shall be according to AASHTO M270M Grade 345.

LIN ENGINEERING, LTD.
210 W. Chestnut
Chicago, Illinois 60629
(312) 483-8568
FAX (312) 483-4100
Designed By: WTV Checked By: PFB Drawn By: JMD
Date: 02/05 File: 0000306.DWG

REVISIONS	
NO.	DESCRIPTION

ILLINOIS DEPARTMENT OF TRANSPORTATION
GENERAL NOTES & MISC. DETAILS
WENZEL ROAD OVER F.A.P. RTE 310
SECTION 60-15HB
MADISON COUNTY
STA. 36+335.990 (FAP 310)
STA. 10+000.000 (WENZEL ROAD)
STRUCTURE NO. 060-0306