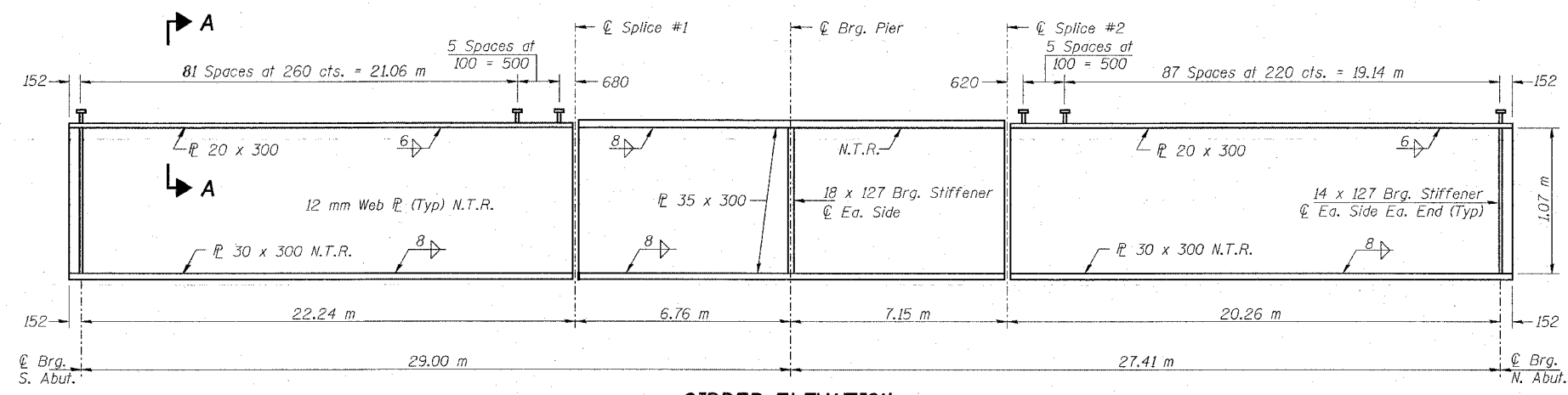
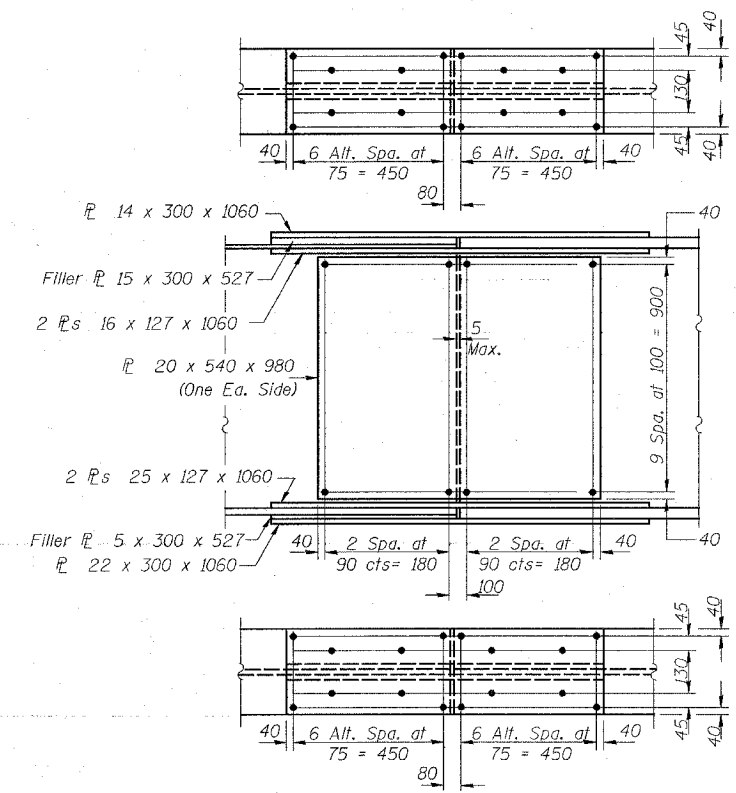


FRAMING PLAN

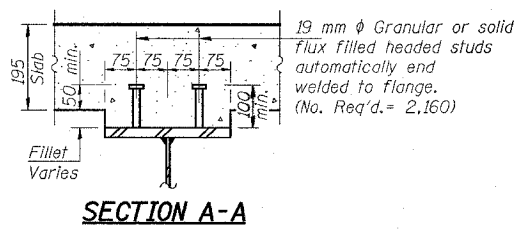


GIRDER ELEVATION

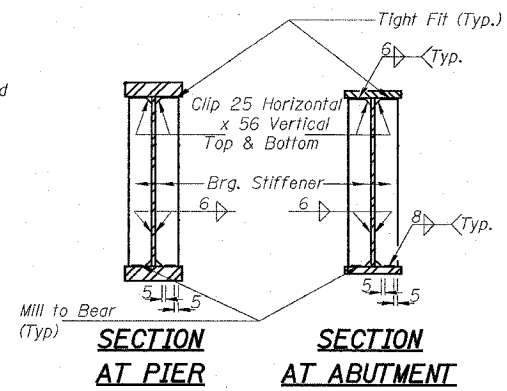
"NTR" denotes plates to which notch toughness requirements are applicable.



FIELD SPLICE DETAIL



SECTION A-A



SECTION AT PIER

SECTION AT ABUTMENT

TOP OF WEB ELEVATIONS

(For Fabrication Only)

Location	Girder 1	Girder 2	Girder 3	Girder 4	Girder 5	Girder 6
© Brg. S. Abutment	178.787	178.829	178.864	178.873	178.854	178.829
© Splice #1	178.394	178.441	178.482	178.496	178.483	178.464
© Brg. Pier	178.226	178.275	178.318	178.334	178.322	178.305
© Splice #2	178.049	178.099	178.144	178.162	178.152	178.137
© Brg. N. Abutment	177.432	177.488	177.537	177.560	177.556	177.545

Note: Girder Plates, Brg. stiffeners, and splice plates shall be AASHTO M270M, grade 345 unless noted otherwise.

All Splice plates except Fill plates shall meet N.T.R.

LIN ENGINEERING LTD.
 30 W. Chestnut
 020-452-990
 020-452-990
 Date: 02/03 File: 060306.DWG

REVISIONS	NAME

ILLINOIS DEPARTMENT OF TRANSPORTATION
FRAMING PLAN & STEEL DETAILS
WENZEL ROAD OVER F.A.P. RTE 310
SECTION 60-15HB
MADISON COUNTY
STA. 36+335.990 (FAP 310)
STA. 10+000.000 (WENZEL ROAD)
STRUCTURE NO. 060-0306