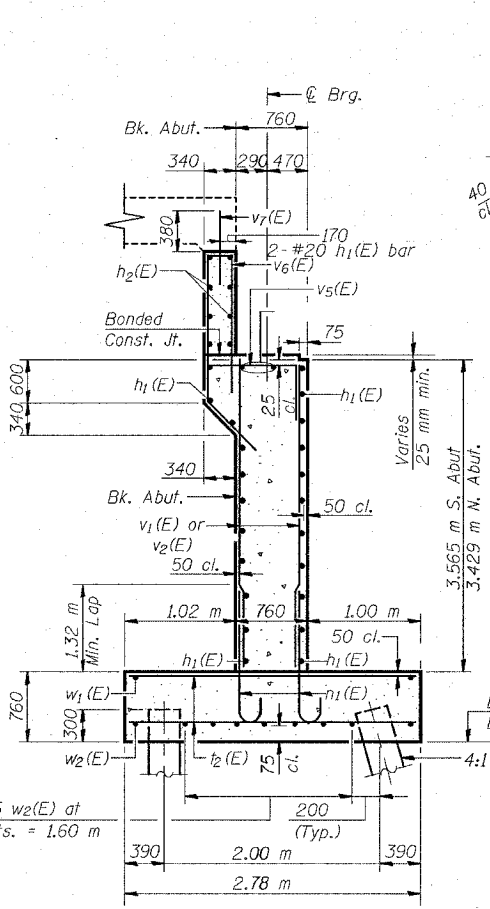


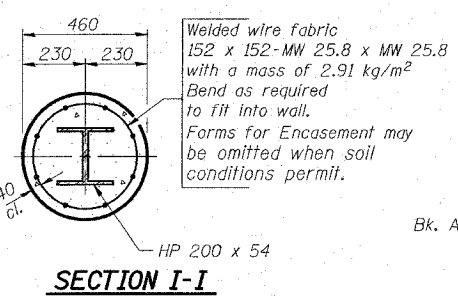
**BILL OF MATERIAL**  
**2 ABUTMENTS**

Bar	No.	Size	Length (m)	Shape
$h_1(E)$	54	#20	10.52	—
$h_2(E)$	16	#15	10.52	—
$h_3(E)$	50	#15	1.55	—
$h_4(E)$	33	#15	0.89	—
$h_5(E)$	33	#15	0.89	—
$h_6(E)$	25	#15	1.44	—
$h_7(E)$	25	#15	1.44	—
$h_8(E)$	16	#15	0.91	—
$h_9(E)$	10	#15	3.36	—
$h_{10}(E)$	20	#15	2.20	—
$h_{11}(E)$	20	#15	1.40	—
$h_{12}(E)$	10	#15	3.15	—
$h_{13}(E)$	16	#15	2.70	—
$h_{14}(E)$	40	#15	0.76	—
$h_{15}(E)$	24	#15	5.89	—
$h_{16}(E)$	24	#15	5.26	—
$h_{17}(E)$	14	#15	7.15	—
$h_{18}(E)$	12	#15	6.18	—
$h_{19}(E)$	32	#15	1.00	—
$h_{20}(E)$	8	#20	6.30	—
$h_{21}(E)$	4	#15	7.05	—
$n_1(E)$	200	#25	2.38	—
$p(E)$	22	#25	11.84	—
$s_1(E)$	78	#15	3.80	—
$t_2(E)$	278	#20	2.68	—
$v_1(E)$	80	#25	3.54	—
$v_2(E)$	80	#25	3.40	—
$v_3(E)$	16	#15	4.91	—
$v_4(E)$	16	#15	4.76	—
$v_5(E)$	72	#15	3.05	—
$v_6(E)$	72	#15	3.02	—
$v_7(E)$	216	#15	0.76	—
$v_8(E)$	84	#15	1.54	—
$v_9(E)$	32	#15	5.28	—
$v_{10}(E)$	28	#15	4.84	—
$v_{11}(E)$	25	#15	1.98	—
$w_1(E)$	20	#15	12.50	—
$w_2(E)$	18	#25	12.50	—
Concrete Structures		m <sup>3</sup>	172.7	
Reinforcement Bars, Epoxy Coated		kg	13710	
Structure Excavation		m <sup>3</sup>	294	
Furnishing Steel Piles HP 200x54		m	247.1	
Furnishing Steel Piles HP 310x79		m	548.0	
Driving Piles		m	795.1	
Test Piles Steel HP 200x54		Each	2	
Form Liner		m <sup>2</sup>	52	
Textured Surface		m <sup>3</sup>	2.4	
Concrete Encasement		m <sup>3</sup>	2.4	

Notes:  
Reinforcement bars designated (E) shall be epoxy coated.

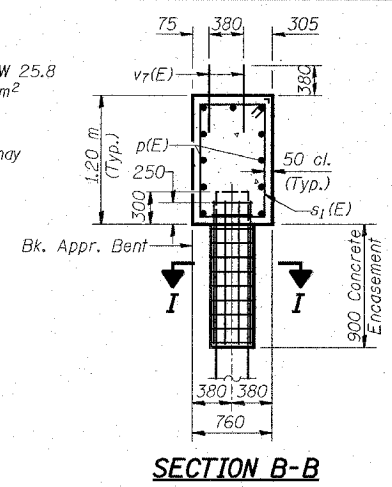


**SECTION A-A**

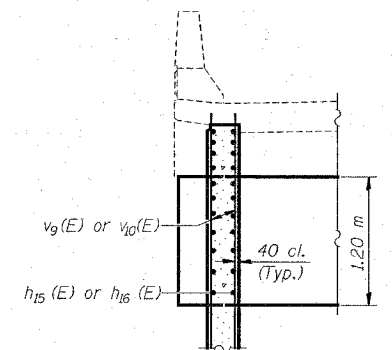


**SECTION I-I**

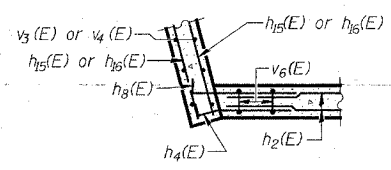
**PILE ENCASEMENT DETAIL**



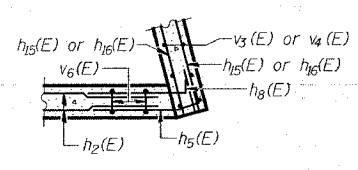
**SECTION B-B**



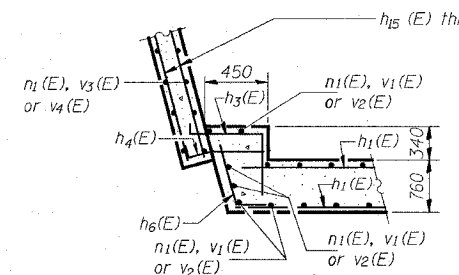
**SECTION C-C**



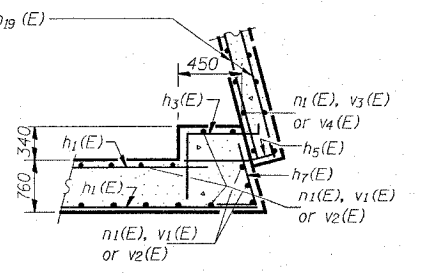
**SECTION D-D**



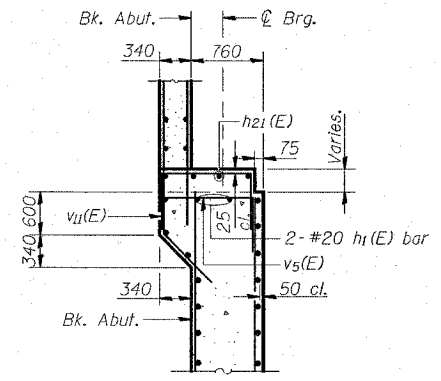
**SECTION E-E**



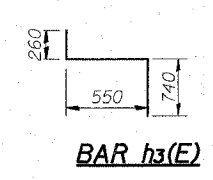
**SECTION F-F**



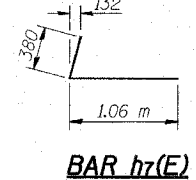
**SECTION G-G**



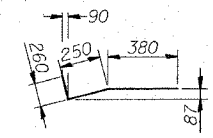
**SECTION H-H**



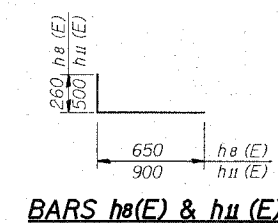
**BAR h3(E)**



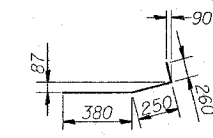
**BAR h7(E)**



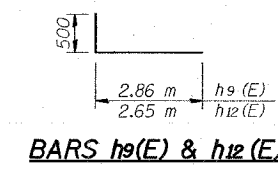
**BAR h4(E)**



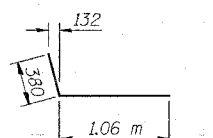
**BARS h8(E) & h11(E)**



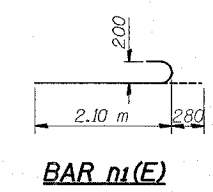
**BAR h5(E)**



**BARS h9(E) & h12(E)**



**BAR h6(E)**



**BAR n1(E)**

**FIELD CUTTING DIAGRAM**

Bar	Length (m)	Bar	Length (m)
$h_{17}(E)$ bars	6 Eq. Spa. S. Abut.	$v_9(E)$ bars	15 Eq. Spa. S. Abut.
$h_{18}(E)$ bars	5 Eq. Spa. N. Abut.	$v_{10}(E)$ bars	13 Eq. Spa. N. Abut.
$v_9(E)$ bars	15 Eq. Spa. S. Abut.		
$v_{10}(E)$ bars	13 Eq. Spa. N. Abut.		
$v_9(E)$	1.50 m	$h_{17}(E)$	3.78 m
$v_{10}(E)$	1.60 m	$h_{18}(E)$	3.24 m
$h_{17}(E)$	1.65 m	$v_9(E)$	5.48 m
$h_{18}(E)$	1.38 m	$v_{10}(E)$	4.80 m
$v_9(E)$	1.50 m		
$v_{10}(E)$	1.60 m		
$h_{17}(E)$	1.65 m		
$h_{18}(E)$	1.38 m		

REVISIONS	
NO.	DESCRIPTION

**LIN ENGINEERING, LTD.**  
20 N. Chestnut  
Channah, Illinois 61829  
Tel: (618) 433-6100  
Fax: (618) 433-6106  
Designed By: MTH Checked By: PBC Drawn By: JAO  
Date: 02/03 File: 0602306.DWG

ILLINOIS DEPARTMENT OF TRANSPORTATION  
**ABUTMENT DETAILS**  
WENZEL ROAD OVER F.A.P. RTE. 310  
SECTION 60-15HB  
MADISON COUNTY  
STA. 36+335.990 (FAP 310)  
STA. 10+000.000 (WENZEL ROAD)  
STRUCTURE NO. 060-0306