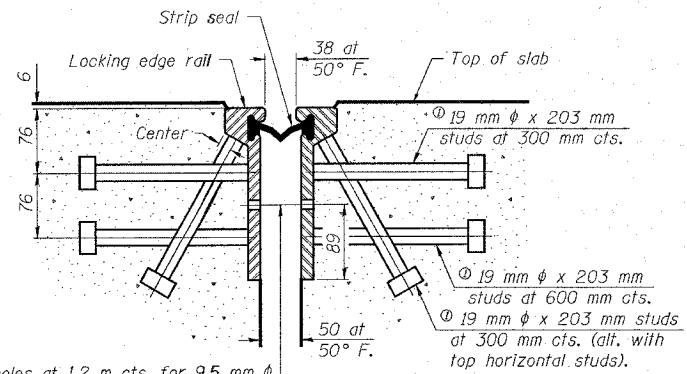


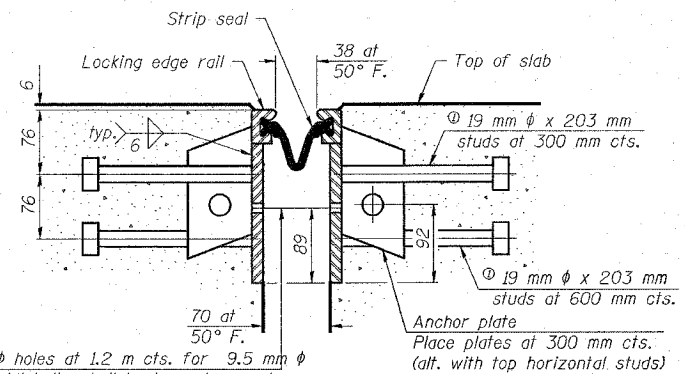
ROUTE NO.	SECTION	COUNTY	TOTAL SHEETS	SHEET NO.	SHEET NO. 16 20 SHEETS
F.A.P. 310	60-15HB	MADISON	185	91	
FED. ROAD DIST. NO.	ILLINOIS	FED. AID PROJECT	CONTRACT NO. T6626		

⊙ Granular or solid flux filled headed studs conforming to Article 1006.32 of the Std. Specs., automatically end welded.



11 mm  $\phi$  holes at 1.2 m cts. for 9.5 mm  $\phi$  bolts. All bolts shall be burned, sawed, or chipped off flush with the plates after forms are removed, typ.

**SECTION THRU ROLLED RAIL JOINT**



11 mm  $\phi$  holes at 1.2 m cts. for 9.5 mm  $\phi$  bolts. All bolts shall be burned, sawed, or chipped off flush with the plates after forms are removed, typ.

**SECTION THRU WELDED RAIL JOINT**

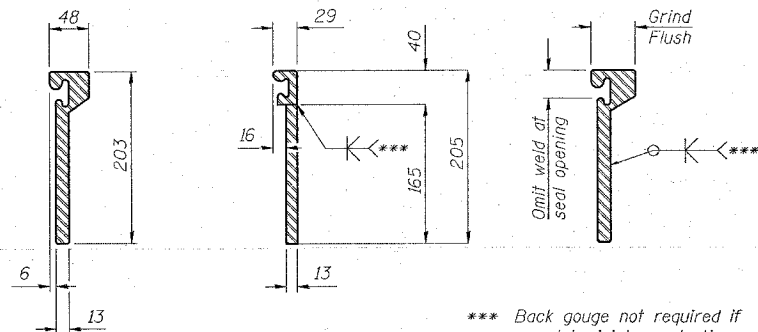
**Notes:**

The strip seal shall be made continuous and shall have a minimum thickness of 6 mm. The configuration of the strip seal shall match the configuration of the Locking Edge Rails. Open or "webbed" strip seal gland configurations are not permitted. The gland shall be sized for a maximum rated movement of 102 mm.

The height and thickness of the Locking Edge Rails shown are minimum dimensions. The actual configuration of the Locking Edge Rails and matching strip seal may vary from manufacturer to manufacturer. Flanged edge rails will not be allowed. Locking Edge Rails may be spliced at slope discontinuities and stage construction joints.

The manufacturer's recommended installation methods shall be followed. The joint opening and deck dimensions detailed on the superstructure are based on a rolled rail expansion joint. If the Contractor elects to use the welded rail expansion joint, the opening and deck dimensions shall be modified according to the dimensions detailed on this sheet. Required modifications shall be made at no additional cost to the State.

All steel components shall be galvanized after fabrication according to Article 520.03 of the Standard Specifications.

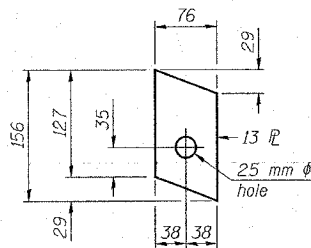


\*\*\* Back gouge not required if complete joint penetration is verified by mock-up.

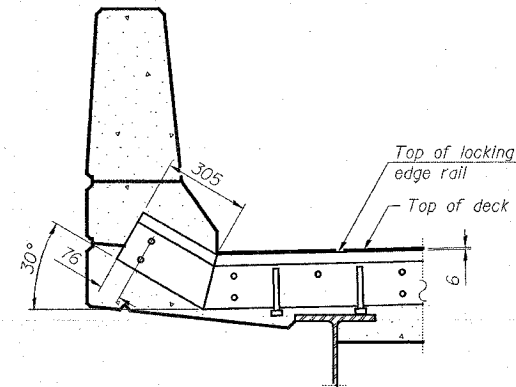
**ROLLING EDGE RAIL SPLICE**

The inside of the locking edge rail groove shall be free of weld residue.

**LOCKING EDGE RAILS**



**ANCHOR PLATE (for welded rail)**



**AT PARAPET END TREATMENT**

**BILL OF MATERIAL**

Item	Unit	Total
Preformed Joint Strip Seal	m	23.0

**LIN ENGINEERING, LTD.**  
 20 N. Chestnut  
 6171-483-488  
 Chicago, Illinois 60629  
 FAX 6171-483-4106  
 Designed By: JTV Checked By: PRC Drawn By: JMD  
 Date: 02/03 File: 060306.DWG

REVISIONS
NAME

ILLINOIS DEPARTMENT OF TRANSPORTATION  
**PREFORMED JOINT STRIP SEAL**  
 WENZEL ROAD OVER F.A.P. RTE 310  
 SECTION 60-15HB  
 MADISON COUNTY  
 STA. 36+335.990 (FAP 310)  
 STA. 10+000.000 (WENZEL ROAD)  
 STRUCTURE NO. 060-0306