

76B06

P. A. P. NO.	SECTION	COUNTY	TOTAL SHEETS	SHEET NO.
789	1RS-1	MADISON	26	1
STA.	TO STA.			
EXISTING CONDITIONS:				

STATE OF ILLINOIS
DEPARTMENT OF TRANSPORTATION

DIVISION OF HIGHWAYS

**PROPOSED
HIGHWAY PLANS**

FAP ROUTE 789 (IL 3)

SECTION 1RS-1

~~PROJECT~~

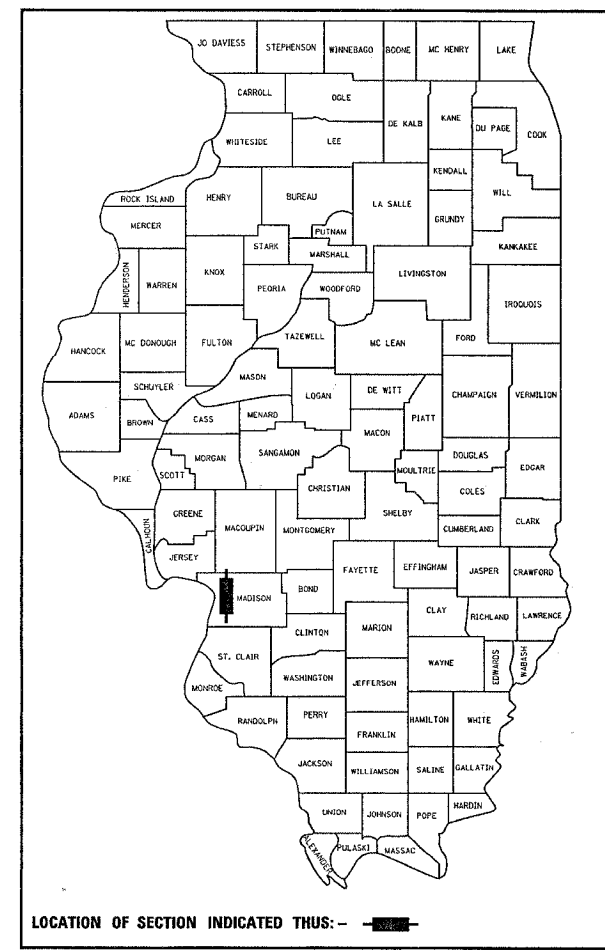
**MILLING AND RESURFACING
MADISON COUNTY**

C-98-084-07

FOR INDEX OF SHEETS, SEE SHEET NO. 2

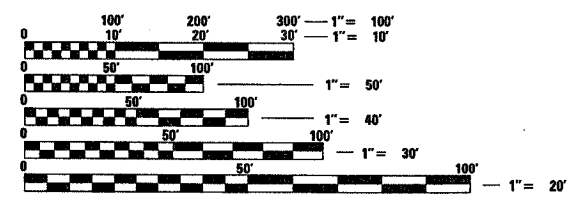
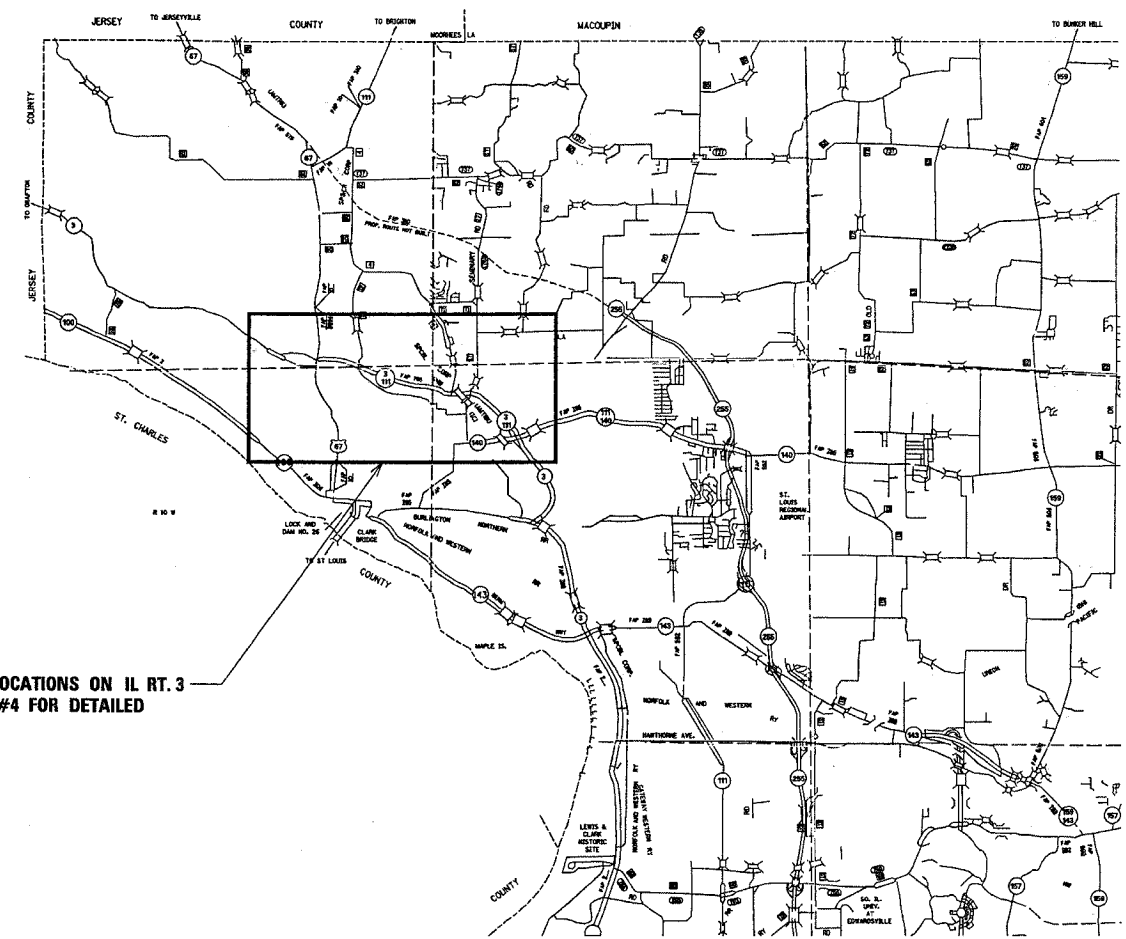
PLAN	DATE	BY
SUBMITTED		
ADMITTED		
CHECKED		
PT. OF WAY CHECKED		
GOOD FILE NAME		

D-98-080-07



LOCATION OF SECTION INDICATED THUS: - [black rectangle] -

PROJECT ENGINEER: PATTI LEBEAU 618-346-3179
SQUAD LEADER: TIM PADGETT 618-346-3284



THIS PROJECT CONSISTS OF 3 LOCATIONS ON IL RT. 3
IN ALTOINGODFREY. SEE SHEET #4 FOR DETAILED
INFORMATION

FULL SIZE PLANS HAVE BEEN PREPARED USING STANDARD
ENGINEERING SCALES. REDUCED SIZED PLANS WILL NOT
CONFORM TO STANDARD SCALES. IN MAKING MEASUREMENTS
ON REDUCED PLANS, THE ABOVE SCALES MAY BE USED.

J.U.L.I.E.
JOINT UTILITY LOCATION INFORMATION FOR EXCAVATION
1-800-892-0123

CONTRACT NO. 76B06

SCALE: 1" = 3 MILES

GROSS LENGTH: 17930 FT. (3.40 MI.)
NET LENGTH: 4779 FT. (0.91 MI.)

STATE OF ILLINOIS
DEPARTMENT OF TRANSPORTATION
DIVISION OF HIGHWAYS

SUBMITTED April 5 20 07
Mary C. Lemie
DEPUTY DIRECTOR OF HIGHWAYS
REGION FIVE ENGINEER

May 11 20 07
Eric E. Harvill
ENGINEER OF DESIGN AND ENVIRONMENT

May 11 20 07
Milton R. Sorensen, P.E.
DIRECTOR, DIVISION OF HIGHWAYS

**PRINTED BY THE AUTHORITY
OF THE STATE OF ILLINOIS**