

F.A.P. RTE.	SECTION	COUNTY	TOTAL SHEETS	SHEET NO.
*	**	***	14	1

* FAP 829 / 785 / 312
 ** DIST. 8 FLASHING BEACONS 2008-1
 *** MONROE & MADISON
D-98-100-07

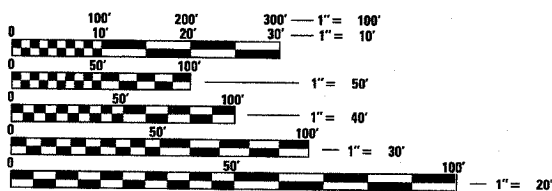
INDEX OF SHEETS

- 1 COVER SHEET
- 2 GENERAL NOTES & DETAILS
- 3 SUMMARY OF QUANTITIES
- 4-6 PLANS-IL 156
- 7-8 PLANS-IL 140
- 9-13 PLANS-IL 3
- 14 DETAILS AND SIGNS

STANDARDS

- 701006-02
- 701301-02
- 701901
- 805001
- 814001- 01
- 873001-01
- 878001-06
- 880001
- 880006

MICROFILMED _____
 REEL NUMBER _____
 AWARDED _____
 RESIDENT ENGINEER _____
 AS BUILT CHANGES WERE MADE
 ON THE FOLLOWING SHEETS



FULL SIZE PLANS HAVE BEEN PREPARED USING STANDARD ENGINEERING SCALES. REDUCED SIZED PLANS WILL NOT CONFORM TO STANDARD SCALES. IN MAKING MEASUREMENTS ON REDUCED PLANS, THE ABOVE SCALES MAY BE USED.

J.U.L.I.E.
 JOINT UTILITY LOCATION INFORMATION FOR EXCAVATION
 1-800-892-0123

CONTRACT NO. 76B25

STATE OF ILLINOIS
DEPARTMENT OF TRANSPORTATION
DIVISION OF HIGHWAYS
PROPOSED
HIGHWAY PLANS

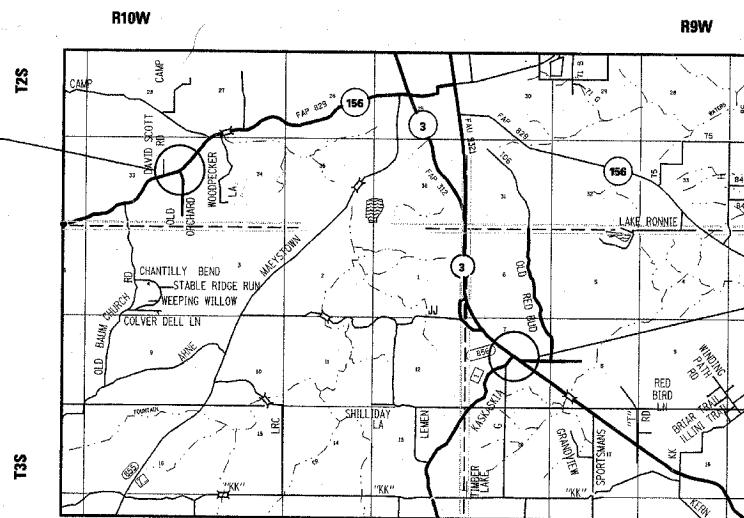
FAP ROUTE 829 / 785 / 312 (IL 156 / IL 140 / IL 003)
SECTION DIST. 8 FLASHING BEACONS 2008-1
PROJECT: ACHSIP-0005(556)
MONROE / MADISON COUNTY
FLASHING BEACONS
C-98-104-07



LOCATION OF SECTION INDICATED THIS: - [Symbol]



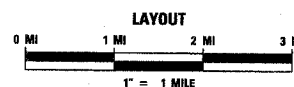
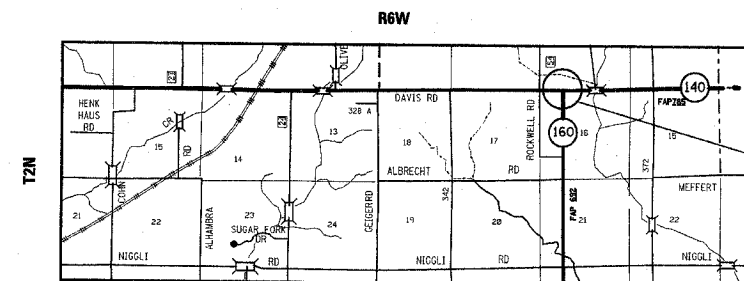
IL-156 @ OLD ORCHARD LN
 ROAD DISTRICT 6



IL-3 @ KASKASKIA RD. & OLD RED BUD RD.
 ROAD DISTRICT 3

2008 ADT (ESTIMATED)	
FAP 829	IL 156- 2000
FAP 785	IL 140- 2800 (EB)
	IL 140- 1850 (WB)
	IL 160- 1750
FAP 312	IL 3- 8500 (NB)
	IL 3- 11,700 (SB)
	KASKASKIA RD.- 3100

IL-140 @ IL-160



STATE OF ILLINOIS
 DEPARTMENT OF TRANSPORTATION
 DIVISION OF HIGHWAYS

SUBMITTED Oct 4 2007
May C. James
 DEPUTY DIRECTOR OF HIGHWAYS
 REGION FIVE ENGINEER

December 7, 2007
Eric E. Harn
 ENGINEER OF DESIGN AND ENVIRONMENT

December 7, 2007
Christine M. Reed
 DIRECTOR, DIVISION OF HIGHWAYS

**PRINTED BY THE AUTHORITY
 OF THE STATE OF ILLINOIS**

PROJECT ENGINEER: PATT LeBEAU (618) 346-3179
 SQUAD LEADER: BHARAT PATEL (618) 346-3190

F.A. RTE.	SECTION	COUNTY	TOTAL SHEETS	SHEET NO.
*	**	***	14	2
STA.		TO STA.		
FED. ROAD DIST. NO.	ILLINOIS	FED. AID PROJECT		

- * FAP 829 / 785 / 312
- ** DIST. 8 FLASHING BEACONS 2008-1
- *** MONROE & MADISON

ELECTRICAL GENERAL NOTES

1. ALL VEHICLE SIGNAL HEADS SHALL HAVE 12" SECTION. MOUNTING HARDWARE SHALL BE UNPAINTED ALUMINUM. ALL BOLTS, SCREWS, NUTS AND WASHERS SHALL BE STAINLESS STEEL. ANTI- SEIZE PASTE COMPOUND SHALL BE USED ON ALL MOUNTING HARDWARE FIELD CONNECTIONS.
2. THE CONTROLLER CABINET SHALL BE UNPAINTED ALUMINUM.
3. ALL TRAFFIC SIGNAL CABLES SHALL BE #14 AWG STRANDED COPPER UNLESS OTHERWISE SPECIFIED. TERMINAL ENDS SHALL HAVE CRIMPED -ON RING TONGUE CONNECTORS.
4. SLOPE HANDHOLE COVERS TO MATCH EXISTING GRADE.
5. ILLINOIS STATE LAW REQUIRES A 48 HOUR NOTICE BE GIVEN TO UTILITIES BEFORE DIGGING. FIELD MARKING OF FACILITIES MAY BE OBTAINED BY CONTACTING JULIE OR FOR NONMEMBERS, THE UTILITY COMPANY DIRECTLY. AGENCIES KNOWN TO HAVE FACILITIES WITHIN THE PROJECT AREA ARE AS FOLLOWS:

IL 156 @ OLD ORCHARD LANE

- FOUNTAIN WATER DISTRICT
- HARRISONVILLE TELEPHONE
- AMEREN IP
- MONROE COUNTY ELECTRIC
- MCI

IL 140 @ IL 160

- ALHAMBRA-GRANTFORK TELEPHONE
- GRANTFORK, VILLAGE OF
- SOUTH WESTERN ELECTRIC CO.





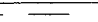




IL 3 @ KASKASKIA ROAD

- A. T. & T.
- FOUNTAIN WATER DISTRICT
- HARRISONVILLE TELEPHONE
- MONROE COUNTY ELECTRIC
- MISSISSIPPI RIVER GAS

(MEMBERS OF J.U.L.I.E. PHONE (800) - 892-0123 ARE INDICATED BY *)
NON-J.U.L.I.E. MEMBERS MUST BE NOTIFIED INDIVIDUALLY.

6. THE CONTRACTOR SHALL DELIVER REMOVED SIGN ASSEMBLY -TYPE AS SPECIFIED, TO THE ILLINOIS DEPARTMENT OF TRANSPORTATION, TRAFFIC AND MAINTENANCE YARD, 9601 ST. CLAIR AVE., FAIRVIEW HEIGHTS, ILLINOIS.
7. SOUTH WESTERN ELECTRIC UTILITY CO., ACCORDING TO THEIR REQUIREMENTS, WILL PROVIDE SERVICE INSTALLATION INCLUDING SERVICE -POLE (30'), METER, DISCONNECT (100 AMP.), AND A GROUND ROD AT THE INTERSECTION OF IL-140 AND IL-160. ANY CHARGES BY THE UTILITY COMPANY TO PROVIDE ELECTRIC SERVICE WILL BE PAID FOR ACCORDING TO ARTICLE 109.05. THE CONTRACTOR SHALL INSTALL A FLASHER CONTROLLER ON THE SERVICE POLE AS SHOWN ON THE PLANS.
8. COORDINATION WITH THE DEPARTMENT'S BUREAU OF OPERATIONS IS REQUIRED BEFORE ANY TRENCHING SHALL BE DONE TO LOCATE HIGHWAY LIGHTING/PUMP STATION/INTELLIGENT TRANSPORTATION SYSTEM FACILITIES AND TO COORDINATE OTHER FIELD ACTIVITIES.
9. AN UNDERGROUND "CABLE MARKING TAPE" SHALL BE INSTALLED WITH ALL TRENCH & BACKFILL IN ACCORDANCE WITH ARTICLE 1066.05 OF THE STANDARD SPECIFICATIONS.
10. A 9-1-1 ADDRESSES FOR ELECTRICAL SERVICE AT A DESIGNATED LOCATION ARE AS FOLLOWS:
 - IL 156 @ OLD ORCHARD LN., MONROE CO. (WB) - 3585 St Rt 156
 - IL 156 @ OLD ORCHARD LN., MONROE CO. (EB) - 3476 St Rt 156
 - IL 140 @ IL 160, MADISON CO. - 03-1-12-16-00-000-002
 - IL 3 @ KASKASKIA RD., MONROE CO. - 6227 St Rt 3
11. THE CONTRACTOR SHALL INSTALL PROPOSED FLASHING BEACONS IN PLACE AND TURN ON BEFORE REMOVING SIGN PANEL -TYPE A OR TYPE B AT EACH LOCATION.

TRAFFIC SIGNALS LEGEND

- ATS ATTACHED TO STRUCTURE
- GSC GALVANIZED STEEL CONDUIT
- PVCC POLYVINYL CHLORIDE CONDUIT
-  EXISTING ROADWAY TRAFFIC SIGN
-  PROPOSED HANDHOLE
-  PROPOSED CONTROLLER
-  PROPOSED SERVICE INSTALLATION
-  PROPOSED CONDUIT: "T" TRENCH, "P" PUSH, SIZE SPECIFIED
-  PROPOSED FLASHING BEACON ON SIGNAL POST / WOOD POST
-  PROPOSED WIG - WAG FLASHING BEACON ON SIGNAL POST
-  PROPOSED WOOD SIGN POST (4' X 6")
-  PROPOSED POST MOUNTED SIGN PANEL, MESSAGE AS SPECIFIED

COMMITMENTS: NONE

PLOT DATE = 8/20/08
FILE NAME = 8/15/08
PLOT SCALE = 1/8"=1'-0"
USER NAME = JUSBERN

REVISIONS	
NAME	DATE

ILLINOIS DEPARTMENT OF TRANSPORTATION
GENERAL NOTES AND LEGEND
FAP ROUTE 829 / 785 / 312
SECTION DIST. 8 FLASHING BEACONS 2008-1
COUNTY MONROE & MADISON

SCALE: VERT. _____
HORIZ. _____
DATE _____ DRAWN BY _____
CHECKED BY _____

SUMMARY OF QUANTITIES

*...EAP_829_7_785_7_312
**...DIST_8_FLASHING_BEACONS_2008-1
***...MONROE_&_MADISON

F.A. RTE.	SECTION	COUNTY	TOTAL SHEETS	SHEET NO.
*	**	***	14	3
STA.		TO STA.		
FED. ROAD DIST. NO. ILLINOIS FED. AID PROJECT				

SUMMARY OF QUANTITIES			TOTAL QUANTITIES	CONSTRUCTION TYPE CODE - Y031-IF		
CODE NO	ITEM	UNIT		IL 156 MONROE CO.	IL 4 MADISON CO.	IL 003 MONROE CO.
67100100	MOBILIZATION	L SUM	1	0.3	0.3	0.4
*72000100	SIGN PANEL - TYPE 1	SQ FT	36.5	20	4.5	12
*72000200	SIGN PANEL - TYPE 2	SQ FT	112	32	16	64
*72400100	REMOVE SIGN PANEL ASSEMBLY - TYPE A	EACH	5	2		3
*72400200	REMOVE SIGN PANEL ASSEMBLY - TYPE B	EACH	1		1	
*73000100	WOOD SIGN SUPPORT	FOOT	51		17	34
80500100	SERVICE INSTALLATION, TYPE A	EACH	3	2		1
81012500	CONDUIT IN TRENCH, 1 1/2" DIA., PVC	FOOT	1881	20	10	1851
81018400	CONDUIT PUSHED, 1 1/2" DIA., GALVANIZED STEEL	FOOT	180			180
81100500	CONDUIT ATTACHED TO STRUCTURE, 1 1/2" DIA., GALVANIZED STEEL	FOOT	72	16	20	36
81400700	HANDHOLE, PORTLAND CEMENT CONCRETE	EACH	10			10
81900200	TRENCH AND BACKFILL FOR ELECTRICAL WORK	FOOT	1881	20	10	1851
85800100	FLASHER CONTROLLER	EACH	4	2	1	1
87301225	ELECTRIC CABLE IN CONDUIT, SIGNAL NO. 14 3C	FOOT	770		40	730
87301245	ELECTRIC CABLE IN CONDUIT, SIGNAL NO. 14 5C	FOOT	2155	90		2065
87502680	TRAFFIC SIGNAL POST, ALUMINUM 14 FT.	EACH	1	1		
87502700	TRAFFIC SIGNAL POST, ALUMINUM 16 FT.	EACH	2			2
87502720	TRAFFIC SIGNAL POST, ALUMINUM 18 FT.	EACH	1	1		
87800100	CONCRETE FOUNDATION, TYPE A	FOOT	12	6		6
88040020	SIGNAL HEAD, POLYCARBONATE, LED, 1-FACE, 1-SECTION, BRACKET MOUNTED	EACH	11	4	1	6
X0323153	ELECTRIC CABLE IN CONDUIT, GROUND, NO. 6 1C (GREEN)	FOOT	2258		40	2218

SUMMARY OF QUANTITIES			TOTAL QUANTITIES	CONSTRUCTION TYPE CODE		
CODE NO	ITEM	UNIT		IL 156	IL_140	IL_003

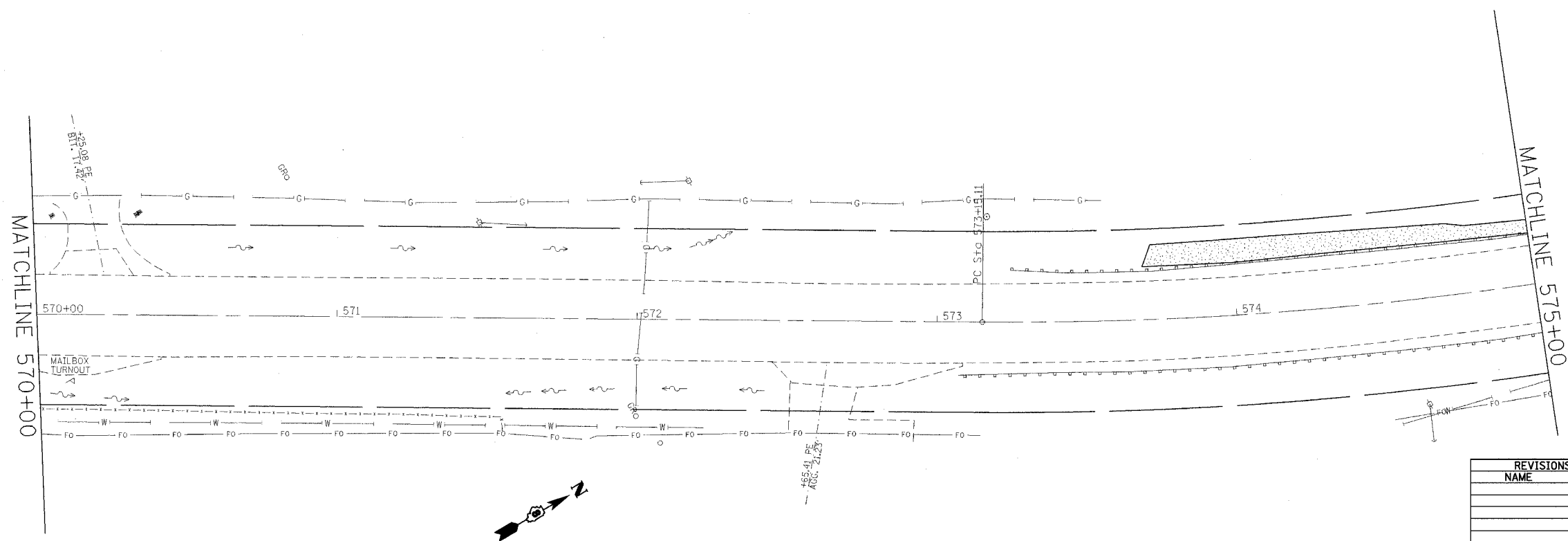
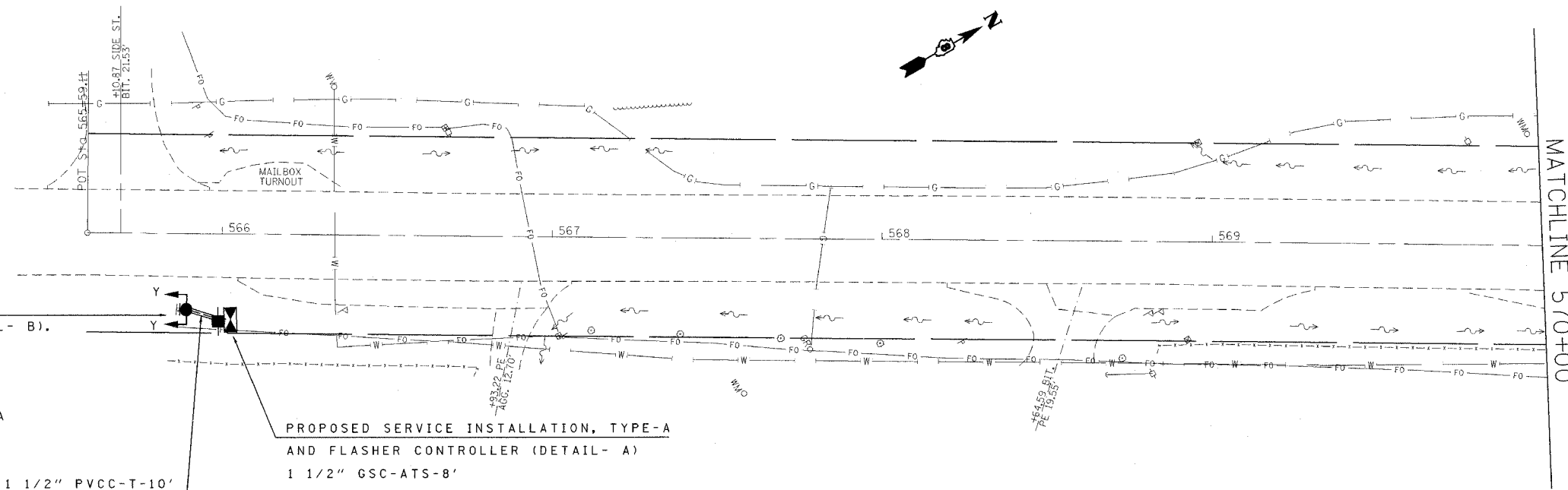
*SPECIALTY ITEMS

FED. - 90%
STATE - 10%

PLT DATE = 10/1/2007
PLT SCALE = 50.00000
REFERENCE = #REF#

F.A. RTE.	SECTION	COUNTY	TOTAL SHEETS	SHEET NO.
*	**	***	14	4
STA. _____		TO STA. _____		
FED. ROAD DIST. NO. _____		ILLINOIS FED. AID PROJECT		

* EAP_829_785_312
 ** DIST_8_FLASHING_BEACONS_2008-1
 *** MONROE & MADISON

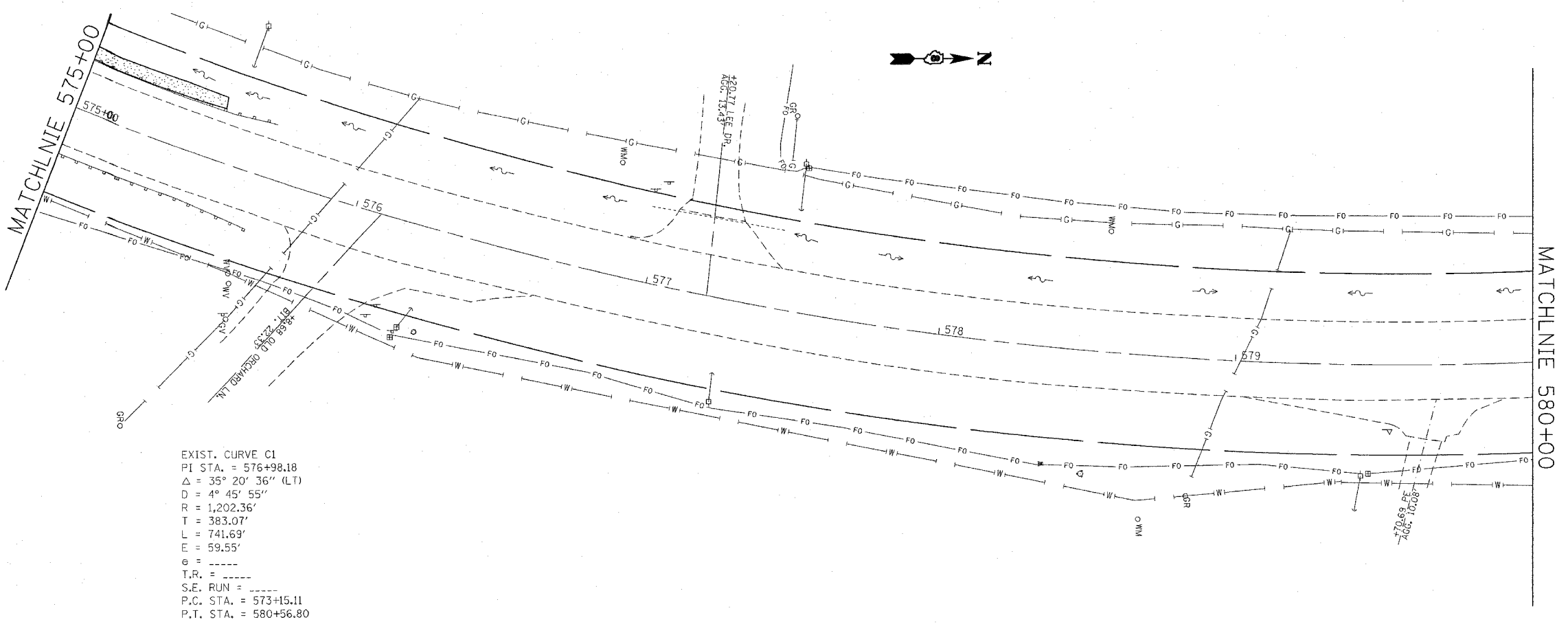


REVISIONS		ILLINOIS DEPARTMENT OF TRANSPORTATION	
NAME	DATE	PLAN VIEW - IL 156	
		FAP ROUTE 829 / 785 / 312	
		SECTION DIST. 8 FLASHING BEACONS 2008-1	
		COUNTY MONROE & MADISON	
		SCALE: VERT. _____	DRAWN BY _____
		DATE _____	CHECKED BY _____

PLOT DATE = 10/1/2007
 FILE NAME = c:\projects\110807\electrical\110807.dwg
 PLOTTER = HP DesignJet 5000
 PLOT SCALE = 1" = 20'
 REFERENCE = #REF#

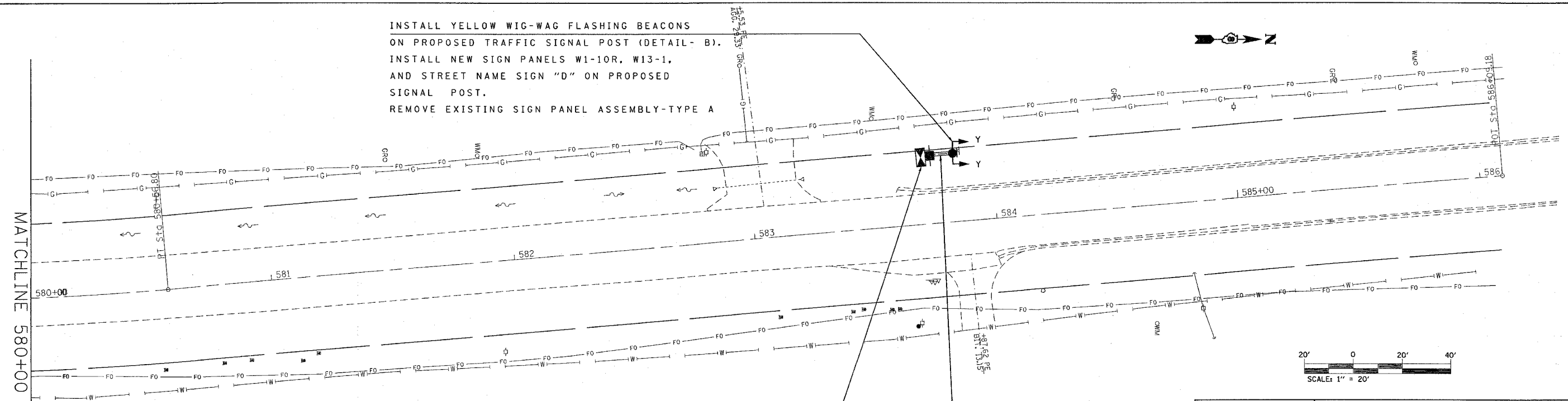
F.A. RTE.	SECTION	COUNTY	TOTAL SHEETS	SHEET NO.
*	**	***	14	5
STA.		TO STA.		
FED. ROAD DIST. NO.	ILLINOIS	FED. AID PROJECT		

- * FAP 829 / 785 / 312
- ** DIST. 8 FLASHING BEACONS 2008-1
- *** MONROE & MADISON



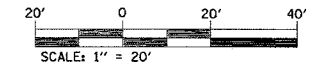
EXIST. CURVE C1
 PI STA. = 576+98.18
 $\Delta = 35^\circ 20' 36''$ (LT)
 $D = 4^\circ 45' 55''$
 $R = 1,202.36'$
 $T = 383.07'$
 $L = 741.69'$
 $E = 59.55'$
 $e = \text{-----}$
 $T.R. = \text{-----}$
 $S.E. RUN = \text{-----}$
 $P.C. STA. = 573+15.11$
 $P.T. STA. = 580+56.80$

INSTALL YELLOW WIG-WAG FLASHING BEACONS ON PROPOSED TRAFFIC SIGNAL POST (DETAIL- B).
 INSTALL NEW SIGN PANELS W1-10R, W13-1, AND STREET NAME SIGN "D" ON PROPOSED SIGNAL POST.
 REMOVE EXISTING SIGN PANEL ASSEMBLY-TYPE A



PROPOSED SERVICE INSTALLATION, TYPE-A AND FLASHER CONTROLLER (DETAIL- A)
 1 1/2" GSC-ATS-8'

1 1/2" PVCC-T-10'



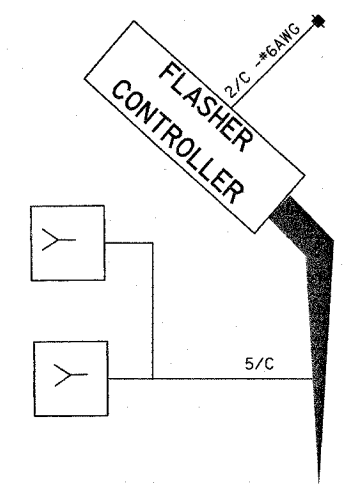
REVISIONS	
NAME	DATE

ILLINOIS DEPARTMENT OF TRANSPORTATION
PLAN VIEW - IL 156
 FAP ROUTE 829 / 785 / 312
 SECTION DIST. 8 FLASHING BEACONS 2008-1
 COUNTY MONROE & MADISON
 SCALE: VERT. _____
 HORIZ. _____
 DATE _____
 DRAWN BY _____
 CHECKED BY _____

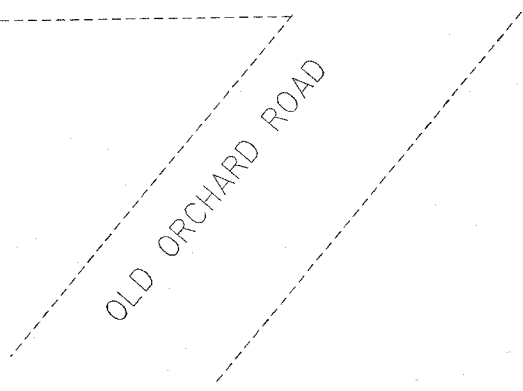
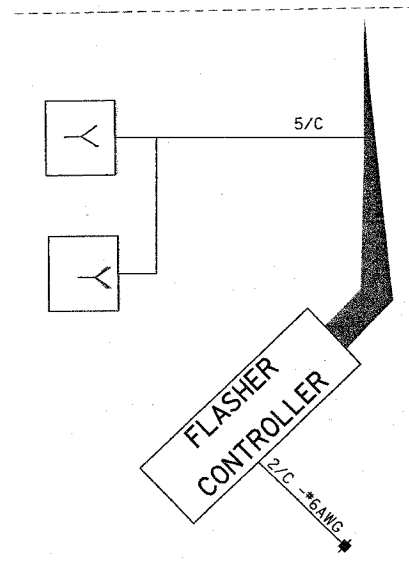
PLT DATE * DATE
 PLOT NAME * NAME
 PLOT SCALE * SCALE
 REFERENCE * REF

F.A. RTE.	SECTION	COUNTY	TOTAL SHEETS	SHEET NO.
•	**	***	14	6
STA.		TO STA.		
FED. ROAD DIST. NO.	ILLINOIS	FED. AID PROJECT		

- FAP 829 / 785 / 312
- DIST. 8 FLASHING BEACONS 2008-1
- MONROE & MADISON



IL RTE. 156



CABLE DIAGRAM LEGEND

- ELECTRIC CABLE IN CONDUIT
- 2/C INDICATES NUMBER OF CONDUCTORS IN CABLE
- SERVICE INSTALLATION
- *6 INDICATES AMERICAN WIRE GAUGE (AWG) SIZE 6 CONDUCTORS (SEE GENERAL NOTES)
- R SIGNAL HEAD; Y-YELLOW, R-RED

PLOT DATE = #DATE*
 FILE NAME = #FILE#*
 PLOT SCALE = #SCALE*
 USER NAME = #USER#

REVISIONS	
NAME	DATE

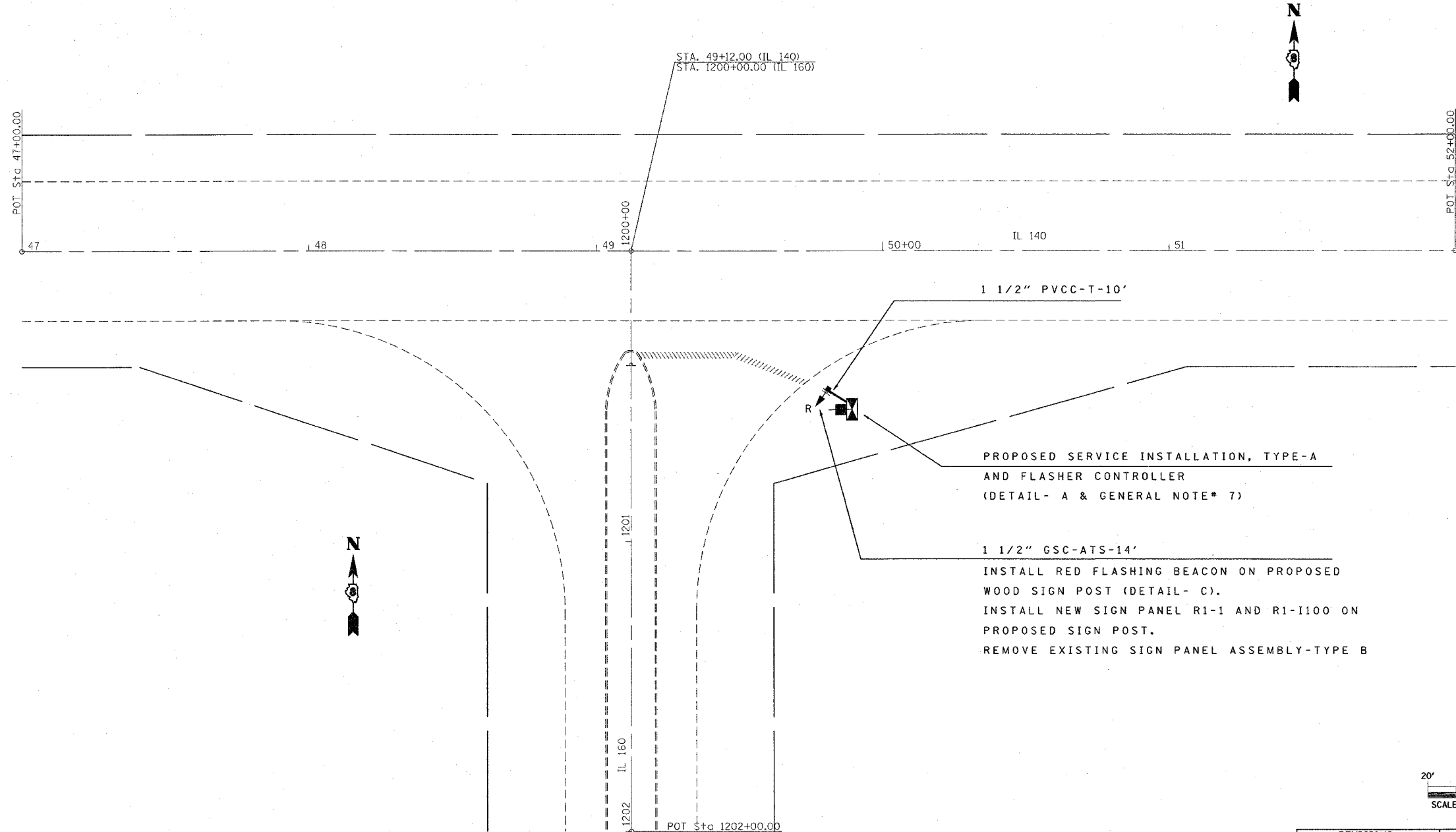
ILLINOIS DEPARTMENT OF TRANSPORTATION
CABLE DIAGRAM
 FAP ROUTE 829 / 785 / 312
 SECTION DIST. 8 FLASHING BEACONS 2008-1
 COUNTY MONROE & MADISON
 IL 156 @ OLD ORCHARD ROAD

SCALE: VERT. _____
 HORIZ. _____

DATE _____ DRAWN BY _____
 CHECKED BY _____

F.A. RTE.	SECTION	COUNTY	TOTAL SHEETS	SHEET NO.
*	**	***	14	7
STA.		TO STA.		
FED. ROAD DIST. NO.	ILLINOIS	FED. AID PROJECT		

- * FAP 829 / 785 / 312
- ** DIST. 8 FLASHING BEACONS 2008-1
- *** MONROE & MADISON

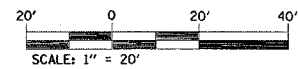


1 1/2" PVCC-T-10'

PROPOSED SERVICE INSTALLATION, TYPE-A
AND FLASHER CONTROLLER
(DETAIL- A & GENERAL NOTE* 7)

1 1/2" GSC-ATS-14'

INSTALL RED FLASHING BEACON ON PROPOSED
WOOD SIGN POST (DETAIL- C).
INSTALL NEW SIGN PANEL R1-1 AND R1-1100 ON
PROPOSED SIGN POST.
REMOVE EXISTING SIGN PANEL ASSEMBLY-TYPE B



PLOT DATE = #DATE*
FILE NAME = #FILE#*
PLOT SCALE = #SCALE*
REFERENCE = #REF#

REVISIONS	
NAME	DATE

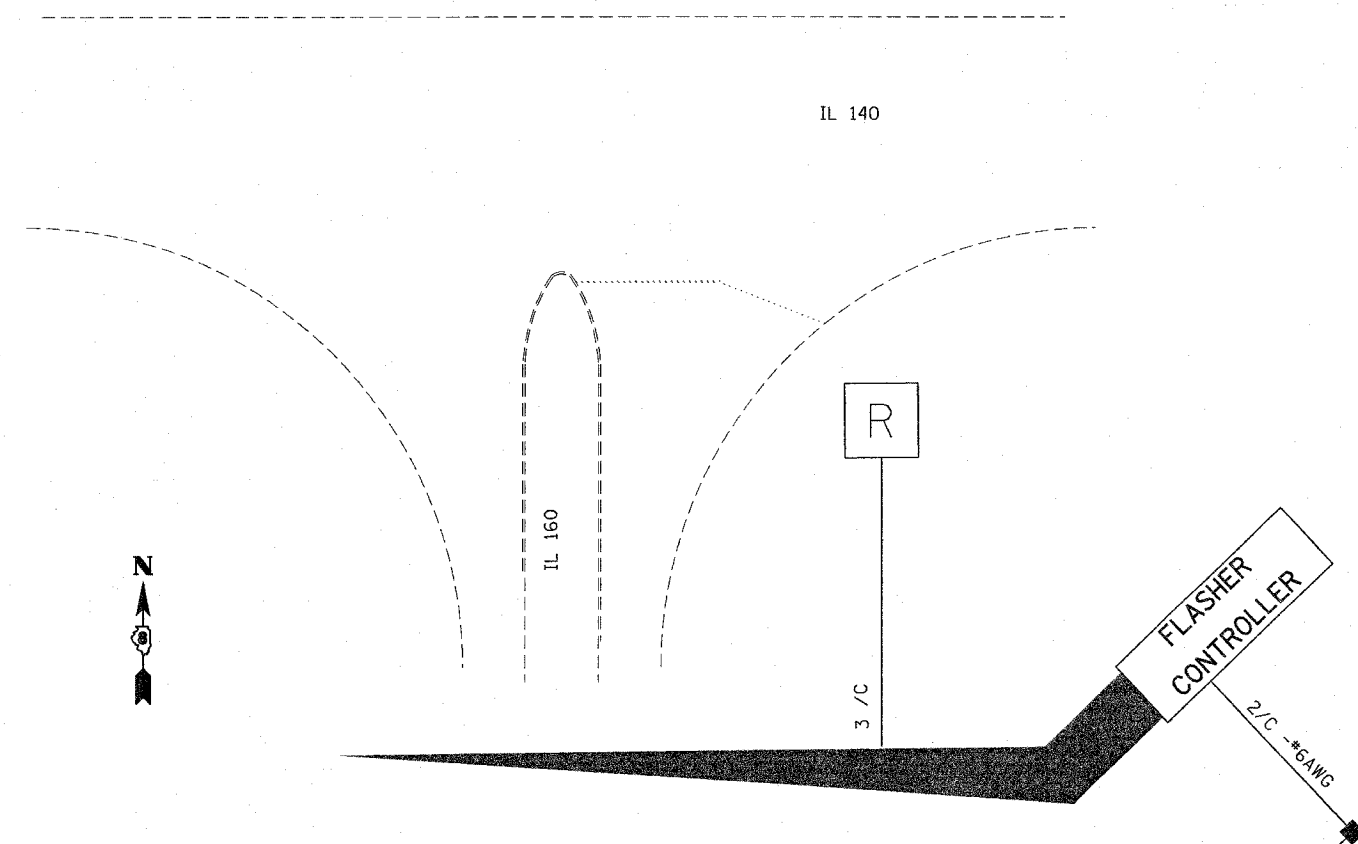
ILLINOIS DEPARTMENT OF TRANSPORTATION
PLAN VIEW - IL 140
FAP ROUTE 829 / 785 / 312
SECTION DIST. 8 FLASHING BEACONS 2008-1
COUNTY MONROE & MADISON

SCALE: VERT.
HORIZ.
DATE

DRAWN BY
CHECKED BY

F.A. RTE.	SECTION	COUNTY	TOTAL SHEETS	SHEET NO.
*	**	***	14	8
STA.			TO STA.	
FED. ROAD DIST. NO.		ILLINOIS	FED. AID PROJECT	

- * FAP 829 / 785 / 312
- ** DIST. 8 FLASHING BEACONS 2008-1
- *** MONROE & MADISON



CABLE DIAGRAM LEGEND

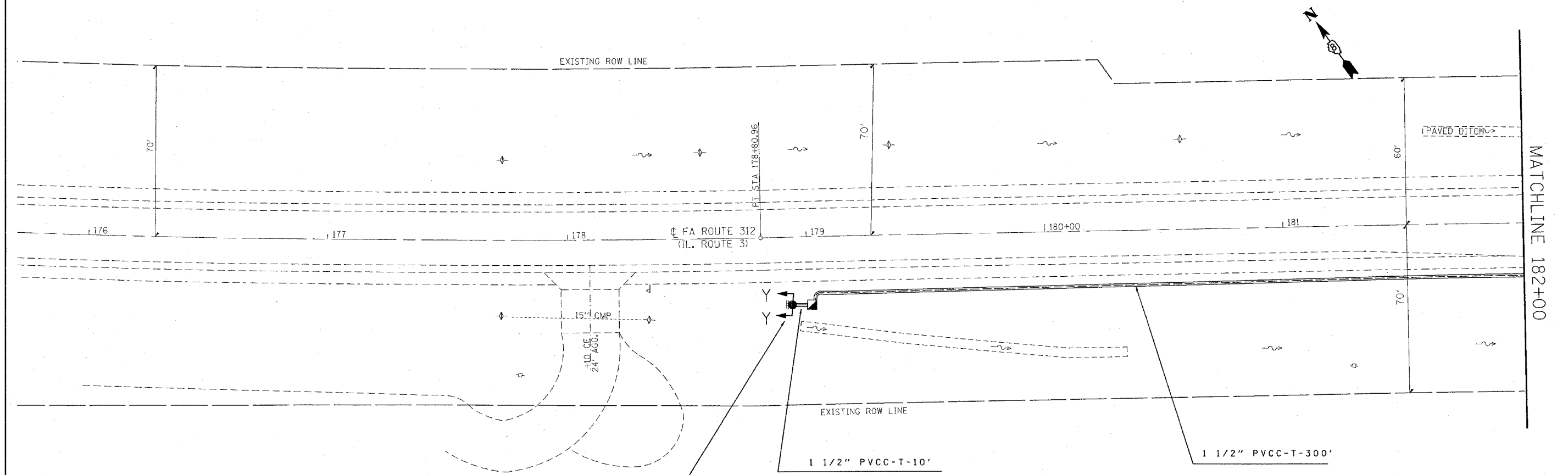
- ELECTRIC CABLE IN CONDUIT
- 2/C INDICATES NUMBER OF CONDUCTORS IN CABLE
- SERVICE INSTALLATION
- *6 INDICATES AMERICAN WIRE GAUGE (AWG) SIZE 6 CONDUCTORS (SEE GENERAL NOTES)
- R SIGNAL HEAD; Y-YELLOW, R-RED

REVISIONS		ILLINOIS DEPARTMENT OF TRANSPORTATION CABLE DIAGRAM - IL 140 @ IL 160 FAP ROUTE 829 / 785 / 312 SECTION DIST. 8 FLASHING BEACONS 2008-1 COUNTY MONROE & MADISON
NAME	DATE	
SCALE: VERT.		DRAWN BY
HORIZ.		CHECKED BY
DATE		

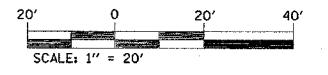
PLOT DATE = #DATE*
 FILE NAME = #FILE*
 PLOT SCALE = #SCALE*
 USER NAME = #USER*

F.A.P. RTE.	SECTION	COUNTY	TOTAL SHEETS	SHEET NO.
*	**	***	14	9
STA.		TO STA.		
FED. ROAD DIST. NO.	ILLINOIS	FED. AID PROJECT		

- * FAP 829 / 785 / 312
- ** DIST. 8 FLASHING BEACONS 2008-1
- *** MONROE & MADISON



INSTALL YELLOW WIG-WAG FLASHING BEACONS ON PROPOSED TRAFFIC SIGNAL POST-16' (DETAIL- B).
 INSTALL NEW SIGN PANEL W2-2R AND STREET NAME SIGN "E" ON PROPOSED SIGNAL POST.
 REMOVE EXISTING SIGN PANEL ASSEMBLY-TYPE A



PLOT DATE = #DATE#
 FILE NAME = #FILE#
 REFERENCE = #REF#

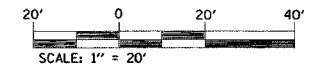
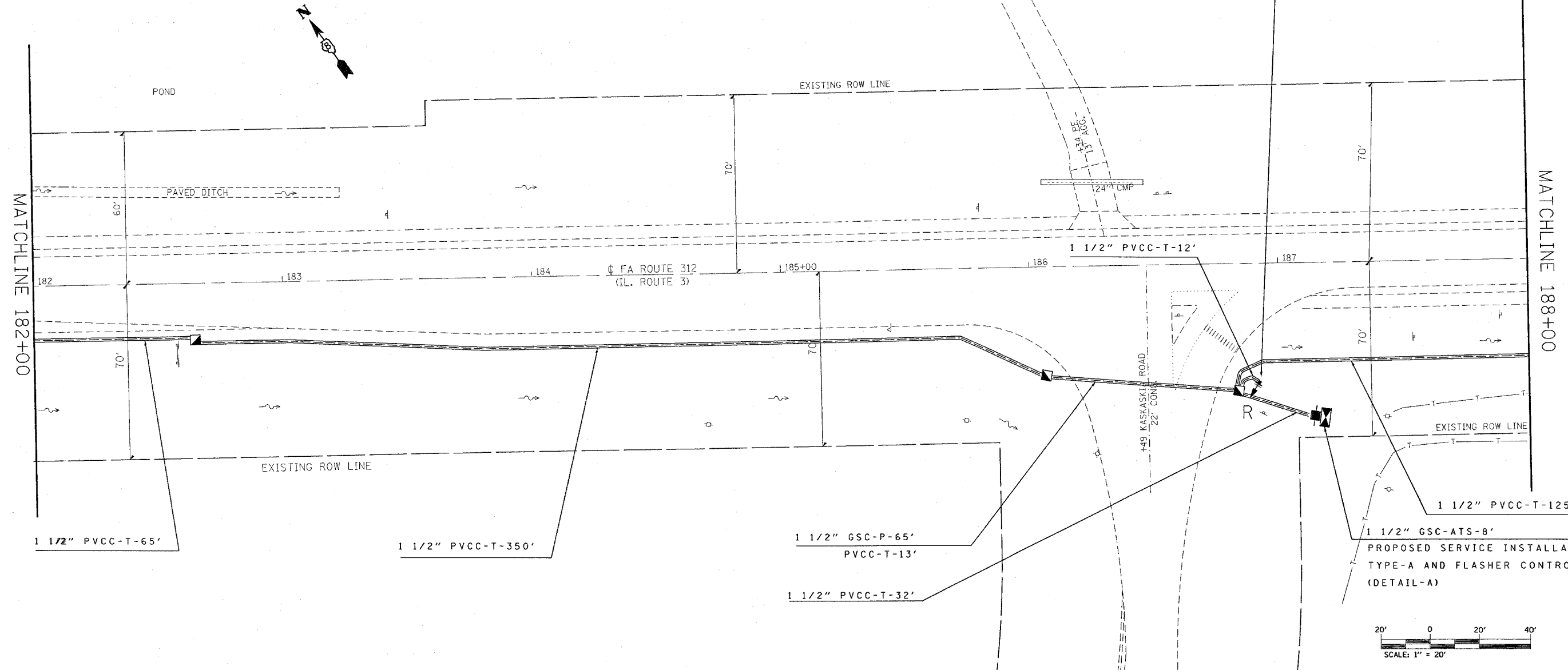
REVISIONS	
NAME	DATE

ILLINOIS DEPARTMENT OF TRANSPORTATION
PLAN VIEW - IL 3
 FAP ROUTE 829 / 785 / 312
 SECTION DIST. 8 FLASHING BEACONS 2008-1
 COUNTY MONROE & MADISON
 SCALE: VERT. _____
 DATE _____ HORIZ. _____
 DRAWN BY _____
 CHECKED BY _____

F.A. RTE.	SECTION	COUNTY	TOTAL SHEETS	SHEET NO.
*	**	***	14	10
STA.		TO STA.		
FED. ROAD DIST. NO.	ILLINOIS	FED. AID PROJECT		

- * FAP 829 / 785 / 312
- ** DIST. 8 FLASHING BEACONS 2008-1
- *** MONROE & MADISON

1 1/2" GSC-ATS-14'
 INSTALL RED FLASHING BEACON ON PROPOSED WOOD SIGN POST (DETAIL- C).
 INSTALL NEW SIGN PANEL R1-1 ON PROPOSED SIGN POST.
 REMOVE EXISTING SIGN PANEL ASSEMBLY- TYPE A



BM* 38 - RR SPIKE IN P.P. OF S.W. CORNER OF
 IL 3 AND KASKASKIA RD. STA. 187+47, 62' RT.; ELEV. 651.99

REVISIONS	
NAME	DATE

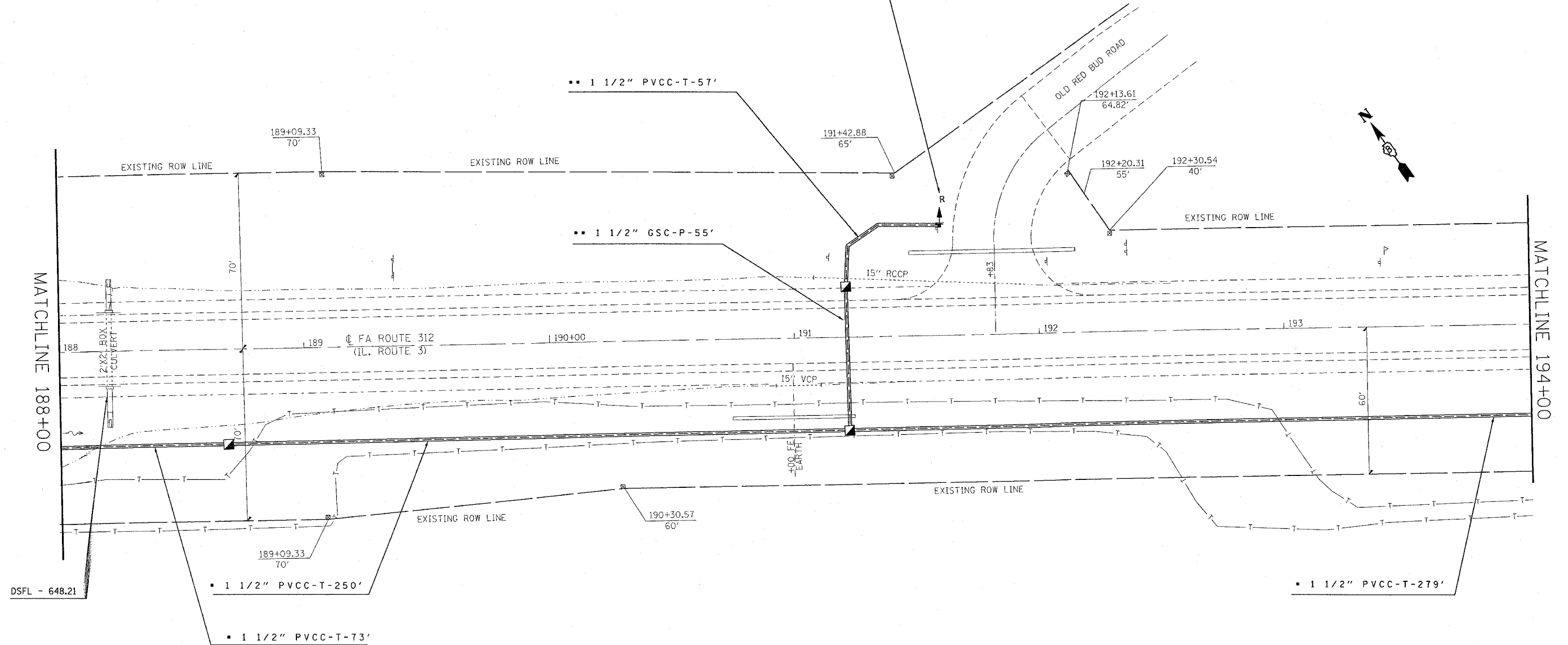
ILLINOIS DEPARTMENT OF TRANSPORTATION
PLAN VIEW - IL 3
 FAP ROUTE 829 / 785 / 312
 SECTION DIST. 8 FLASHING BEACONS 2008-1
 COUNTY MONROE & MADISON
 SCALE: VERT. _____
 HORIZ. _____
 DATE _____ DRAWN BY _____
 CHECKED BY _____

PLOT DATE = #DATE#
 FILE NAME = #FILE#
 SHEET NO. = #SHEET#
 REFERENCE = #REF#

F.A. RTE.	SECTION	COUNTY	TOTAL SHEETS	SHEET NO.
*	**	***	14	11
STA.		TO STA.		
FED. ROAD DIST. NO.	ILLINOIS	FED. AID PROJECT		

- * FAP 829 / 785 / 312
- ** DIST. 8 FLASHING BEACONS 2008-1
- *** MONROE & MADISON

1 1/2" GSC-ATS-14'
 INSTALL RED FLASHING BEACON ON PROPOSED WOOD SIGN POST (DETAIL- C).
 INSTALL NEW SIGN PANEL R1-1 ON PROPOSED SIGN POST.
 REMOVE EXISTING SIGN PANEL ASSEMBLY-TYPE A



- * INSTALL CONDUITS ON BACK SLOPE OF THE DITCH.
- ** BOTTOM OF DITCH ELEVATION FROM MICROFILM IS 649.27. WHILE CROSSING THE DITCH, INSTALL CONDUITS 24" BELOW THE ABOVE ELEVATION OR EXISTING DITCH FLOW LINE ELEVATION, WHICHEVER IS LESS.

REVISIONS	
NAME	DATE

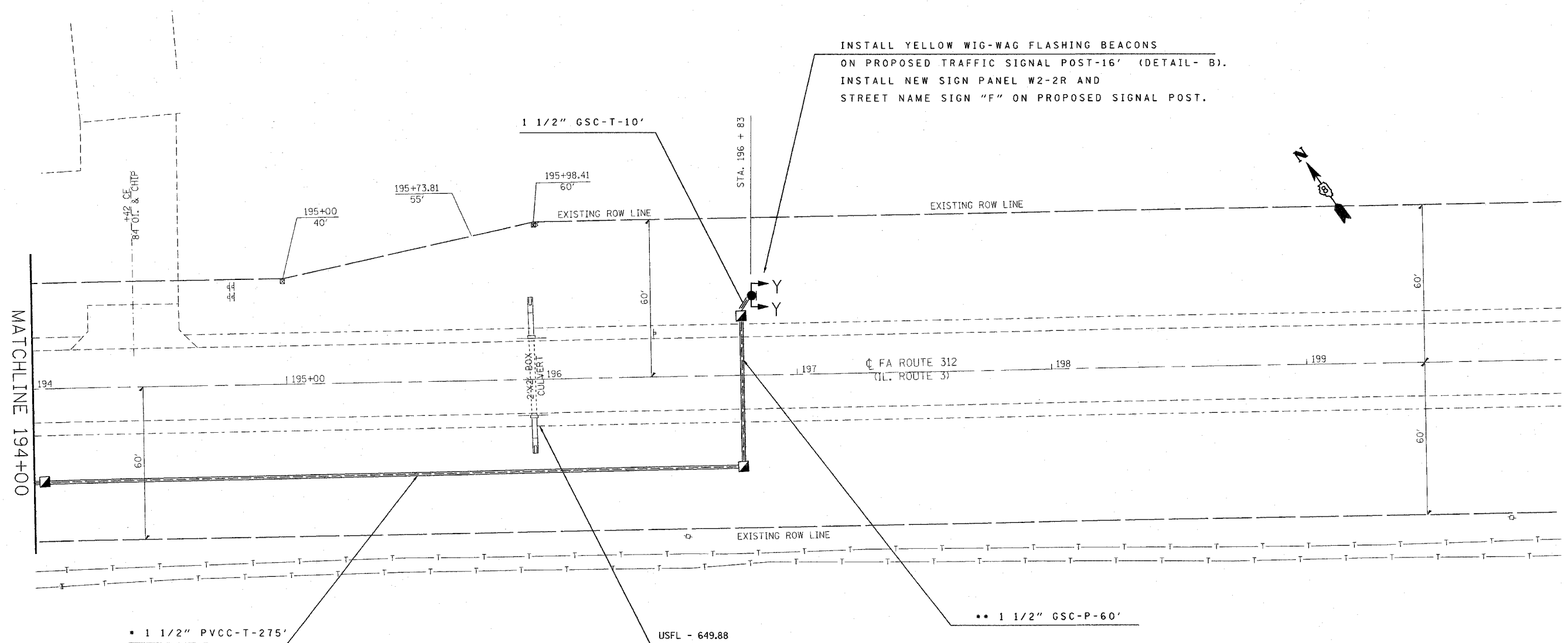
ILLINOIS DEPARTMENT OF TRANSPORTATION
PLAN VIEW - IL 3
 FAP ROUTE 829 / 785 / 312
 SECTION DIST. 8 FLASHING BEACONS 2008-1
 COUNTY MONROE & MADISON

SCALE: VERT. _____
 HORIZ. _____
 DATE _____ DRAWN BY _____
 CHECKED BY _____

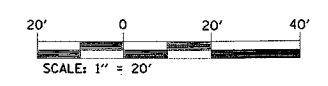
PLOT DATE = #DAYS
 FILE NAME = #FILE#
 PLOT SCALE = #SCALE#
 REFERENCE = #REF#

F.A. RTE.	SECTION	COUNTY	TOTAL SHEETS	SHEET NO.
*	**	***	14	12
STA.		TO STA.		
FED. ROAD DIST. NO.	ILLINOIS	FED. AID PROJECT		

- * FAP 829 / 785 / 312
- ** DIST. 8 FLASHING BEACONS 2008-1
- *** MONROE & MADISON



INSTALL YELLOW WIG-WAG FLASHING BEACONS ON PROPOSED TRAFFIC SIGNAL POST-16' (DETAIL- B).
INSTALL NEW SIGN PANEL W2-2R AND STREET NAME SIGN "F" ON PROPOSED SIGNAL POST.



PLOT DATE = #DAYS
FILE NAME = #FILES
PLOT SCALE = #SCALE
REFERENCE = #REFS

- * INSTALL CONDUITS ON BACK SLOPE OF THE DITCH.
- ** BOTTOM OF DITCH ELEVATION FROM MICROFILM IS 649.73. WHILE CROSSING THE DITCH, INSTALL CONDUIT 24" BELOW THE ABOVE ELEVATION OR EXISTING DITCH FLOW LINE ELEVATION, WHICHEVER IS LESS.

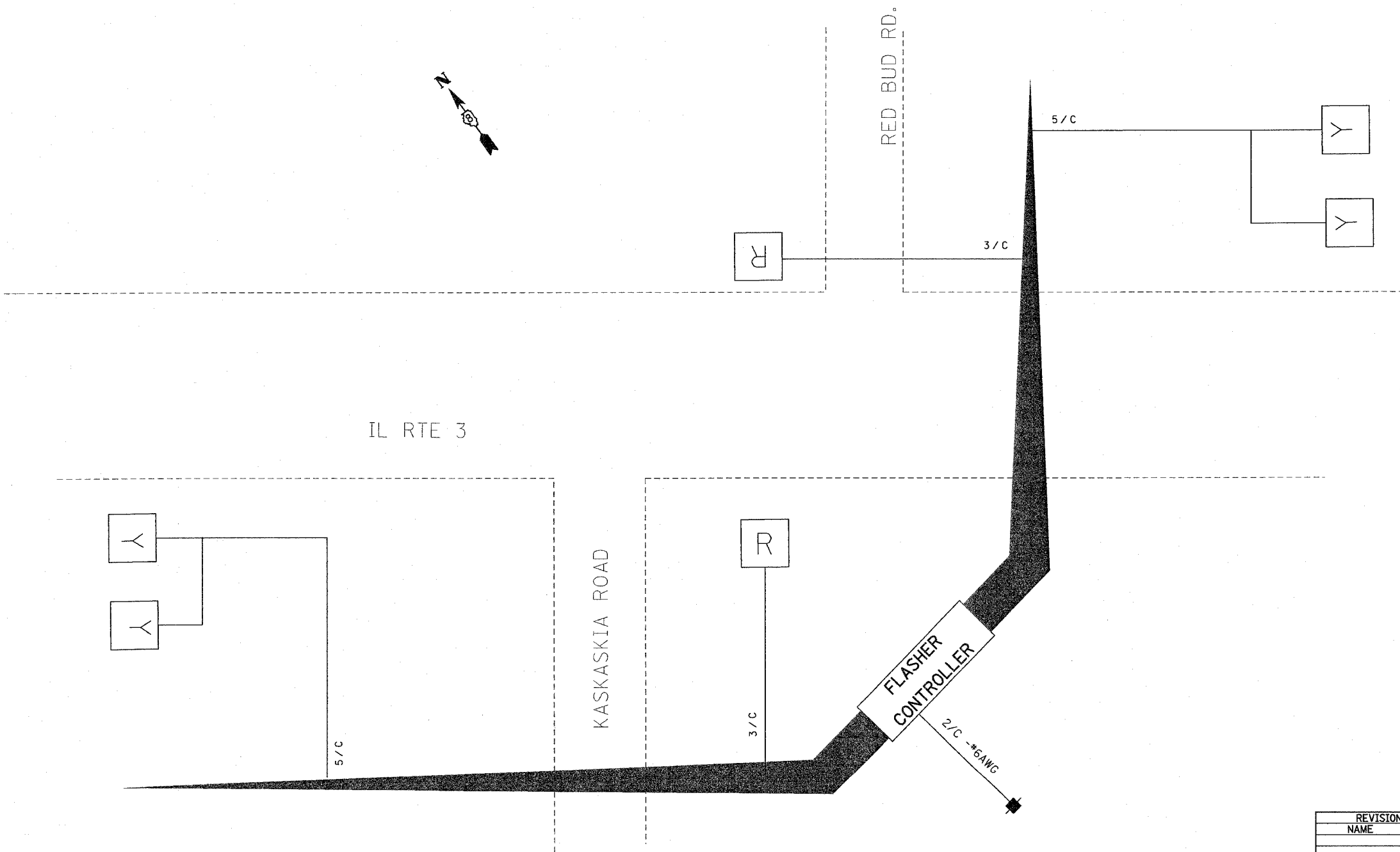
REVISIONS	
NAME	DATE

ILLINOIS DEPARTMENT OF TRANSPORTATION
PLAN VIEW - IL 3
FAP ROUTE 829 / 785 / 312
SECTION DIST. 8 FLASHING BEACONS 2008-1
COUNTY MONROE & MADISON

SCALE: VERT. _____
HORIZ. _____
DATE _____ DRAWN BY _____
CHECKED BY _____

F.A. RTE.	SECTION	COUNTY	TOTAL SHEETS	SHEET NO.
*	**	***	14	13
STA.		TO STA.		
FED. ROAD DIST. NO.	ILLINOIS	FED. AID PROJECT		

- * FAP 829 / 785 / 312
- ** DIST. 8 FLASHING BEACONS 2008-1
- *** MONROE & MADISON



CABLE DIAGRAM LEGEND

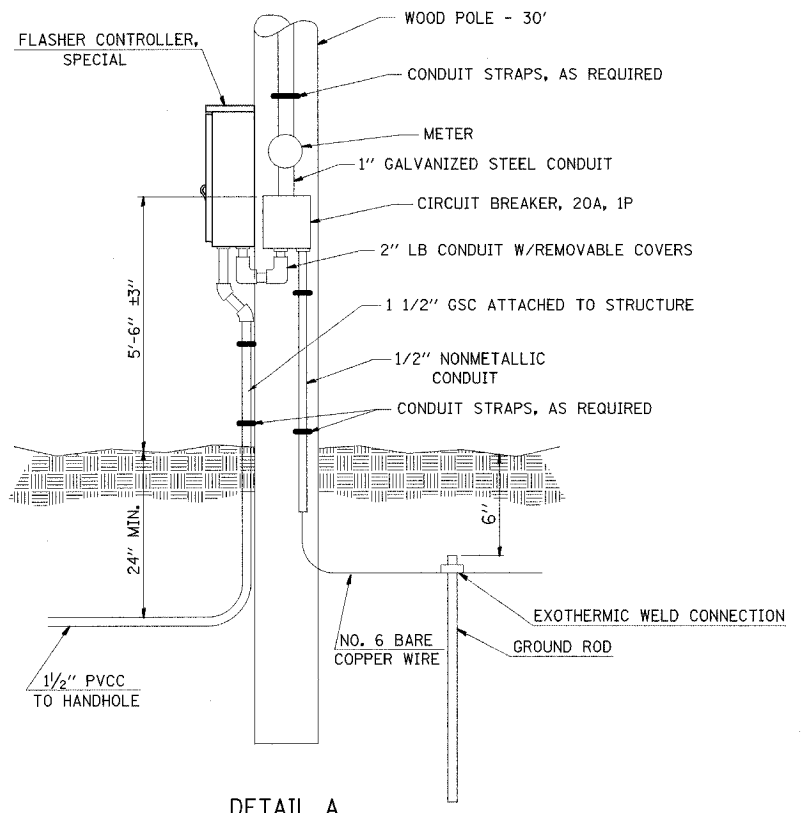
- ELECTRIC CABLE IN CONDUIT
- 2/C INDICATES NUMBER OF CONDUCTORS IN CABLE
- SERVICE INSTALLATION
- *6 INDICATES AMERICAN WIRE GAUGE (AWG) SIZE 6 CONDUCTORS (SEE GENERAL NOTES)
- Y SIGNAL HEAD; Y-YELLOW, R-RED

REVISIONS	
NAME	DATE

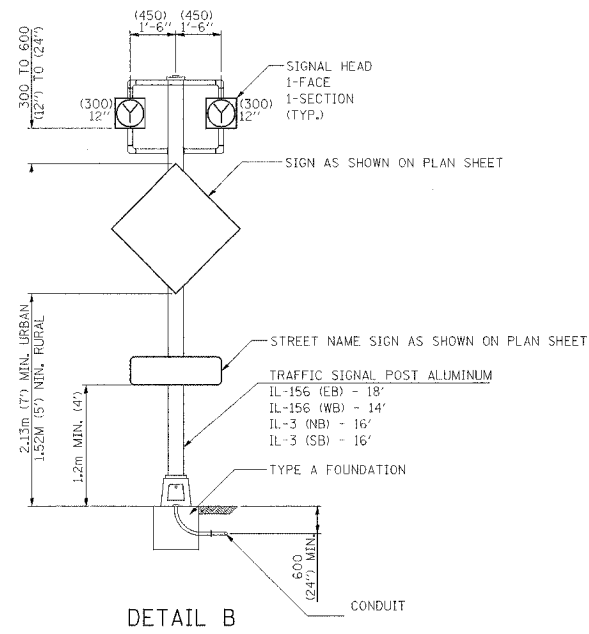
ILLINOIS DEPARTMENT OF TRANSPORTATION
CABLE DIAGRAM
 FAP ROUTE 829 / 785 / 312
 SECTION DIST. 8 FLASHING BEACONS 2008-1
 COUNTY MONROE & MADISON
 IL RTE 3 @ KASKASKIA ROAD
 SCALE: VERT. _____ DRAWN BY _____
 HORIZ. _____ CHECKED BY _____
 DATE _____

PLOT DATE = #DATE#
 FILE NAME = #FILE#
 PLOT SCALE = #SCALE#
 USER NAME = #USER#

F.A. RTE.	SECTION	COUNTY	TOTAL SHEETS	SHEET NO.
..	14	14
STA. _____ TO STA. _____		FED. ROAD DIST. NO. _____ ILLINOIS FED. AID PROJECT		
...EAP 829 / 785 / 312				
...DIST. 8 FLASHING BEACONS 2008-1				
...MONROE & MADISON				

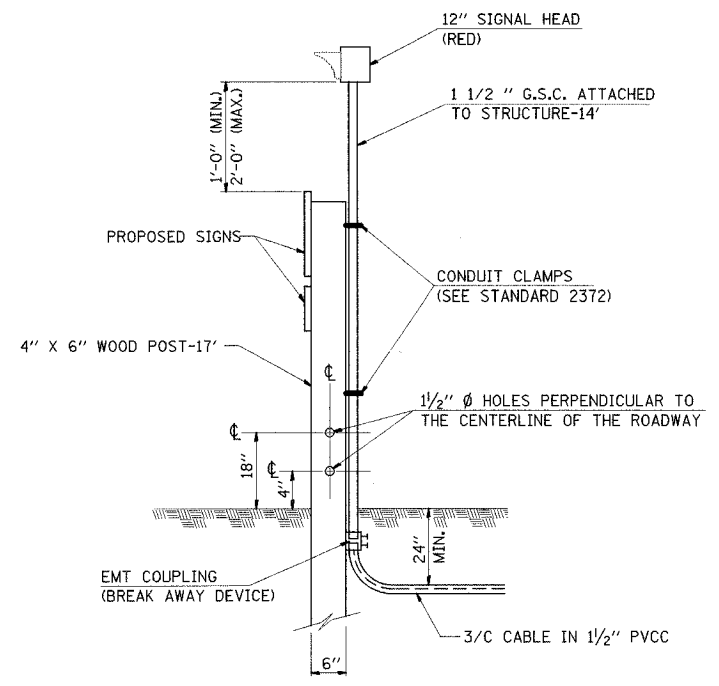


DETAIL A



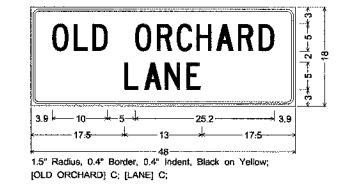
DETAIL B

SIDE BY SIDE POST MOUNTED FLASHING BEACONS

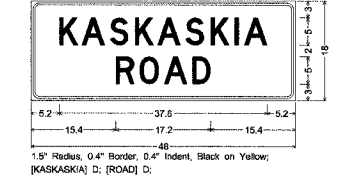


DETAIL C

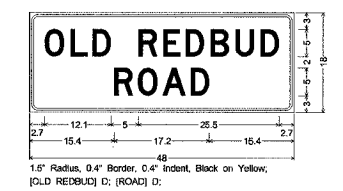
POST MOUNTED FLASHING BEACON



DETAIL-D



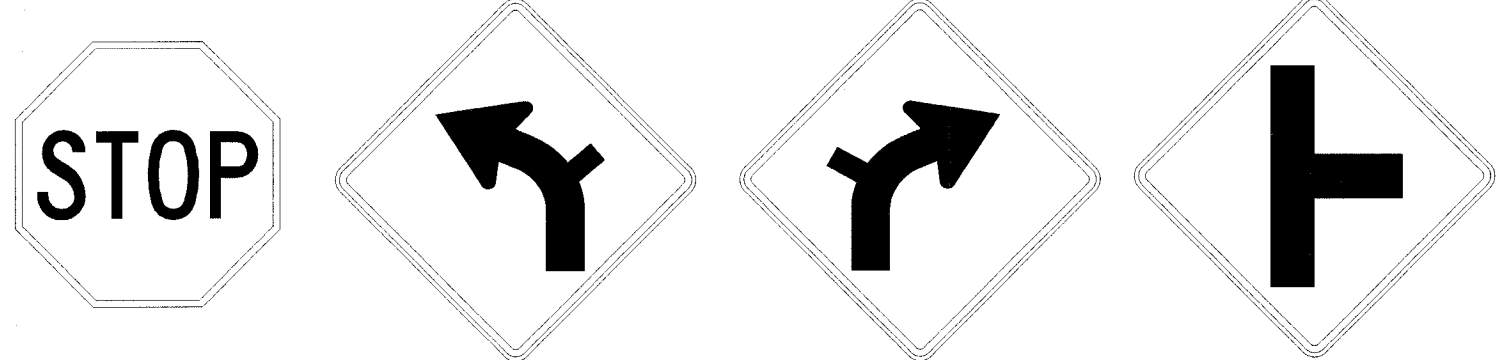
DETAIL-E



DETAIL-F

STREET NAME SIGNS

SERVICE INSTALLATION TYPE A & FLASHER CONTROLLER, SPECIAL
SEE GENERAL NOTE # 7 FOR SERVICE INSTALLATION AT LOCATION IL-140 AND IL-160



R1-1
48" X 48"

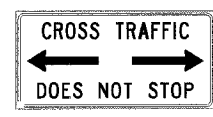
W1-10L
48" X 48"

W1-10R
48" X 48"

W2-2R
48" X 48"



W13-1
24" X 24"



R1-I100
36" X 18"

TRAFFIC SIGNS

REVISIONS		ILLINOIS DEPARTMENT OF TRANSPORTATION
NAME	DATE	
		<p>DETAILS AND SIGNS</p> <p>FAP ROUTE 829 / 785 / 312 SECTION DIST. 8 FLASHING BEACONS 2008-1 COUNTY MONROE & MADISON</p> <p>SCALE: VERT. _____ HORIZ. _____</p> <p>DRAWN BY _____ CHECKED BY _____</p>

PLOT DATE = 10/1/2007
FILE NAME = c:\projects\101007\structural\isp\101007.dgn
USER NAME = pmc