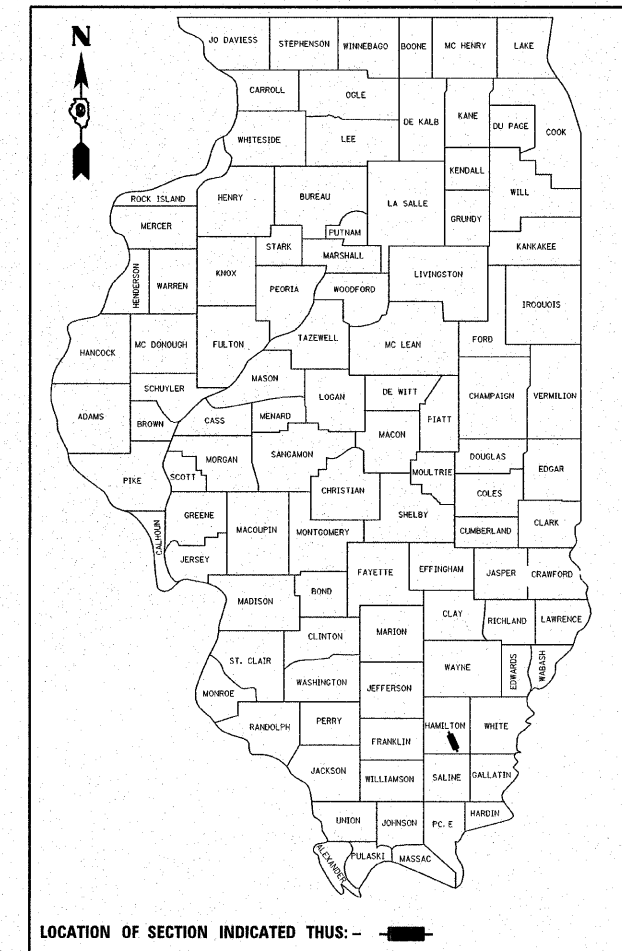


F.A.P. RTE.	SECTION	COUNTY	TOTAL SHEETS	SHEET NO.
776	(116BR-1, BR-2, BR-3)B-1	HAMILTON	140	1

D-99-026-06



LOCATION OF SECTION INDICATED THUS: - [black rectangle] -

STATE OF ILLINOIS
DEPARTMENT OF TRANSPORTATION
DIVISION OF HIGHWAYS
PROPOSED
HIGHWAY PLANS
F.A.P. ROUTE 776 (IL 142)
SECTION (116BR-1, BR-2, BR-3)B-1
HAMILTON COUNTY *Proj. BRF-0776(024)*
STRUCTURE REPLACEMENTS
OVER CONTRARY CREEK AND
TRIBUTARIES TO CONTRARY CREEK
C-99-027-07
TOWNSHIP: MAYBERRY
 R. 7 E., 3RD. P.M.

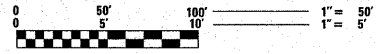
INDEX OF SHEETS

- 1. COVER SHEET
- 2. GENERAL NOTES, COMMITMENTS AND MIXTURE REQUIREMENTS
- 3. SUMMARY OF QUANTITIES AND STANDARDS
- 4.-5. SCHEDULE OF QUANTITIES
- 6.-7. TYPICAL CROSS SECTIONS
- 8.-9. PLAN AND PROFILE SHEETS
- 10.-11. MISCELLANEOUS DETAILS
- 12. DETOUR SIGNING SHEET
- 13.-16. MAINTENANCE OF TRAFFIC
- 17.-18. PAVEMENT MARKING
- 19. EROSION CONTROL PLAN
- 20.-41. STRUCTURE 033-0050 PLANS
- 42.-44. STRUCTURE 033-0050 BORINGS
- 45.-61. STRUCTURE 033-0051 PLANS
- 62.-65. STRUCTURE 033-0051 BORINGS
- 66.-75. STRUCTURE 033-0052 PLANS
- 76.-86. STRUCTURE 033-0052 BORINGS
- 87.-104. CROSS SECTIONS - STAGE I
- 105.-122. CROSS SECTIONS - STAGE II
- 123.-140. CROSS SECTIONS - FINAL STAGE

FOR LIST OF STANDARDS, SEE SHEET NO. 3

DESIGN DESIGNATION
 MINOR ARTERIAL (NON URBAN)
 2005 AADT = 1400
 23% TRUCKS
 POSTED SPEED 55 MPH
 2025 AADT = 1900

SCALES



FULL SIZE PLANS HAVE BEEN PREPARED USING STANDARD ENGINEERING SCALES. REDUCED SIZED PLANS WILL NOT CONFORM TO STANDARD SCALES. IN MAKING MEASUREMENTS ON REDUCED PLANS, THE ABOVE SCALES MAY BE USED.

J.U.L.I.E.
 JOINT UTILITY LOCATION INFORMATION FOR EXCAVATION
 1-800-892-0123

CONTRACT NO. 78006

PROPOSED PROJECT BEGINS
 STATION 513+50.00

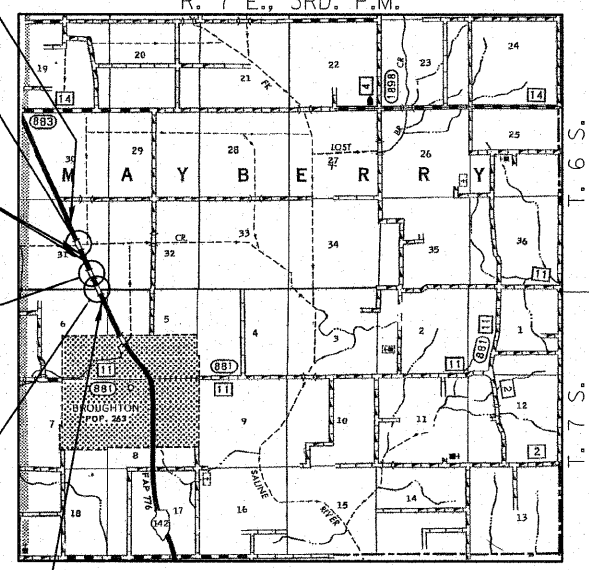
PROPOSED SECTION (116-BR1)B-1; S.N. 033-0050 OVER CONTRARY CREEK; THREE SPAN, STEEL BEAM BRIDGE; 125'-6" BK. - BK. ABUTS.; 32'-0" FC. - FC. PARAPETS; SKEW = 23°30' AT STA. 516+75.00

PROPOSED PROJECT OMISSION
 STATION 520+00.00 TO STATION 536+00.00

PROPOSED SECTION (116-BR2)B-1; S.N. 033-0051 OVER TRIBUTARY TO CONTRARY CREEK; FOUR SPAN, RC SLAB BRIDGE; 137'-0" BK. - BK. ABUTS.; 32'-0" FC. - FC. PARAPETS; SKEW = 0° AT STA. 539+14.20

PROPOSED SECTION (116-BR3)B-1; S.N. 033-0052 OVER TRIBUTARY TO CONTRARY CREEK; FOUR SPAN, RC SLAB BRIDGE; 137'-0" BK. - BK. ABUTS.; 32'-0" FC. - FC. PARAPETS; SKEW = 0° AT STA. 544+26.10

PROPOSED PROJECT ENDS
 STATION 547+50.00



LAYOUT

APPROXIMATE SCALE: 0 1 MILE

GROSS AND NET LENGTH OF SECTION	=	3400.00 FEET	=	0.645 MILES
OMISSION	=	1600.00 FEET	=	0.304 MILES
NET LENGTH OF SECTION	=	1800.00 FEET	=	0.342 MILES
NET ROADWAY LENGTH	=	1400.50 FEET	=	0.266 MILES
BRIDGE LENGTH SN 033-0050	=	125.50 FEET	=	0.024 MILES
BRIDGE LENGTH SN 033-0051	=	137.00 FEET	=	0.026 MILES
BRIDGE LENGTH SN 033-0052	=	137.00 FEET	=	0.026 MILES

STATE OF ILLINOIS
 DEPARTMENT OF TRANSPORTATION
 DIVISION OF HIGHWAYS
 SUBMITTED Oct 11 2007
May [Signature]
 DEPUTY DIRECTOR OF HIGHWAYS, REGION ENGINEER
December 7, 2007
Eric E. Horn
 INTERIM ENGINEER OF DESIGN AND ENVIRONMENT
December 7, 2007
Christine M. Reed
 DIRECTOR OF HIGHWAYS, CHIEF ENGINEER

PRINTED BY THE AUTHORITY OF THE STATE OF ILLINOIS

PROJECT ENGINEER: DAVID PILME, (618)351-5227

DATE: <u>4/20/2007</u>	LICENSE NO.	HAMPTON, LENZINI & RENWICK, INC. CIVIL & STRUCTURAL ENGINEERS 3085 STEVENSON DRIVE, SUITE 201 SPRINGFIELD, ILLINOIS 62703 (217) 546-3400 ELGIN • SPRINGFIELD
BY: <u>[Signature]</u>	LICENSED PROFESSIONAL ENGINEER LOUIS F. STAUDER 062-34221 STATE OF ILLINOIS	
LICENSE EXPIRES: <u>NOVEMBER 30, 2007</u>	SEAL:	PROJECT NUMBER: <u>12-41-0021-1</u> DATE: <u>07/16/07</u>