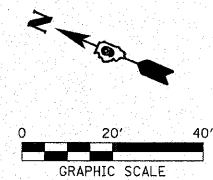
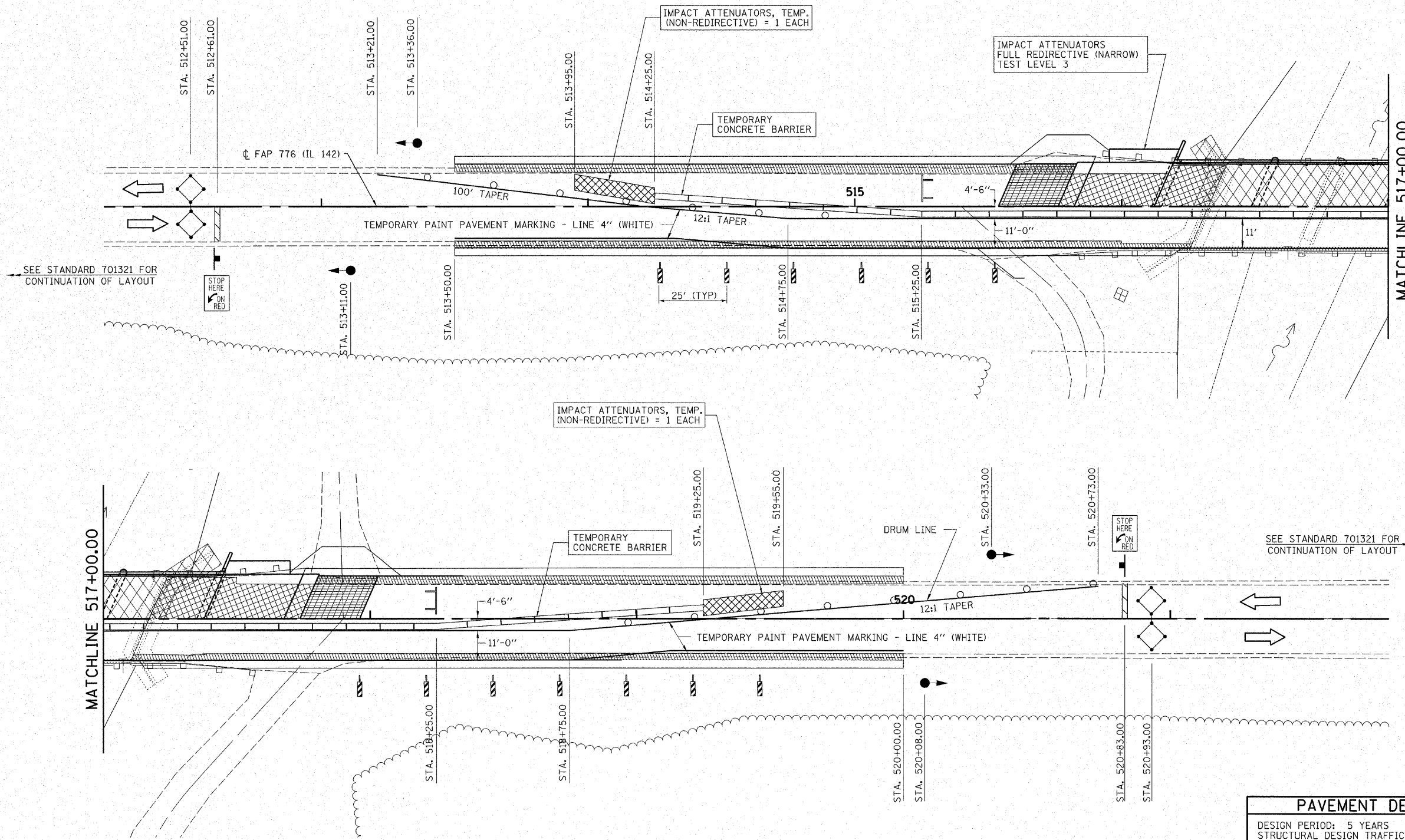


F.A.P. RTE.	SECTION	COUNTY	TOTAL SHEETS	SHEET NO.
776	(116BR-1)B-1	HAMILTON	140	13
STA.		TO STA.		
FED. ROAD DIST. NO.		ILLINOIS FED. AID PROJECT		



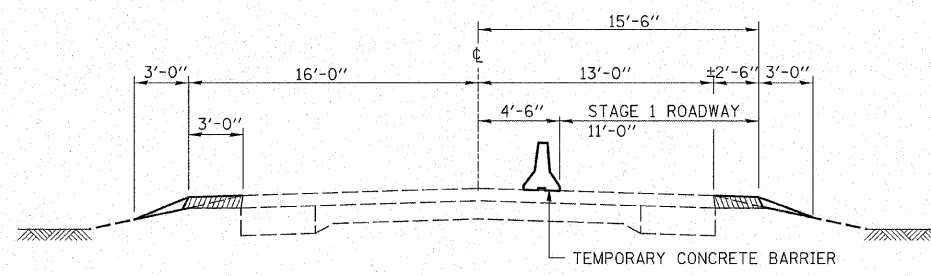
MATCHLINE 517+00.00

MATCHLINE 517+00.00

SEE STANDARD 701321 FOR CONTINUATION OF LAYOUT

SEE STANDARD 701321 FOR CONTINUATION OF LAYOUT

- LEGEND**
- HOT MIX ASPHALT BASE COURSE 1 1/2" (WIDENING)
 - BRIDGE REMOVAL
 - PAVEMENT REMOVAL
 - TEMPORARY RAMP



STAGE 1 TYPICAL CROSS SECTION
H.M.A. WIDENING - STA. 513+50 TO STA. 520+00

PAVEMENT DESIGN (WIDENING)

DESIGN PERIOD: 5 YEARS
 STRUCTURAL DESIGN TRAFFIC (S.D.T.) = 1597 YEAR 2011
 P.V. = 1182 S.U. = 224 M.U. = 192
 ROAD/STREET CLASSIFICATION: CLASS III ROAD
 PERCENT OF S.D.T. IN DESIGN LANE
 P = 50% S = 50% M = 50%
 TRAFFIC FACTOR = ACTUAL TF 0.25 AC TYPE 64-22
 MINIMUM TF
 PG GRADE: BINDER = 64-22 SUFACE = 64-22
 SUBGRADE SUPPORT RATING:
 SSR= POOR

HAMPTON, LENZINI & RENWICK, INC.
 CIVIL & STRUCTURAL ENGINEERS

HLR

3085 STEVENSON DRIVE, SUITE 201
 SPRINGFIELD, ILLINOIS 62703
 (217) 546-3400

ELGIN • SPRINGFIELD

PROJECT NUMBER: 12-41-0021-1 DATE: 10/23/07
 DESIGNED: L.F.S CHECKED: S.W.M. DRAWN: W.J.S.

MAINTENANCE OF TRAFFIC, STAGE 1
 SN 033-0050
 F.A.P. ROUTE 776 (IL 142)
 SECTION (116BR-1, BR-2, BR-3)B-1
 HAMILTON COUNTY

PLOT DATE = 10/26/2007
 FILE NAME = 41021shr\stage1-bl.dgn
 PLOT SCALE =
 USER NAME =