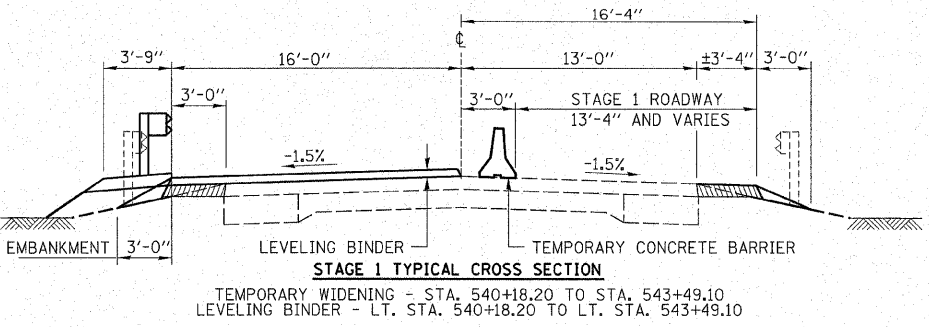
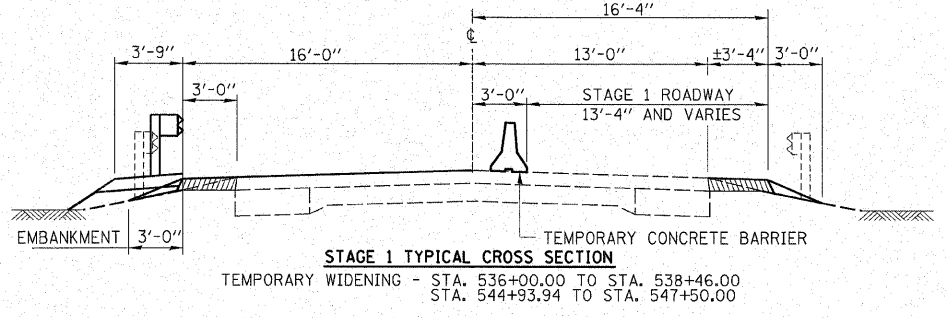
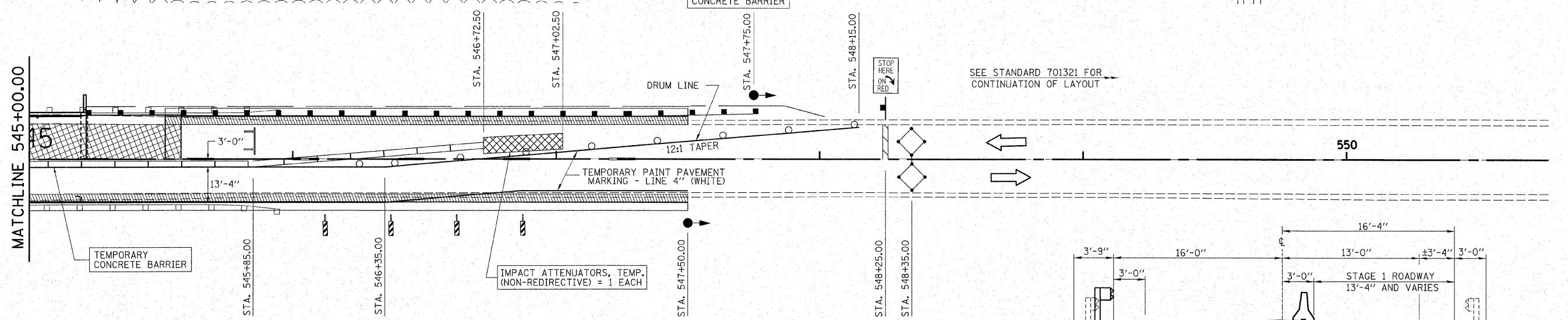
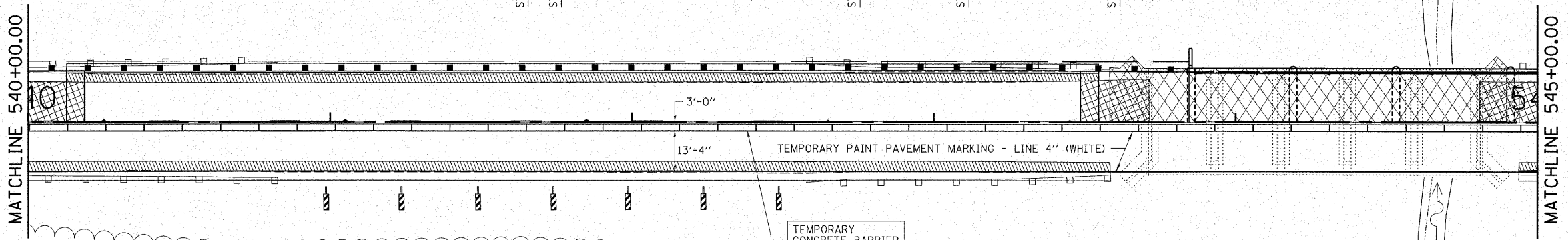
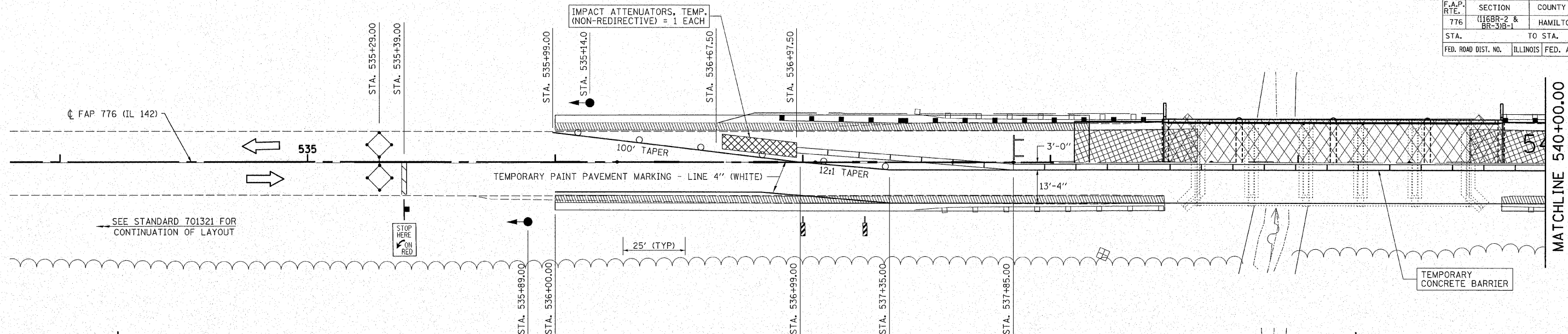
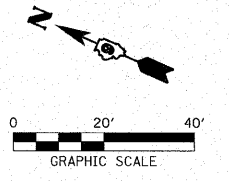


F.A.P. RTE.	SECTION	COUNTY	TOTAL SHEETS	SHEET NO.
776	(116BR-2 & BR-3)B-1	HAMILTON	140	14
STA. TO STA.		ILLINOIS FED. AID PROJECT		



LEGEND

	HOT MIX ASPHALT BASE COURSE 1 1/2" (WIDENING)
	BRIDGE REMOVAL
	PAVEMENT REMOVAL



<p>HAMPTON, LENZINI & RENWICK, INC. CIVIL & STRUCTURAL ENGINEERS</p> <p>3085 STEVENSON DRIVE, SUITE 201 SPRINGFIELD, ILLINOIS 62703 (217) 548-3400</p> <p>HLR</p>		<p>MAINTENANCE OF TRAFFIC, STAGE 1 SN 033-0051 & SN 033-0052</p> <p>F.A.P. ROUTE 776 (IL 142)</p> <p>SECTION (116BR-1, BR-2, BR-3)B-1</p> <p>HAMILTON COUNTY</p>	
<p>ELGIN • SPRINGFIELD</p> <p>PROJECT NUMBER: 12-41-0021-1</p> <p>DESIGNED: L.F.S.</p>	<p>DATE: 10/23/07</p> <p>CHECKED: S.W.M.</p>	<p>DATE: 10/23/07</p> <p>DRAWN: W.J.S.</p>	

PLOT DATE = 10/26/2007
FILE NAME = 41021SH1-stage1-B2.dgn
PLOT SCALE =
USER NAME =