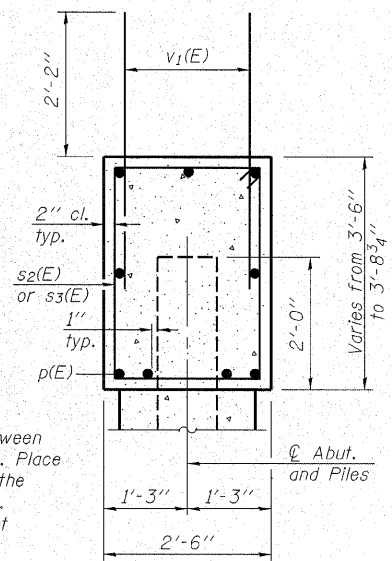
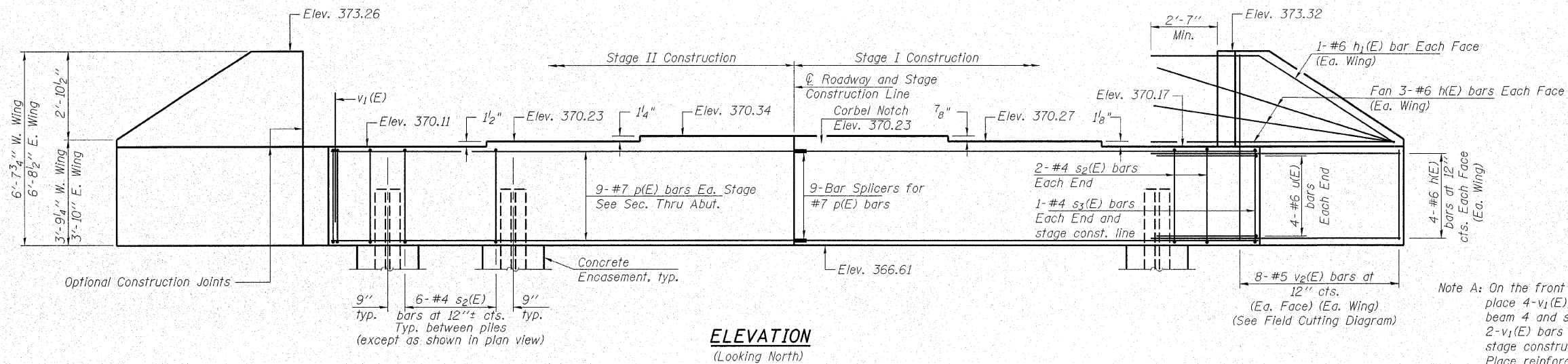


STATE OF ILLINOIS
DEPARTMENT OF TRANSPORTATION

ROUTE NO. F.A.P. 776	SECTION (116BR-11B-1)	COUNTY HAMILTON	TOTAL SHEETS 140	SHEET NO. 35	SHEET NO. 16 25 SHEETS
FED. ROAD DIST. NO. 7		ILLINOIS FED. AID PROJECT-			

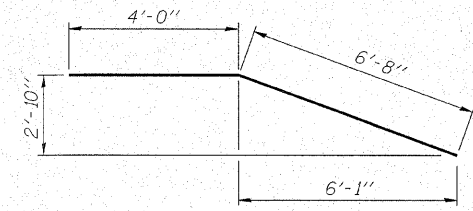
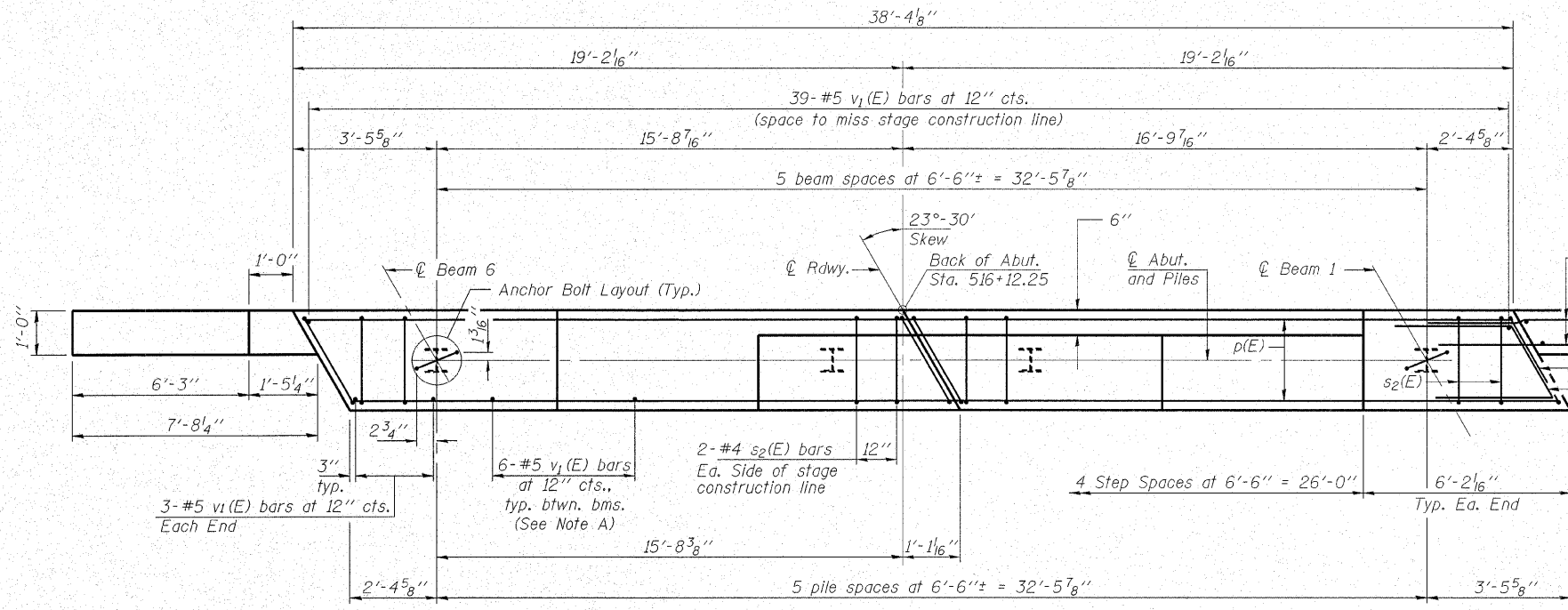
Contract #78006

Notes: Four steps monolithically with cap.

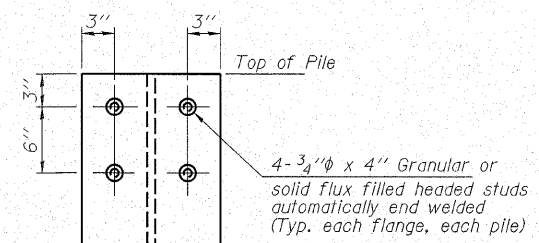


Note A: On the front face of abutment, place 4-v₁(E) bars at 12" cts. between beam 4 and stage construction line. Place 2-v₁(E) bars at 12" cts. between the stage construction line and beam 3. Place reinforcement in the abutment to miss anchor bolts.

SEC. THRU ABUT.



BAR h₁(E)



SEISMIC ANCHORAGE FOR PILES

BILL OF MATERIAL

Bar	No.	Size	Length	Shape
h(E)	28	#6	10'-3"	—
h ₁ (E)	4	#6	10'-8"	—
p(E)	18	#7	18'-10"	—
s ₂ (E)	32	#4	11'-5"	□
s ₃ (E)	4	#4	11'-9"	□
u(E)	8	#6	12'-3"	—
v ₁ (E)	74	#5	4'-4"	—
v ₂ (E)	16	#5	9'-8"	—
Structure Excavation			Cu. Yd.	96
Concrete Structures			Cu. Yd.	15.9
Concrete Encasement			Cu. Yd.	2.0
Stud Shear Connectors			Each	48
Reinforcement Bars, Epoxy Coated			Pound	2,110
Bar Splicers			Each	9
Furnishing Steel Piles, HPI0x57			Foot	350
Driving Piles			Foot	350
Test Pile Steel HPI0x57			Each	1

For details of Bar Splicers, see sheet 20 of 25.
For details of piles and Concrete Encasement, see sheet 22 of 25.

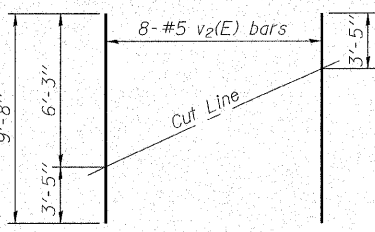
PILE DATA

Type and Size _____ Steel HPI0x57
No. Req'd. _____ *6
Nominal Req'd Bearing _____ 453 Kips/Pile
Allowable Resistance Available _____ 151 Kips/Pile
Est. Lengths _____ 70 F1/Pile

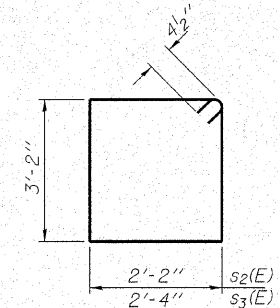
Notes: The Steel H-Piles shall be according to AASHTO M270 Grade 50.

The test piles shall be driven to 110 percent of the Nominal Required Bearing indicated in the pile data information.

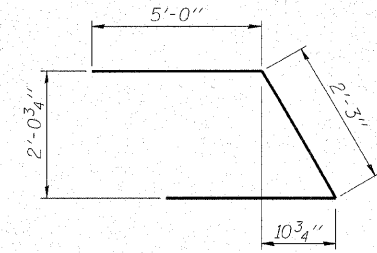
* Includes one test pile to be driven in permanent location at the North Abutment.



FIELD CUTTING DIAGRAM
Order v₂(E) full length. Cut as shown and use remainder of bars in opposite face.



BARS s₂(E) & s₃(E)



BAR u(E)

PLOT DATE: 10/26/2007 FILE NAME: 03330051-78006-41021br.dgn

AI-L

11-1-06

HAMPTON, LENZINI & RENWICK, INC.
CIVIL & STRUCTURAL ENGINEERS
LAND SURVEYORS

3085 STEVENSON DRIVE, SUITE 201
SPRINGFIELD, ILLINOIS 62703
(217) 546-3400

ELGIN • SPRINGFIELD

PROJECT NUMBER: 12-41-0021-1 DATE: 10/25/07
DESIGNED: P.L. CHECKED: S.W.M. DRAWN: D.T.M.

NORTH ABUTMENT
IL ROUTE 142 OVER CONTRARY CREEK
F.A.P. ROUTE 776 - SECTION (116BR-11B-1)
HAMILTON COUNTY
STRUCTURE NO. 033-0050 / STATION 516+75