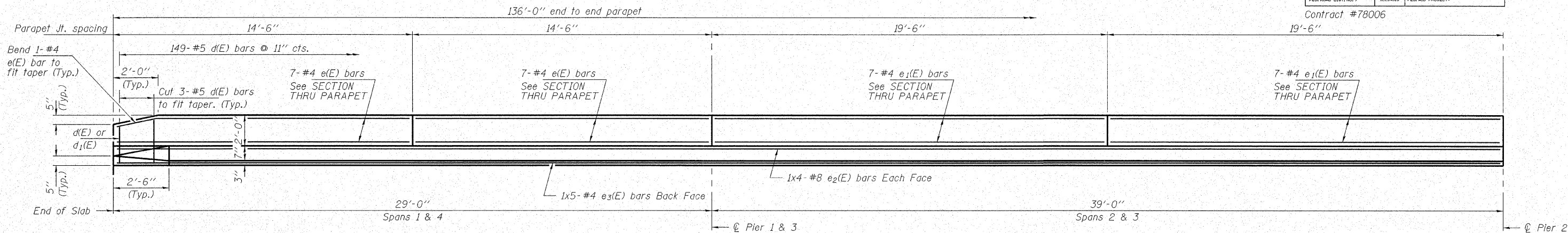


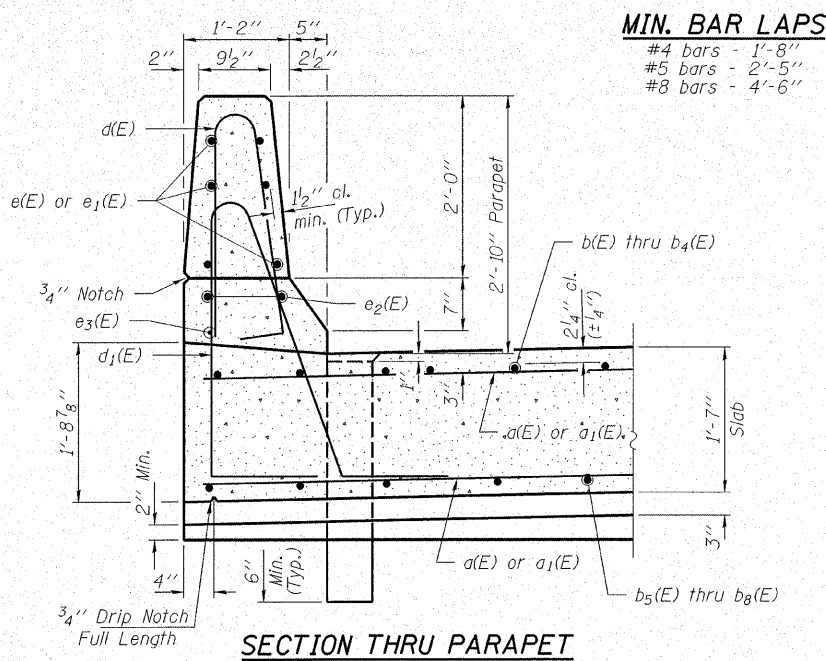
STATE OF ILLINOIS
DEPARTMENT OF TRANSPORTATION

ROUTE NO.	SECTION	COUNTY	SHEETS	SHEET NO.
F.A.P. 776	(116BR-2)B-1	HAMILTON	140	54
FED. ROAD DIST. NO. 7		ILLINOIS	FED. AID PROJECT	

Contract #78006



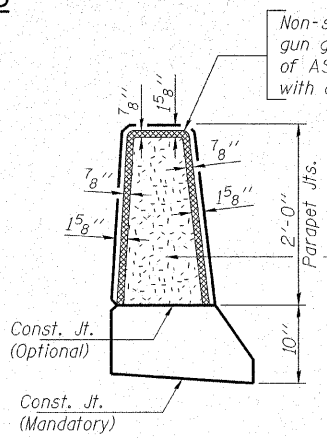
INSIDE ELEVATION OF PARAPET



SECTION THRU PARAPET

MIN. BAR LAPS

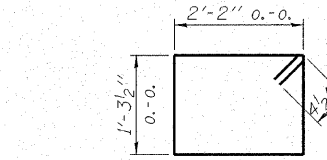
- #4 bars - 1'-8"
- #5 bars - 2'-5"
- #8 bars - 4'-6"



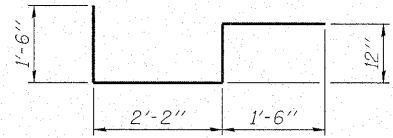
PARAPET JOINT DETAILS

Non-staining gray one component non-sag elastomeric gun grade polyurethane sealant meeting the requirements of ASTM C-920, Type S, Grade NS, Class 25. Use T with a 5/8" backer rod.

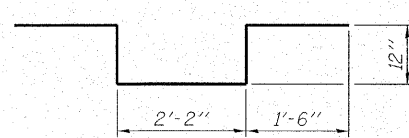
1/2" Preformed Self-Expanding Cork Joint Filler according to Article 1051.07 of the Std. Spec. Cost included with Concrete Superstructure.



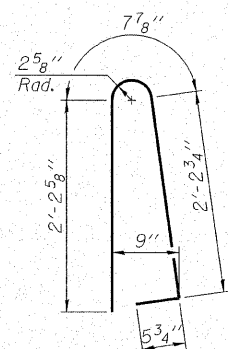
BAR s(E)



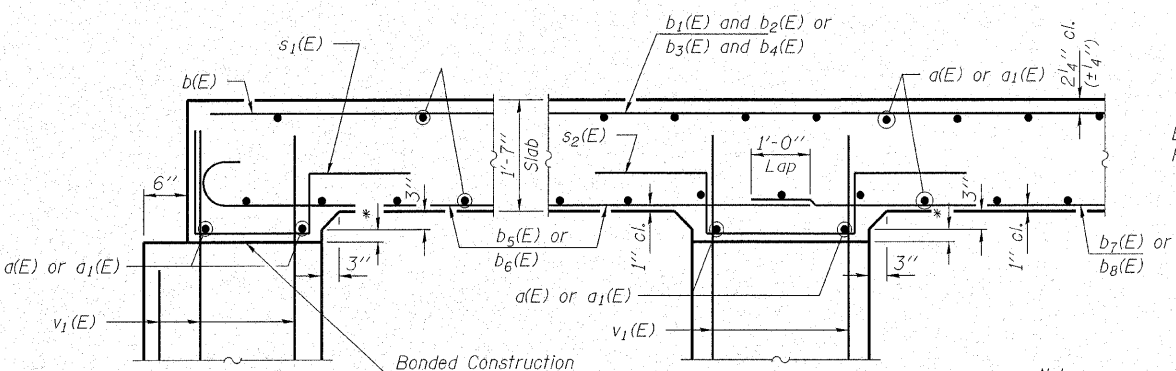
BAR s1(E)



BAR s2(E)



BAR d(E)

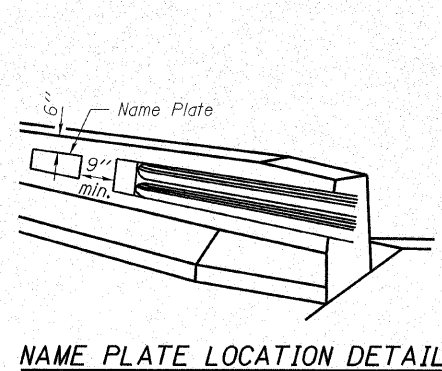


SECTION A-A

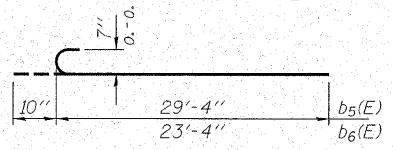
SECTION B-B

*Varies 2" to 5 1/2"
Dimensions are @ Rt. L's

Notes:
Floor drains need not be painted.
Fiberglass pipe shall conform to ASTM D 2996, with short-time rupture strength hoop tensile stress of 30,000 p.s.i. minimum.



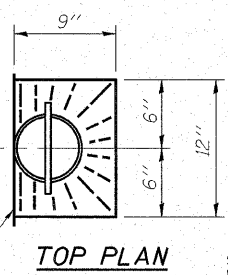
NAME PLATE LOCATION DETAIL



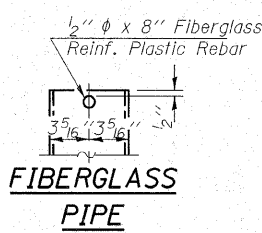
BAR b5(E) or b6(E)

SUPERSTRUCTURE
BILL OF MATERIAL

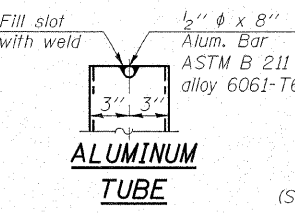
Bar	No.	Size	Length	Shape
d(E)	239	#5	15'-3"	—
a1(E)	239	#5	19'-3"	—
b(E)	144	#5	16'-3"	—
b1(E)	72	#8	27'-9"	—
b2(E)	70	#9	16'-6"	—
b3(E)	36	#9	30'-0"	—
b4(E)	35	#9	15'-6"	—
b5(E)	72	#7	30'-11"	C
b6(E)	70	#7	24'-2"	C
b7(E)	144	#7	22'-2"	—
b8(E)	70	#8	27'-6"	—
d(E)	298	#5	5'-7"	—
d1(E)	298	#5	8'-9"	—
e(E)	56	#4	14'-2"	—
e1(E)	56	#4	19'-2"	—
e2(E)	16	#8	37'-3"	—
e3(E)	10	#4	28'-6"	—
s(E)	137	#5	7'-8"	—
s1(E)	72	#5	6'-2"	—
s2(E)	108	#5	7'-2"	—
Floor Drains	Each		12	
Concrete Superstructure		Cu. Yd.	321.1	
Bridge Deck Grooving		Sq. Yd.	484	
Protective Coat		Sq. Yd.	606	
Reinforcement Bars, Epoxy Coated		Pound	55,340	
Bar Splacers	Each		239	
Name Plates	Each		1	



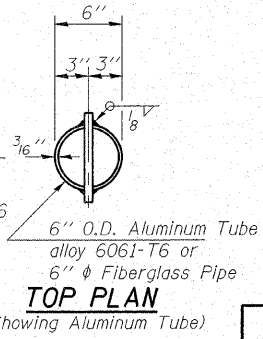
TOP PLAN



FIBERGLASS PIPE



ALUMINUM TUBE



TOP PLAN (Showing Aluminum Tube)

HAMPTON, LENZINI & RENWICK, INC.
CIVIL & STRUCTURAL ENGINEERS
LAND SURVEYORS

3085 STEVENSON DRIVE, SUITE 201
SPRINGFIELD, ILLINOIS 62703
(217) 546-3400

ELGIN • SPRINGFIELD

PROJECT NUMBER: 12-41-0021-1 DATE: 09/25/07
DESIGNED: S.M.S. CHECKED: S.W.M. DRAWN: D.B.

SUPERSTRUCTURE DETAILS
IL RTE. 142 OVER CONTRARY CREEK (NORTH OVERFLOW)
F.A.P. ROUTE 776 - SECTION (116BR-2)B-1
HAMILTON COUNTY
STRUCTURE NO. 033-0051 / STATION 539+14.20

PLOT DATE: 10/26/2007 FILE NAME: 0330051-78006-41021br.dwg 0051.dgn