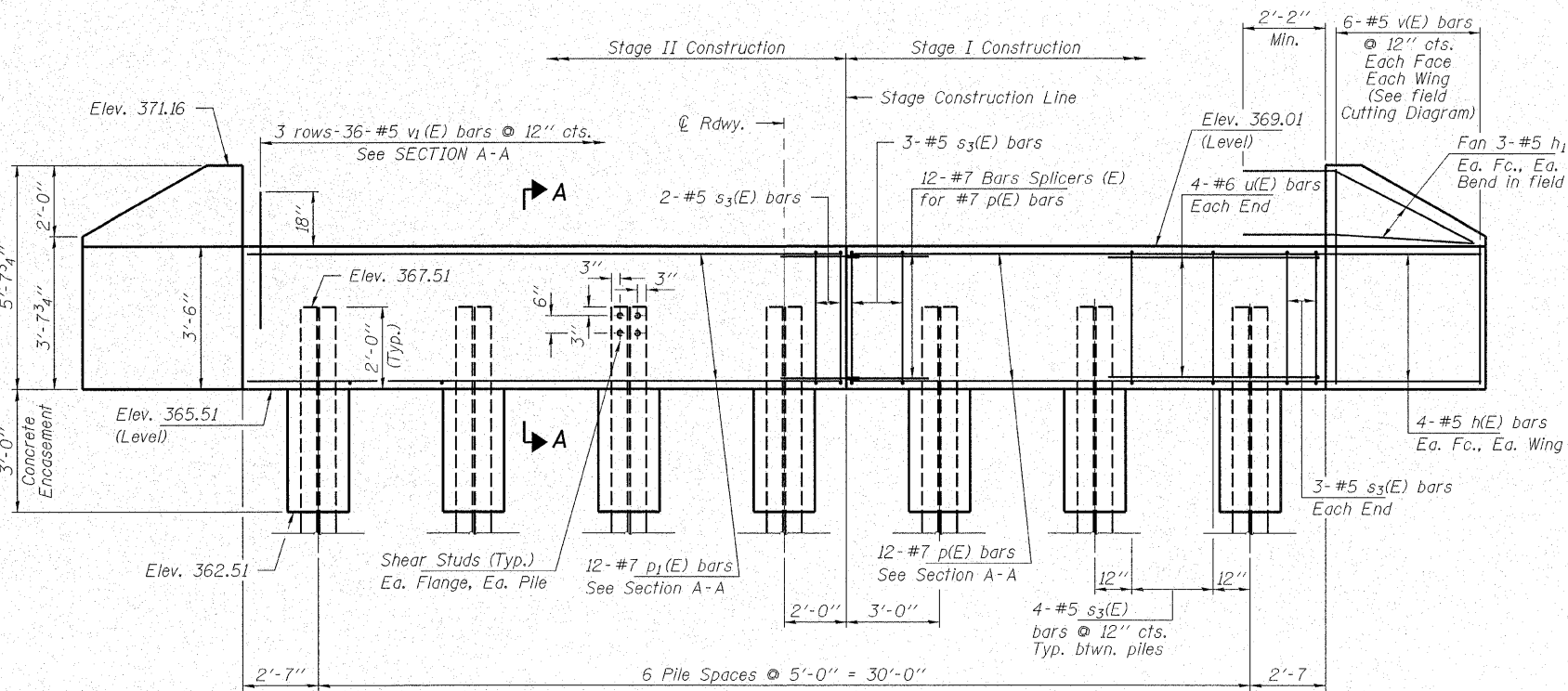


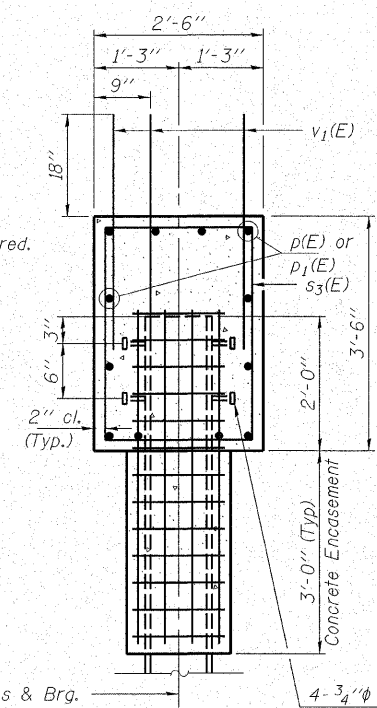
STATE OF ILLINOIS  
DEPARTMENT OF TRANSPORTATION

ROUTE NO. F.A.P. 776	SECTION (116BR -2)B-1	COUNTY HAMILTON	DATE 140	SHEET NO. 55	SHEET NO. 11 21 SHEETS
FED. ROAD DIST. NO. 7		ILLINOIS		FED. AID PROJECT-	

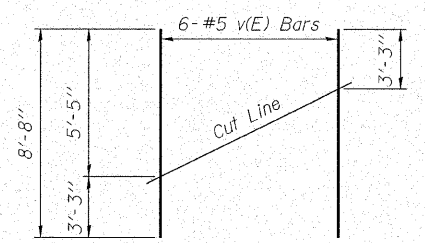
Contract #78006



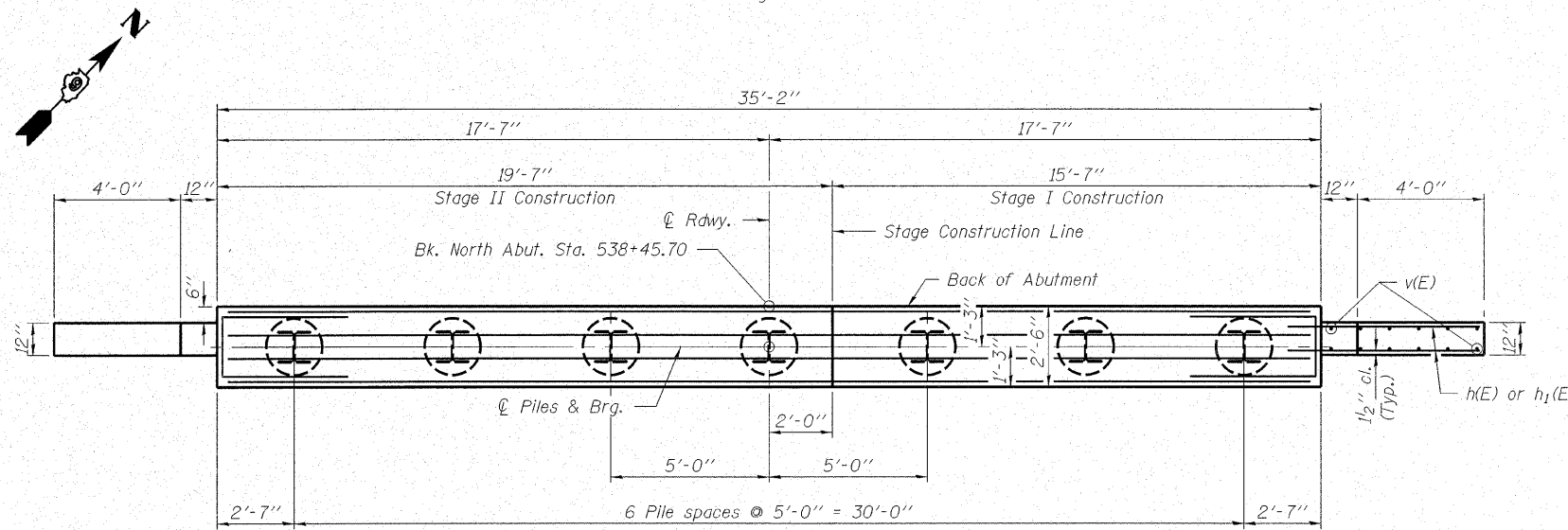
**ELEVATION**  
(Looking North)



**SECTION A-A**



**FIELD CUTTING DIAGRAM**  
Order v(E) bars full length. Cut as shown and use remainder of bars in opposite face.

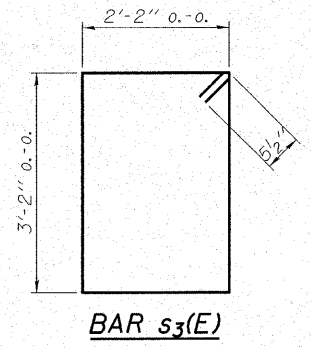


**PLAN**

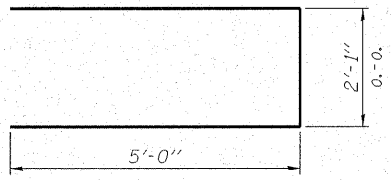
**PILE DATA**

Type and Size \_\_\_\_\_ Steel HP10x57  
 No. Req'd. \_\_\_\_\_ 7  
 Nominal Req'd Bearing \_\_\_\_\_ 453 Kips/Pile  
 Allowable Resistance Available \_\_\_\_\_ 151 Kips/Pile  
 Est. Lengths \_\_\_\_\_ 70 Ft/Pile

Notes: The Steel H-Piles shall be according to AASHTO M270 Grade 50.



**BAR s3(E)**



**BAR u(E)**

**BILL OF MATERIAL - N. ABUT.**

BAR	NO.	SIZE	LENGTH	SHAPE
h(E)	16	#5	7'-0"	—
h1(E)	12	#5	7'-6"	—
p(E)	12	#7	15'-3"	—
p1(E)	12	#7	19'-3"	—
s3(E)	31	#5	11'-7"	□
u(E)	8	#6	12'-1"	U
v(E)	12	#5	8'-8"	—
v1(E)	108	#5	4'-0"	—
Structure Excavation			Cu. Yd.	75
Concrete Structures			Cu. Yd.	13.2
Concrete Encasement			Cu. Yd.	2.4
Stud Shear Connectors			Each	56
Reinforcement Bars, Epoxy Coated			Pound	2,140
Bar Splicers			Each	12
Steel Piles HP10x57			Foot	490

For details of Bar Splicers, see sheet 16 of 21.  
 For details of Piles and Concrete Encasement, see sheet 17 of 21.

Excavation behind existing abutment walls shall be performed to balance front and back soil pressure before removing the existing superstructure. The Contractor shall sawcut the upper portion of the existing abutment at the stage removal line before Stage I removal to ensure the remaining portion will not be prematurely damaged.

**HAMPTON, LENZINI & RENWICK, INC.**  
 CIVIL & STRUCTURAL ENGINEERS  
 LAND SURVEYORS

**HLR**

3085 STEVENSON DRIVE, SUITE 201  
 SPRINGFIELD, ILLINOIS 62703  
 (217) 546-3400

ELGIN • SPRINGFIELD

PROJECT NUMBER: 12-41-0021-1 DATE: 09/25/07  
 DESIGNED: S.M.S. CHECKED: S.W.M. DRAWN: D.B.

**NORTH ABUTMENT**  
**IL RTE. 142 OVER CONTRARY CREEK (NORTH OVERFLOW)**  
**F.A.P. ROUTE 776 - SECTION (116BR-2)B-1**  
**HAMILTON COUNTY**  
**STRUCTURE NO. 033-0051 / STATION 539+14.20**

PLOT DATE: 10/26/2007 FILE NAME: 0330051-78006-41021br.dgn