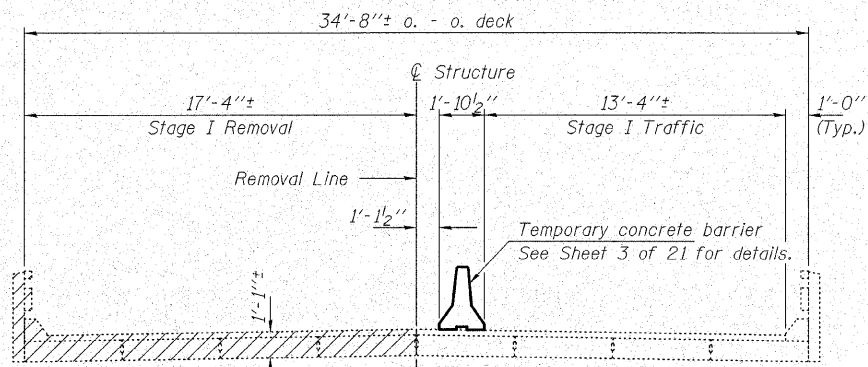


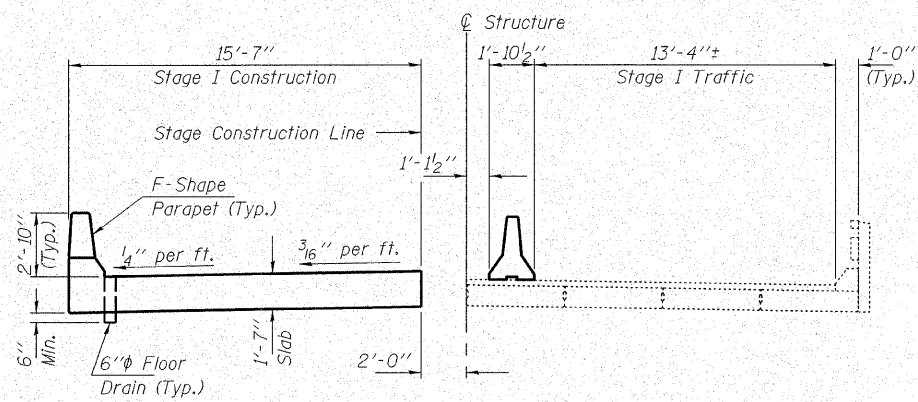
STATE OF ILLINOIS
DEPARTMENT OF TRANSPORTATION

ROUTE NO. 776	SECTION 116BR-31B-1	COUNTY HAMILTON	TOTAL SHEETS 140	SHEET NO. 67	SHEET NO. 2 21 SHEETS
FED. ROAD DIST. NO. 7		ILLINOIS	FED. AID PROJECT-		

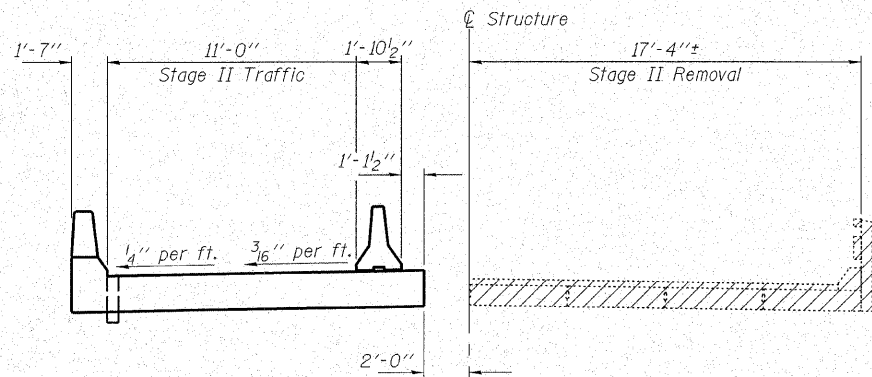
Contract #78006



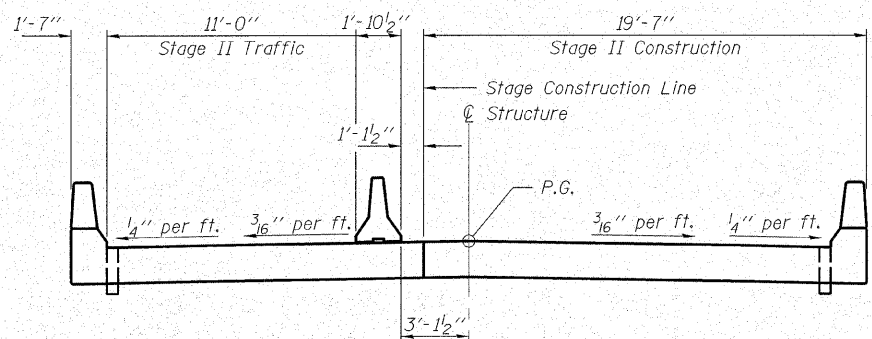
STAGE I REMOVAL



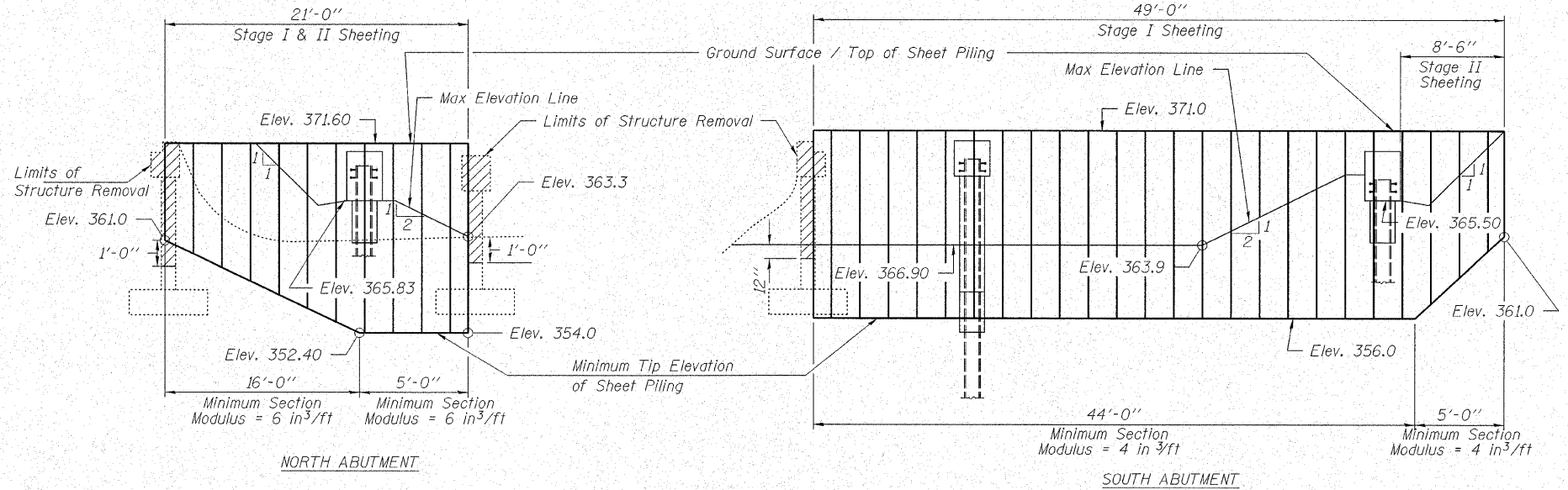
STAGE I CONSTRUCTION



STAGE II REMOVAL

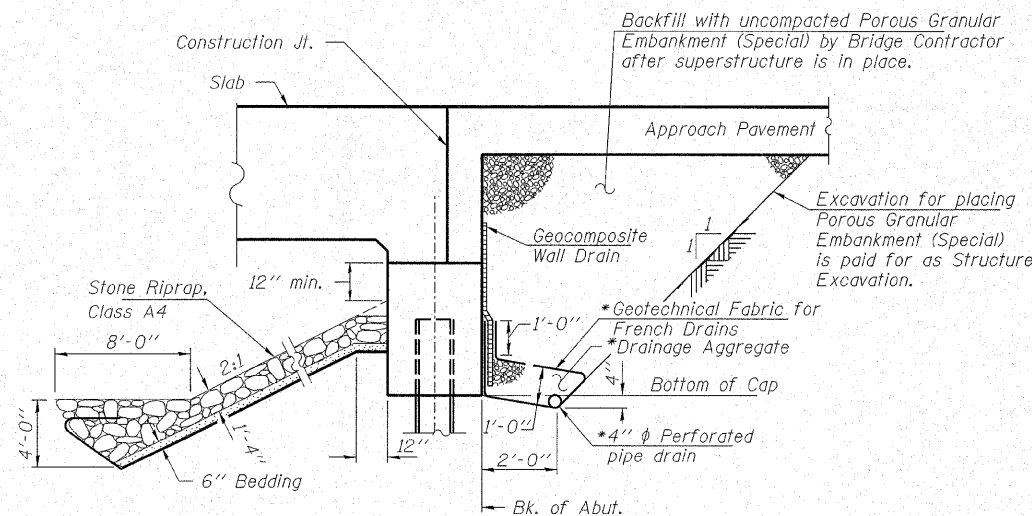


STAGE II CONSTRUCTION



TEMPORARY SHEET PILING DETAILS

Notes:
If the Contractor chooses to alter the temporary cantilevered sheet piling design requirements shown on the plans, a design submittal including plan details and calculations will be required for review and acceptance by the Engineer. The Contractor shall connect the first sheet to the existing abutment wall to ensure stability of sheets driven to the top of the existing footing. This connection shall be reviewed and accepted by the Engineer and included in the cost for Temporary Sheet Piling.

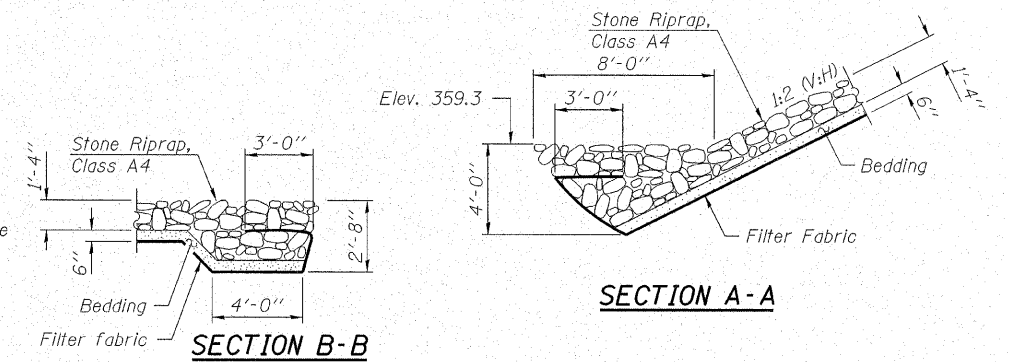


SECTION THRU INTEGRAL ABUTMENT

(Horiz. dim. @ Rt. L's)

* Included in the cost of Pipe Underdrains for Structures.

Note: All drainage system components shall extend to 2'-0" from the end of each wingwall except an outlet pipe shall drain into concrete headwalls. (See Article 601.05 of the Standards Specifications and Highway Standard 601101)



SECTION A-A

SECTION B-B

BILL OF MATERIAL

Item	Unit	Quantity
Temporary Sheet Piling	Sq. Ft.	1,025

HAMPTON, LENZINI & RENWICK, INC.
CIVIL & STRUCTURAL ENGINEERS
LAND SURVEYORS
3085 STEVENSON DRIVE, SUITE 201
SPRINGFIELD, ILLINOIS 62703
(217) 548-3400
ELGIN • SPRINGFIELD
PROJECT NUMBER: 12-41-0021-1 DATE: 10/25/07
DESIGNED: R.J.P. CHECKED: S.W.M. DRAWN: D.A.B.

STAGE CONSTRUCTION DETAILS
IL RTE. 142 OVER CONTRARY CREEK (SOUTH OVERFLOW)
F.A.P. ROUTE 776 - SECTION (116BR-31B-1)
HAMILTON COUNTY
STRUCTURE NO. 033-0052 / STATION 544+53.10