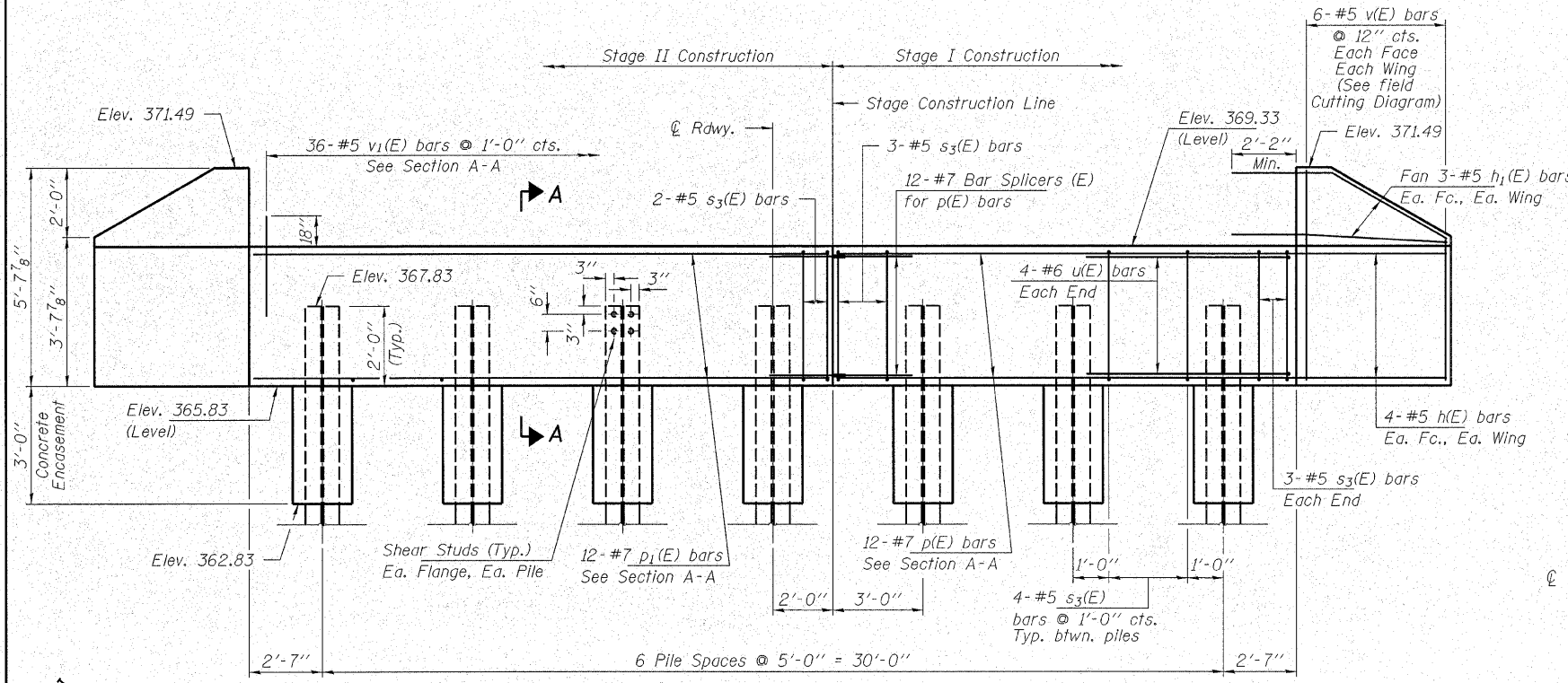


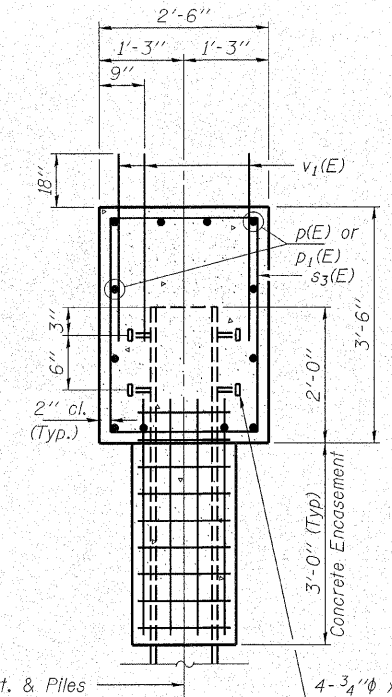
STATE OF ILLINOIS
DEPARTMENT OF TRANSPORTATION

ROUTE NO. 776	SECTION (116BR-3)B-1	COUNTY HAMILTON	SHEET NO. 140	SHEET 76	SHEET NO. 11
FED. ROAD DIST. NO. 7					ILLINOIS
FED. AID PROJECT					21 SHEETS

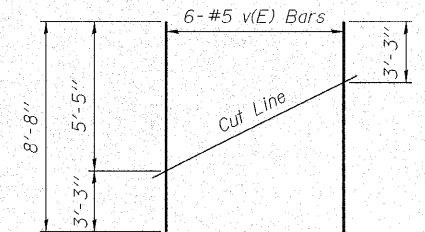
Contract #78006



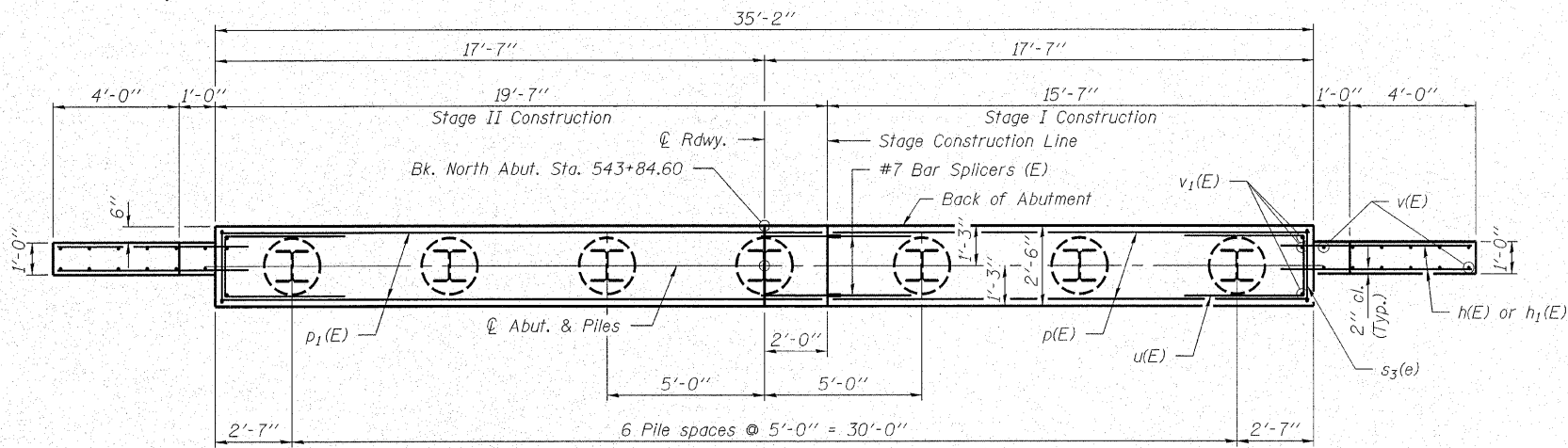
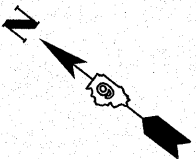
ELEVATION
(Looking North)



SECTION A-A



FIELD CUTTING DIAGRAM
Order v(E) bars full length. Cut as shown and use remainder of bars in opposite face.

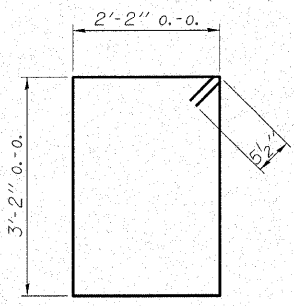


PLAN

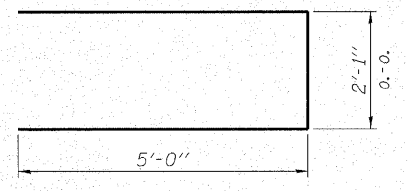
PILE DATA

Type and Size _____ Steel HP10x57
No. Req'd. _____ 7
Nominal Req'd Bearing _____ 453 Kips/Pile
Allowable Resistance Available _____ 151 Kips/Pile
Est. Lengths _____ 60 Ft/Pile

Notes: The Steel H-Piles shall be according to AASHTO M270 Grade 50.



BAR s3(E)



BAR u(E)

BILL OF MATERIAL - N. ABUT.

BAR	NO.	SIZE	LENGTH	SHAPE
h(E)	16	#5	7'-0"	—
h1(E)	12	#5	7'-6"	—
p(E)	12	#7	15'-3"	—
p1(E)	12	#7	19'-3"	—
s3(E)	31	#5	11'-7"	□
u(E)	8	#6	12'-1"	—
v(E)	12	#5	8'-8"	—
v1(E)	108	#5	4'-0"	—
Concrete Structures			Cu. Yd.	13.2
Concrete Encasement			Cu. Yd.	2.4
Stud Shear Connectors			Each	56
Reinforcement Bars, Epoxy Coated			Pound	2,140
Bar Splicers			Each	12
Furnishing Steel Piles HP10x57			Foot	420

For details of Bar Splicers, see sheet 16 of 21.
For details of Piles and Concrete Encasement, see sheet 17 of 21.

Excavation behind existing abutment walls shall be performed to balance front and back soil pressure before removing the existing superstructure. The Contractor shall sawcut the upper portion of the existing abutment at the stage removal line before Stage I removal to ensure the remaining portion will not be prematurely damaged.

HAMPTON, LENZINI & RENWICK, INC.
CIVIL & STRUCTURAL ENGINEERS
LAND SURVEYORS
3085 STEVENSON DRIVE, SUITE 201
SPRINGFIELD, ILLINOIS 62703
(217) 646-3400
ELGIN • SPRINGFIELD

NORTH ABUTMENT
IL RTE. 142 OVER CONTRARY CREEK (SOUTH OVERFLOW)
F.A.P. ROUTE 776 - SECTION (116BR-3)B-1
HAMILTON COUNTY
STRUCTURE NO. 033-0052 / STATION 544+53.10

PLOT DATE: 10/26/2007 FILE NAME: 0330052-78006-41021br.dwg 0052.dwg