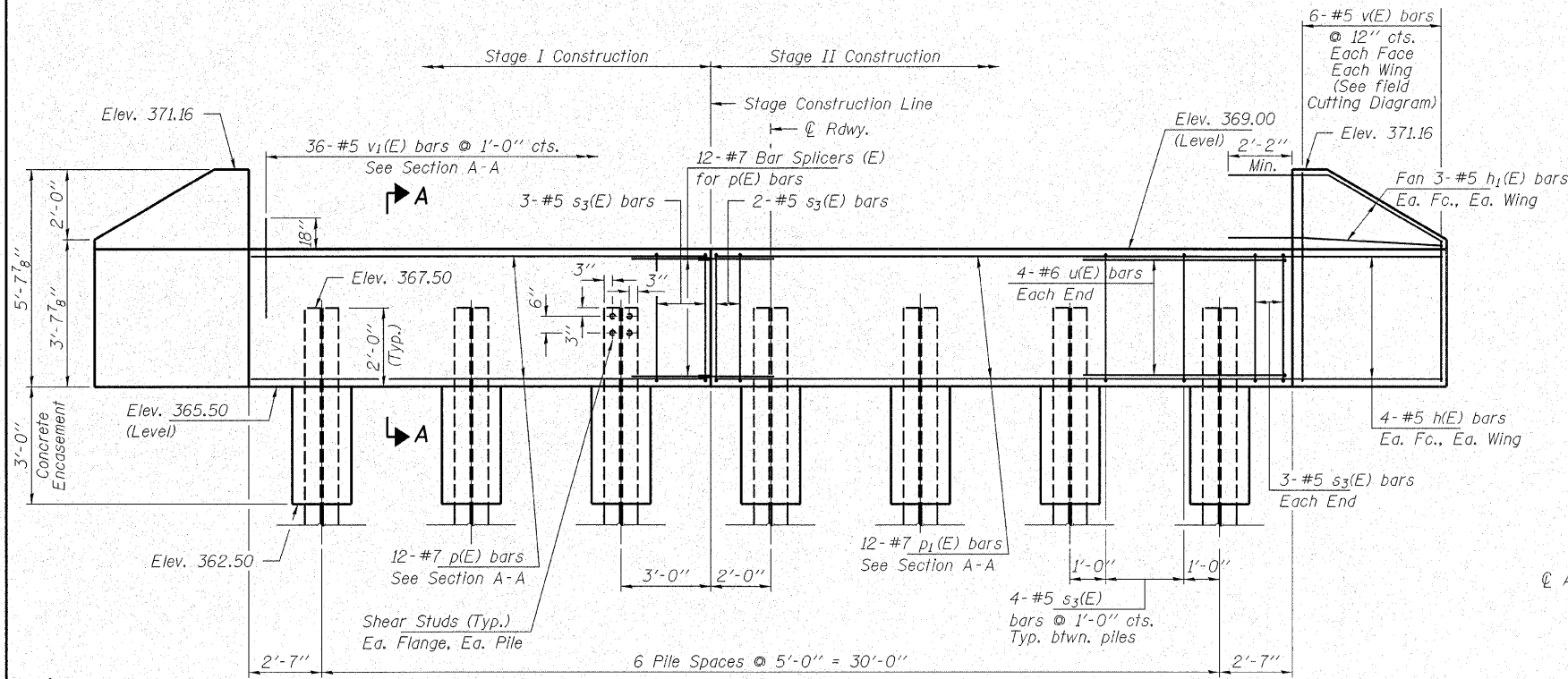


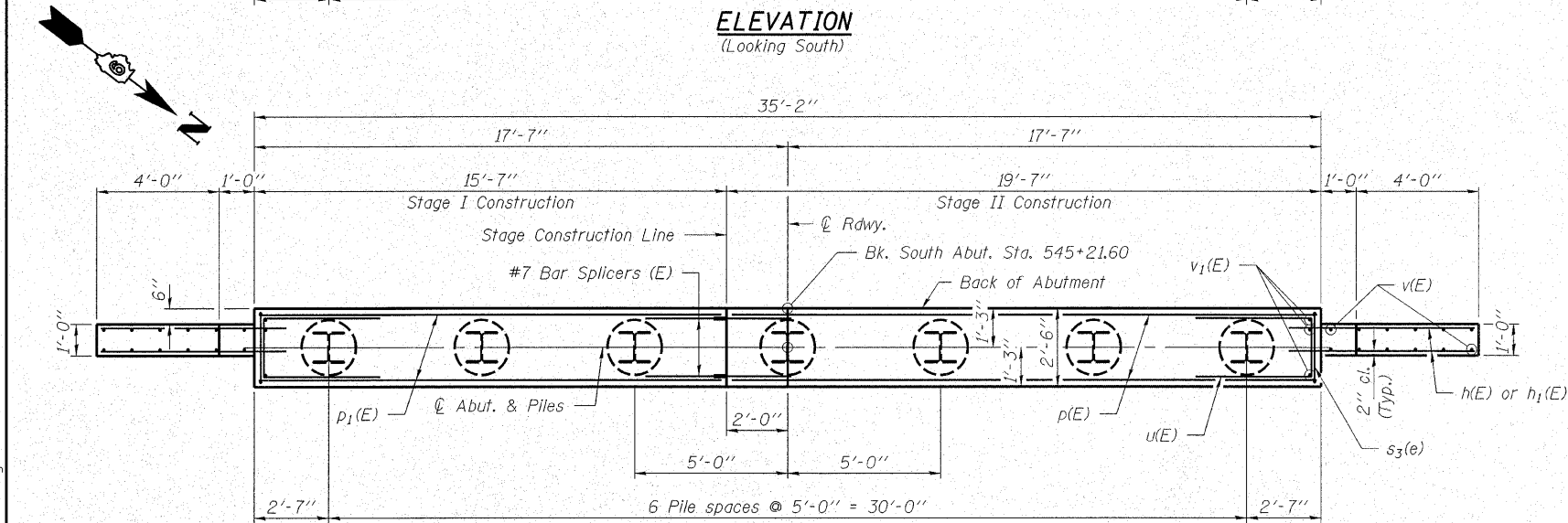
STATE OF ILLINOIS
DEPARTMENT OF TRANSPORTATION

ROUTE NO. F.A.P. 776	SECTION (116BR -3)B-1	COUNTY HAMILTON	STATION 140	SHEET NO. 77	SHEET NO. 12 21 SHEETS
FED. ROAD DIST. NO. 7		ILLINOIS		FED. AID PROJECT	

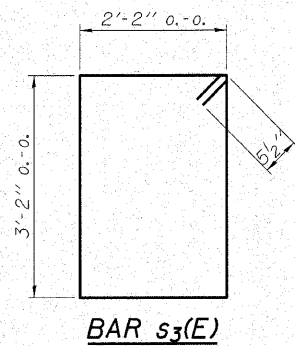
Contract #78006



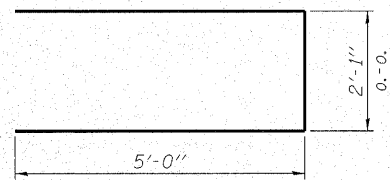
ELEVATION
(Looking South)



PLAN



BAR s3(E)



BAR u(E)

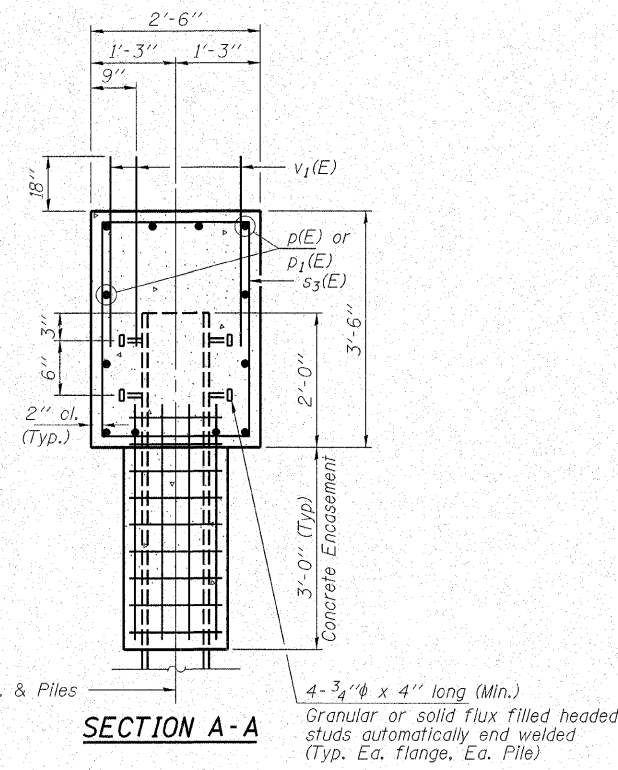
PILE DATA

Type and Size _____ Steel HP10x57
No. Req'd. _____ 7
Nominal Req'd Bearing _____ 453 Kips/Pile
Allowable Resistance Available _____ 151 Kips/Pile
Est. Lengths _____ 60 Ft/Pile

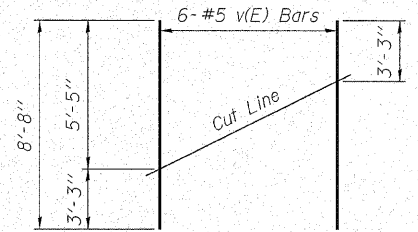
Notes: The Steel H-Piles shall be according to AASHTO M270 Grade 50.

The test piles shall be driven to 110 percent of the Nominal Required Bearing indicated in the pile data information.

* Includes one test pile to be driven in a permanent location at the South Abutment.



SECTION A-A



FIELD CUTTING DIAGRAM
Order v(E) bars full length. Cut as shown and use remainder of bars in opposite face.

BILL OF MATERIAL - S. ABUT.

BAR	NO.	SIZE	LENGTH	SHAPE
h(E)	16	#5	7'-0"	—
h1(E)	12	#5	7'-6"	—
p(E)	12	#7	15'-3"	—
p1(E)	12	#7	19'-3"	—
s3(E)	31	#5	11'-7"	□
u(E)	8	#6	12'-1"	U
v(E)	12	#5	8'-8"	—
v1(E)	108	#5	4'-0"	—
Concrete Structures			Cu. Yd.	13.2
Concrete Encasement			Cu. Yd.	2.4
Stud Shear Connectors			Each	56
Reinforcement Bars, Epoxy Coated			Pound	2,140
Bar Splicers			Each	12
Furnishing Steel Piles HP10x57			Foot	360
Test Pile Steel HP10x57			Each	1

For details of Bar Splicers, see sheet 16 of 21.
For details of Piles and Concrete Encasement, see sheet 17 of 21.

Excavation behind existing abutment walls shall be performed to balance front and back soil pressure before removing the existing superstructure. The Contractor shall sawcut the upper portion of the existing abutment at the stage removal line before Stage I removal to ensure the remaining portion will not be prematurely damaged.

<p>HAMPTON, LENZINI & RENWICK, INC. CIVIL & STRUCTURAL ENGINEERS LAND SURVEYORS</p> <p>3085 STEVENSON DRIVE, SUITE 201 SPRINGFIELD, ILLINOIS 62703 (217) 548-3400</p> <p>ELGIN • SPRINGFIELD</p>	<p>SOUTH ABUTMENT</p> <p>IL RTE. 142 OVER CONTRARY CREEK (SOUTH OVERFLOW)</p> <p>F.A.P. ROUTE 776 - SECTION (116BR-3)B-1</p> <p>HAMILTON COUNTY</p> <p>STRUCTURE NO. 033-0052 / STATION 544+53.10</p>	
	<p>PROJECT NUMBER: 12-41-0021-1</p> <p>DESIGNED: R.J.P. CHECKED: S.W.M. DRAWN: D.A.B.</p>	<p>DATE: 10/25/07</p>

PLOT DATE: 10/26/2007 FILE NAME = 0330052-78006-41021.br.dgn 0052.dgn