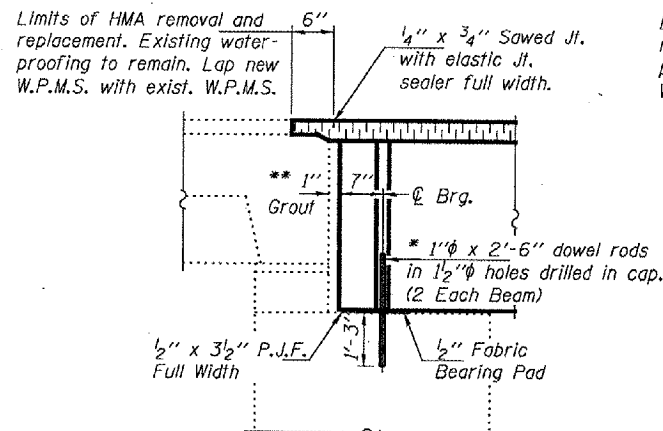


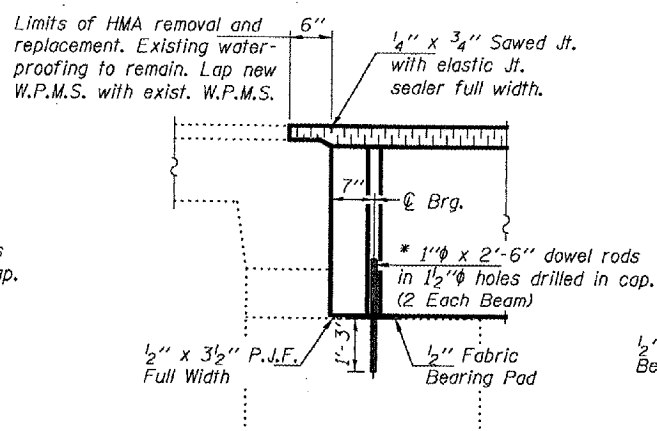
STATE OF ILLINOIS
DEPARTMENT OF TRANSPORTATION

ROUTE NO.	SECTION	COUNTY	SHEET	SHEET NO.
SBI 34		POPE	21	7
FED. ROAD DIST. NO. 7	ILLINOIS	FED. AID PROJECT		

Contract Number: 78018



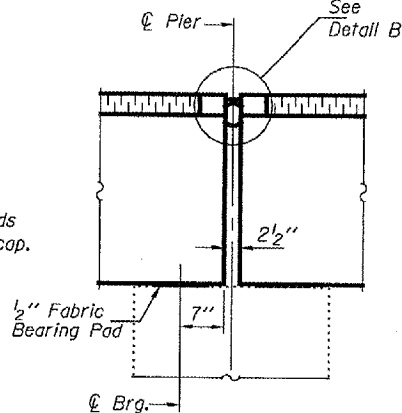
SECTION AT ABUTMENT
(At Beam 1)



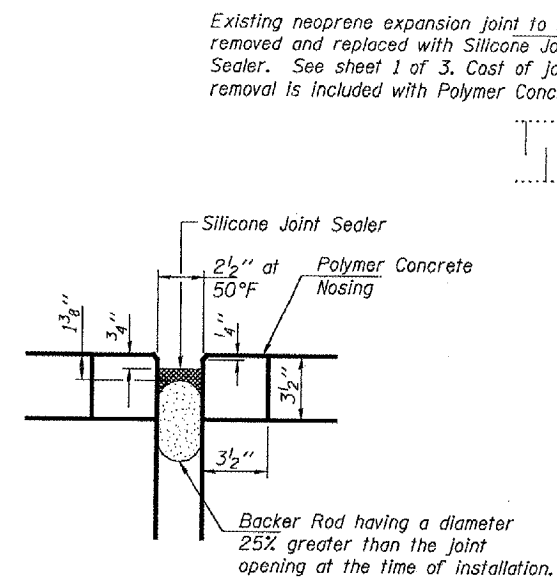
SECTION AT ABUTMENT
(At Beams 5 & 6)

** 1" joint shall be filled with non-shrink grout. This dimension may vary plus or minus to accommodate tolerance in beam lengths.

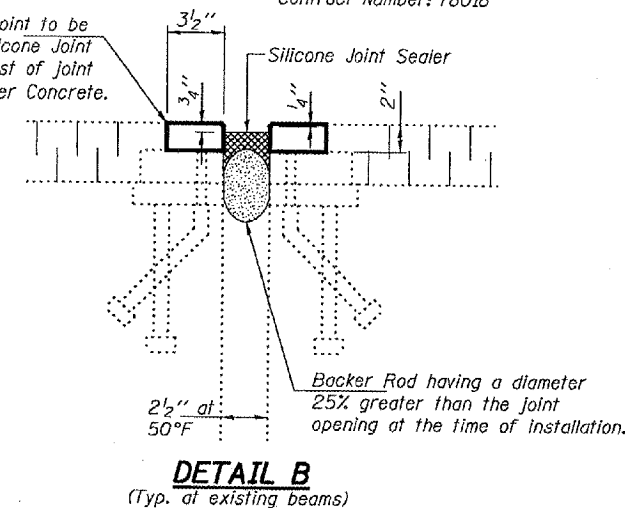
* Existing dowel rods shall be cut off and ground flush with the top of the existing concrete. Cost to be included in the cost of Removal of Existing P.P.C. Deck Beams. New dowel rods shall be grouted after beams are in place and allowed to cure a minimum of 24 hours prior to grouting shear keys.



TYPICAL SECTION AT PIER



DETAIL B
(Typ. at new beams)



TYPICAL END OF SEAL TREATMENT

NOTES

All steel shapes and plates shall conform to the requirements of AASHTO M 270 Grade 36 except posts and angles shall conform to AASHTO M 270, Grade 50.

Bolts, cap screws, and nuts shall conform to the requirements of ASTM designation A 307 except for high strength bolts, nuts and washers noted which shall conform to AASHTO M 164.

All bolts, nuts, cap screws, washers and lock washers shall be galvanized according to AASHTO M 232.

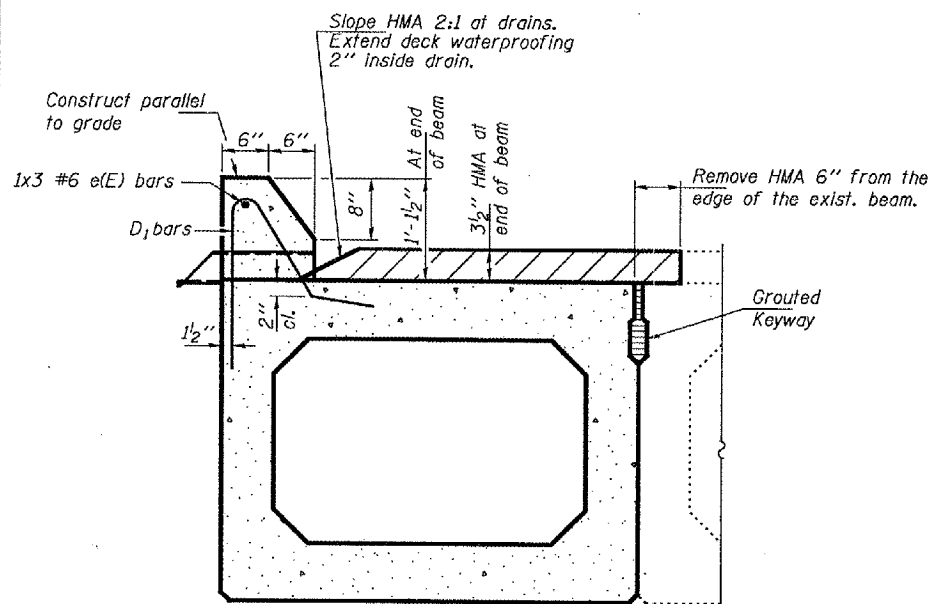
All anchor devices and angles shall be galvanized after shop fabrication according to AASHTO M 111 and ASTM A 385. Galvanized rail shall not be painted.

The lower portion of the post flange in contact with concrete shall receive two coats of asphalt paint conforming to Section 1060.07 Type II or place $\frac{1}{8}$ " fabric bearing pad between the post and concrete.

The $\frac{3}{4}$ " high strength bolts used to connect the 6 x 4 x $\frac{3}{4}$ angles to the post shall be tightened according to Article 505.04(F)(3) of the Standard Specifications. The 1" high strength bolts connecting the angles to the concrete shall be tightened to a snug fit and given an additional $\frac{1}{8}$ turn. The $\frac{5}{8}$ " cap screws in bottom of posts shall be tightened to a snug fit only.

Cost of the anchorage devices is included with the cost of Precast Prestressed Concrete Deck Beams (33" Depth).

The cost of removing and re-erecting the existing railing and post with all applicable new hardware shall be included in the cost of Removing and Re-erecting Existing Railing. The work shall be paid for at the contract unit price per foot for Removing and Re-erecting Existing Railing.



TYPICAL SECTION THRU CURB

Cost of concrete in curb included with Concrete Superstructure

Rail insert not shown for clarity.

MIN. BAR LAP
#6 = 2'-7"

DESIGNED	VHV
CHECKED	ATH
DRAWN	baliva
CHECKED	VHV ATH

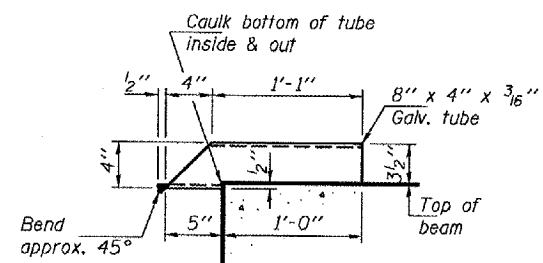
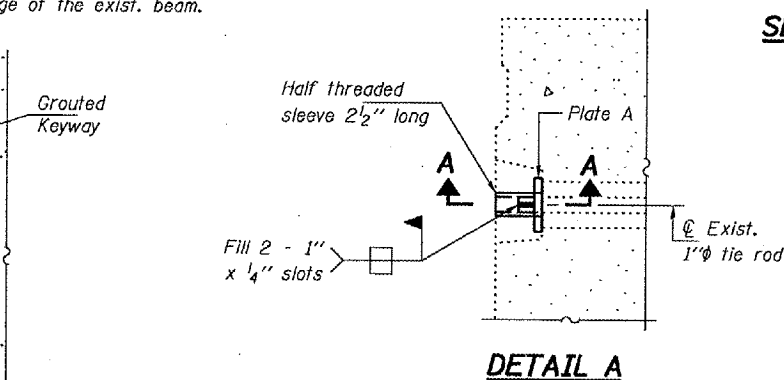
NOVEMBER 14, 2007

EXAMINED *Carl...*

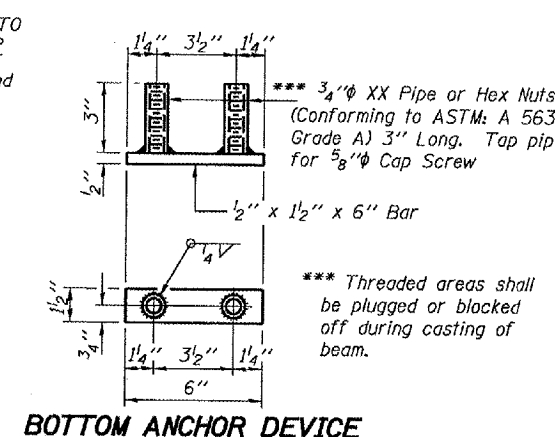
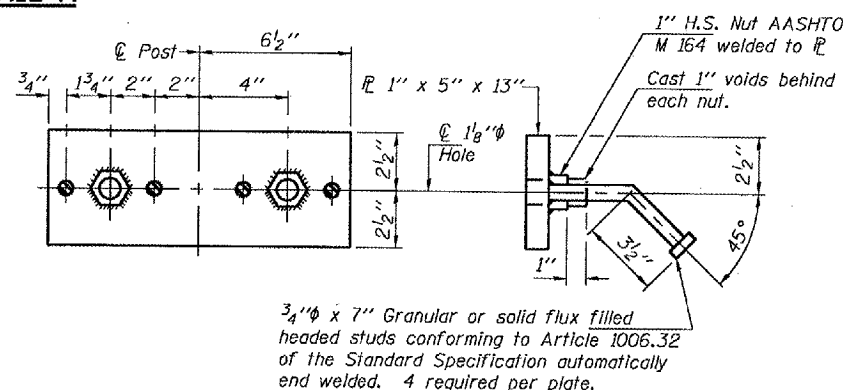
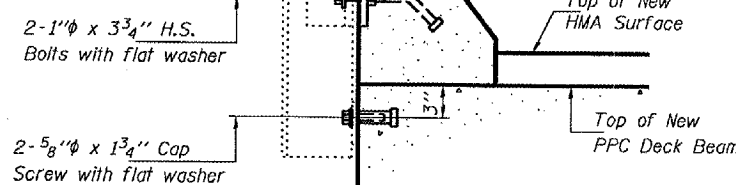
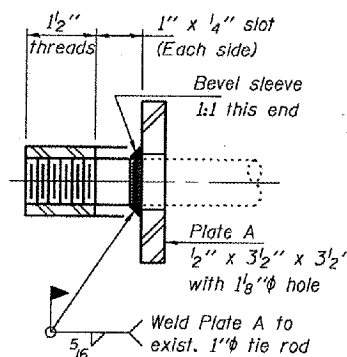
PASSED *Ralph E. Anderson*

ENGINEER OF STRUCTURAL SERVICES

ENGINEER OF BRIDGES AND STRUCTURES



DRAIN DETAIL
Cost included with Concrete Superstructure



BEAM DETAILS
SBI 34 OVER
BIG GRAND PIERRE CR
POPE COUNTY
SN 076-0002