

STATE OF ILLINOIS
DEPARTMENT OF TRANSPORTATION

ROUTE NO.	SECTION	COUNTY	TOTAL SHEETS	SHEET NO.
FA 885		POPE	21	8
FED. ROAD DIST. NO. 7		ILLINOIS	FED. AID PROJECT	

SHEET NO. 1
4 SHEETS

Contract Number: 78018

GENERAL NOTES

All structural steel shall conform to AASHTO Classification M-270 Gr. 36, unless otherwise noted.
Plan dimensions and details relative to existing plans are subject to routine variations. The Contractor shall field verify existing dimensions and details affecting new construction and make necessary approved adjustments prior to construction or ordering of materials. Such variations shall not be cause for additional compensation for a change in scope of the work, however, the Contractor will be paid for the quantity actually furnished based upon the unit price bid for the work.

The contractor is advised that the existing PPC Deck Beams are in a deteriorated condition with reduced load carrying capacity. It is the contractor's responsibility to account for the condition of the beams when developing construction procedures.

See Section 584 of the Standard Specifications for Epoxy Grouting of Threaded Rods; Minimum embedment 9".

The cost of epoxy grouting threaded rods on the pier cap, abutments and beams shall be included with Furnishing and Erecting Structural Steel.

The Contractor has the option of using used steel. See Special Provisions..

If the contractor's procedure for existing beam removal or placement of new beams involves placement of cranes or other heavy equipment on the bridge, a detailed procedure shall be submitted to the Engineer for approval. The procedure shall include calculations, prepared and sealed by an Illinois Licensed Structural Engineer, verifying that the equipment and procedure used will not overstress the new or existing beams. To distribute load to multiple beams and protect the existing surface, in all cases a double layer mat of heavy timbers shall be used at all times under crane tracks or wheels and any outriggers in the down position. If necessary, shims shall be used under the crane mat to ensure uniform contact with the underlying beams. If heavy equipment will be placed on new PPC deck beams, the following shall be done prior to placement of the timber mats: placement and tightening of transverse tie assemblies, grouting and curing the dowel rods 24 hours minimum and grouting and curing the shear keys.

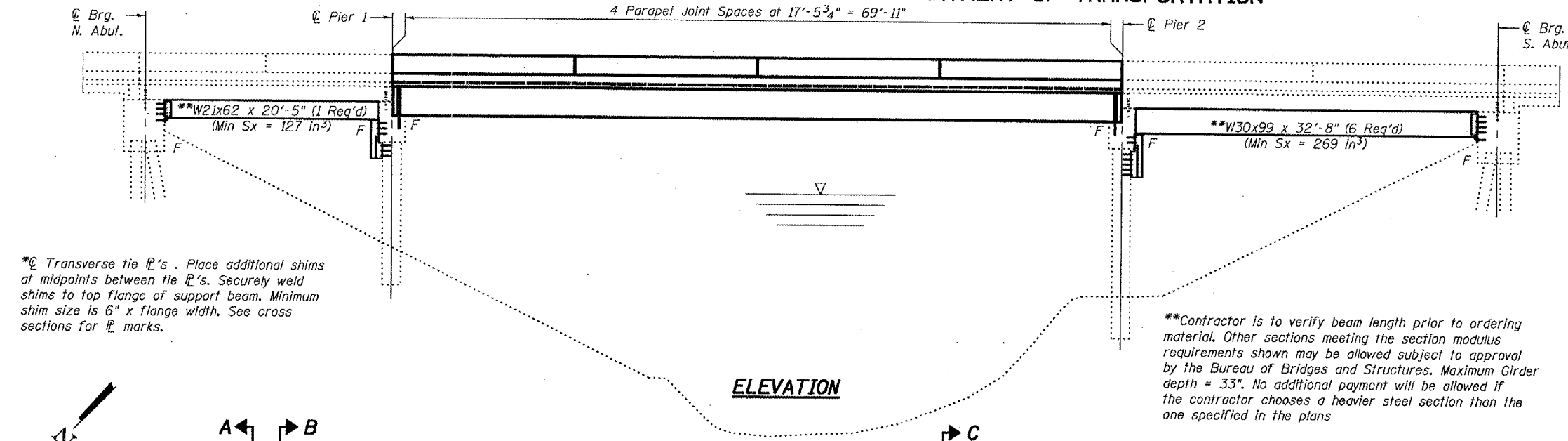
The top surface of the beams shall be finished according to the IDOT Manual for Fabrication of Precast Prestressed Concrete Products.

Reinforcement bars shall conform to the requirements of ASTM A 706 Gr 60 (II, Modified). See Special Provisions.

Reinforcement bars designated (E) shall be epoxy coated.

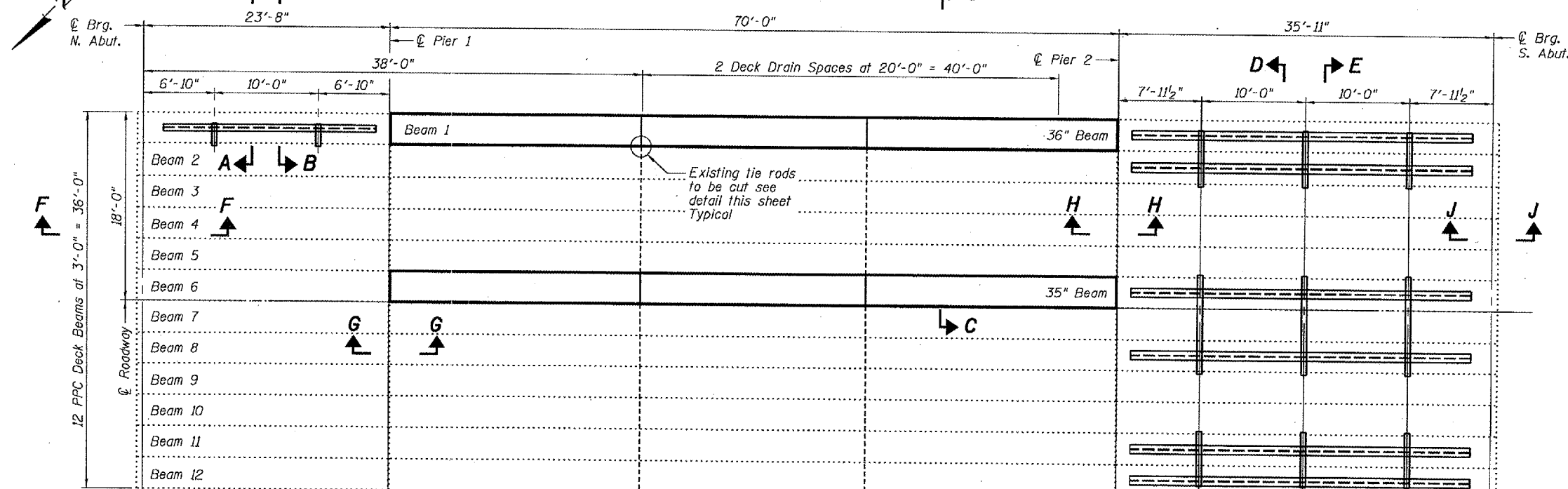
The cut strands at each beam end shall be given two coats of zinc dust spray or paint meeting the requirements of ASTM A780. The zinc dust spray or paint shall be applied before corrosion appears and allowed to dry according to manufacturer's specifications prior to another coat of zinc. This work shall be performed by the producer and included with the cost of the beam.

Temporary concrete barrier shall only be anchored into the overlay and not into the PPC Deck Beams.

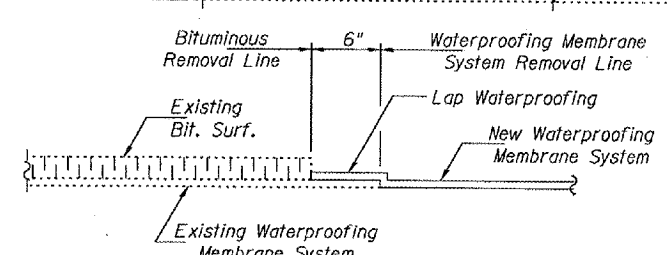


*@ Transverse tie R's. Place additional shims at midpoints between tie R's. Securely weld shims to top flange of support beam. Minimum shim size is 6" x flange width. See cross sections for R marks.

**Contractor is to verify beam length prior to ordering material. Other sections meeting the section modulus requirements shown may be allowed subject to approval by the Bureau of Bridges and Structures. Maximum Girder depth = 33". No additional payment will be allowed if the contractor chooses a heavier steel section than the one specified in the plans



Existing tie rods to be cut see detail this sheet Typical

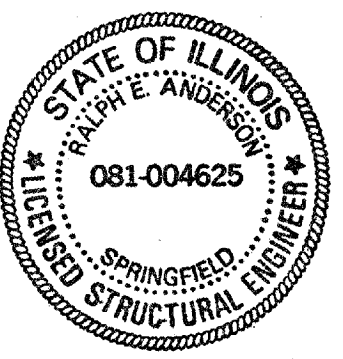


WATERPROOFING TREATMENT

DESIGNED: *Alvin T. Holloway*
CHECKED: *Vicki H. Veitz*
DRAWN: *[Signature]*
CHECKED: *UFC ATH*

EXAMINED: *[Signature]*
PASSED: *[Signature]*

November 14, 2007



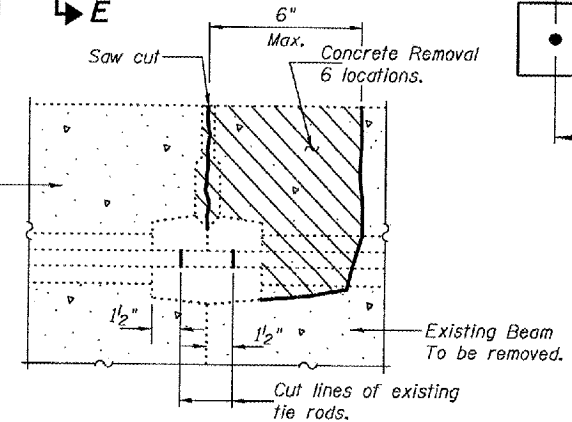
Expires: November 30, 2008

PLAN

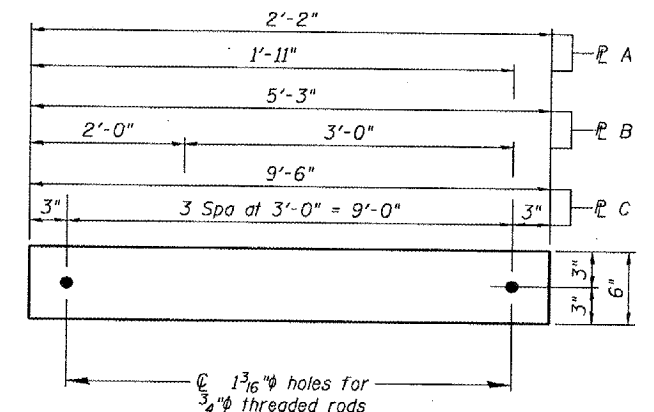
TOTAL BILL OF MATERIAL

ITEM	UNIT	QUANTITY
Furnishing and Erecting Structural Steel	Pound	26,350
Remove Existing PPC Deck Beams	Sq. Ft.	419
PPC Deck Beams (33" Depth)	Sq. Ft.	413
Concrete Removal	Cu. Yd.	8.2
Concrete Superstructure	Cu. Yd.	8.2
Hot-Mix Asphalt Surface Removal	Sq. Yd.	11.6
Hot-Mix Asphalt Surface Course Mix "C" N90	Tons	7.1
PC Mortar Fairing Course	Foot	210
Reinforcement Bars, Epoxy Coated	Pounds	1,210
Protective Coat	Sq. Yd.	30
Waterproofing Membrane System	Sq. Yd.	47

Existing Beam to Remain



BEAM REMOVAL DETAIL AT TRANSVERSE TIES



TRANSVERSE TIE R'S

R A 1/2" x 2'-2" x 6" (2 Req'd)
R B 1/2" x 5'-3" x 6" (6 Req'd)
R C 1/2" x 9'-6" x 6" (3 Req'd)

PLAN AND ELEVATION

FA 885 OVER
SIMMONS CREEK
POPE COUNTY
SN 076-0023