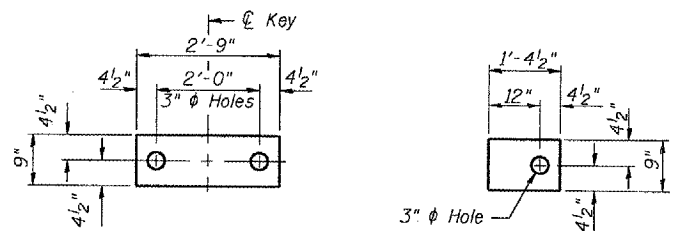


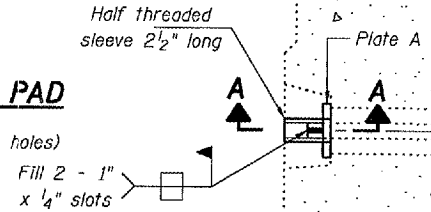
STATE OF ILLINOIS
DEPARTMENT OF TRANSPORTATION

ROUTE NO.	SECTION	COUNTY	TOTAL SHEETS	SHEET NO.
FA 885		POPE	21	14
SHEET NO. 2				
3 SHEETS				
Contract Number: 78018				



FABRIC BEARING PAD (Interior)
(Expansion Similar without holes)

FABRIC BEARING PAD (Exterior)
(Expansion Similar without holes)



DETAIL A

#5 E bars at 12" cts. Space to miss Flared Coil Loops.

3-#5 a(E) bars placed in field.

5-#5 C bars (Grade 60) @ ±7" cts.

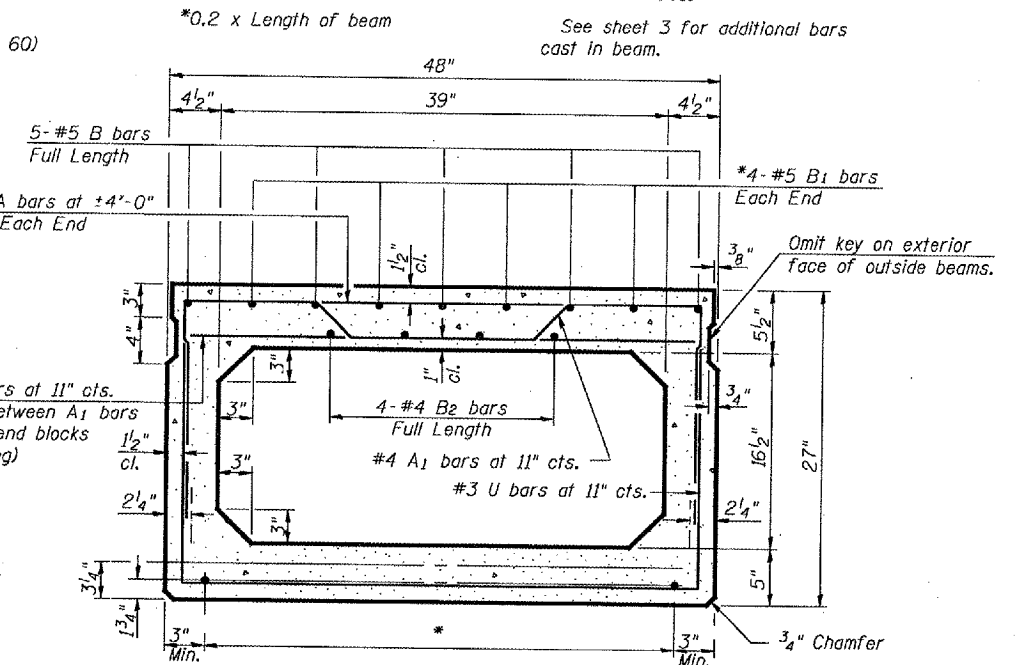
Expansion end to be filled with Class BS Concrete cast with PPC Deck Beams.

8 x 3-W2.5 x W5.5 Wire Fabric, 1 1/2" cl. (W5.5 vertical)

3-#4 A₁ top
3-#4 U₁ bottom

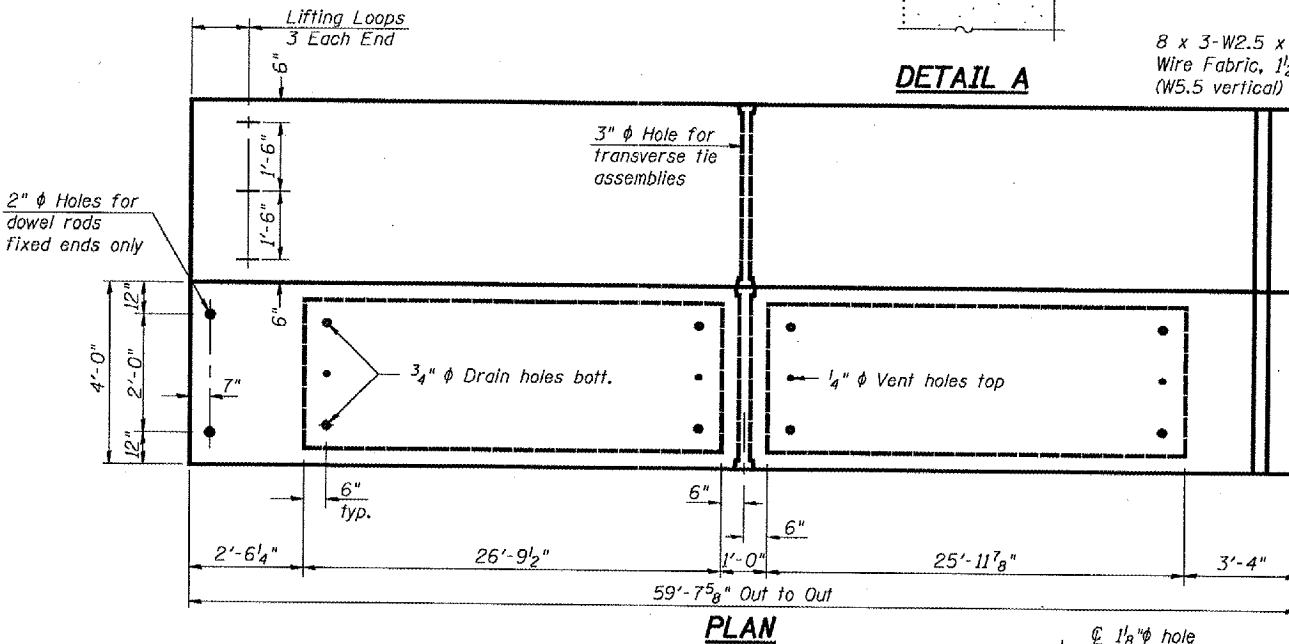
2 Pair-#4 U₂ bars

EXPANSION END OF BEAM



TYPICAL SECTION

1/2" φ Strands, Each Strand Stressed to 30,900 Lbs.
14-Strands 1 3/4" up, 2-Strands 3/4" up

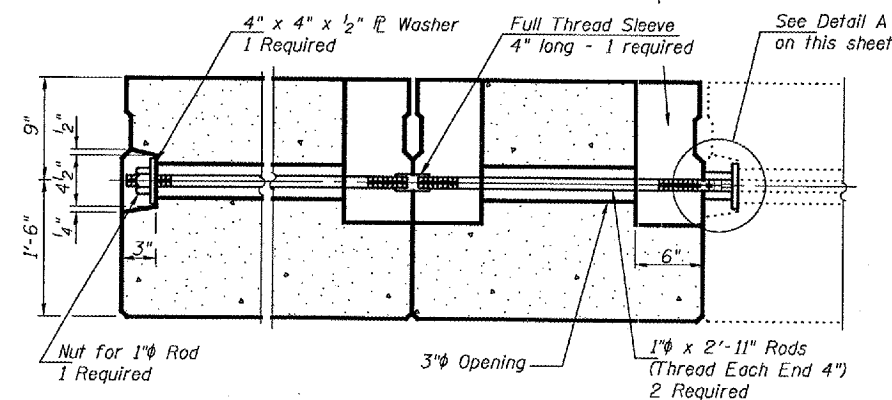


PLAN

8 x 3-W2.5 x W5.5 Wire Fabric, W5.5 vert. Full depth of beam. Each End.

END ELEVATION

6" x 6" x 1 1/2" Blockout to be filled with Class Bs Concrete after Beams have been installed. Cost shall be included in the cost of PPC Deck Beams. Omit on face of fascia beams.



TYPICAL TRANSVERSE TIE ASSEMBLY

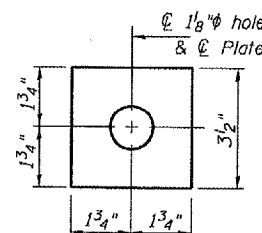
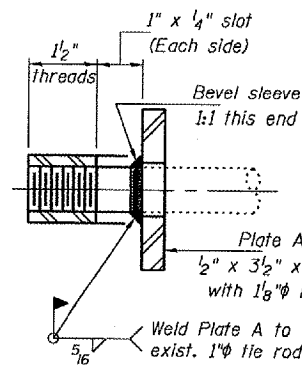


PLATE A
(1 Required)



SECTION A-A
(1 Required)

BAR E

BAR C

BAR A1

BARS U, U1 & U2

NOTES

Prestressing steel shall be uncoated high strength, low relaxation 7-wire strand, Grade 270. The nominal diameter shall be 1/2" and the nominal cross-sectional area shall be 0.153 sq. in. Lifting loops shall be 2 - 1/2" φ-270 ksi strands, as shown.

The 1" φ rods in the transverse tie assembly shall be tightened to a snug fit and the threads set. Pockets that receive transverse tie bar on outside shall be filled with grout after transverse tie assembly is in place.

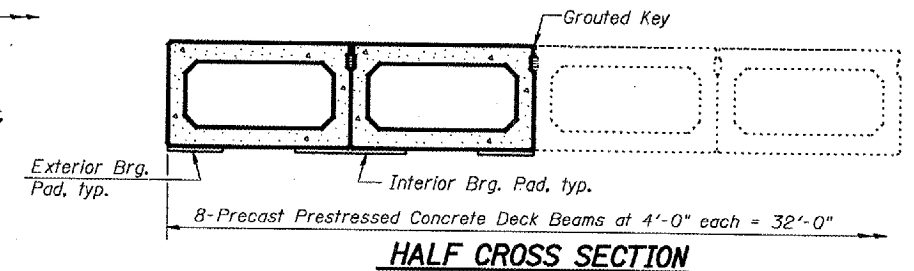
Non prestressing steel shall conform to ASTM A 706 (IL MOD), Grade 60.

The bearing seat surfaces shall be adjusted by shimming to assure firm and even bearing. Two 1/8" fabric adjusting shims of the dimensions of the Exterior Bearing Pad shall be provided for each bearing.

Keyway surfaces shall be cleaned to remove form oil or other bond breaking material prior to shipment of the beams. Cleaning shall be done by sandblasting the keyway areas between top of the beam and the bottom edge of the key.

Corrosion Inhibitor, per Article 1020.05(b)(12) of the Standard Specifications, shall be used in the concrete for precast prestressed concrete deck beams.

Required Release Strength, f'ci, shall be 4,000 p.s.i.



HALF CROSS SECTION

*** TRANSVERSE PLACEMENT GUIDELINES**

1. Place strands symmetrically about centerline of beam.
2. The minimum distance from center to center of strands in all directions shall be 2".
3. The minimum clearance from strand to dowel hole shall be 1/2".
4. The minimum clearance from strand to void shall be 1/2".

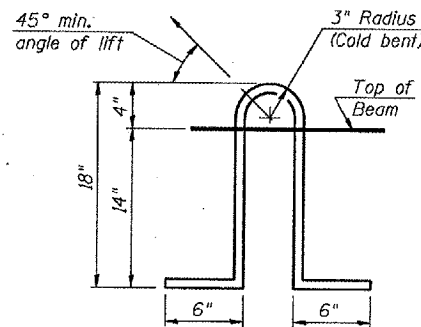
Vertical placement of strands shall not be adjusted to satisfy the above guidelines.

BILL OF MATERIAL

Bar	No.	Size	Length	Shape
a(E)	3	#5	7'-10"	
e(E)	2	#6	30'-9"	
Reinf. Bars, Epoxy Coated			Pound	120
Concrete Superstructure			Cu. Yd.	2.0
Precast Prestressed Conc. Deck Bms.			Sq. Ft.	477

Bars indicated thus 1 x 2-#5 etc. Indicates 1 line of bars with 2 lengths per line.

BEAM DETAILS
F.A.S. RT. 2936
PULASKI COUNTY
SN 077-0016



LIFTING LOOP DETAIL

DESIGNED	V.H.V.
CHECKED	A.T.H.
DRAWN	Drew Christopher
CHECKED	V.H.V. A.T.H.

EXAMINED	November 14, 2007
PASSED	Carl Proyer ENGINEER OF STRUCTURAL SERVICES
	Ralph E. Anderson ENGINEER OF BRIDGES AND STRUCTURES

PD-6-S 11-1-06