

F.A.P. RTE.	SECTION	COUNTY	TOTAL SHEETS	SHEET NO.
778	3BR-1, 4BR-1	HARDIN	69	1

STATE OF ILLINOIS  
DEPARTMENT OF TRANSPORTATION  
DIVISION OF HIGHWAYS

**PROPOSED  
HIGHWAY PLANS**

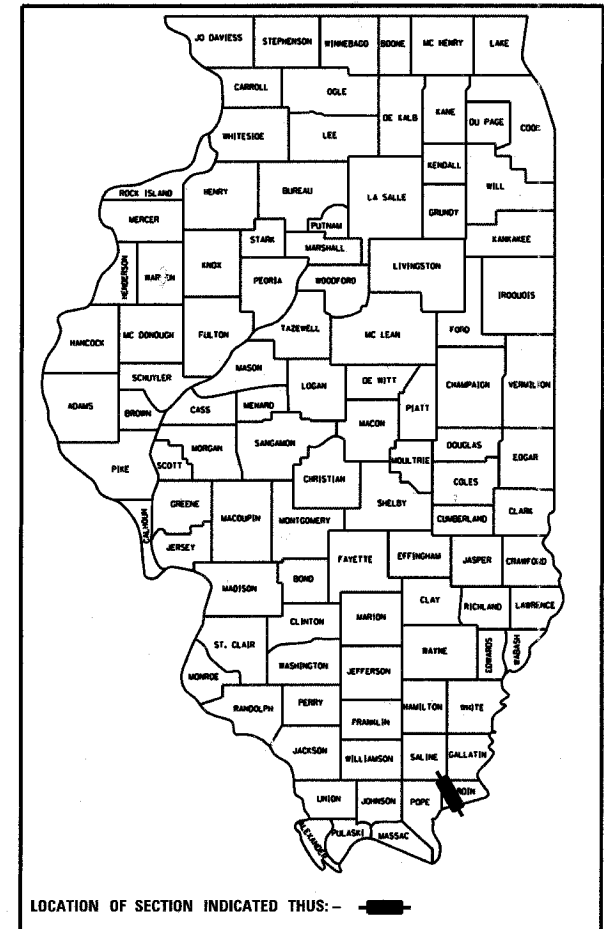
FAP ROUTE 778 (IL ROUTE 34)  
SECTION 3BR-1, 4BR-1  
PROJECT: BHF-0778(006)  
HARDIN COUNTY

C-99-003-08

PPC DECK BEAM SUPERSTRUCTURE REPLACEMENTS  
OVER PINHOOK CREEK AND HOBBS CREEK

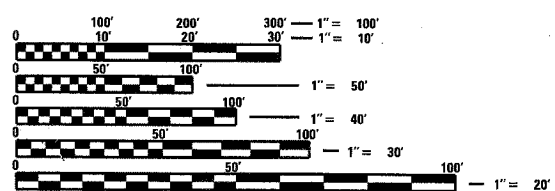
FOR INDEX OF SHEETS, SEE SHEET NO. 2  
FOR SUMMARY OF QUANTITIES, SEE SHEET NO. 3

D-99-003-08



FUNCTIONAL CLASSIFICATION: MINOR ARTERIAL (NON-URBAN)  
DESIGN SPEED: 55 MPH  
POSTED SPEED: 55 MPH  
ADT: 2000 (2007)  
PV: 85%  
TRUCKS: 15%

**DESIGN DESIGNATION  
N.A.**



FULL SIZE PLANS HAVE BEEN PREPARED USING STANDARD ENGINEERING SCALES. REDUCED SIZED PLANS WILL NOT CONFORM TO STANDARD SCALES. IN MAKING MEASUREMENTS ON REDUCED PLANS, THE ABOVE SCALES MAY BE USED.

J.U.L.I.E.  
JOINT UTILITY LOCATION INFORMATION FOR EXCAVATION  
1-800-892-0123

DISTRICT 9 NO. (618) 549-2171  
PROJECT ENGINEER: DAVID PICHE

TOWNSHIPS: WEST MONROE AND STONE CHURCH

CONTRACT NO. 78023

SECTION 3BR-1 BEGINS  
STATION 804+55

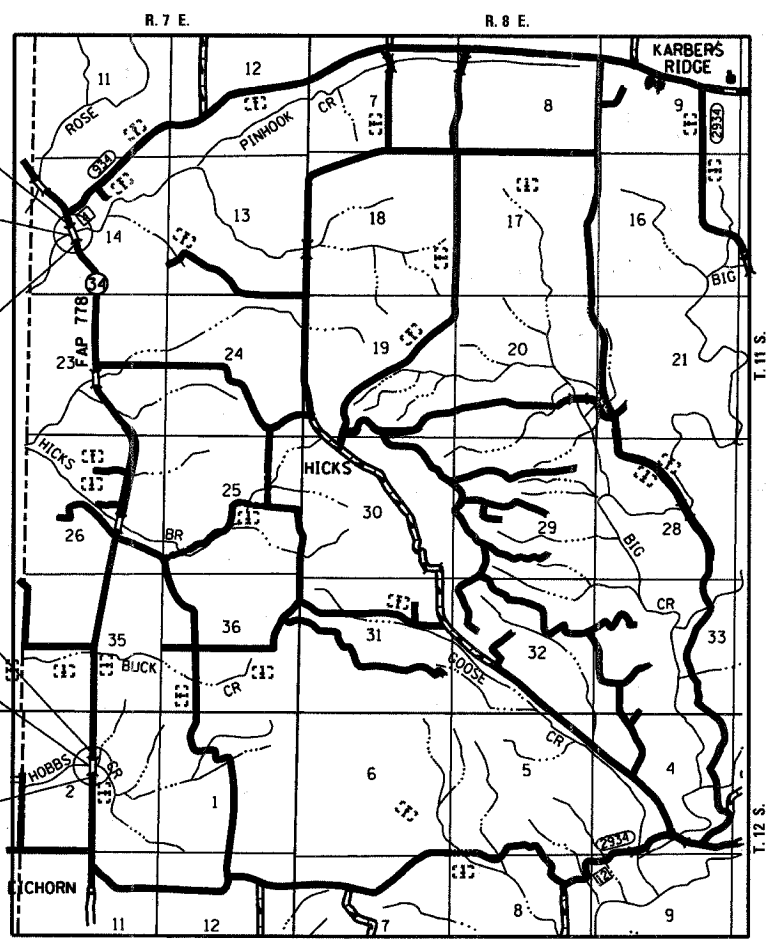
SECTION 3BR-1  
S.N. 035-0005  
STATION 806+15  
REMOVAL AND REPLACEMENT OF  
EXISTING SUPERSTRUCTURE  
OF A TWO SPAN BRIDGE  
76'-10" BK. TO BK. ABUTMENT CAPS

SECTION 3BR-1 ENDS  
STATION 807+80

SECTION 4BR-1 BEGINS  
STATION 1020+40

SECTION 4BR-1  
S.N. 035-0008  
STATION 1021+80  
REMOVAL AND REPLACEMENT OF  
EXISTING SUPERSTRUCTURE  
OF A SINGLE SPAN BRIDGE  
38'-10" BK. TO BK. ABUTMENT CAPS

SECTION 4BR-1 ENDS  
STATION 1023+20



LOCATION MAP

TOTAL LENGTH OF SECTION & PROJECT = 605.00 FEET = 0.115 MILES  
NET LENGTH OF SECTION & PROJECT = 605.00 FEET = 0.115 MILES



DAVID W. PETERMEIER  
EDWARDSVILLE, ILLINOIS  
ENGINEER NO. 062-052553  
EXPIRES: NOV. 30, 2007



STATE OF ILLINOIS  
DEPARTMENT OF TRANSPORTATION  
DIVISION OF HIGHWAYS

SUBMITTED: Oct 11, 20 07  
Maurice Krami  
DEPUTY DIRECTOR OF HIGHWAYS, REGION ENGINEER

December 7, 20 07  
Eric E. Krami  
Interim ENGINEER OF DESIGN AND ENVIRONMENT

December 7, 20 07  
Christie M. Reed  
DIRECTOR OF HIGHWAYS, CHIEF ENGINEER

**PRINTED BY THE AUTHORITY  
OF THE STATE OF ILLINOIS**

OCTOBER 2007