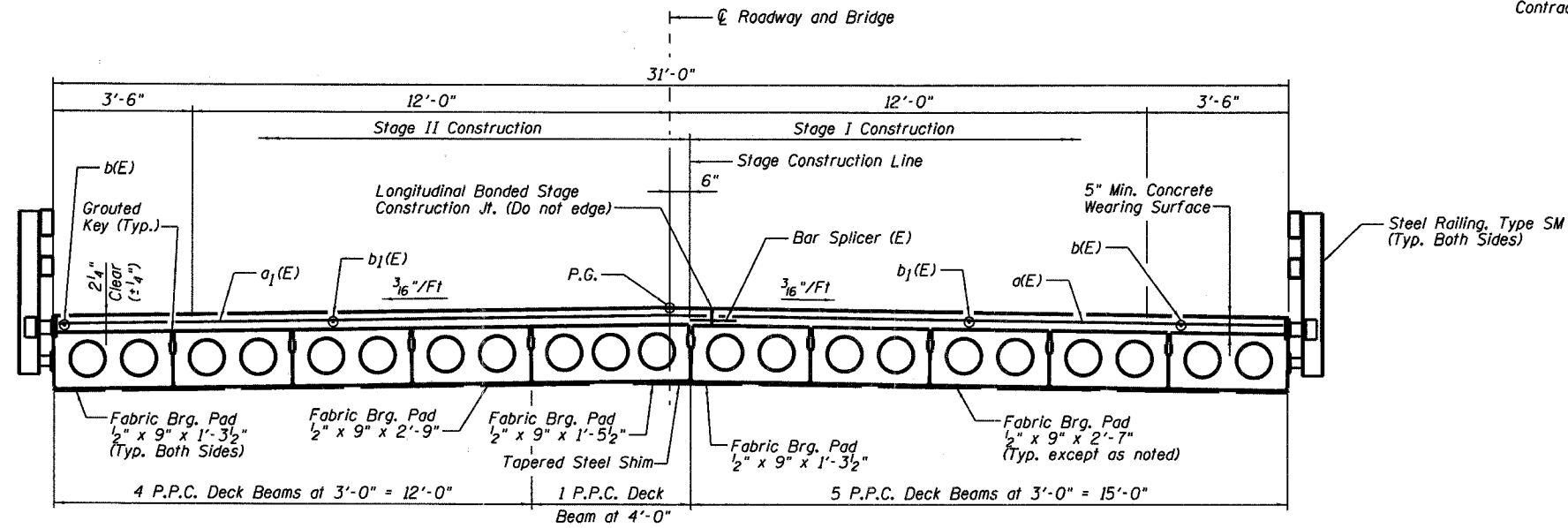


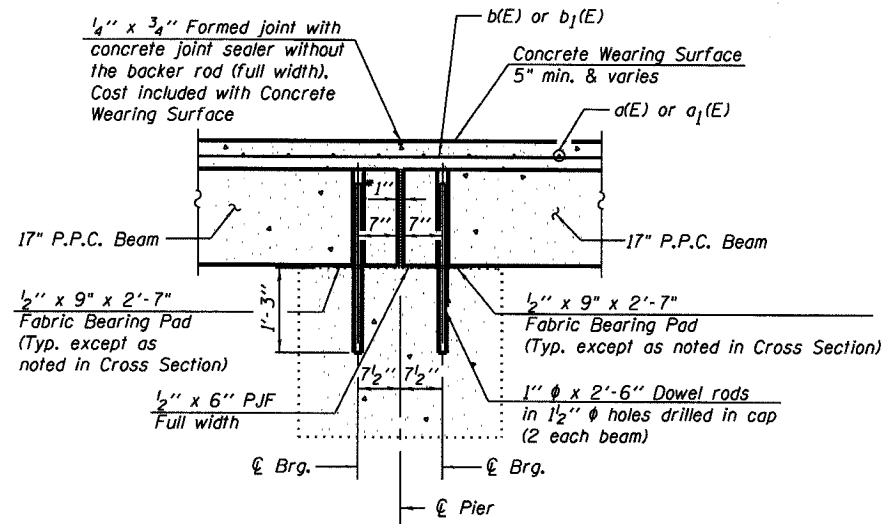
STATE OF ILLINOIS
DEPARTMENT OF TRANSPORTATION

ROUTE NO.	SECTION	COUNTY	DATE SHEETS	SHEET NO.	SHEET NO.
F.A.P. 778	3BR-1	HARDIN	69	20	14 SHEETS
FED. ROAD DIST. NO. 7	ILLINOIS	FED. AID PROJECT-			

Contract #78023

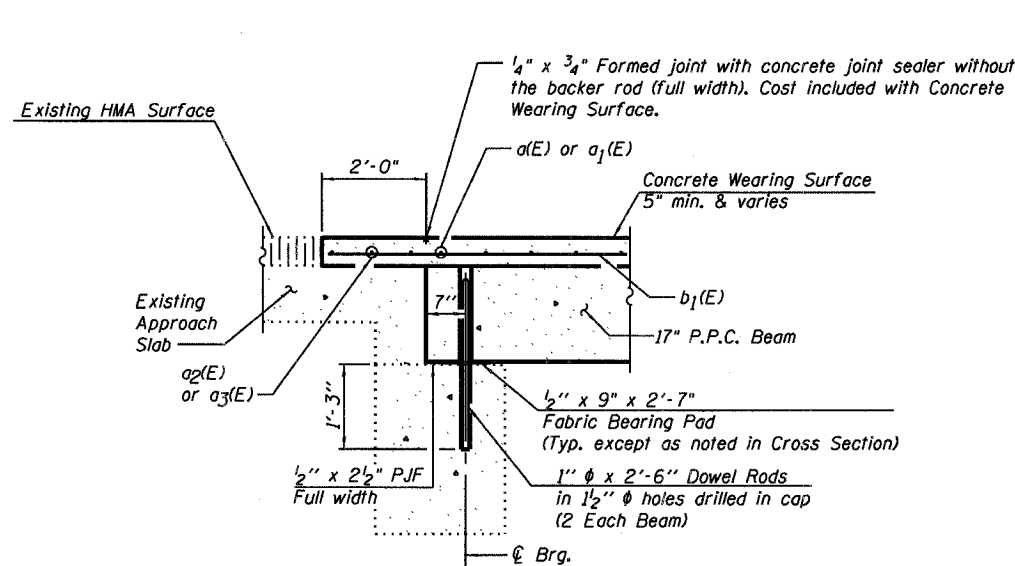


CROSS SECTION
(Looking Upstation)



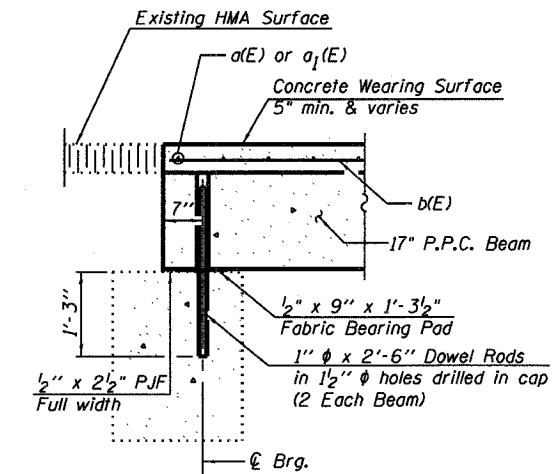
SECTION THRU FIXED PIER

* 1" Jt. shall be filled with non-shrink grout. 1" dimension may vary to accommodate tolerance in beam lengths.



SECTION THRU FIXED ABUTMENT AT APPROACH SLAB

Notes:
After beams have been erected, holes shall be drilled into substructure and anchor dowels placed. Dowel holes shall be filled with non-shrink grout to top of beam and allowed to cure min. 24 hrs. prior to grouting the shear keys.
Dowel rods drilled in cap are included in the cost of Precast Prestressed Conc. Deck Beams (17").



SECTION THRU FIXED ABUTMENT AT SHOULDERS

**SUPERSTRUCTURE DETAILS
SECTIONS AND JOINT DETAILS
ILL. ROUTE 34 OVER PINHOOK CREEK
F.A.P. ROUTE 778 SECTION 3BR-1
HARDIN COUNTY
STATION 806+15.00
STRUCTURE NO. 035-0005**



DESIGNED	RLM
CHECKED	MEL
DRAWN	AEC
CHECKED	RLM

10/04/07