

F.A.P. RTE.	SECTION	COUNTY	TOTAL SHEETS	SHEET NO.
778	48R-1	HARDIN	69	42

STA. 1018+50 TO STA. 1025+20
 FED. ROAD DIST. NO. 7 ILLINOIS FED. AID PROJECT

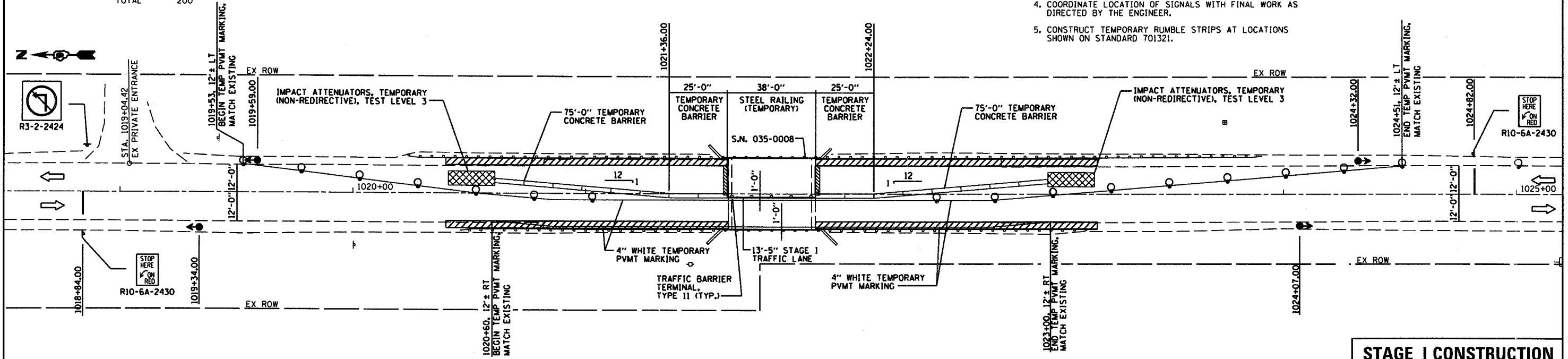


SCHEDULE OF QUANTITIES

STATION TO	STATION	FEET	DESCRIPTION	QUANTITY
1021+61.00	1021+99.00	38	STEEL RAILING (TEMPORARY)	1 EACH
	TOTAL	38	TEMPORARY RUMBLE STRIPS	6 EACH
1020+61.00	1021+61.00	100	IMPACT ATTENUATORS, TEMPORARY (NON-REDIRECTIVE), TEST LEVEL 3	2 EACH
1021+99.00	1022+99.00	100	TEMPORARY TRAFFIC BARRIER TERMINAL, TYPE II	2 EACH
	TOTAL	200		

NOTES

- TRAFFIC CONTROL SHALL BE ERECTED AS SHOWN AND ACCORDING TO "TRAFFIC CONTROL AND PROTECTION, STANDARD 701321."
- SEE SPECIAL PROVISIONS FOR ADDITIONAL TRAFFIC CONTROL REQUIREMENTS.
- STEEL RAILING (TEMPORARY) AND TEMPORARY CONCRETE BARRIER SHALL BE CONNECTED ACCORDING TO "TRAFFIC BARRIER TERMINAL TYPE II, STANDARD 631051".
- COORDINATE LOCATION OF SIGNALS WITH FINAL WORK AS DIRECTED BY THE ENGINEER.
- CONSTRUCT TEMPORARY RUMBLE STRIPS AT LOCATIONS SHOWN ON STANDARD 701321.



STAGE I CONSTRUCTION

SCHEDULE OF QUANTITIES

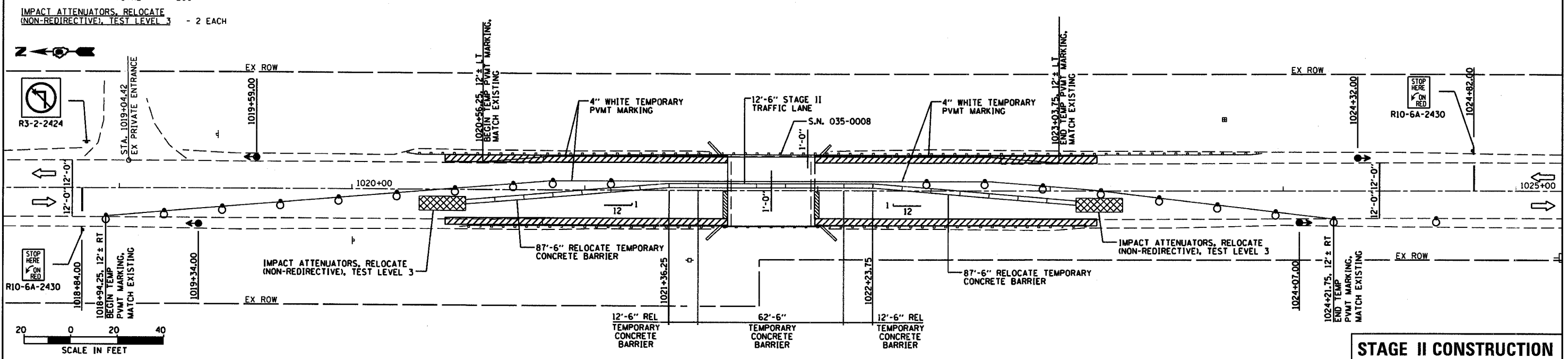
STATION TO	STATION	FEET	DESCRIPTION	QUANTITY
1021+48.75	1022+11.25	62.50	TEMPORARY CONCRETE BARRIER	1 EACH
	TOTAL	62.50	RELOCATE TEMPORARY CONCRETE BARRIER	100
1020+48.75	1021+48.75	100		100
1022+11.25	1023+11.25	100		100
	TOTAL	200		

NOTES

- TRAFFIC CONTROL SHALL BE ERECTED AS SHOWN AND ACCORDING TO "TRAFFIC CONTROL AND PROTECTION, STANDARD 701321."
- SEE SPECIAL PROVISIONS FOR ADDITIONAL TRAFFIC CONTROL REQUIREMENTS.
- MAINTAIN TEMPORARY RUMBLE STRIPS AT LOCATIONS SHOWN ON STANDARD 701321.

LEGEND

- TRAFFIC SIGNAL
- DRUM WITH STEADY BURNING LIGHT
- ▨ HMA SURFACE REMOVAL, 5"
- ▩ BASE COURSE WIDENING, 10"



STAGE II CONSTRUCTION

DATE: 10/18/18
 FILE NAME: 778-48R-1-42.dwg
 PLOT SCALE: 1/8"=1'-0"
 USER: MJB