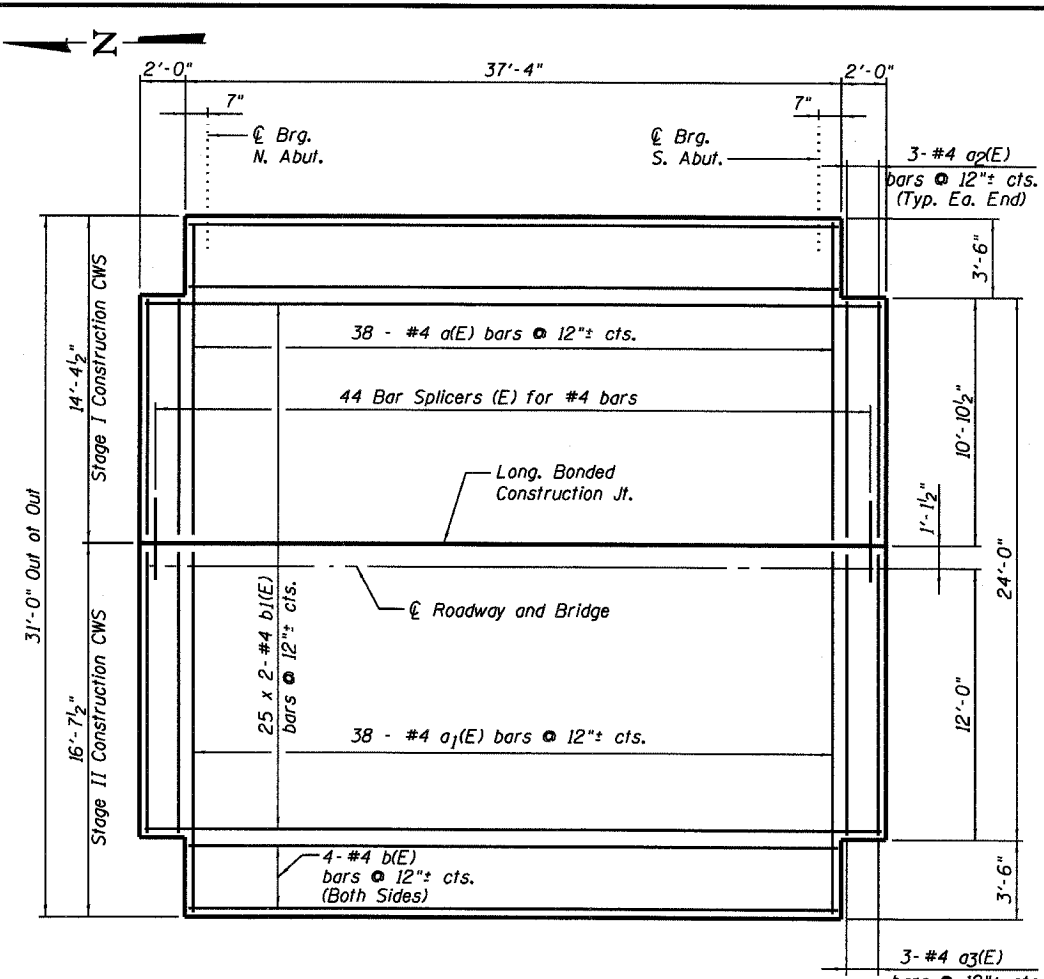


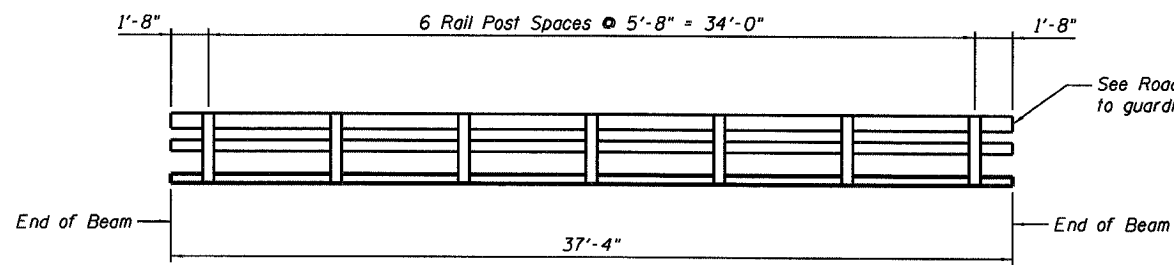
STATE OF ILLINOIS
DEPARTMENT OF TRANSPORTATION

ROUTE NO.	SECTION	COUNTY	SHEETS	POST	SHEET NO. 8
F.A.P. 778	4BR-1	HARDIN	69	53	12 SHEETS
FED. ROAD DIST. NO. 7	ILLINOIS	FED. AID PROJECT			

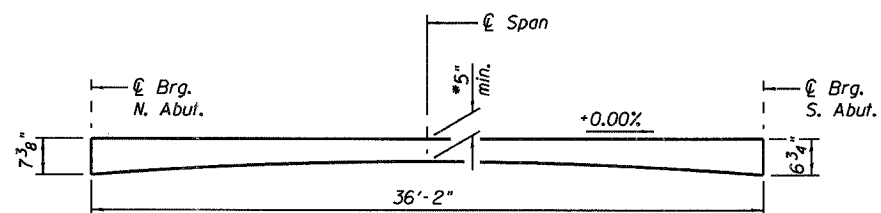
Contract #78023



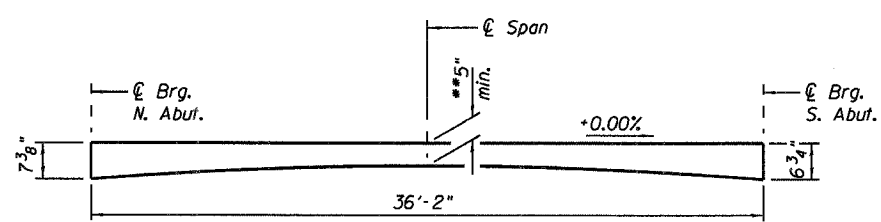
PARTIAL PLAN - CONCRETE WEARING SURFACE
Min. Bar Lap: #4 Bars - 1'-4"



RAIL POST SPACING DETAILS

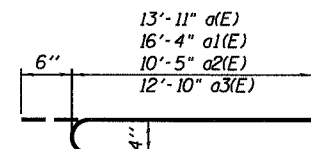


CONCRETE WEARING SURFACE PROFILE - 36" BEAMS
* 6" Theoretical

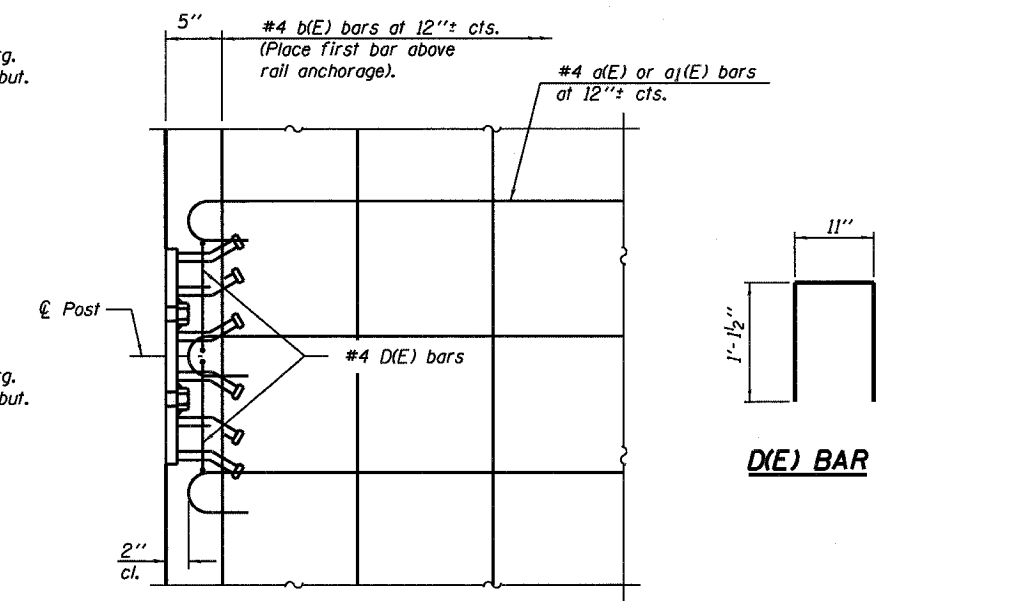


CONCRETE WEARING SURFACE PROFILE - 48" BEAM
** 6 1/4" Theoretical

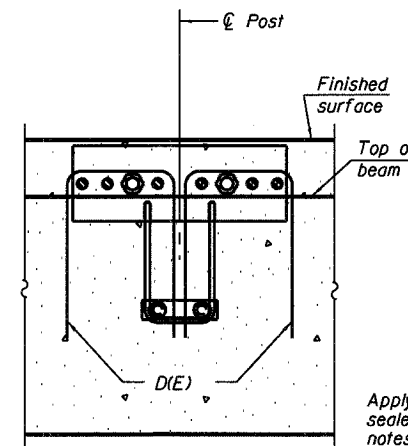
Note:
Thickness on 48" beam will vary from those shown above at profile grade to 3/8" less at stage construction line.



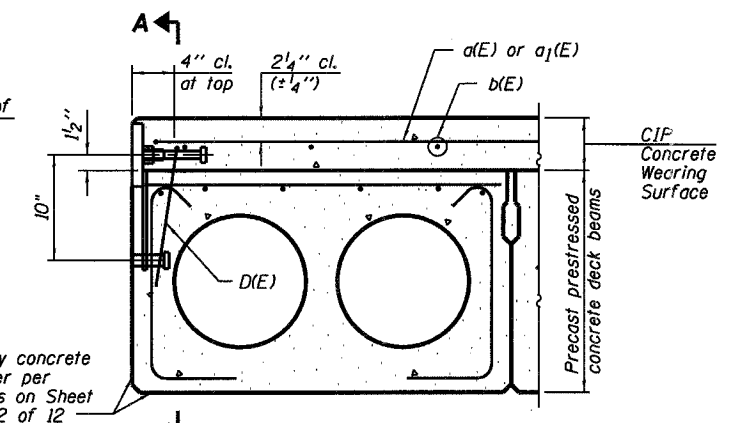
a(E), a1(E), a2(E), and a3(E) BARS



PLAN



SECTION A-A



FASCIA BEAM CROSS SECTION

**CONCRETE WEARING SURFACE AND FASCIA BEAM
MODIFICATIONS FOR RAIL ANCHORAGE**

Notes:
See Sheet No. 10 of 12 for rail anchorage details.
The rail anchorage shall be cast with the beam and the wearing surface shall be cast in the field.
Formwork necessary for the wearing surface may be secured utilizing the bottom rail anchorage inserts and/or additional inserts cast into the beam. Drilling into the beam or slab will not be permitted.
Concrete wearing surface to be poured after grouting the shear keys.

**SUPERSTRUCTURE DETAILS
CONCRETE WEARING SURFACE
ILL. ROUTE 34 OVER HOBBS CREEK
F.A.P. ROUTE 778 SECTION 4BR-1
HARDIN COUNTY
STATION 1021+80.00
STRUCTURE NO. 035-0008**

BILL OF MATERIAL

Bar	No.	Size	Length	Shape
a(E)	38	#4	14'-5"	[U]
a1(E)	38	#4	16'-10"	[U]
a2(E)	6	#4	10'-11"	[U]
a3(E)	6	#4	13'-4"	[U]
b(E)	8	#4	37'-1"	[—]
b1(E)	50	#4	21'-3"	[—]
Reinforcement Bars, Epoxy Coated		Pound	1,800	
Concrete Wearing Surface, 5"		Sq. Yd.	140	
Bridge Deck Grooving		Sq. Yd.	140	
Bar Splicers		Each	44	
Protective Coat		Sq. Yd.	140	

Reinforcement bars designated (E) shall be epoxy coated.
Bars indicated thus 1 x 2-#4 etc. indicates 1 line of bars with 2 lengths per line.



DESIGNED	RLM
CHECKED	MEL
DRAWN	AEC
CHECKED	RLM

10/04/07